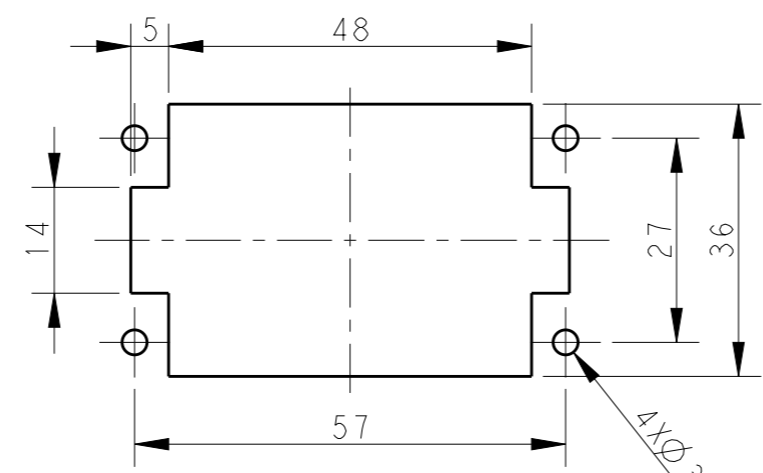
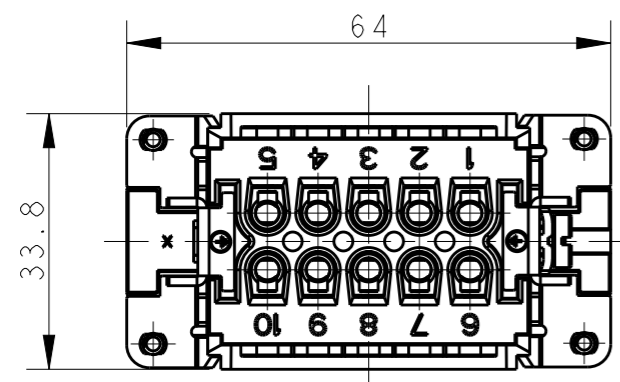


THIS DRAWING IS UNPUBLISHED. RELEASED FOR PUBLICATION 20  
 © COPYRIGHT 20 BY - ALL RIGHTS RESERVED.

REVISIONS					
P	LTR	DESCRIPTION	DATE	DWN	APVD
A		INITIAL RELEASE	14APR2015	GY	CW
B		ECR-15-013759	27SEP2015	DW	CW
B1		ECR-16-011988	25AUG2016	YC	CW
B2		ECR-18-017123	15DEC2018	KW	CW

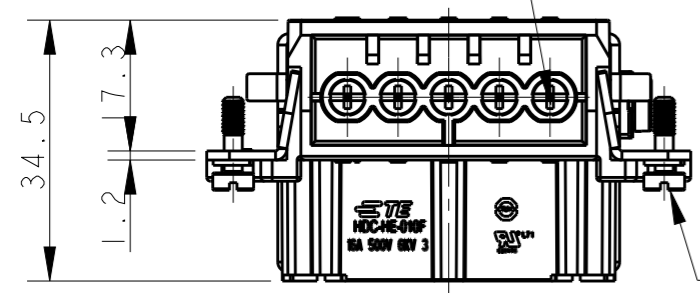


PANEL CUT FOR INSERTS FOR USE WITHOUT HOODS/ HOUSINGS  
 不使用防护外壳时芯件的安装开孔图

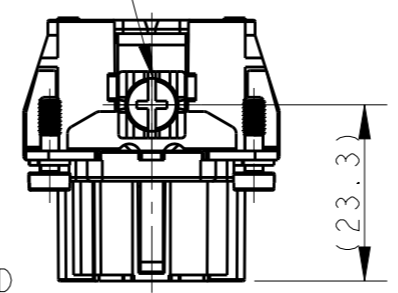
NOTES:  
 1. TECHNICAL CHARACTERISTICS:  
 INSULATION MATERIAL: PC  
 RATED VOLTAGE: 500V  
 RATED CURRENT: 16A  
 INSULATION RESISTANCE:  $\geq 400M\Omega$   
 RATED IMPULSE VOLTAGE: 6KV  
 POLLUTION DEGREE: 3  
 FLAMMABILITY: UL94V-0  
 MATING CYCLES: 500 CYCLES  
 WIRE RANGE:  $0.5mm^2 \sim 2.5mm^2$  (AWG20-AWG14)  
 CONTACT TYPE: SCREW CLAMP (M3)

10X M3 SCREW, RECOMMENDED  
 TIGHTENING TORQUE 0.5Nm  
 10X M3螺丝, 推荐锁紧力矩0.5Nm

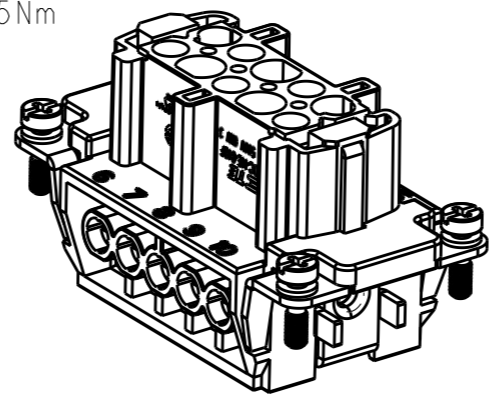
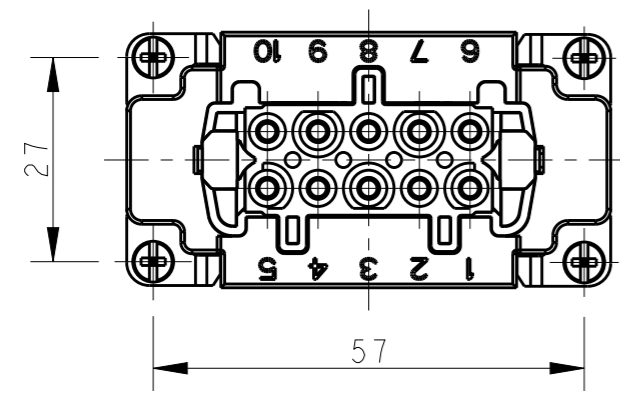
M4 SCREW, RECOMMENDED  
 TIGHTENING TORQUE 1.2Nm  
 M4螺丝, 推荐锁紧力矩1.2Nm



4X M3 SCREW, RECOMMENDED  
 TIGHTENING TORQUE 0.5Nm  
 4X M3螺丝, 推荐锁紧力矩0.5Nm



注释:  
 1. 技术参数:  
 绝缘材料: PC  
 额定电压: 500V  
 额定电流: 16A  
 绝缘电阻:  $\geq 400M\Omega$   
 脉冲电压: 6KV  
 污染等级: 3  
 阻燃等级: UL94V-0  
 插拔次数: 500 次  
 接线范围:  $0.5mm^2 \sim 2.5mm^2$  (AWG20-AWG14)  
 接线类型: 螺丝压接 (M3)



TYPE 1, T2040102201-000, WITH LOGO  
 类型 1, T2040102201-000, 带LOGO

THIS DRAWING IS A CONTROLLED DOCUMENT.		DWN GINO YAO 14APR2015	TE Connectivity	
DIMENSIONS: mm		CHK CHRIS WANG 14APR2015		
TOLERANCES UNLESS OTHERWISE SPECIFIED:		APVD XIANG XU 14APR2015	NAME HE-010-F	
0 PLC ±-		PRODUCT SPEC 108-137044	RESTRICTED TO	
1 PLC ±-		APPLICATION SPEC 114-137044	SIZE A3	CAGE CODE 00779
2 PLC ±-		WEIGHT -	DRAWING NO. C-T2040102201000	
3 PLC ±-		CUSTOMER DRAWING	SCALE 1:1	SHEET 1 OF 2
4 PLC ±-				REV B2
ANGLES ±-				
FINISH -				
MATERIAL -				

THIS DRAWING IS UNPUBLISHED.

RELEASED FOR PUBLICATION

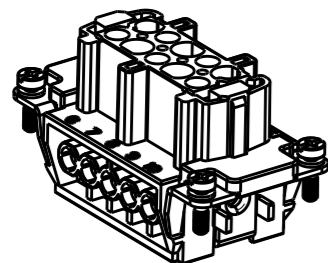
20

© COPYRIGHT 20 BY -

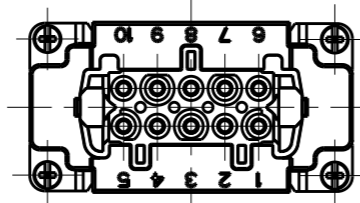
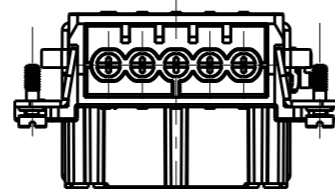
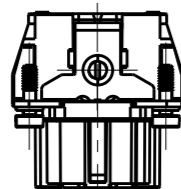
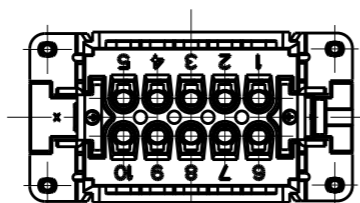
ALL RIGHTS RESERVED.

REVISIONS

P	LTR	DESCRIPTION	DATE	DWN	APVD
-		SEE SHEET 1	-	-	-

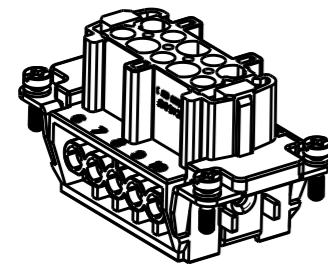


TYPE 2, T2040102201-001, WITHOUT LASER SIDE MARK  
 类型 2, T2040102201-001, 不带侧面激光标识

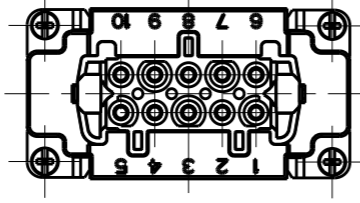
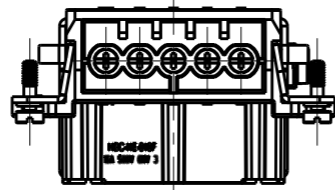
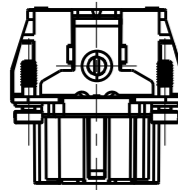
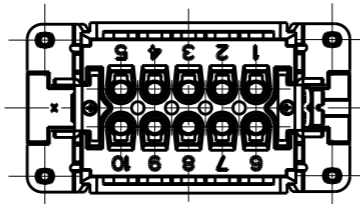


NOTE:  
 ALL SPEC REFER TO TYPE 1

注释:  
 所有产品规范参照 TYPE 1



TYPE 3, T2049102201-000, WITHOUT LASER LOGO  
 类型 3, T2049102201-000, 不带激光LOGO标识



T2040102201-000	HE-010-F	HE-010 FEMALE INSERT HE-010 母插	TYPE 1
T2040102201-001	HE-010-F	HE-010 FEMALE INSERT, WITHOUT LASER SIDE MARK HE-010 母插, 无激光侧面标识	TYPE 2
T2049102201-000	HE-010-F	HE-010 FEMALE INSERT, WITHOUT LOGO HE-010 母插, 无LOGO	TYPE 3
PART NUMBER 料号	PART DESCRIPTION 描述		TYPE 类型

THIS DRAWING IS A CONTROLLED DOCUMENT.		DWN GINO YAO 14APR2015					
DIMENSIONS: mm		CHK CHRIS WANG 14APR2015			NAME HE-010-F		
TOLERANCES UNLESS OTHERWISE SPECIFIED:		APVD XIANG XU 14APR2015			PRODUCT SPEC 108-137044		
0 PLC ±- 1 PLC ±- 2 PLC ±- 3 PLC ±- 4 PLC ±- ANGLES ±-		APPLICATION SPEC 114-137044	SIZE A3	CAGE CODE 00779	DRAWING NO T2040102201000	RESTRICTED TO -	
MATERIAL -		FINISH -	WEIGHT -		SCALE 1:1	SHEET 2 OF 2	REV B2
		CUSTOMER DRAWING					