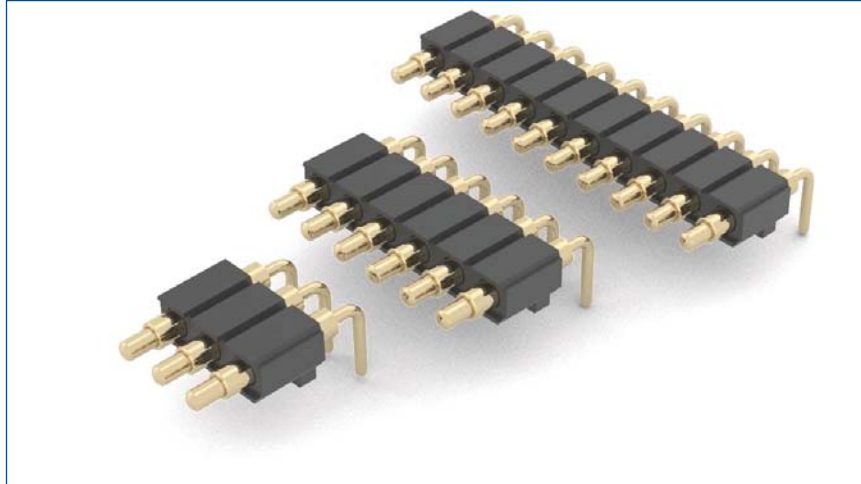


MAXIMUM SOLUTIONS

Mill-Max's Single-Row, Right-Angle Spring-Loaded Connectors



Mill-Max's [829](#) series single-row, right-angle strips are the perfect solution for applications calling for a spring-loaded connection that lies parallel to the pc board. Spring-loaded connectors (SLC) are commonly used to provide a high quality battery interface connection and in applications such as board-to-board interconnects and blind mate assemblies. This low profile, right angle connector is ideal for the small packaging requirements of hand-held devices, especially where vertical space is limited.

Offering all the superior characteristics of our other spring-loaded products, the 829 series has an increased mid-stroke distance of .045" (1.14 mm) – more than double most standard series product.

With tails bent at right-angles and locating pegs on the insulator, the 829 series is installed as a through-hole component providing a secure connection to the pc board.

These SLC's are suitable for hand, intrusive reflow or wave soldering.

Rated at 2A continuous, 3A peak per pin, the 829 series is offered in up to 10 positions in a strip.

For more information, please visit: www.mill-max.com/PR615.

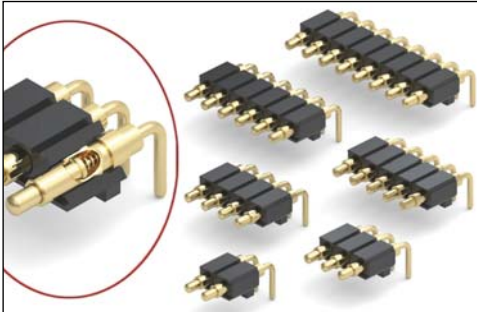
(7/14 -- PR615)

Mill-Max Mfg. Corp. • 190 Pine Hollow Road, Oyster Bay, NY 11771
516-922-6000 • Fax: 516-922-9253 • www.mill-max.com



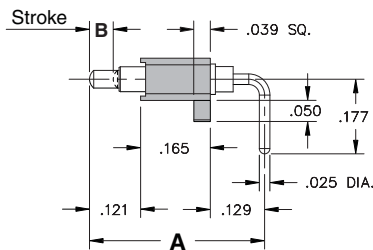
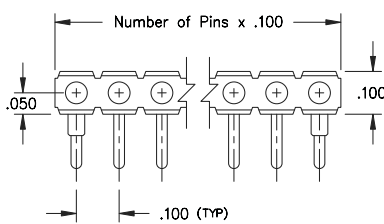
SPRING-LOADED CONNECTORS

SERIES 829 • .100" GRID RIGHT ANGLE MOUNT • SINGLE ROW STRIPS

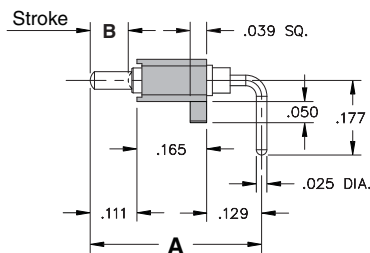


- Modular contacts for use on .100" grid. Supplied in single row strips with mounting pegs for support
- Precision-machined piston / base and gold-plated components assure a 1,000,000 cycle life durability
- Low resistance, high current contacts are rated at 2 amps continuous, 3 amps peak
- High temperature thermoplastic insulators are suitable for wave and reflow processes
- 829 series contact strips are designed for manual placement into $\varnothing .032 \pm .003$ " plated through-holes in the circuit board prior to wave or reflow soldering

SINGLE ROW Series 829

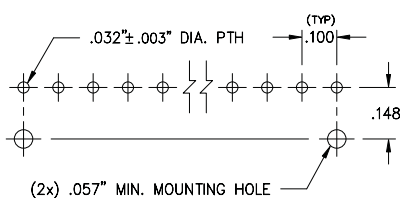


Contact style 1 only



Contact style 2 only

Suggested P.C.B Footprint



ORDERING INFORMATION

Single Row Series 829

829-22-0XX-20-00X101

Specify number of contacts 01-20

Specify contact style 1 or 2

| CONTACT STYLE | INITIAL LENGTH A | MAX. STROKE B |
|---------------|------------------|---------------|
| 1 | .415 | .055 |
| 2 | .406 | .090 |

Technical Specifications

Materials:

Contact piston & base: Machined copper alloy plated 20 μ " gold over 100 μ " nickel
 Spring: Beryllium copper-plated 10 μ " gold
 Insulator: High temperature thermoplastic, rated UL94 V-0

Mechanical:

Spring force @ initial length (A): 25 grams
 Spring force @ mid stroke (B/2): 60 grams
 Durability: 1,000,000 cycles

Electrical:

Voltage rating: 100Vrms/150Vdc
 Current rating: 2A (continuous), 3A (peak) per contact
 Contact resistance: 20m Ω max.
 Insulation resistance: 10,000M Ω min.
 Dielectric strength: 700Vrms min.
 Capacitance: 1pF max.

RoHS-2
2011/65/EU



Mouser Electronics

Authorized Distributor

Click to View Pricing, Inventory, Delivery & Lifecycle Information:

[Mill-Max:](#)

[829-22-015-20-002101](#) [829-22-007-20-002101](#) [829-22-014-20-002101](#)