



Feature

- Completely prevent card popping out by making the eject method a unique one-action structure.
- Card ejection is possible by installing a card retainer lid on the frontage of the connector.
- Normal mount type
- Connector for SIM card with card detection switch
- Effective against EMI / ESD by soldering 4 metal shells to the mounting board
- RoHS compliant / Lead-free solder compliant
- Packing: Embossed packing (450 pieces / reel)

Application



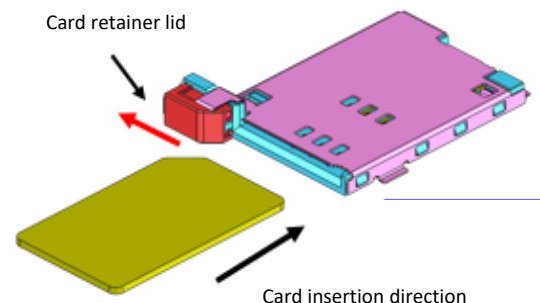
Specification

Rated current	0.5A
Rated voltage	DC 5Vrms.
Withstand voltage	AC 500Vrms.(1min)
Insulation resistance	DC500V 500MΩ or more
Contact resistance	10mA/20mV 100mΩ or less
Operating temperature	-55℃~ +85℃
Mating cycles	100

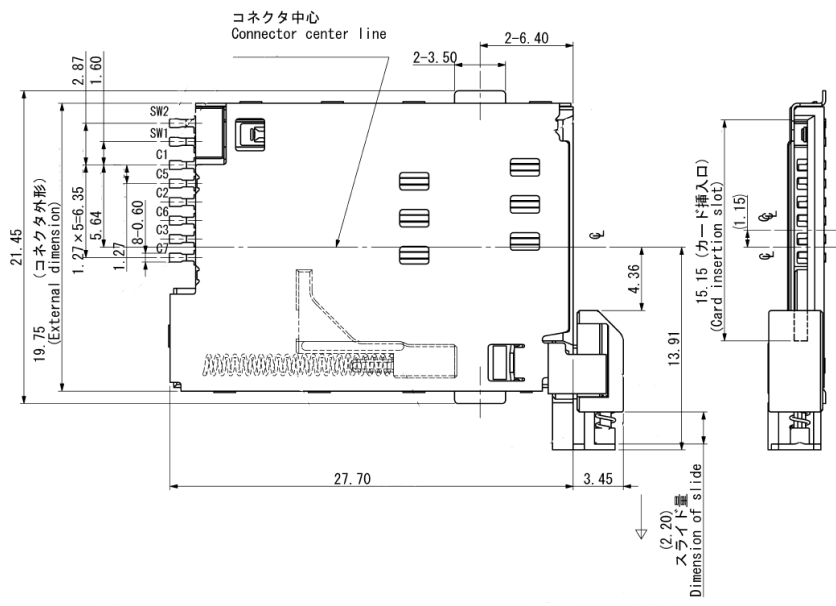
Product name

FMS006-2340-0-VE

When inserting the card, the C side of the card and the C side of the holding lid come into contact, and the card is inserted while sliding the card holding lid to the outside of the card.



Dimensional drawing



Recommended foot pattern

