



AMPLIMITE Right Angle Posted Connectors

Quick Reference Guide

We offer one of the broadest and most versatile portfolios of D-subminiature connectors in the market with unrivaled engineering support to address our customer's needs. Our reliable AMPLIMITE right angle posted connectors are available in a variety of plating types to satisfy different applications. These connectors are intermateable with any size 20 or 22 subminiature D connectors dimensionally complying with MIL-C-24308.

Features & Benefits

- Flame retardant thermoplastic housing material, UL 94V-0 rated.
- HD-20 right angle connectors are available in 9, 15, 25, and 37 positions in both plug and receptacle versions; some versions are available in 50 position.
- HD-22 right angle receptacle connectors are available in 15, 26, 44, 62, and 78 positions.
- Low cost front metal-shell design compatible with full metal-shell connectors.

Applications

- Industrial machinery
- Medical instrumentation
- Computers and peripherals
- RAID storage arrays
- File servers/routers
- Tape storage systems
- Work stations
- On-machine industrial communications
- Personal and handheld devices

AMPLIMITE Straight Posted Connectors

How to Select an AMPLIMITE Connector Part Number

The charts on the following pages highlight the AMPLIMITE part numbers with the key product attributes to help identify the correct part for your application. Each section also includes a list of materials to characterize the composition of each part.

AMPLIMITE PCB Mounting Style 2000 Subminiature Connectors

Shell Size	Contact Finish	Dimension L Ref.	Female Screwlocks	Threaded Inserts
9	A	1.210	2311765-1	-
	B		2311765-2	
15	A	1.540	-	2311767-1
25	A	2.090	2311766-1	2311762-1

Note: All part numbers are RoHS compliant.

Material and Finish

Housing: 94V-0 rated thermoplastic, black

Shell: Steel, nickel plated

Contact Plating:

A: gold flash on mating end, tin on solder tails with overall nickel underplated

B: .000015 gold on mating end, tin on solder end tails with overall nickel underplated

Boardlocks: Brass, tin plated

Female Screwlocks: Brass, nickel plated

Threaded Screwlocks: Brass, nickel plated

AMPLIMITE HD-22 Right Angle Posted Subminiature D Connectors

Material and Finish

Housing: 94V-0 rated thermoplastic, black

VESA Std. 15-position Receptacle

Housing Material: Thermoplastic 94V-0 blue per VESA standard

Shell: Steel, nickel plated

Contacts:

Pins: Brass

Sockets: Phosphor Bronze

Contact Plating: Gold Flash, .000015 or .000030 on mating end, tin on solder tails with overall nickel underplate

Boardlocks: Brass, tin plated

Female Screwlocks: Brass, nickel plated

Threaded Inserts: Brass, nickel plated

Right Angle Plugs

# of Contact Positions	Dim. A	Dim. B	Dim. C	Mounting Hardware	Mounting Style	30µ Gold
15	1.212	.984	.582	4-40 inserts	boardlocks	2311774-1
15	1.212	.984	.582	4-40 screwlocks	boardlocks	2311775-1
26	1.543	1.312	.583	4-40 inserts	boardlocks	2311776-1
44	2.089	1.852	.593	4-40 inserts	boardlocks	2311777-1
62	2.732	2.500	.593	4-40 inserts	boardlocks	2311773-1

Note: All part numbers are RoHS compliant.



Right Angle Receptacle



Right Angle Plug

Right Angle Receptacles

Contact Positions	Dim. A	Dim. B	Dim. C	Mounting Hardware	Mounting Style	Gold Flash	15 Gold	µ
15	1.212	.984	.630	4-40 inserts	boardlocks	2311763-2	-	2311763-3
15	1.212	.984	.630	4-40 screwlocks	boardlocks	-	-	2311763-1
15 VESA	1.212	.984	.630	4-40 inserts	boardlocks	2311586-4	-	2311586-5
15 VESA	1.212	.984	.630	4-40 screwlocks	boardlocks	2311586-1	-	-
26	1.543	1.311	.593	4-40 screwlocks	boardlocks	-	-	2311768-1
26	1.543	1.311	.593	4-40 screwlock	boardlocks	-	-	2311768-2
44	2.089	1.852	.583	4-40 inserts	boardlocks	-	-	2311770-1
44	2.089	1.852	.583	4-40 screwlocks	boardlocks	-	2311770-2	-
62	2.732	2.500	.583	4-40 inserts	boardlocks	-	-	2311771-1
78	2.638	2.400	.693	4-40 inserts	boardlocks	-	-	231177

Note: All part numbers are RoHS compliant.

AMPLIMITE Straight Posted Connectors

HD-20 Front Metal Shell Right Angle Posted Connectors 318 Mount

Plugs

Shell Size	# of Contact Positions	Dim. A	Dim. B	Dim. D	Dim. E	Contact Finish	Without Boardlocks			With Boardlocks		
							Standard Mounting Holes	Threaded Inserts	Fixed Female Screwlocks	Standard Mounting Holes	Threaded Inserts	Fixed Female Screwlocks
1	9	1.213	0.984	0.235	0.733	A	5747250-2	5747250-4	5747250-6	5747840-2	5747840-4	5747840-6
						B	-	5747250-3	-	-	5747840-3	5747840-5
2	15	1.541	1.312	0.235	0.733	A	5747236-2	5747236-4	5747236-6	5747841-2	5747841-4	5747841-6
						B	-	5747236-4	-	-	5747841-3	-
3	25	2.088	1.852	0.230	0.738	A	5747238-2	5747238-4	5747238-6	5747842-2	5747842-4	5747842-6
						B	5747238-2	5747238-3	-	-	5747842-3	5747842-5
4	37	2.729	2.500	0.230	0.740	A	-	5747252-4	-	5747843-2	5747843-4	5747843-6
						B	-	-	-	-	5747843-3	-

Receptacles

Shell Size	# of Contact Positions	Dim. A	Dim. B	Contact Finish	Without Boardlocks			With Boardlocks		
					Standard Mounting Holes	Threaded Inserts	Fixed Female Screwlocks	Standard Mounting Holes	Threaded Inserts	Fixed Female Screwlocks
1	9	1.213	0.984	A	5745781-2	5745781-4	5745781-6	5747844-2	5747844-4	5747844-6
				B	-	5745781-3	-	-	5747844-3	5747844-5
2	15	1.541	1.312	A	5745782-2	5745782-4	5745782-6	-	5747845-4	5747845-6
				B	-	-	-	-	5747845-3	5747845-5
3	25	2.088	1.852	A	5745783-2	5745783-4	5745783-6	5747846-2	5747846-4	5747846-6
				B	-	5745783-3	5745783-5	-	57478446-3	5747846-5
4	37	2.729	2.500	A	5745784-2	5745784-4	5745784-6	-	5747547-4	5747847-6

Material and Finish

Front Shell: Steel, tin plated

Housing: 94V-0 rated thermoplastic

Eyelets: Brass, tin plated

Threaded Inserts: Zinc

Female Screwlocks: Zinc

Boardlocks: Copper alloy, tin plated

Socket Contacts (Posted): Phosphor bronze, duplex plated

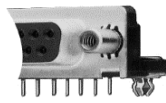
Pin contacts (posted): Brass, duplex plated as follows:

A: .000030 gold on mating end, tin on termination end, with entire contact nickel underplated

B: Gold flash on mating end, tin on termination end, with entire contact nickel underplated

Notes:

- All plug connectors are preloaded with size 20 DF posted pin contacts.
- Recommended PC board thickness is .062 [1.58] for connectors with boardlocks and .093 [2.36] max for all others.
- Male screw retainers are used as mating hardware for connectors with 4-40 female screwlocks.
- All part numbers are RoHS compliant.



With Fixed Female Screwlock



With Threaded Inserts



With Grounding Straps

HD-20 Front Metal Shell Right Angle Posted Connectors 318 Mount

Material and Finish

Front Shell: Steel, tin plated

Housing: 94V-0 rated thermoplastic, compatible with standard wave, vapor phase, and infra-red reflow (SMT) soldering, black

Eyelets: Brass, tin plated

Threaded Inserts: Zinc

Female Screwlocks: Zinc

Boardlocks: Copper alloy, tin plated

Pin Contacts (Posted): Brass, duplex plated as follows:

A: .000030 gold on mating end, tin on termination end, with entire contact nickel underplated

B: Gold flash on mating end, tin on termination end, with entire contact nickel underplated

Plugs with Boardlocks

Shell Size	# of Contact Positions	Dim. A	Dim. B	Dim. D	Dim. E	Contact Finish	Threaded Inserts	Fixed Female Screwlocks
1	9	1.213	0.984	0.235	0.733	A	5788792-1	5788793-1
						B	5788792-2	5788793-2
3	25	2.088	1.852	0.230	0.738	A	5788794-1	5788795-1
						B	5788794-2	-

Notes:

- All plug connectors are preloaded with size 20 DF posted pin contacts.
- Recommended PC board thickness is .062 [1.58] for connectors with boardlocks and .093 [2.36] max for all others.
- Male screw retainers are used as mating hardware for connectors with 4-40 female screwlocks.
- All part numbers are RoHS compliant.

AMPLIMITE Straight Posted Connectors

HD-20 Front Metal Shell Right Angle Posted Connectors 318 Mount

Material and Finish

Front Shell: Steel, tin plated

Housing: 94V-0 rated thermoplastic, compatible with standard wave, vapor phase, and infra-red reflow (SMT) soldering, black

Eyelets: Brass, tin plated

Threaded Inserts: Zinc

Female Screwlocks: Zinc

Boardlocks: Copper alloy, tin plated

Pin Contacts (Posted): Phosphor bronze, duplex plated as follows:

A: .000030 gold on mating end, tin on termination end, with entire contact nickel underplated

B: Gold flash on mating end, tin on termination end, with entire contact nickel underplated

Receptacles

Shell Size	# of Contact Positions	Dim. A	Dim. B	Contact Finish	Without Boardlocks		With Boardlocks	
					Fixed Female Screwlocks	Threaded Inserts	Fixed Female Screwlocks	
1	9	1.213	0.984	A	5788803-1	5788796-1	5788797-1	
				B	-	5788796-2	5788797-2	
2	15	1.541	1.312	A	-	5788798-1	5788799-1	
				B	-	5788798-1	-	
3	25	2.088	1.852	A	-	5788800-1	5788801-1	
				B	-	5788800-2	5788801-2	
4	37	2.729	2.500	A	-	5788802-1	-	

HD-20 Full Metal Shell Right Angle Posted Connector 454 Mount

Receptacles

Shell Size	# of Contact Positions	Dim. A	Dim. B	Dim. D	Dim. E	Contact Finish	Part #
1	9	1.213	0.984	0.915	0.125	A	5745438-4
					0.220	B	5745438-1
3	25	2.088	1.852	0.919	0.125	A	5745440-4
					0.220	B	5745440-1
4	37	2.729	2.500	0.919	0.125	A	5745441-4

Material and Finish

Shell: Steel, tin plated

Insert: 94V-0 rated thermoplastic, black

Contacts (Posted):

Pin: Brass

Socket: Phosphor bronze

Contact Plating:

A: .000030 gold on mating end, tin on termination end, with entire contact nickel underplated

B: Gold flash on mating end, tin on termination end, with entire contact nickel underplated

HD-20 Full Metal Shell Right Angle Posted Connector 454 Mount

Plugs

Shell Size	# of Contact Positions	Dim. A	Dim. B	Dim. C	Dim. D	Dim. E	Contact Finish	Part #
1	9	1.213	.984	.235	.915	.125	A	5745434-8
2	15	1.541	1.312	.235	.915	.125	A	5745435-8
3	25	2.088	1.852	.230	.919	.220	B	5745436-3
4	37	2.729	2.50	.230	.919	.220	B	5745437-3

Notes:

- All connectors are preloaded with size 20 DF posted contacts; plugs with pin contacts and receptacles with socket contacts.
- .125 [3.18] post length is recommended for PC board thickness of .093 [2.36] max; .220 [5.59] post length is recommended for PC board thickness of .125 [3.18] max.
- All part numbers are RoHS compliant.



Plug without Grounding Indents

Material and Finish

Shell: Steel, tin plated

Insert: 94V-0 rated thermoplastic, black

Contacts (Posted):

Pin: Brass

Socket: Phosphor bronze

Contact Plating:

A: .000030 gold on mating end, tin on termination end, with entire contact nickel underplated

B: Gold flash on mating end, tin on termination end, with entire contact nickel underplated

Receptacle Part Numbers with Boardlocks

Shell Size	# of Contact Positions	Dim. A	Dim. B	Contact Finish	Threaded Inserts
15	9	1.213	0.984	A	5747852-4

Notes:

- All receptacle connectors are preloaded with size 20 DF posted socket contacts.
- Recommended PC board thickness is .062 [1.58] for connectors with boardlocks and .093 [2.36] max for all others.
- Male screw retainers are used as mating hardware for connectors with 4-40 female screwlocks.
- All part numbers are RoHS compliant.



Plug with Grounding Indents

Material and Finish

Front Shell: Steel, tin plated

Housing: 94V-0 rated thermoplastic, compatible with standard wave, vapor phase, and infra-red reflow (SMT) soldering, black

Eyelets: Brass, tin plated

Threaded Inserts: Zinc

Female Screwlocks: Zinc

Boardlocks: Copper alloy, tin plated

Socket Contacts (Posted): Phosphor bronze, duplex plated as follows:

A: .000030 gold on mating end, tin on termination end, with entire contact nickel underplated

B: Gold flash on mating end, tin on termination end, with entire contact nickel underplated

AMPLIMITE Straight Posted Connectors

HD-20 Full Metal Shell Right Angle Posted Connector 545 Mount



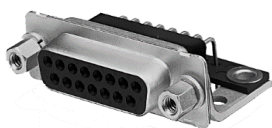
Plug without Grounding Indents



Plug with Grounding Indents



Plug with 4-40 Female Screwlocks



Receptacle with 4-40 Female Screwlocks



Receptacle with Standard Mounting Screw

Plugs

Shell Size	# of Contact Positions	Dim. A	Dim. B	Dim. C	Dim. D	Dim. E	Contact Finish	Without Grounding Indents		Female Screwlocks
								Standard Mounting Screws	Standard Mounting Screws	
1	9	1.213	0.984	0.494	0.235	1.025	A	5745351-2	5745351-4	5747197-4
2	15	1.541	1.312	0.494	0.235	1.025	A	-	5745352-4	-
3	25	2.088	1.852	0.494	0.230	1.029	A	-	-	5747022-2
4	37	2.729	2.500	0.605	0.230	1.029	A	-	5745354-4	-
5	50	2.635	2.406	0.605	0.230	1.149	A	-	5745355-4	5747497-4

Material and Finish

Shell: Steel, tin plated

Insert: 94V-0 rated thermoplastic, black

Female Screwlock: Steel, zinc plated

Pin Contacts (Posted): Brass, duplex plated as follows:

A: .000030 gold on mating end, tin on termination end, with entire contact nickel underplated

Receptacles

Material and Finish

Shell: Steel, tin plated

Insert: 94V-0 rated thermoplastic, black

Female Screwlocks: Steel, zinc plated

Socket Contacts (Posted): Phosphor bronze, duplex plated as follows:

A: .000030 gold on mating end, tin on termination end, with entire contact nickel underplated

B: Gold flash on mating end, tin on termination end, with entire contact nickel underplated

Shell Size	# of Contact Positions	Dim. A	Dim. B	Dim. C	Dim. E	Contact Finish	Standard Mounting Screws	Female Screwlocks
						B	-	5747020-1
2	15	1.541	1.312	0.494	1.033	A	5745113-2	-
3	25	2.088	1.852	0.494	1.033	A	5745114-2	5745536-2
4	37	2.729	2.500	0.494	1.033	A	5745115-2	-
5	50	2.635	2.406	0.605	1.153	A	5745116-2	5747193-2
						B	5745116-1	5747193-1

Notes:

1. All plugs are preloaded with size 20 DF posted pin contacts.
2. Recommended PC boards thickness is 0.93 [2.36] max.
3. Male screw retainers are used as mating hardware for connectors with 4-40 female screwlocks.

HD-20 Front Metal Shell Right Angle Posted Connector 590 Mount

Plugs

Shell Size	# of Contact Positions	Dim. A	Dim. B	Dim. D	Dim. E	Contact Finish	Without Boardlocks		Fixed Female Screwlocks
							Threaded Inserts	Threaded Inserts	
1	9	1.213	0.984	0.235	0.965	A	5745990-4	5747832-4	5747832-6
						B	5745990-3	-	-
2	15	1.541	1.312	0.235	0.965	A	-	5747833-4	5747833-6
3	25	2.088	1.852	0.230	0.970	A	5745994-4	5747834-4	5747834-6
4	37	2.729	2.500	0.230	0.972	A	-	5747835-4	5747835-6

Material and Finish

Front Shell: Steel, tin plated

Housing: 94V-0 rated thermoplastic, black

Eyelets: Brass, tin plated

Threaded Inserts: Zinc

Female Screwlocks: Zinc

Boardlocks: Copper alloy, tin plated

Pin Contacts (Posted): Phosphor bronze, duplex plated as follows:

A: .000030 gold on mating end, tin on termination end, with entire contact nickel underplated

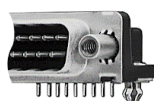
B: Gold flash on mating end, tin on termination end, with entire contact nickel underplated

AMPLIMITE Straight Posted Connectors

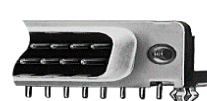
HD-20 Front Metal Shell Right Angle Posted Connector 590 Mount



Plug with Grounding Indents and Grounding Straps



Plug with Fixed Female Screwlocks



Plug with Threaded Inserts

Material and Finish

Front Shell: Steel, tin plated

Housing: 94V-0 rated thermoplastic, black

Eyelets: Brass, tin plated

Threaded Inserts: Zinc

Female Screwlocks: Zinc

Boardlocks: Copper alloy, tin plated

Pin Contacts (Posted): Phosphor bronze, duplex plated as follows:

A: .000030 gold on mating end, tin on termination end, with entire contact nickel underplated

B: Gold flash on mating end, tin on termination end, with entire contact nickel underplated

Receptacles

Shell Size	# of Contact Positions	Dim. A	Dim. B	Contact Finish	Without Boardlocks		With Boardlocks	
					Threaded Inserts	Fixed Female Screwlocks	Threaded Inserts	With Fixed Female Screwlocks
1	9	1.213	0.984	A	5745988-4	5745988-6	5747836-4	5747836-6
2	15	1.541	1.312	A	5745984-4	-	5747837-4	-
3	25	2.088	1.852	A	-	5745992-6	5747838-4	5747838-6
				B	5745992-3	-	5747838-3	-
4	37	2.729	2.500	A	5745996-4	-	5747839-4	-

Notes:

- All plug connectors are preloaded with size 20 DF posted pin contacts.
- Recommended PC board thickness is .062 [1.58] for connectors with boardlocks and .093 [2.36] max for others.
- Male screw retainers are used as mating hardware for connectors with 4-40 female screwlocks.

HD-20 All-Plastic Right Angle Posted Connectors 318 Mount

*Consult TE Connectivity for all availability

Shell Size	# of Contacts	Dim. A	Dim. B	Contact Finish	Threaded Inserts	Fixed Female Screwlocks
1	9	1.222	.984	A	-	5748979-1
3	25	2.090	1.852	A	5748901-1	5748981-1

With Threaded Inserts

Shell Size	# of Contacts	Dim. A	Dim. B	Contact Finish	Boardlocks	Without Boardlocks
2	15	1.550	1.312	A	5748904-1	-
3	25	2.090	1.852	A	-	5748865-3

Notes:

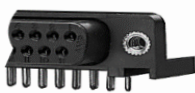
- All plug connectors are preloaded with size 20 DF posted socket contacts.
- Recommended PC board thickness is .062 [1.58].
- Male screw retainers are used as mating hardware for connectors with 4-40 female screwlocks.
- All part numbers are RoHS compliant.

Receptacle without Boardlocks

Shell Size	# of Contact Positions	Dim. A	Dim. B	Contact Finish	Threaded Inserts	Fixed Female Screwlocks	With .125 [3.18] Mounting Holes
1	9	1.213	0.984	A	5745394-2	5745395-2	-
				B	-	-	5745131-1
2	15	1.541	1.312	A	-	5745396-2	5745396-2
3	25	2.088	1.852	A	5745392-2	5745397-2	5745132-2

Notes:

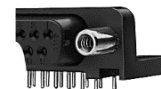
- All plug connectors are preloaded with size 20 DF posted socket contacts.
- Recommended PC board thickness is .093 [2.36].
- Male screw retainers are used as mating hardware for connectors with 4-40 female screwlocks.
- All part numbers are RoHS compliant.



With Threaded Insert



With Standard Mounting holes



With Fixed Female Screwlocks

Material and Finish

Housing: 94V-0 rated thermoplastic, black

Eyelets: Brass, tin plated

Threaded Inserts: Zinc

Female Screwlocks: Zinc

Boardlocks: Copper alloy, tin plated

Socket Contacts (Posted): Phosphor bronze, duplex plated as follows:

A: .000030 gold on mating end, tin on termination end, with entire contact nickel underplated

Pin Contacts (Posted)- Copper alloy, duplex plated as follows:

A: .000030 gold on mating end, tin on termination end, with entire contact nickel underplated

B: Gold flash on mating end, tin on termination end, with entire contact nickel underplated

Material and Finish

Housing: 94V-0 rated thermoplastic, black

Threaded Inserts: Zinc, chromate coated

Female Screwlocks: Zinc, chromate coated

Socket Contacts (Posted): Phosphor bronze, duplex plated as follows:

A: .000030 gold on mating end, tin on termination end, with entire contact nickel underplated

B: Gold flash on mating end, tin on termination end, with entire contact nickel underplated

AMPLIMITE Straight Posted Connectors

HD-20 All-Plastic Right Angle Posted Connectors 590 Mount

Receptacle with Boardlocks

Shell Size	# of Contacts	Dim. A	Dim. B	Contact Finish	Boardlocks	Without Boardlocks
1	9	1.213	.984	B	5748907-2	-
3	25	2.088	1.852	A	5748909-1	5748989-1

Notes:

- All receptacle connectors are preloaded with size 20 DF posted socket contacts.
- Recommended PC board thickness is .062 [1.58].
- Male screw retainers are used as mating hardware for connectors with 4-40 female screwlocks.
- All part numbers are RoHS compliant.

Material and Finish

Housing: 94V-0 rated thermoplastic, black

Eyelets: Brass, tin plated

Threaded Inserts: Zinc

Female Screwlocks: Zinc

Boardlocks: Copper alloy, tin plated

Socket Contacts (Posted): Phosphor bronze, duplex plated as follows:

A: .000030 gold on mating end, tin on termination end, with entire contact nickel underplated

B: Gold flash on mating end, tin on termination end, with entire contact nickel underplated

Material and Finish

Housing: 9V-0 rated thermoplastic, black

Threaded Inserts: Zinc, chromate coated

Female Screwlocks: Zinc, chromate coated

Socket Contacts (Posted): Phosphor bronze, duplex plated as follows:

A: .000030 gold on mating end, tin on termination end, with entire contact nickel underplated

B: Gold flash on mating end, tin on termination end, with entire contact nickel underplated

Pin Contacts (Posted): Phosphor bronze, duplex plated as follows:

A: .000030 gold on mating end, tin on termination end, with entire contact nickel underplated

B: Gold flash on mating end, tin on termination end, with entire contact nickel underplated

Receptacle without Boardlocks

Shell Size	# of Contact Positions	Dim. A	Dim. B	Contact Finish	Threaded Inserts	Fixed Female Screwlocks	.125 [3.18] Mounting Holes
1	9	1.213	0.984	A	5747459-4	5747459-6	5747459-2
				B	5747459-3	5747459-5	5747459-1
2	15	1.541	1.312	A	5747460-4	5748948-1	-
				B	5747460-3	5747460-5	5747460-1
3	25	2.088	1.852	A	5747461-4	5747461-6	5747461-2
				B	5747461-3	5747461-5	5747461-1
4	37	2.729	2.500	A	5747462-4	5747462-6	5747462-2

Plug without Boardlocks

Shell Size	# of Contact Positions	Dim. A	Dim. B	Contact Finish	Threaded Inserts	Fixed Female Screwlocks	.125 [3.18] Mounting Holes
1	9	1.213	0.984	A	5747467-4	-	5747467-2
				B	-	-	5747467-1
2	15	1.541	1.312	A	5748872-1	5748952-1	-
3	25	2.090	1.852	A	5748873-1	5748953-1	5748826-1
				B	-	-	5748826-2
4	37	2.729	2.500	A	-	-	5747470-2

Notes:

- All receptacle connectors are preloaded with size 20 DF posted socket contacts.
- Recommended PC board thickness is .093 [2.36] max.
- Male screw retainers are used as mating hardware for connectors with 4-40 female screwlocks.
- Dimension 1.115 [28.32] for size 5 d-sub, GPL 244.
- All part numbers are RoHS compliant.

Material and Finish

Housing: 9V-0 rated thermoplastic, black

Threaded Inserts: Zinc, chromate coated

Female Screwlocks: Zinc, chromate coated

Socket Contacts (Posted): Phosphor bronze, duplex plated as follows:

A: .000030 gold on mating end, tin on termination end, with entire contact nickel underplated

B: Gold flash on mating end, tin on termination end, with entire contact nickel underplated

Pin Contacts (Posted): Phosphor bronze, duplex plated as follows:

A: .000030 gold on mating end, tin on termination end, with entire contact nickel underplated

B: Gold flash on mating end, tin on termination end, with entire contact nickel underplated

HD-20 Right Angle Receptacle

# of Contact Positions	Dim. A	Dim. B	Dim. C	Mounting Hardware	PCB Mounting Style	Part Number
9	.643	.984	1.213	4-40 inserts	boardlocks	2301844-1
9	.643	.984	1.213	4-40 screwlocks	boardlocks	2301844-2
15	.975	1.312	1.541	4-40 inserts	boardlocks	2301845-1
15	.975	1.312	1.541	4-40 screwlocks	boardlocks	2301845-2
25	1.509	1.852	2.088	4-40 screwlocks	boardlocks	2301846-1

AMPLIMITE Straight Posted Connectors

HD-20 Right Angle Plug

# of Contact Positions	Dim. A	Dim. B	Dim. C	Mounting Hardware	PCB Mounting Style	Part Number
9	.665	.984	1.213	4-40 inserts	boardlocks	2301843-1
9	.665	.984	1.213	4-40 screwlocks	boardlocks	2301843-2

Right Angle Mounting Connectors-European Standard Footprint

Plug with Boardlocks-Solder Termination

# of Contacts	3mm Hole	4-40 Inserts	4-40 Screwlocks	M3 Inserts
9	338168-2	1-338168-2	3-338168-2	2-338168-2
15	338169-2	1-338169-2	3-338169-2	2-338169-2
25	338170-2	1-338170-2	3-338170-2	2-338170-2
37	-	-	-	2-338171-2

Plug without Boardlocks-Solder Termination

# of Contacts	3mm Hole	4-40 Inserts	4-40 Screwlocks
9	5-338168-2	6-338168-2	8-338168-2
15	5-338169-2	6-338169-2	8-339169-2
25	5-338170-2	6-338170-2	8-338170-2
37	5-338171-2	6-338171-2	-

Socket without Boardlocks-Solder Termination

# of Contacts	3mm Hole	4-40 Inserts	4-40 Screwlocks
9	5-106505-2	6-106505-2	8-106505-2
15	5-106506-2	6-106506-2	8-106506-2
25	5-106507-2	6-106507-2	8-106507-2

Sockets with Boardlocks-Solder Termination

# of Contacts	3mm Hole	4-40 Inserts	4-40 Screwlocks	M3 Inserts
9	106505-2	1-106505-2	3-106505-2	2-106505-2
15	106506-2	1-106506-2	3-106506-2	2-106506-2
25	106507-2	1-106507-2	3-106507-2	2-106507-2

Material and Finish

Front Shell: 94V-0 rated thermoplastic, black

Housing: Black glass-filled polyester

Flammability: UL 94V-0

Contact Material:

Pin: Phosphor Bronze

Socket: Phosphor Bronze

Contact Area Plating: 0.76 μ m Gold

Current Rating: 6A max.

Insulation Resistance: 5000 M Ω min.

Dielectric Strength: 1000V AC min.

Temperature Rating: -55°C to +105°C



*Right Angle
Europe Solder*

Press Fit Termination, Right Angle Mounting-European Standard Footprint

Plug with Boardlocks-Press Fit Termination

# of Contacts	4-40 Inserts	4-40 Screwlocks	M3 Inserts	M3 Screwlocks
9	3-193481-2	3-1393481-8	2-1393481-5	On Inquiry
5	3-1393481-3	3-1393481-9	2-1393481-6	On Inquiry
25	3-1393481-4	2-1393497-7	2-1393481-7	On Inquiry
37	-	-	2-1393481-8	On Inquiry

Socket with Boardlocks-Press Fit Termination

# of Contacts	M3 Inserts
9	1-1393482-2

Material and Finish

Front Shell: Steel, tin plated

Housing: Black thermoplastic PBTP/PPS

Flammability: UL 94V-0

Contact Material:

Pin: Copper alloy

Socket: Copper alloy

Contact Area Plating: Nickel/gold (>250 mating cycles)

Current Rating: 2.2A

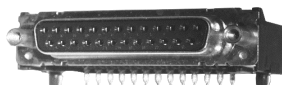
Insulation Resistance: 5000 M Ω min.

Dielectric Strength: 1000V AC

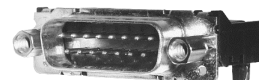
Temperature Rating: -55°C to +125°C

Socket with Boardlocks-Press Fit Termination

# of Contacts	4-40 Inserts	4-40 Screwlocks	M3 Inserts	M3 Screwlocks
9	2-1393481-9	3-1393481-6	2-1393481-1	On Inquiry
5	-	2-1393497-4	-	On Inquiry
25	-	2-1393497-5	-	On Inquiry
37	2-1392010-6	2-1393497-6	-	On Inquiry



European Press Fit



Eurostyle Press Fit

AMPLIMITE Straight Posted Connectors

Right Angle Mounting Connectors-Eurostyle Footprint

Plug with Boardlocks-Solder Termination

# of Contacts	3mm Hole	4-40 Inserts	4-40 Screwlocks	M3 Screwlocks
9	5-1393480-9	8-1393480-5	1393481-5	9-1393480-4
15	6-1393480-0	8-1393480-6	3-1392010-3	9-1393480-5
25	On Inquiry	8-1393480-7	1393481-6	9-1393480-6
37	On Inquiry	8-1393480-8	3-1392010-4	On Inquiry

Socket with Boardlocks-Solder Termination

# of Contacts	3mm Hole	4-40 Inserts	4-40 Screwlocks	M3 Screwlocks
9	5-1393480-5	8-1393480-1	9-1393480-9	9-1393480-0
5	5-1393480-6	8-1393480-2	1393481-1	9-1393480-1
25	5-1393480-7	8-1393480-3	1393481-2	9-1393480-2
37	On Inquiry	8-1393480-4	3-1392010-7	On Inquiry

Plug without Boardlocks-Solder Termination

# of Contacts	3mm Hole	4-40 Inserts	4-40 Screwlocks	M3 Inserts	M3 Screwlocks
9	2-1393480-1	4-1393480-0	5-1393480-2	3-1393480-2	On Inquiry
5	2-1393489-2	-	5-1393480-3	3-1393480-3	On Inquiry
25	2-1393480-3	4-1393480-2	5-1393480-4	2-1392010-8	On Inquiry
37	2-1393480-4	4-1393480-3	3-1392010-5	3-1392010-6	On Inquiry

Socket without Boardlocks-Solder Termination

# of Contacts	3mm Hole	4-40 Inserts	4-40 Screwlocks	M3 Inserts	M3 Screwlocks
9	1-1393480-7	3-1393480-6	4-1393480-7	2-1393480-8	On Inquiry
5	1-1393480-8	3-1393480-7	4-1393480-9	2-1393480-9	On Inquiry
25	1-1393480-9	3-1393480-8	4-1393480-9	3-1393480-0	On Inquiry
37	2-1393480-0	3-1393480-9	5-1393480-0	3-1392010-8	On Inquiry

Material and Finish

Front Shell: Steel, tin plated

Housing: Grey thermoplastic PBTP

Flammability: UL 94V-0

Contact Material:

Pin: Copper alloy

Socket: Copper alloy

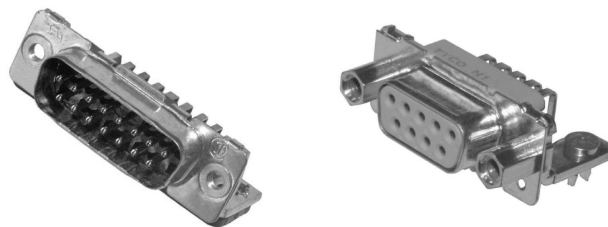
Contact Area Plating: Nickel/gold (>250 mating cycles)

Current Rating: 2.2A

Insulation Resistance: 5000 M Ω min.

Dielectric Strength: 1000V AC

Temperature Rating: -55°C to +125°C



AMPLIMITE Straight Posted Connectors

Resources:

Product Specification	Application Specification
108-1228	114-40029
108-1226	114-40015
108-40025	114-40027
108-1092	114-40010
108-57541	114-40013
	114-13198
Instruction Sheet	
408-9427	

TE Technical Support Center

USA:	1.800.522.6752
Canada:	1.905.475.6222
Mexico:	52.0.55.1106.0800
Latin/S. America:	54.0.11.4733.2200
Germany:	49.0.6251.133.1999
UK:	44.0.800.267666
France:	33.0.1.3420.8686
Netherlands:	31.0.73.6246.999
China:	86.0.400.820.6015

te.com

AMP, AMPLIMITE, TE Connectivity, TE Connectivity (logo) and EVERY CONNECTION COUNTS are trademarks of the TE Connectivity Ltd. family of companies.

All other logos, products and/or company names referred to herein might be trademarks of their respective owners.

The information given herein, including drawings, illustrations and schematics which are intended for illustration purposes only, is believed to be reliable. However, TE Connectivity makes no warranties as to its accuracy or completeness and disclaims any liability in connection with its use. TE Connectivity's obligations shall only be as set forth in TE Connectivity's Standard Terms and Conditions of Sale for this product and in no case will TE Connectivity be liable for any incidental, indirect or consequential damages arising out of the sale, resale, use or misuse of the product. Users of TE Connectivity products should make their own evaluation to determine the suitability of each such product for the specific application.

© 2018 TE Connectivity Ltd. family of companies All Rights Reserved.

1-1773963-3 10/18