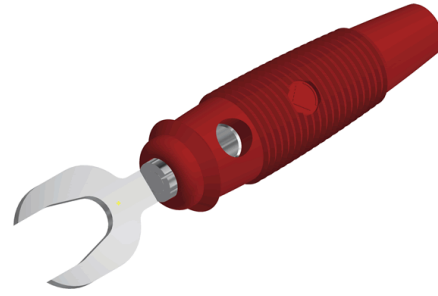






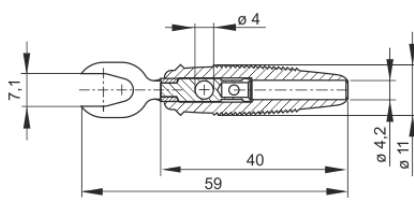


Plugs

KB 3



Product	KB 3
description	Cable lug with shatter-proof, flexible insulated sleeve with 4 mm diameter transverse hole. Solder connection up to a maximum of 2.5 mm ² . For connection to bolts from 4 mm to 7 mm diameter. Nickel-plated brass contact material.
operating instruction	BA409
article-no. / *colour	9305851xx <div style="display: flex; justify-content: space-around; align-items: center;"> <div style="text-align: center;"> 00 black</div> <div style="text-align: center;"> 01 red</div> <div style="text-align: center;"> 02 blue</div> <div style="text-align: center;"> 03 yellow</div> <div style="text-align: center;"> 04 green</div> <div style="text-align: center;"> 07 white</div> </div> <div style="text-align: right; border: 1px solid black; padding: 2px; width: fit-content; margin-top: 5px;">Ni</div>
drawing	
technical data	
connection	solder connection
rated voltage ⁽¹⁾	30 VAC / 60 VDC
measurement cat. acc. to IEC 61010	O ⁽³⁾
rated current ⁽¹⁾ (consider derating curve)	30 A
material plug	brass, nickel plated
housing material	PVC-P
temperature range acc. To IEC61010 ⁽²⁾	-25 °C to +70 °C

4 mm system

⁽¹⁾ for normal environmental conditions 5°C to 40°C

⁽²⁾ contact the manufacturer for applications at deviating temperature ranges

⁽³⁾ without rated measurement category, for other circuits that are not directly connected to mains

stand: 09.06.2022