



## Series 80 Mighty Mouse Contacts and Tools #20, #16, #12 Contacts

### Size #20 Crimp Contacts

**A**

#20 Pin Contact

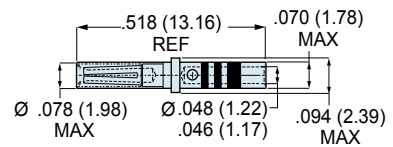
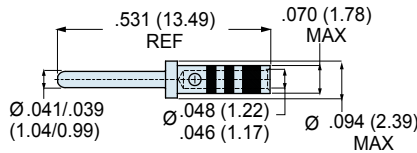


#20 Socket Contact



Standard size #20 contacts accept #20 to #24 AWG wire. At rated test current of 7.5 amps, the maximum voltage drop is 55 millivolts. Contacts are gold-plated copper alloy. Socket contacts feature stainless steel hoods to protect against probe damage. Approved to SAE-AMS-39029. Contacts are bulk packaged. Terminate with M22520/1-01 crimper and M22520/1-04 positioner.

Contact Type	Wire Size	Part Number	Military Part Number	Color Band			Tool Code
				1st	2nd	3rd	
Pin	#20 - #24	<b>850-002-20-363</b>	M39029/58-363	Orange	Blue	Orange	J, K
Socket	#20 - #24	<b>850-003-20-357</b>	M39029/57-357	Orange	Green	Violet	J, K



### Size #16 Crimp Contacts

#16 Pin Contact

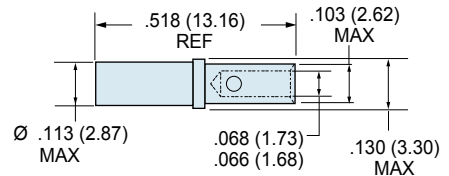
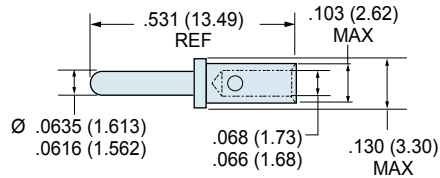


#16 Socket Contact



Standard size #16 contacts accept #16 to #20 AWG wire. At rated test current of 13 amps, the maximum voltage drop is 49 millivolts. Contacts are gold-plated copper alloy. Socket contacts feature stainless steel hoods to protect against probe damage. Approved to SAE-AMS-39029. Contacts are bulk packaged. Terminate with M22520/1-01 crimper and M22520/1-04 positioner.

Contact Type	Wire Size	Part Number	Military Part Number	Color Band			Tool Code
				1st	2nd	3rd	
Pin	#16 - #20	<b>809-110</b>	M39029/58-364	Orange	Blue	Yellow	J, K
Socket	#16 - #20	<b>809-111</b>	M39029/57-358	Orange	Green	Gray	J, K



### Size #12 Crimp Contacts

#12 Pin Contact

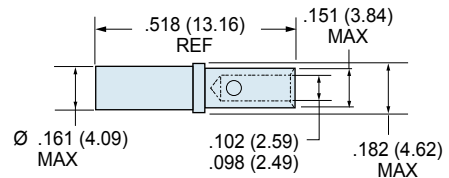
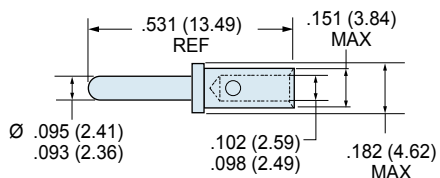


#12 Socket Contact



Standard size #12 contacts accept #12 to #14 AWG wire. At rated test current of 23 amps, the maximum voltage drop is 63 millivolts. Contacts are gold-plated copper alloy. Socket contacts feature stainless steel hoods to protect against probe damage. Approved to SAE AS39029. Contacts are bulk packaged. Terminate with M22520/1-01 crimper and M22520/1-04 positioner.

Contact Type	Wire Size	Part Number	Military Part Number	Color Band			Tool Code
				1st	2nd	3rd	
Pin	#12 - #14	<b>809-112</b>	M39029/58-365	Orange	Blue	Green	J, K
Socket	#12 - #14	<b>809-113</b>	M39029/57-359	Orange	Green	White	J, K



Dimensions in Inches (millimeters) are subject to change without notice.