

PLUG: MM-312-051-161-45WP
RECEPTACLE: MK-342-051-225-2200
PLUG: MN-311-051-161-45WP
RECEPTACLE: ML-341-051-225-2200
 XX-XXX-XXX-XXX-XXXX-XXX

PLUG

RECEPTACLE

SERIES

| | |
|--|--|
| MM .050" Rugged Metal I/O Connector MN .050" Rugged Plastic I/O Connector (MM & MN mate with MK, ML, MM, MN receptacles) | MK .050" Rugged Metal PC Board Mount Connector ML .050" Rugged Plastic PC Board Mount Connector (MK & ML mate with MK, ML, MM, MN plugs) |
|--|--|

BODY

| | |
|--|--|
| 2 2-Row (Sizes 9 thru 37) 3 3-Row (Size 51 & 69***) 4 4-Row (Size 100) | 2 2-Row (Sizes 9 thru 37) 3 3-Row (Size 51 & 69***) 4 4-Row (Size 100) |
|--|--|

| | |
|---|--|
| BODY STYLE: 1 Plug, straight, with ears | BODY STYLE: 4 Receptacle, straight, standard footprint |
|---|--|

| | |
|--|--|
| BODY MATERIAL: 1 Polyphenylene Sulfide (MN only) 2 Polyphenylene Sulfide with electroless nickel shell 3 Polyphenylene Sulfide with electrodeposited cadmium shell <input checked="" type="checkbox"/> 4 Polyphenylene Sulfide with hard anodized black shell 5 Polyphenylene Sulfide with stainless steel shell | BODY MATERIAL: 1 Polyphenylene Sulfide (ML only) 2 Polyphenylene Sulfide with electroless nickel shell 3 Polyphenylene Sulfide with electrodeposited cadmium shell <input checked="" type="checkbox"/> 4 Polyphenylene Sulfide with hard anodized black shell 5 Polyphenylene Sulfide with stainless steel shell |
|--|--|

SIZE

| | |
|--|--|
| XXX 009, 015, 021, 025, 031, 037, 051, 069***, 100 | XXX 009, 015, 021, 025, 031, 037, 051, 069***, 100 |
|--|--|

CONTACTS

| | |
|---|---|
| TYPE CONTACTS/TERMINATIONS: 11 Pin, straight, solder cup 14 Pin, straight, .500" pigtails (.018 dia) 15 Pin, straight, 1.000" pigtails (.018 dia) 16 Pin, straight, crimped wire | TYPE CONTACTS/TERMINATIONS: 22 Socket, straight, PCB leads, .109" 23 Socket, straight, PCB leads, .140" 24 Socket, straight, PCB leads, .172" |
|---|---|

| | |
|--|--|
| PLATING OPTIONS: 1 50 μ" Au contacts (crimp wire) 3 50 μ" Au contacts; 10 μ" Au terminations (solder cup, pigtail) 5 50 μ" Au contacts; Sn/Pb alloy terminations (pigtail) <input checked="" type="checkbox"/> 7 50 μ" Au contacts; SAC305 terminations (pigtail) | PLATING OPTIONS: 3 50 μ" Au contacts; 10 μ" Au terminations 5 50 μ" Au contacts; Sn/Pb alloy terminations <input checked="" type="checkbox"/> 7 50 μ" Au contacts; SAC305 terminations |
|--|--|

HARDWARE

| | |
|---|---|
| STYLE OF HARDWARE: 00 None 22 Two fixed jacknut assemblies (62*) 41 Two turning jackscrews, allen head, retaining ring (81*) 42 Two long turning jackscrews, allen head, retaining ring (82*) 43 Two turning jackscrews, slot head, retaining ring (83*) 44 Two long turning jackscrews, slot head, retaining ring (84*) 45 Two turning jackscrews, allen head, captivated** (85*) 99 Keying hardware, see options below (Body material 2, 3 and 4 only) | STYLE OF HARDWARE: 00 None 22 Two fixed jacknut assemblies (62*) 41 Two turning jackscrews, allen head, retaining ring**** (81*) 99 Keying hardware, see options below (Body material 2, 3 and 4 only) |
|---|---|

| | |
|---|---|
| POLARIZATION / WIRING: 00 None XX For wiring codes, see page MA-3 & MA-4 | POLARIZATION / WIRING 00 None |
|---|---|

OPTIONS

| | |
|---|---|
| KSXX Two turning jackscrews. See page MA-6 for keying options (KJ*) | KPXX Two fixed jacknuts and interfacial sealing gasket. See page MA-6 for keying options (KN*) 900 Interfacial sealing gasket 0B7 Threaded inserts and interfacial sealing gasket |
|---|---|

* = Use numbers or letters in parenthesis when ordering size 100. *** = 69 position connectors are available in metal only.
 ** = Captive hardware is factory installed and non-removable. **** = Connector body has no mounting holes.
 = Option not RoHS compliant



Cable to Board (Standard Footprint)

.050"

9 thru 100 Contacts

Rugged Cable

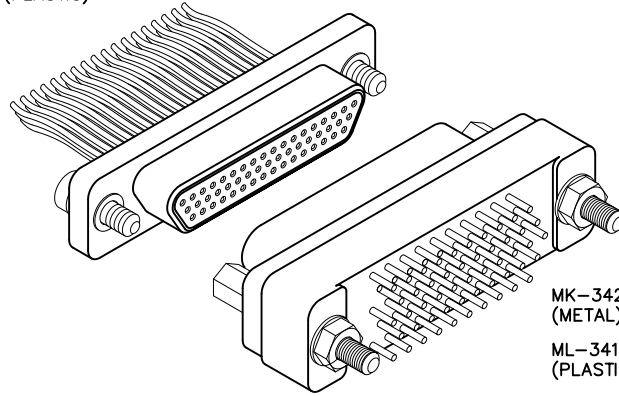
MM, MN

Rugged Board Mount

MK, ML

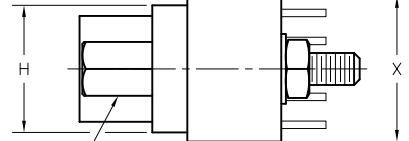
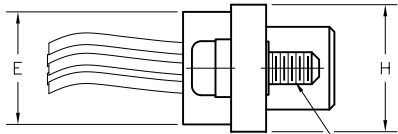
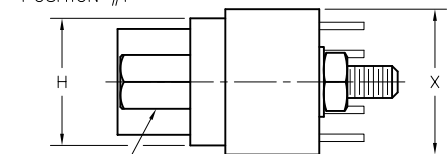
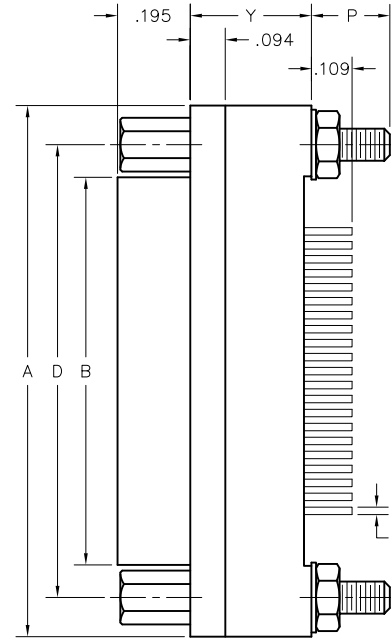
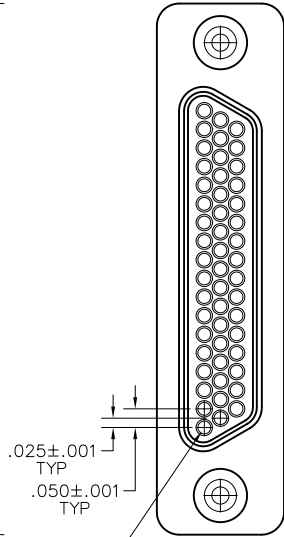
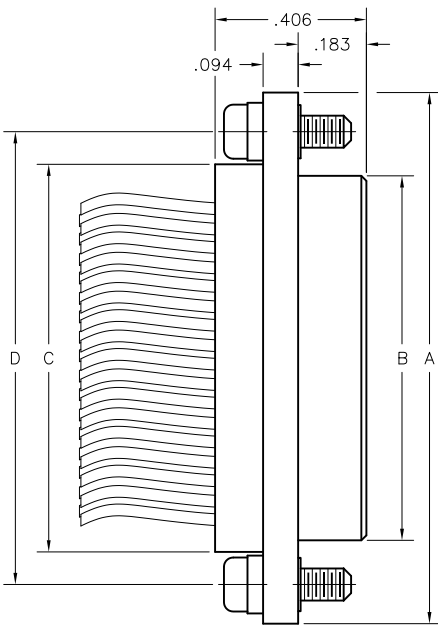
MM-312-051-161-45WP
(METAL)

MN-311-051-161-45WP
(PLASTIC)



MK-342-051-225-2200
(METAL)

ML-341-051-225-2200
(PLASTIC)



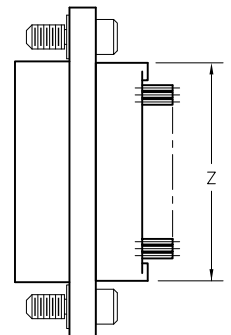
PLUG

#2-56 CAPTIVE JACKSCREW (2 PLCS)
SEE PAGE MA-5

#2-56 JACKPOST (2 PLCS)
SEE PAGE MA-5

RECEPTACLE

| SIZE | CONTACT ROWS | DIMENSIONS | | | | | | | | | | HARDWARE | |
|------|--------------|------------|----------|-------|-------|------------------|------|--------|-------|------|------|----------|---|
| | | A | B | | C | D | E | | H | P | X | | Y |
| | | PLUG MAX | RCPT MAX | | | POTTING WELL MAX | | | | | | | |
| 9 | 2 | .775 | .334 | .400 | .390 | .565 | .270 | .298 | .210 | .298 | .280 | .390 | #2-56 UNC THD (#2-56 CLEARANCE OR #2-56 UNC THREADED INSERT) |
| 15 | | .925 | .484 | .550 | .540 | .715 | | | | | | .540 | |
| 21 | | 1.075 | .634 | .700 | .690 | .865 | | | | | | .690 | |
| 25 | | 1.175 | .734 | .800 | .790 | .965 | | | | | | .780 | |
| 31 | | 1.325 | .884 | .950 | .940 | 1.115 | | | | | | .930 | |
| 37 | | 1.475 | 1.034 | 1.100 | 1.090 | 1.265 | .214 | .330** | 1.080 | | | | |
| 51 | 3 | 1.425 | .984 | 1.050 | 1.040 | 1.215 | .310 | .341 | .219 | .390 | .325 | 1.046 | #4-40 UNC THD (#4-40 CLEARANCE OR #4-40 UNC THREADED INSERT) |
| 69 | | 1.725 | 1.284 | 1.350 | 1.340 | 1.515 | | | | | | 1.346 | |
| 100 | | 2.160 | 1.384 | 1.508 | 1.432 | 1.800 | | | | | | .360 | |



* = 69 POSITION CONNECTORS ARE AVAILABLE IN METAL ONLY.
 ** = 37 POSITION WITH TURNING HARDWARE "Y" DIMENSION IS .280.
 *** = "Z" DIMENSION FOR TURNING JACKSCREW ONLY

Call (972) 931-3200 Fax (972) 931-9305 www.AirBorn.com

Mouser Electronics

Authorized Distributor

Click to View Pricing, Inventory, Delivery & Lifecycle Information:

AirBorn:

[MK-242-025-225-4100](#) [MK-342-051-235-2200](#) [MK-242-015-225-2200](#) [MK-242-015-235-2200](#) [MK-242-021-225-2200](#)
[MK-342-069-235-2200](#) [MK-342-051-225-4100](#) [MK-342-051-245-4100](#) [MK-342-069-245-2200](#) [MK-242-025-245-2200](#)
[MK-243-037-225-4100](#) [MK-243-009-225-4100](#) [MK-342-069-225-4100](#) [MK-342-051-245-2200](#) [MK-343-069-225-2200](#)
[MK-243-031-235-2200](#) [MK-342-069-245-4100](#) [MK-343-051-225-2200](#) [MK-242-015-225-4100](#) [MK-243-037-235-2200](#)
[MK-243-025-225-4100](#) [MK-245-037-245-2200](#) [MK-242-031-225-4100](#) [MK-243-015-245-2200](#) [MK-343-051-235-2200](#)
[MK-243-025-225-2200](#) [MK-243-031-225-2200](#) [MK-243-037-225-2200](#) [MK-442-100-245-6200](#) [MK-242-025-225-2200](#)
[MK-243-031-225-4100](#) [MK-242-037-245-2200](#) [MK-243-021-235-2200](#) [MK-243-021-245-2200](#) [MK-242-009-225-4100](#)
[MK-242-031-225-2200](#) [MK-242-031-235-2200](#) [MK-242-015-245-4100](#) [MK-343-051-245-2200](#) [MK-243-031-235-4100](#)
[MK-243-037-245-2200](#) [MK-243-015-235-2200](#) [MK-243-009-235-4100](#) [MK-242-037-245-4100](#) [MK-342-069-225-2200](#)
[MK-243-031-235-2200-900](#) [MK-242-009-243-2200](#)