

BLB102SURC-E-6V-P

HYPER RED

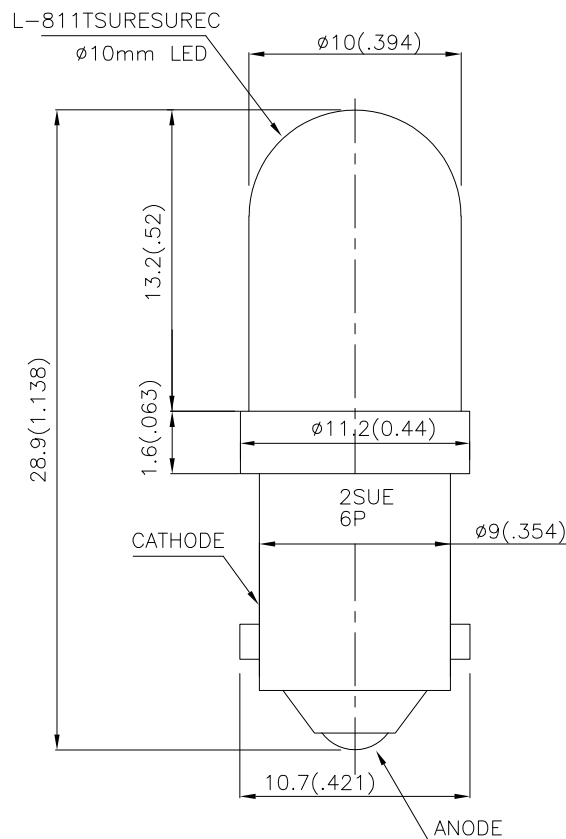
### Features

- BUILT-IN CURRENT LIMITING RESISTOR FOR DIRECT APPLICATION OF DIFFERENT ACROSS CURRENT.
- LONG LIFE.
- LOW CURRENT, POWER SAVINGS.
- LOW MAINTENANCE.
- SOLID STATE, HIGH VIBRATION RESISTANT.
- 6V INTERNAL RESISTOR.
- RoHS COMPLIANT.

### Description

The Hyper Red source color devices are made with DH InGaAlP on GaAs substrate Light Emitting Diode.

### Package Dimensions



#### Notes:

1. All dimensions are in millimeters (inches).
2. Tolerance is  $\pm 0.25$  (0.01") unless otherwise noted.
3. Specifications are subject to change without notice.

## Selection Guide

| Part No.          | Dice                | Lens Type   | Iv (mcd)<br>V=6V |      | Viewing Angle |
|-------------------|---------------------|-------------|------------------|------|---------------|
|                   |                     |             | Min.             | Typ. | 2θ1/2         |
| BLB102SURC-E-6V-P | HYPER RED (InGaAlP) | WATER CLEAR | 900              | 2200 | 40°           |

Note:

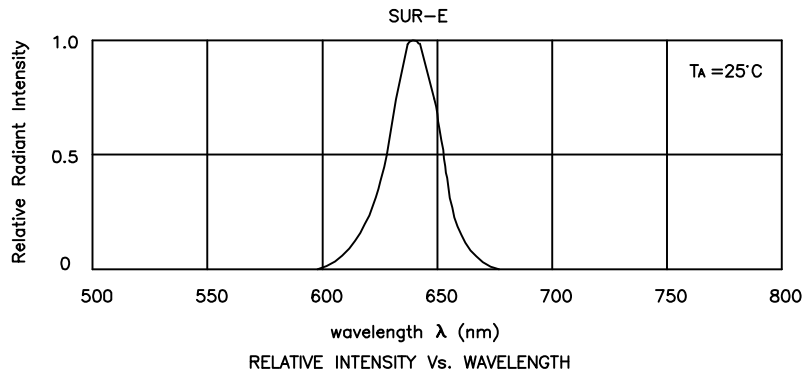
1. θ1/2 is the angle from optical centerline where the luminous intensity is 1/2 the optical centerline value.

## Electrical / Optical Characteristics at TA=25°C

| Symbol | Parameter                | Device    | Typ. | Max. | Units | Test Conditions |
|--------|--------------------------|-----------|------|------|-------|-----------------|
| λpeak  | Peak Wavelength          | Hyper Red | 640  |      | nm    | VF=6V           |
| λD     | Dominant Wavelength      | Hyper Red | 630  |      | nm    | VF=6V           |
| Δλ1/2  | Spectral Line Half-width | Hyper Red | 25   |      | nm    | VF=6V           |
| IF     | Forward Current          | Hyper Red | 23   |      | mA    | VF=6V           |
| IR     | Reverse Current          | Hyper Red |      | 10   | uA    | VR = 5V         |

## Absolute Maximum Ratings at TA=25°C

| Parameter             | Hyper Red      | Units |
|-----------------------|----------------|-------|
| Power dissipation     | 180            | mW    |
| Forward Voltage       | 7              | V     |
| Reverse Voltage       | 5              | V     |
| Operating Temperature | -40°C To +70°C |       |
| Storage Temperature   | -40°C To +85°C |       |



**Hyper Red**

**BLB102SURC-E-6V-P**

