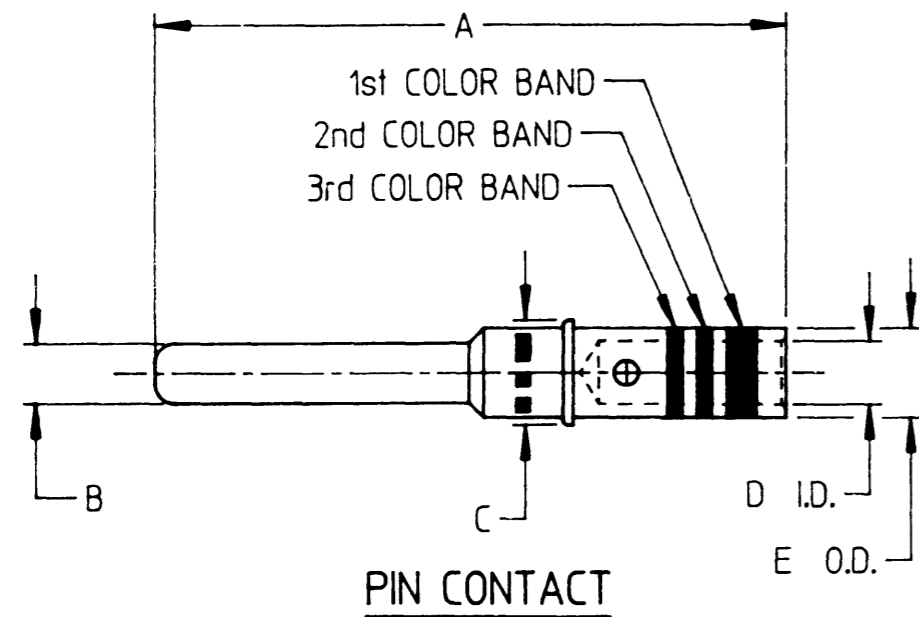
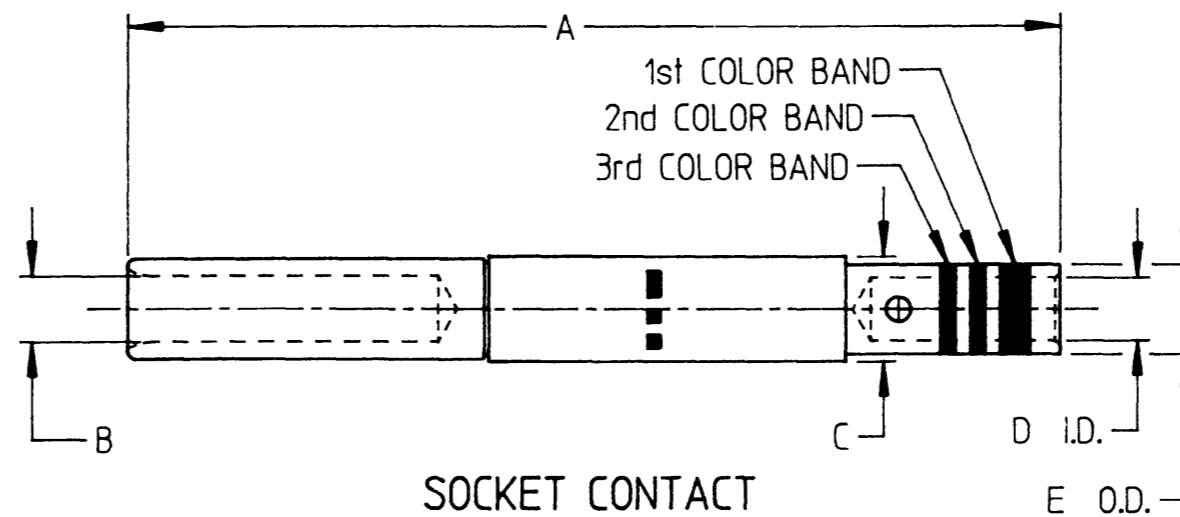


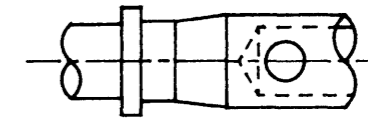
C	12341-** AND 12343-**	REVISIONS			
		REV	DESCRIPTION	DATE	APPROVED
		C	REVISED PER E.O. C1020	10-2-92	P



**PIN CONTACT**



**SOCKET CONTACT**



**WIRE BARREL CONFIGURATION**

12341-23  
12343-23  
CONTACTS ONLY

DEUTSCH PART NO.	MILITARY PART NO.	COLOR BANDS			SIZE	TYPE	WIRE GAGE RANGE	STRIP LENGTH ±.030	POSITIONER	INS/REM TOOL	WEIGHT	A MAX.	B DIA.	C MAX.	D MIN.	E MAX.
		1st	2nd	3rd												
12341-23	MIL-C-29600/24-610	BLUE	BROWN	BLACK	23	PIN	22 THRU 28	.192	M22520/2-13	M81969/16-04	.00023	.650	.0275/.0260	.058	.033	.050
12343-23	MIL-C-29600/23-606	BLUE	BLACK	BLUE	23	SOCKET	22 THRU 28	.192	M22520/2-16	M81969/16-04	.00057	.955	.031/.029	.058	.033	.050
12341-20	MIL-C-29600/24-611	BLUE	BROWN	BROWN	20	PIN	20 THRU 24	.232	M22520/2-14	M81969/16-01	.00034	.650	.041/.039	.079	.042	.063
12343-20	MIL-C-29600/23-607	BLUE	BLACK	VIOLET	20	SOCKET	20 THRU 24	.232	M22520/2-17	M81969/16-01	.00102	.955	.044/.042	.079	.042	.063
12341-16	MIL-C-29600/24-612	BLUE	BROWN	RED	16	PIN	16 THRU 20	.232	M22520/2-15	M81969/16-02	.00090	.650	.063/.061	.111	.062	.094
12343-16	MIL-C-29600/23-608	BLUE	BLACK	GREY	16	SOCKET	16 THRU 20	.232	M22520/2-18	M81969/16-02	.00190	.955	.068/.065	.111	.062	.094
12341-12	—	NONE	YELLOW	YELLOW	12	PIN	12 AND 14	.266	M22520/1-09	M81969/16-03	.00231	.680	.095/.093	.172	.097	.153
12343-12	—	NONE	YELLOW	YELLOW	12	SOCKET	12 AND 14	.266	M22520/1-10	M81969/16-03	.00517	.970	.100/.097	.172	.097	.153

5. FOR TERMINATION OF SIZE 23 THRU 16 CONTACTS, USE M22520/2-01 CRIMP TOOL WITH APPROPRIATE POSITIONER PER TAB BLOCK. FOR SIZE 12 CONTACTS, USE M22520/1-01 CRIMP TOOL WITH APPROPRIATE POSITIONER.

4. \*\* IN PART NUMBER INDICATES CONTACT SIZE.

3. MATERIAL: SOCKET BODY - COPPER ALLOY PER MIL-C-39029, COMPOSITION A. SOCKET HOOD - STAINLESS STEEL

2. FINISH: DEUTSCH ALLOY OVER NICKEL PER QQ-N-290.

1. DIMENSIONS ARE IN INCHES UNLESS OTHERWISE SPECIFIED.

NOTE:

SIGNATURE & DATE	
DR	R. GROSS 3-25-92
CHK	J. POWELL 4-15-92
PE	R. GROSS 3-25-92
APPD	
SCALE	NONE
WT	—

CONTACT, PIN AND SOCKET

CRIMP TYPE

SIZE 23 THRU 12 FOR DG123  
81511 INSERT TYPE CONNECTOR

ENVELOPE

CP	—	MATL CODE	—
<b>DEUTSCH</b> ENGINEERED CONNECTING DEVICES Municipal Airport Banning, California			
<b>B</b>	12341-** AND 12343-**		
	DWG SIZE	CODE 11139	SHEET 1 OF 1

C:\ANEX-14E2L

# Mouser Electronics

Authorized Distributor

Click to View Pricing, Inventory, Delivery & Lifecycle Information:

[TE Connectivity:](#)

[12341-23](#)