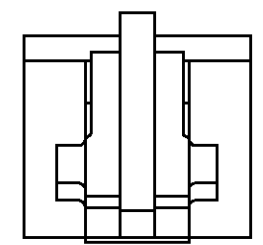
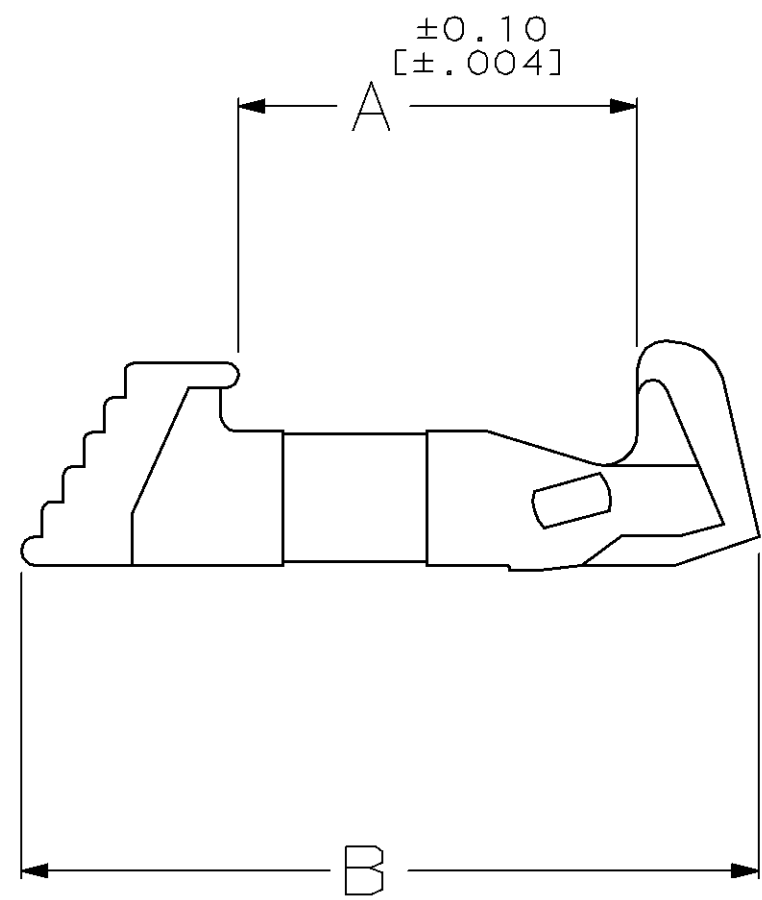
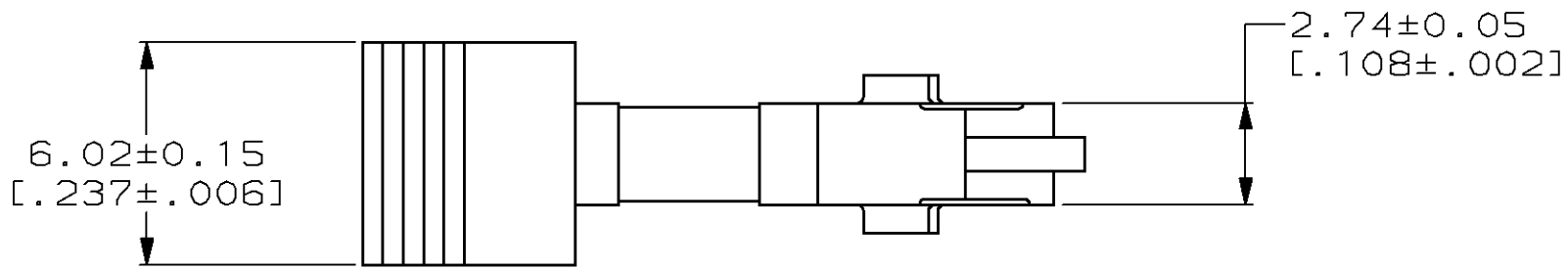


THIS DRAWING IS UNPUBLISHED. RELEASED FOR PUBLICATION, 19 .
 © COPYRIGHT 19 BY AMP INCORPORATED. ALL INTERNATIONAL RIGHTS RESERVED.

LOC	DIST	P	F	ZONE	LTR	DESCRIPTION	DATE	APPD
AR	35				O	RELEASED TO CUST	3-6-90	-
					A	REVISED PER ECN BD3979	5-14-90	FMH
					B	REVISED PER ECN BD4722	2-25-91	FMH
					C	REV PER ECN BD4931	04/04/91	FMH
					D	REV PER EC 0020-2-93	02/18/93	FMH
					E	OBS -4 EC 0020-460-95	07 NOV 95	DK
					F	SUPSD -2 PER EC 0020-377-95	17 JAN 96	DK
					G	REACTIVATE -2 PER EC 0020-637-96	10 JUN 96	DLK



21.56 [.849]	12.62 [.497]	$\triangle 1$ 111451-4
23.57 [.928]	14.63 [.576]	111451-3
20.98 [.826]	12.04 [.474]	111451-2
19.51 [.768]	10.57 [.416]	111451-1
B	A	PART NO

$\triangle 1$ OBSOLETE PART NUMBER.

DO NOT SCALE PRINT. UNLESS SPECIFIED DIMENSIONS IN mm [INCHES] TOLERANCES ON:		PART NO	
MATERIAL	POLYESTER, BLACK	AMP INCORPORATED Harrisburg, Pa. 17105	
FINISH	-	NAME EJECTOR LATCH, UNIV PIN CONN, AMP-LATCH™	
DR 3-6-90 C. OBERMAN	CHK 3-7-90 R. STONE	SIZE	B
APPD 3-7-90 F. M. HEINEY	APPD 3-8-90 D. HOFFMAN	CAGE CODE	00779
PRODUCT SPEC 108-1336	APPLICATION SPEC 114-7011	DRAWING NO	111451
WEIGHT -		SCALE	5:1
		SHEET	1 OF 1

Mouser Electronics

Authorized Distributor

Click to View Pricing, Inventory, Delivery & Lifecycle Information:

[TE Connectivity:](#)

[111451-3](#)