

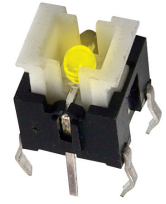


Feature :

- Small size
- Full color LED illuminated available
- Long electrical life cycles
- SMD and vertical PCB terminal

Applications :

- Consumer products
- Computer products
- Instrumentation
- Communication equipments

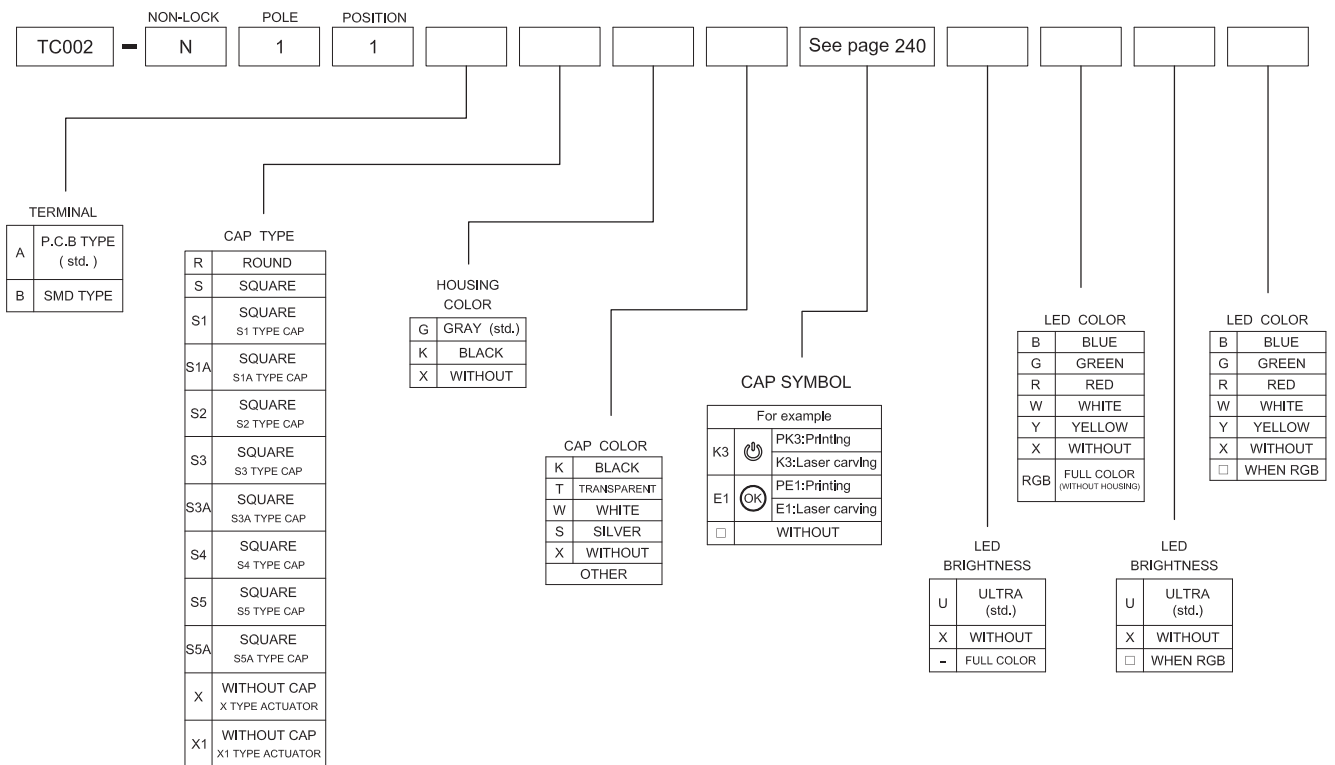


SWITCH SPECIFICATIONS	
POLE - POSITION	1P1T , with LED
CONTACT RATING	12 V DC , 50 mA
CONTACT RESISTANCE	100 mΩ MAX. 1.5 V DC ; 100 mA , by Method of Voltage DROP
INSULATION RESISTANCE	100 MΩ MIN. 500 V DC
DIELECTRIC STRENGTH	Breakdown is not Allowable ; 500 V AC for 1 Minute
OPERATING FORCE	180 ± 50 gf
OPERATING LIFE	500,000 cycles
OPERATING TEMPERATURE RANGE	-40°C ~ 85°C
TOTAL TRAVEL	0.2 ± 0.1 mm

LED SPECIFICATIONS								
ATTENTION LEDs are Electrostatic Sensitive devices (+) ○ (-)	Unit	Value / LED Color						
		Blue 10mA	Pure Green	Red	Yellow	Orange	Green	White
LUMINOUS INTENSITY@20mA Iv	mcd	200	800	1800	1800	1800	800	1500
Dominant Wavelength λD	nm	470	525	630	590	601	567	/
FORWARD VOLTAGE@20mA Vf	V	3.05	3.2	1.95	2	2.1	2.1	3.2

■ A single bin cannot be ordered, please contact us in advance if you need a particular bin sorting before placing your order to clarify the lead time, MOQ and pricing

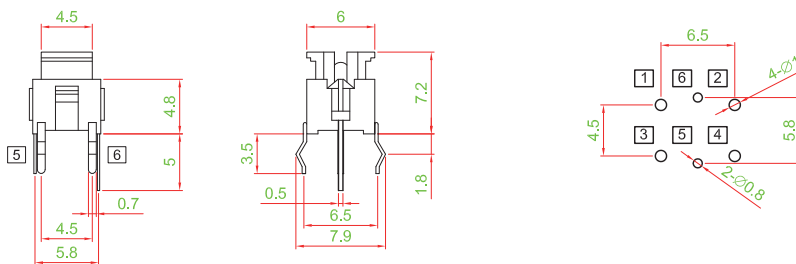
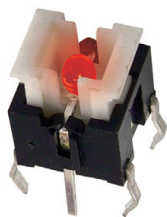
HOW TO ORDER



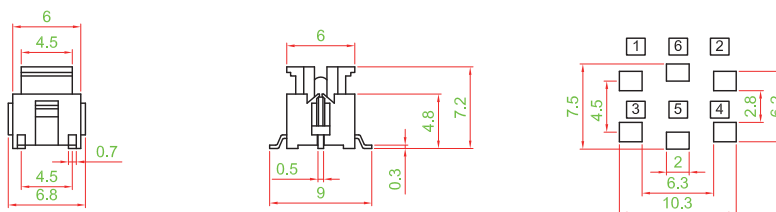
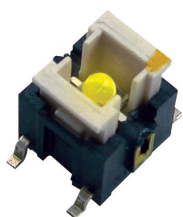


▶ **TERMINAL TYPE**

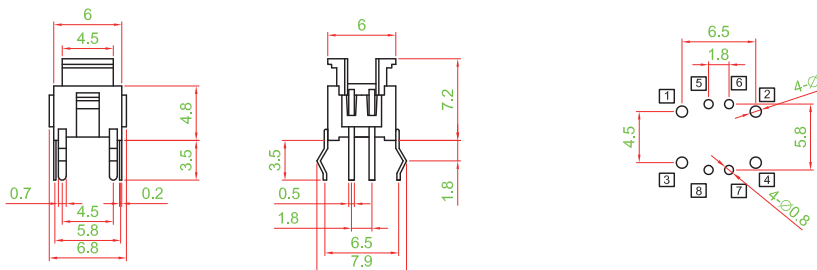
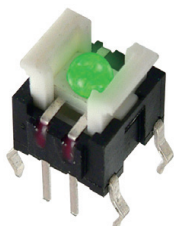
TC002-N11AXXX □□□□



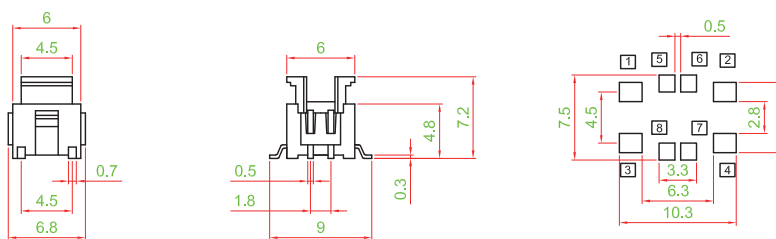
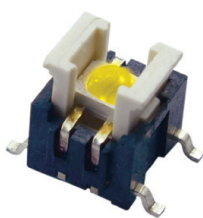
TC002-N11BXXX □□□□



TC002-N11AXXX - R G B

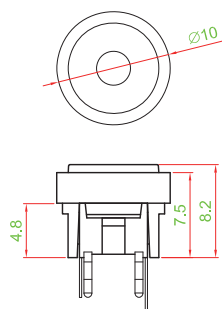


TC002-N11BXXX - R G B

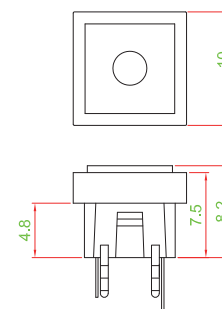


▶ **HOUSING TYPE (NOT FOR RGB LED)**

R TYPE



S TYPE



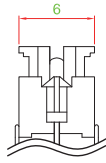
TACT SWITCH
PUSH BUTTON SWITCH
LED TOUCH SENSOR SWITCH
5 DIRECTION NAVIGATION SWITCH WITH LED
MEMBRANE SWITCH
LED LIGHT BAR
SLIDE SWITCH
ROTARY SWITCH
ROCKER SWITCH
DETECT SWITCH
ENCODER
INTERRUPTER
MINIATURE MICRO SWITCH
TELEPHONE HOOK SWITCH
DOOR SWITCH
MINI SIZE SOCKET
KNOB
CAP SYMBOL



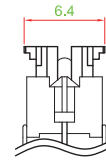
- TACT SWITCH
- PUSH BUTTON SWITCH
- LED TOUCH SENSOR SWITCH
- 5 DIRECTION NAVIGATION SWITCH WITH LED
- MEMBRANE SWITCH
- LED LIGHT BAR
- SLIDE SWITCH
- ROTARY SWITCH
- ROCKER SWITCH
- DETECT SWITCH
- ENCODER
- INTERRUPTER
- MINIATURE MICRO SWITCH
- TELEPHONE HOOK SWITCH
- DOOR SWITCH
- MINI SIZE SOCKET
- KNOB
- CAP SYMBOL

▶ ACTUATOR TYPE

X TYPE

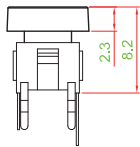
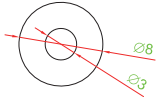


X1 TYPE

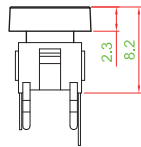
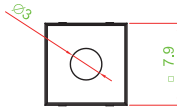


▶ CAP TYPE

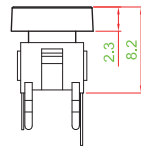
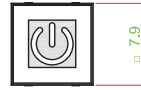
R TYPE



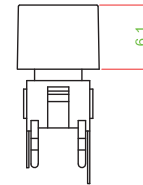
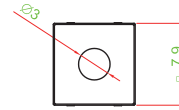
S TYPE



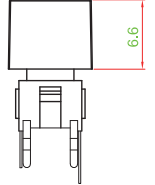
S4 TYPE



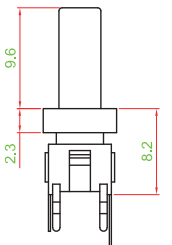
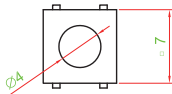
S5 TYPE



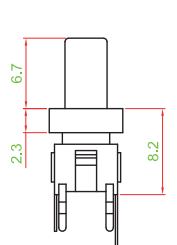
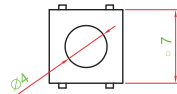
S5A TYPE



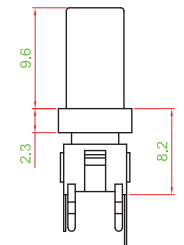
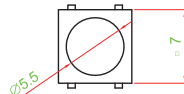
S1 TYPE



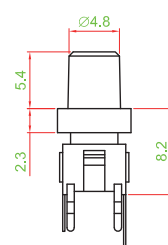
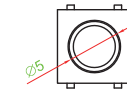
S1A TYPE



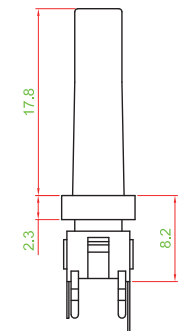
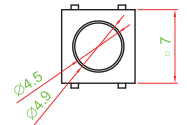
S2 TYPE



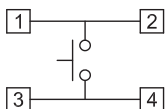
S3A TYPE



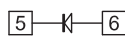
S3 TYPE



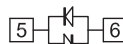
▶ CIRCUIT



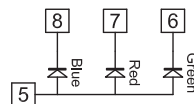
SINGLE COLOR



TWO COLOR



FULL COLOR



Mouser Electronics

Authorized Distributor

Click to View Pricing, Inventory, Delivery & Lifecycle Information:

Well Buying:

[TC001-N11AAAUGUG](#) [TC001-N11AAAURUR](#) [TC002-N11ARKKURUG](#) [TC002-N11ASKKURUG](#) [TC002-N11ASGGRRXX](#) [TC002-N11AS1XNT-RGB](#) [TC002-N11AS2XKT-RGB](#) [TC002-N11AS2XGT-RGB](#) [TC002-N11AS1XKT-RGB](#) [TC002-N11AS1XBT-RGB](#) [TC002-N11AS2XYT-RGB](#) [TC002-N11AS2XNT-RGB](#) [TC002-N11AS1XGT-RGB](#) [TC002-N11AS2XRT-RGB](#) [TC002-N11AS1XT-RGB](#) [TC002-N11AS1XYT-RGB](#) [TC002-N11AS2XBT-RGB](#) [TC002-N11AS1XRT-RGB](#) [TC002-N11AS2XT-RGB](#)