

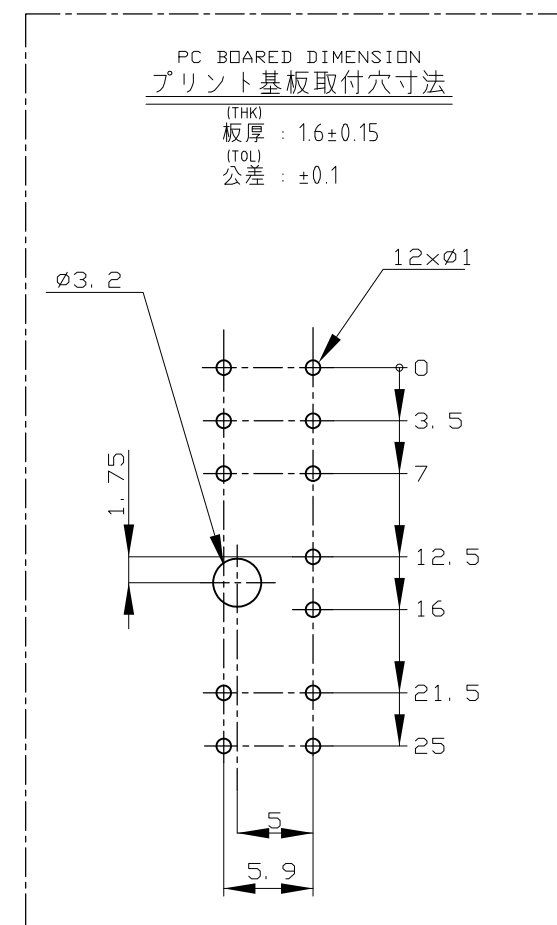
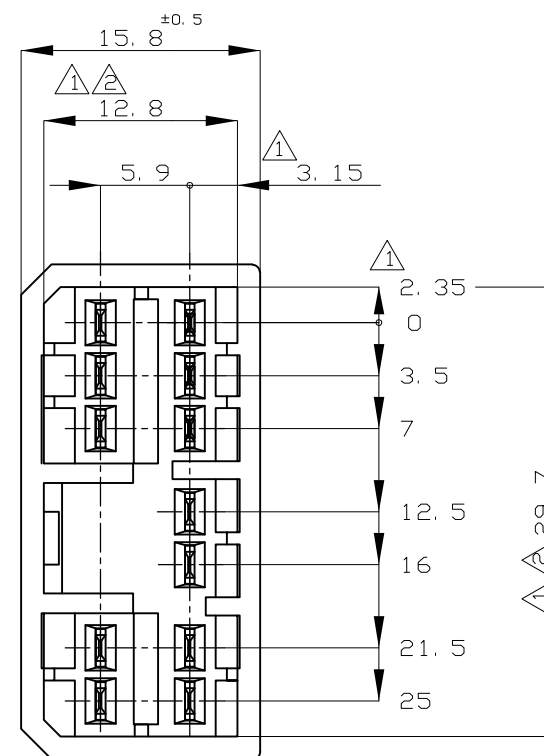
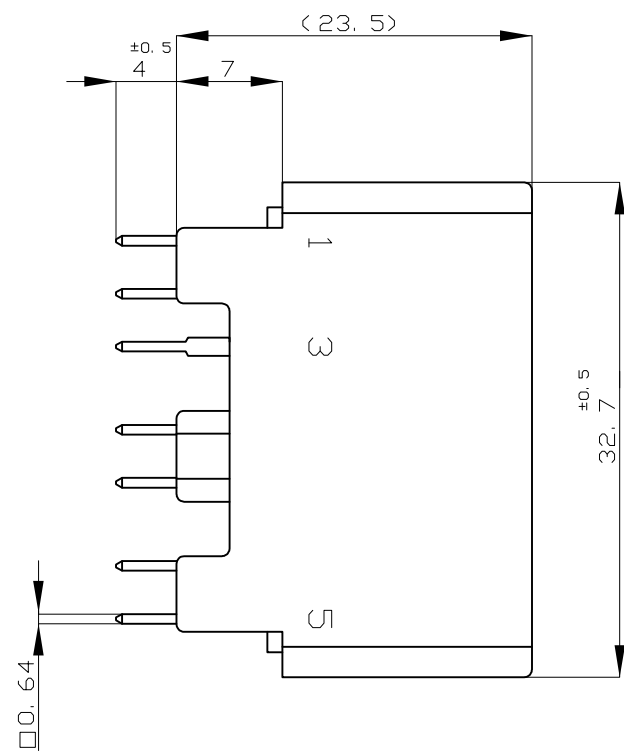
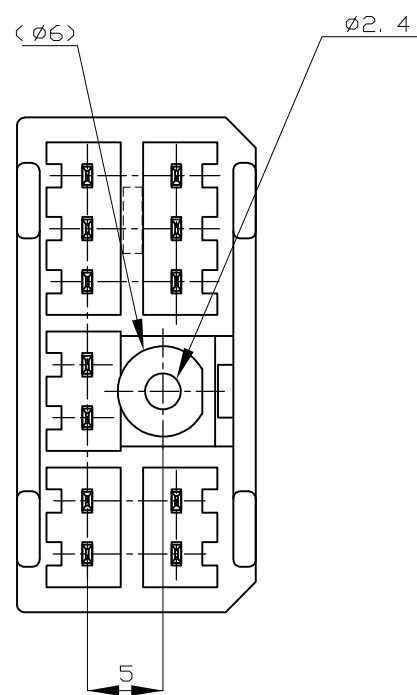
THIS DRAWING IS UNPUBLISHED.

RELEASED FOR PUBLICATION

© COPYRIGHT - By Tyco Electronics Japan G.K.

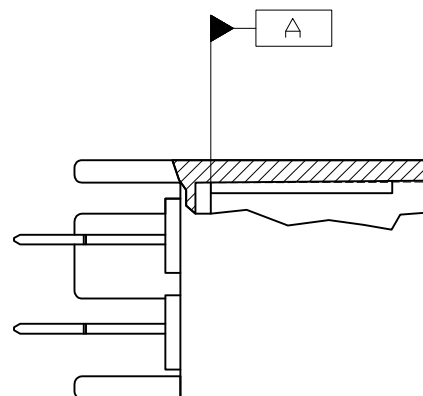
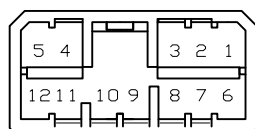
ALL RIGHTS RESERVED.

LOC	DIST	REVISIONS					
J	-	P	LTR	DESCRIPTION	DATE	DWN	APVD
			H4	REVISED	ECR-15-005789	15APR15	KF RK



NOTES :

- △ TO BE MEASURED BETWEEN [A] AND 2
- △ TO BE MATED WITH PLUG HSG SMOOTHLY
- 3 TO BE USE M3 TAPPING SCREW JIS B1115 OR 1122 (TYPE2 OR 4) BEFORE SOLDER (TIGHTENING TORQUE; 0.8N-m MAX)
- 4 APPLIED PLUG HSG P/N ; 173851
- △ CIRCUIT NUMBER



- 注 :
- △ [A] 面から2mmの範囲で測定
 - △ 相手ハウジングと所定の機能を満たして嵌合できること
 - 3. プリント基板への取付けは JIS-B1115 又は 1122, M3X6ナベ (2種又は4種) のタッピンネジで締付けた後ハンダ付けする (締付トルク; 0.8N-m以下)
 - 4. 嵌合相手ハウジング型番; 173851
 - △ 回路番号; 上図参照のこと

OBSOLETE	SELECTIVE TIN (MATTE)	SELECTIVE GOLD x 12	1~12	NATURAL 自然色	2-5174957-1	
	SELECTIVE-TIN	PRE-TIN x 12	-	NATURAL 自然色	3-174957-1	
OBSOLETE	TIN-LEAD	SELECTIVE GOLD x 12	1~12	NATURAL 自然色	2-174957-1	
	PRE-TIN x 12		-	NATURAL 自然色	1-174957-1	
	SELECTIVE TIN (MATTE)	SELECTIVE-TIN x 12 (BRIGHT)	-	BLACK 黒色	174957-3	
	SELECTIVE-TIN	PRE-TIN x 12	-	BLACK 黒色	174957-2	
SOLDERING SIDE 半田付け部		CONTACT SIDE 接触部側	△ GOLD PLATED CIRCUIT NO. 金めっき回路番号		COLOR 色	PART NUMBER 製品型番
CONTACT FINISH コントクト仕上						

THIS DRAWING IS A CONTROLLED DOCUMENT.

DIMENSIONS: 単位: 耗 mm	TOLERANCES UNLESS OTHERWISE SPECIFIED: 一般公差
	0 PLC ± -
	1 PLC ± -
	2 PLC ± -
	3 PLC ± -
	4 PLC ± -
ANGLES	± -
FINISH 仕上	SEE TABLE
MATERIAL 材料	HOUSING : PBT
	CONTACT : BRASS

GENERAL TOLERANCE	
0<* < 10	±0.2
10<* < 30	±0.25
30<* < 100	±0.3
ANGLES	±3°

DWN M.KADOSAKI 120CT05	STE TE Connectivity	
CHK T.SHINOHARA 120CT05		
APVD K.BETSUI 120CT05	NAME 名称	
PRODUCT SPEC 製品規格	.070 SRS MLC	
APPLICATION SPEC 取付適用規格	12Pos. CAP HSG (W-B(V-TYPE))	
WEIGHT	SIZE A3	CAGE CODE 00779
CUSTOMER DRAWING	DRAWING NO 番号 C-174957	RESTRICTED TO -
	SCALE 尺度 2:1	SHEET 1 OF 1
		REV H4

Mouser Electronics

Authorized Distributor

Click to View Pricing, Inventory, Delivery & Lifecycle Information:

[TE Connectivity:](#)

[1-174957-1](#)