

8

7

6

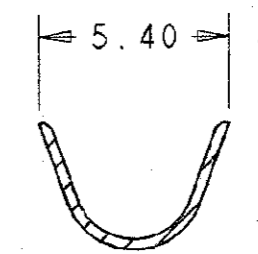
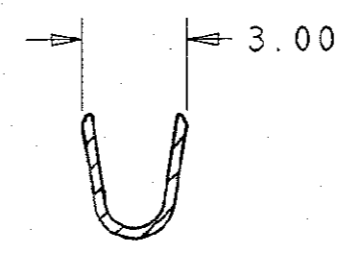
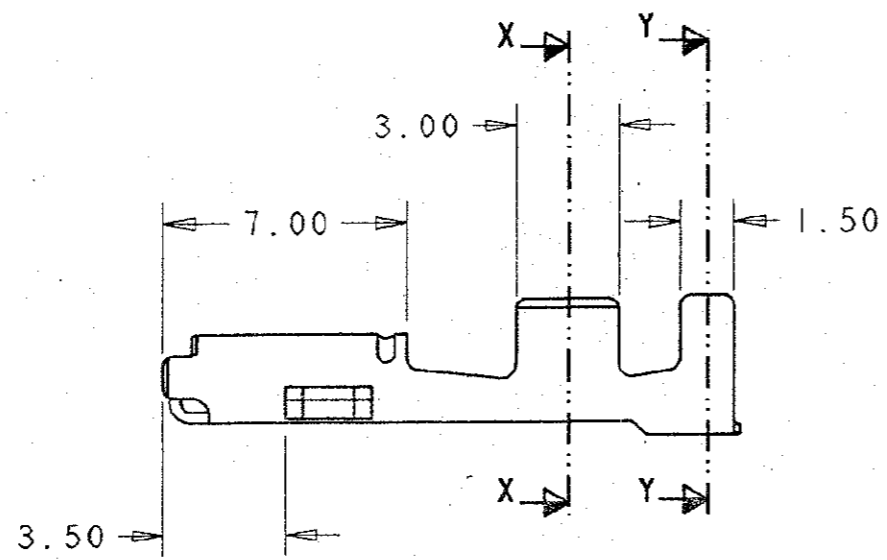
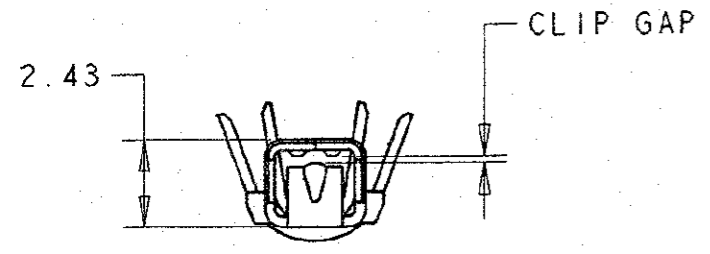
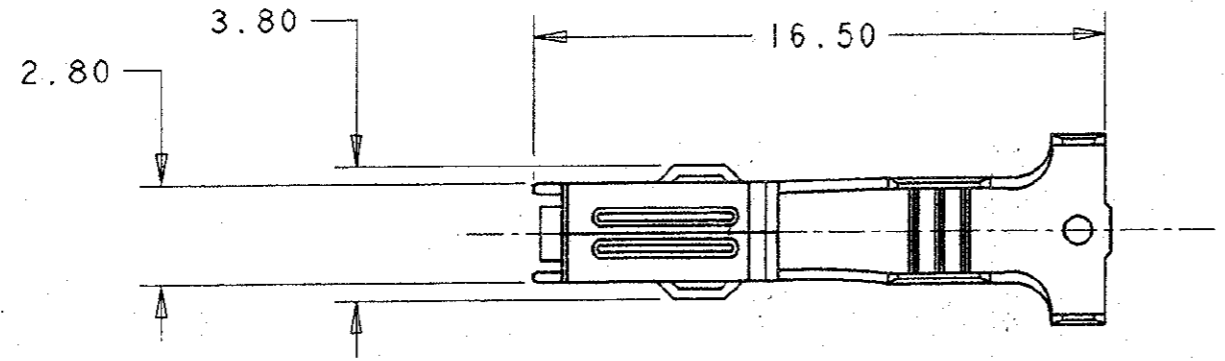
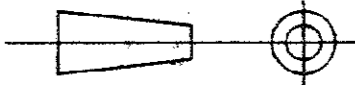
5

4

3


2

DO NOT SCALE DIMENSIONS IN MM.



WIRE RANGE: 0.75 TO 2.00 mm<sup>2</sup>.  
 FOR SEALED APPLICATIONS, SINGLE WIRES ONLY MUST BE USED.  
 FOR UNSEALED APPLICATIONS, SINGLE WIRES ARE SUITABLE FOR THE RANGE 0.75 TO 2.00 mm<sup>2</sup> OR DOUBLE WIRES 2 X 0.50 mm<sup>2</sup> ONLY.

INSULATION RANGE: SINGLE WIRES 1.65 TO 2.70 MM DIA. OR DOUBLE WIRES 2 X 1.6 MM DIA. ONLY. THIN WALLED CABLE TO BE USED.

PRE-TINNED		BRASS		345806-1	
FINISH		MATERIAL		PART NUMBER	
CUSTOMER DWG FOR REFERENCE ONLY			RELEASED FOR PUBLICATION 14 SEP 1990		
TOLERANCES UNLESS OTHERWISE STATED :		DR. R. S.		14.9.90	
DEC ± 0.5		CH. R. J. S.		APP. J. P.	
ANGLES ± 1°		 TE Connectivity			
NAME					
.070 RECEPTACLE ECONOSEAL 3					
A1	HMR	ECO-11-005294	13APR11	SCALE	LOC
REV	APPROVED	ECO	DATE	5 / 1	E
				SIZE	DWG. No.
				A 3	C345806
				REV	SHEET
				A1	1 / 1

# Mouser Electronics

Authorized Distributor

Click to View Pricing, Inventory, Delivery & Lifecycle Information:

[TE Connectivity:](#)

[345806-1](#)