

This document is the property of Amphenol Corporation and is delivered on the express condition that it is not to be disclosed, reproduced or used, in whole or in part, for manufacture or sale by anyone other than Amphenol Corporation without the express written consent of Amphenol Corporation. The marking on this product doesn't contain environmental hazardous materials and is RoHS compliant for use in applications for Sony DP Compliant or per directive 2011/65/EU for RoHS compliant.

**ORIGINAL**

SYM	ECN No.	REVISIONS	DATE	BY
A	NE-13133	RELEASE	08/09/2013	HANK HSU
B	NE-13177	MODIFIED LEAD-IN CHAMFER	11/07/2013	HANK HSU
C	NE-13204	HOUSING LATCH POINT RECOVERY	12/17/2013	HANK HSU

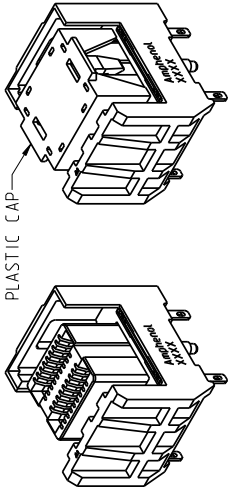
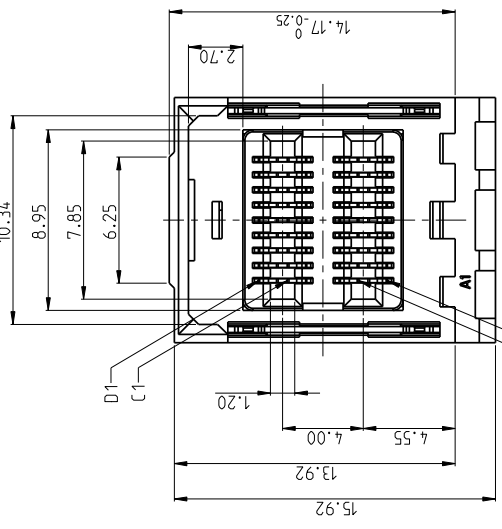
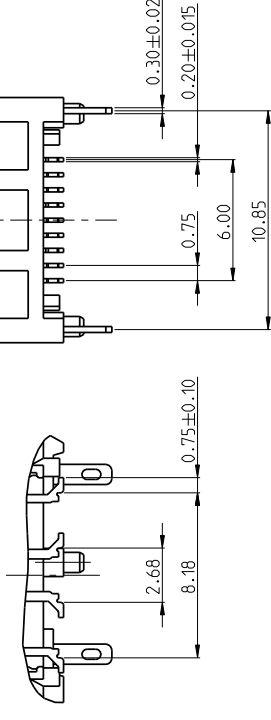
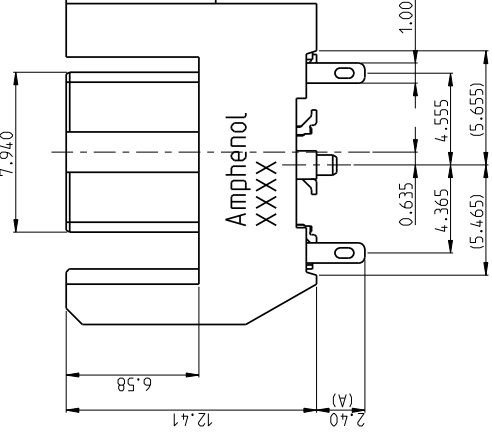
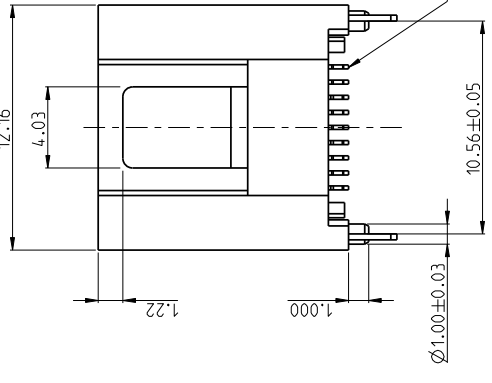
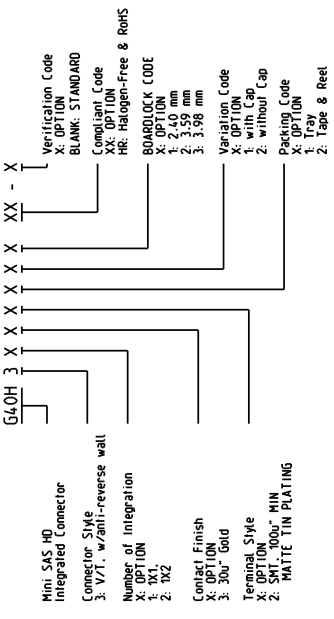


TABLE 1

DIM	A	APPLICABLE PCB THK
2.40	1.57~1.60	
3.59	2.36~2.79	
3.98	3.18	

**PART NUMBER SYSTEM**



TOLERANCE		DRAWN APPROVALS		TITLE	
X.	±0.30	DESIGNED	Hank Hsu	DATE	12/17/2013
X.X	±0.20	CHECKED	Sondra Sang	UNIT	mm
X.XX	±0.10	APPROVED	Hank Hsu	SCALE	NA
X.XXX	±2°	DWG TYPE	CUST DWG	SHEET	1 OF 3
ANGULAR ±2°		PROJECT CODE	1515	REV.	C
UNLESS OTHERWISE SPECIFIED		<p>Amphenol® Amphenol Corporation Amphenol Taiwan Corporation</p>			

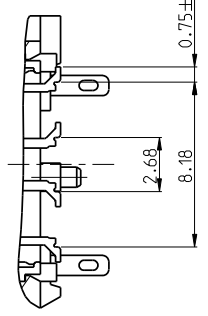
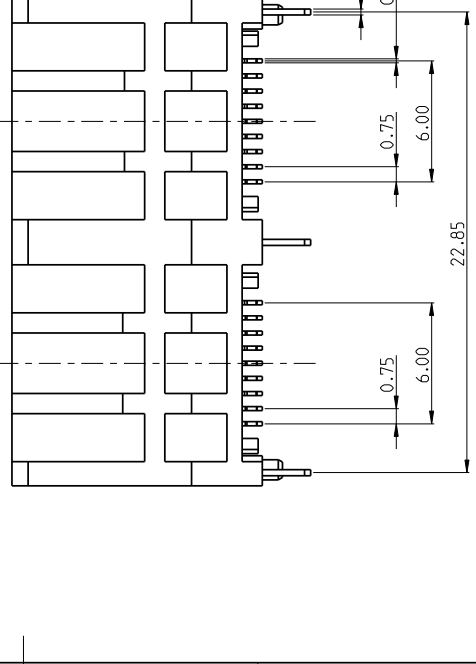
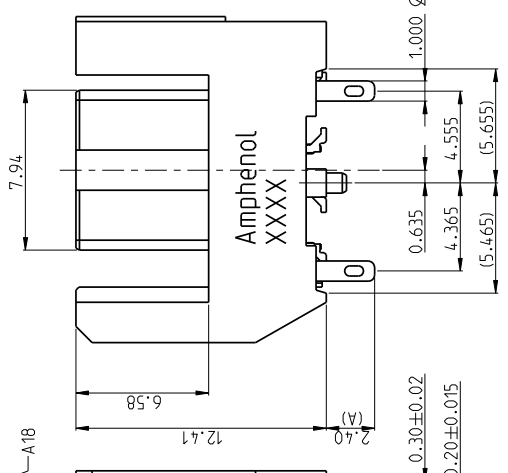
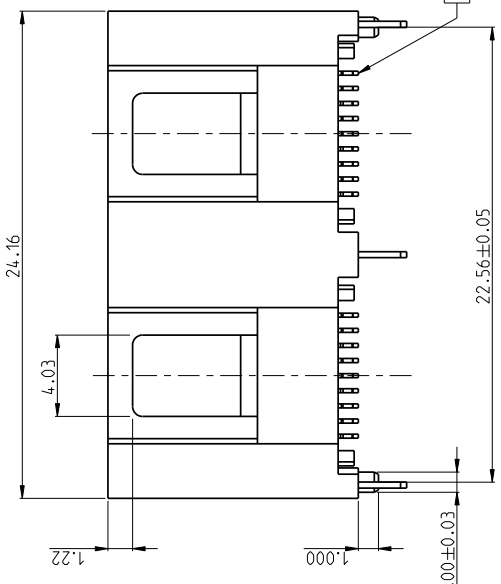
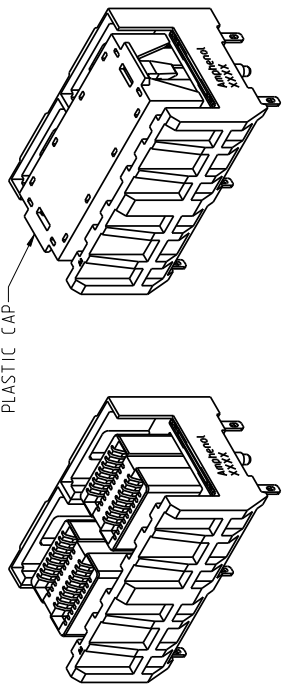
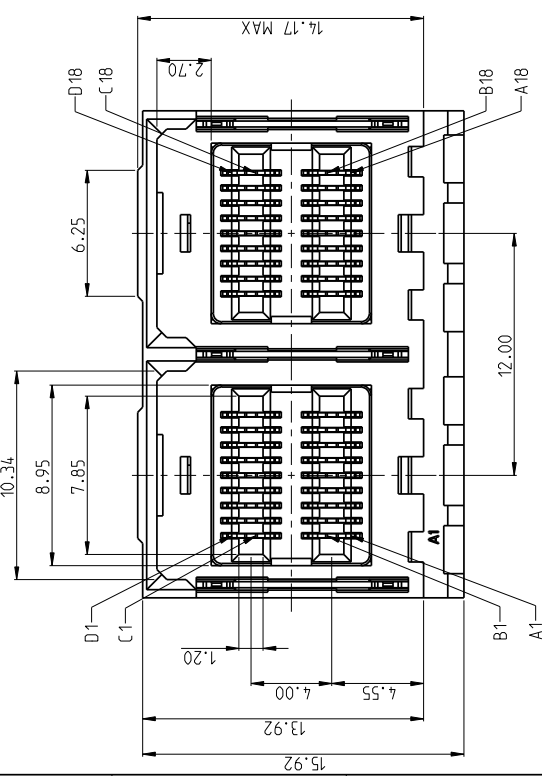
- NOTES:
- INSULATOR: HIGH TEMPERATURE THERMOPLASTIC UL94V-0, COLOR: BLACK
  - TERMINAL: COPPER ALLOY  
CONTACT AREA: OPTION  
TAIL AREA: OPTION
  - THIS PRODUCT DOESN'T CONTAIN ENVIRONMENTAL HAZARDOUS PER DIRECTIVE 2011/65/EU FOR ROHS AND PER IEC 61249-2-21 FOR HALOGEN-FREE COMPLIANT.

1 2 3 4 5 6 7 8

This document is the property of Amphenol Corporation and is delivered on the express condition that it is not to be disclosed, reproduced or used, in whole or in part, for manufacture or sale by anyone other than Amphenol Corporation without the express written consent of Amphenol Corporation. The marking on this product doesn't comply with environmental hazardous materials regulations (RoHS, REACH, SVHC, etc.) for Sony CP Compliant or per directive 2011/65/EU for RoHS compliant.

**ORIGINAL**

SYM	ECN No.	DESCRIPTION	DATE	BY
A	NE-13133	RELEASE	08/09/2013	HANK HSU
B	NE-13177	MODIFIED LEAD-IN CHAMFER	11/07/2013	HANK HSU
C	NE-13204	HOUSING LATCH POINT RECOVERY	12/17/2013	HANK HSU



TOLERANCE	DRAWN APPROVALS	DATE	TITLE
X.X ±0.30	DESIGNED Hank Hsu	12/17/2013	MINI SAS HD INTEGRATED CONNECTOR
X.XX ±0.20	CHECKED Sondra Sang	12/17/2013	0.75 PITCH, V/T, SMT TYPE
X.XXX ±0.10	APPROVED Hank Hsu	12/17/2013	
ANGULAR ±2°	DWG TYPE CUST DWG	PROJECT CODE 1515	
UNLESS OTHERWISE SPECIFIED			

UNIT	SCALE	SHEET	REV.
mm	NA	2 OF 3	C
SIZE			
A3			
PART No.	G40H3XXXXXHR		
DWG No.	G40H3XXXXXHR		

**Amphenol®**  
 Amphenol Corporation  
 Amphenol Taiwan Corporation

1 2 3 4 5 6 7 8

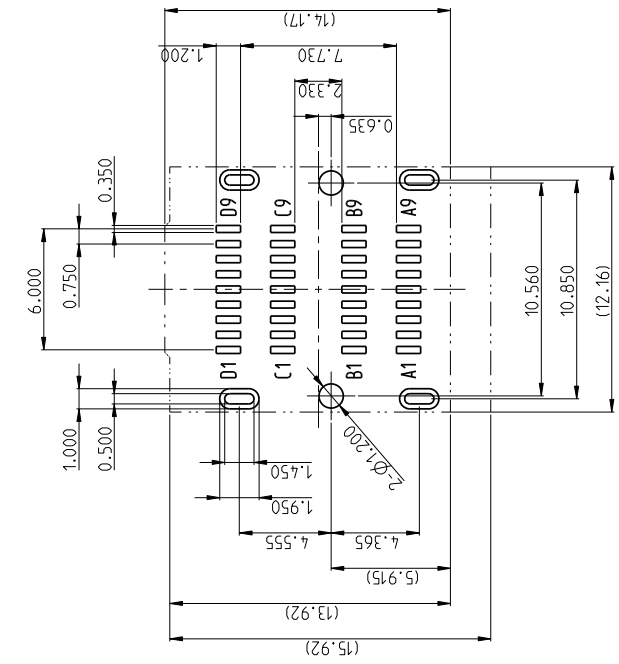
1 2 3 4 5 6 7 8

This document is the property of Amphenol Corporation and is delivered on the express condition that it is not to be disclosed, reproduced or used, in whole or in part, for manufacture or sale by anyone other than Amphenol Corporation without the express written consent. No right is granted to disclose or to use any information in this document.

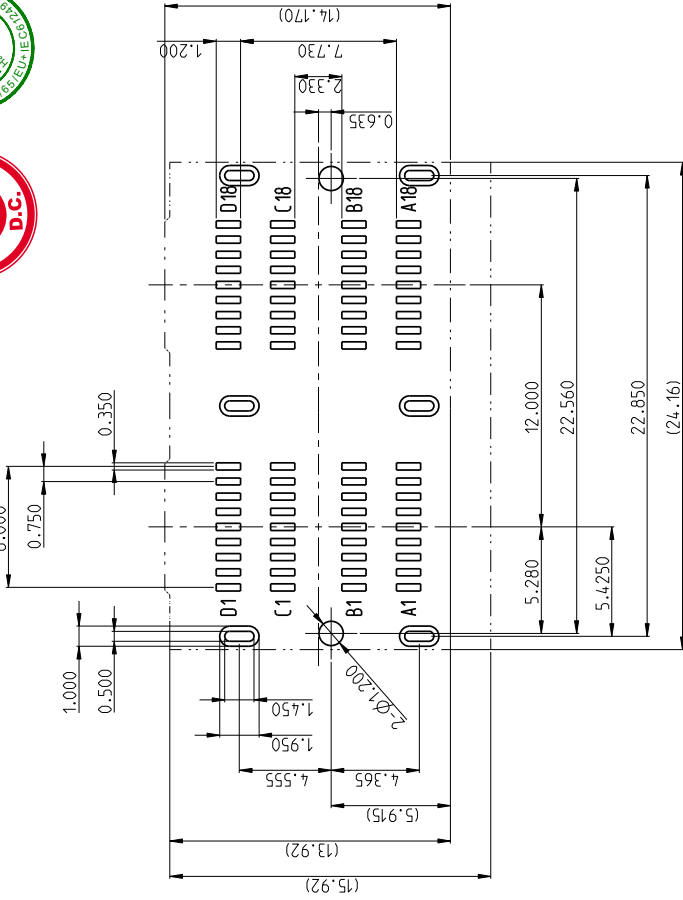
The marking on this product doesn't comply with environmental hazardous materials regulations (RoHS, REACH, SVHC) for Sony IP Compliant or per directive 2011/65/EU for RoHS compliant.

**ORIGINAL**

REVISIONS		DATE	BY
SYM	ECN No.	DESCRIPTION	
A	NE-13133	RELEASE	HANK HSU
B	NE-13177	MODIFIED LEAD-IN CHAMFER	HANK HSU
C	NE-13204	HOUSING LATCH POINT RECOVERY	HANK HSU



1X1 RECOMMENDED PCB LAYOUT  
(ALL TOLERANCES ARE ±0.05)



1X2 RECOMMENDED PCB LAYOUT  
(ALL TOLERANCES ARE ±0.05)

NOTES:

1. RECOMMENDED PCB HOLE Ø1.20 IS NPTH FOR ORIENTATION POST.
2. RECOMMENDED PCB ELLIPTICAL HOLE 0.5X1.45 IS PTH FOR BOARD-LOCK.
3. MINIMUM PCB THICKNESS: 1.57MM
4. PIN ASSIGNMENTS PLEASE REFER TO SERIAL ATTACHED SCSI-3 (SAS-3) STANDARD.

TOLERANCE	DRAWN	APPROVALS	DATE	TITLE
X.X X.XX X.XXX	DESIGNED	Hank Hsu	12/17/2013	MINI SAS HD INTEGRATED CONNECTOR 0.75 PITCH, V/T, SMT TYPE
X.XXX	CHECKED	Sondra Sang	12/17/2013	
ANGULAR ±2°	APPROVED	Hank Hsu	12/17/2013	
UNLESS OTHERWISE SPECIFIED	DWG TYPE	CUST DWG	PROJECT CODE	UNIT
			1515	MM
				SCALE
				NA
				SHEET
				3 OF 3
				SIZE
				A3
				PART No.
				G40H3XXXXXXHR
				DWG No.
				G40H3XXXXXXHR
				REV.
				C

**Amphenol®**  
Amphenol Corporation  
Amphenol Taiwan Corporation

A B C D E F L