

ROHS Compliant

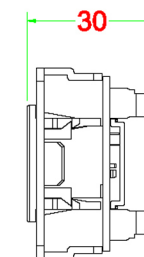
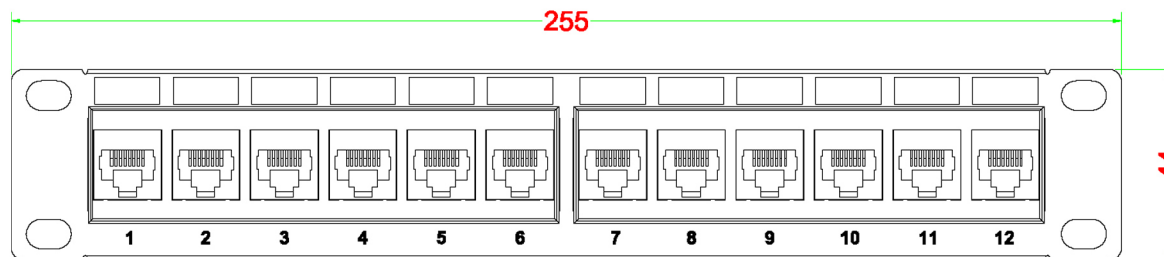
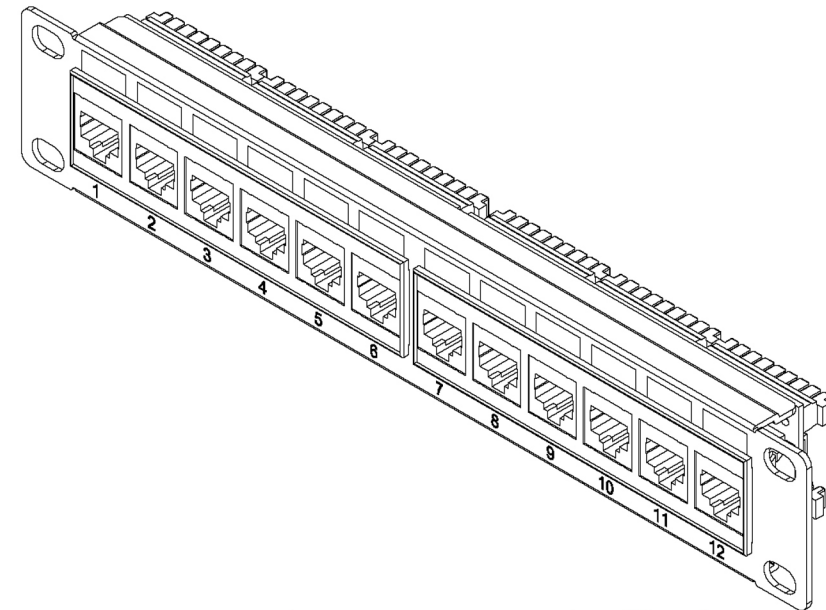
**Code: SF12ep****C6 PATCH PANEL UTP**

**Performance:**  
Meets C6 EIA/TIA 568B Standard.

**Materials:**  
Front Plate : Fireproof ABS UL-94V0  
Panel : Cold rolled steel (SPCC)  
Jack : 8P8C 50 $\mu$ "/1.27 $\mu$ m gold plated  
PCB : FR-4 / UL-94V0  
IDC Body : Fireproof ABS UL-94V0  
IDC Pin : Bronze & Tinned

**IDC Description :** For 22-26 AWG.  
For 110 or Krone punch-down Tool

**Electrical Specifications:**  
Insulation Resistance : 500 M $\Omega$  (min.)  
Contact Resistance : 20 m $\Omega$  (max.)  
Current Rating : 1.5 Amps .  
DC Resistance : 0.1 ohms (max.)  
Withstanding Voltage : 1000 VAC RMS @ 60Hz / 1 min.



**Mechanical Specifications:**  
IDC Punch Down Cycle : Over 250 Cycles (min.)  
Jack Insertion Cycle : Over 2000 Cycles (min.)

Operation Temperature : -40  $^{\circ}$ C ~ +70  $^{\circ}$ C