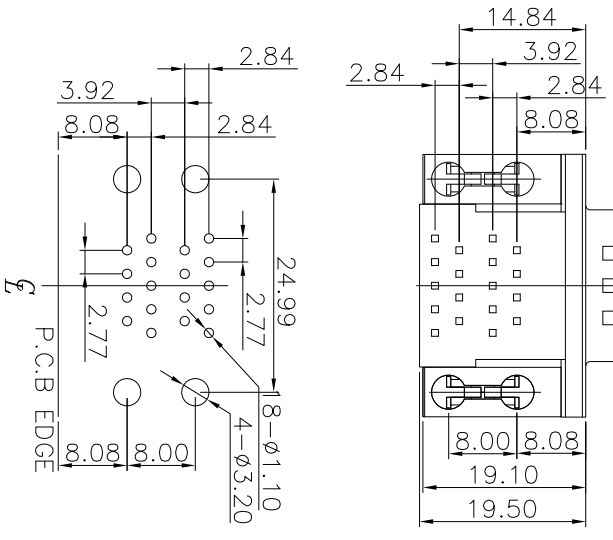
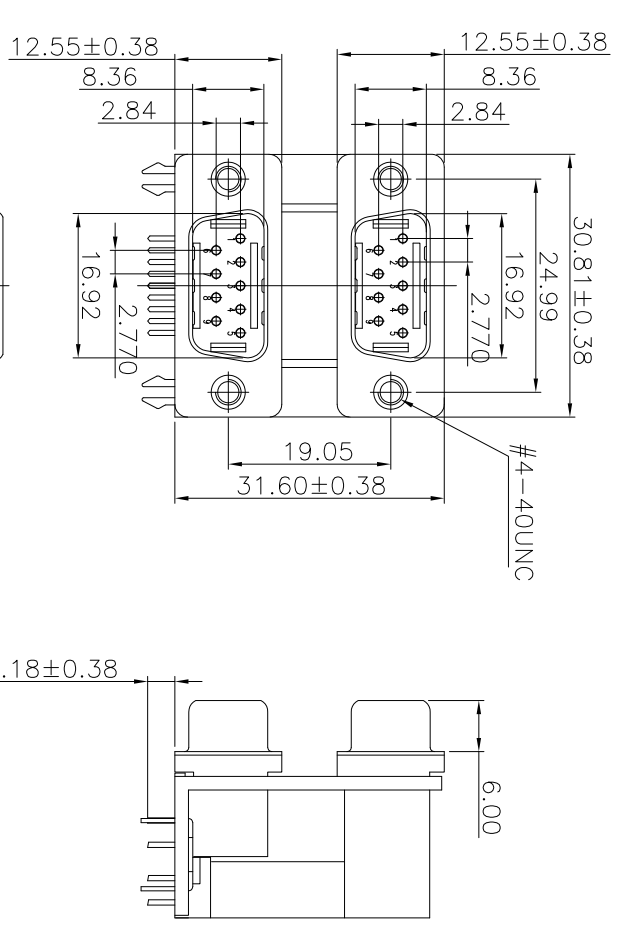


This document is the property of Amphenol Corporation and is delivered on a non-exclusive basis. It is to be used only for the specific application intended. Amphenol Corporation will not be held responsible for any damage or loss of data or information resulting from the use of this document without its prior consent, and that no right is granted to disclose or to use any information in this document.



RECOMMENDED P.C.B LAYOUT
TOLERANCE: ±0.05MM



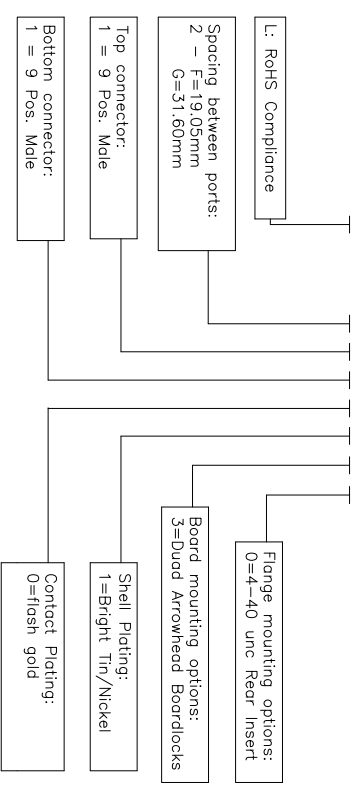
REVISIONS				
S/N	ECN	DESCRIPTION	DATE	APPROVED
1	HK--	First Release Drawing	2013/Apr/22	IP

D-SUB TECHNICAL DATA

- SHELL : Steel 100u" min tin over 50u" min nickel over 50u" copper
- BODY : Glass filled thermoplastic, PBT
Flame retardant to UL94 V-0 Color Black
- CONTACTS : Copper Alloy
Gold flash over 50u" nickel on mating area
100u" tin over 50u" nickel on solder area
- BRACKET : Zinc Alloy, nickel plated
- BOARDLOCK: Copper Alloy. Tin plated
- ELECTRICAL : Voltage rating 250 VAC (Rms) Max.
Current rating 3A
Withstanding Voltage >1000 VAC (Rms)
Insulation resistance >1000 M Ohms Max.
Contact resistance 25 mOhms max.

PRODUCT CODE

L17H2110130



UNLESS OTHERWISE SPECIFIED		APPROVAL		DATE	
TOLERANCES	U.S.	METRIC	DRAWN	DATE	REV
.X +/-	0.50	0.50	DATE	REV	
.XX +/-	0.30	0.30	DATE	REV	
.XXX +/-	0.20	0.20	DATE	REV	
FRACTIONS +/-			DATE	REV	
ANGLES +/-	5°		DATE	REV	

FOR MATERIALS AND FINISHES SEE NOTES REMOVE SHARP EDGES	ANGLE OF PROJECTION	SIZE DRAWING NO	REV
DIMENSIONS		L17H2110130	1
U-S	THIRD ANGLE	SCALE	NONE
METRIC		SHEET	1 OF 1

D-SUB DUAL PORT TYPE

Amphenol