



# General Purpose Fuses



DIN Fuse Accessories

## D-type (DIAZED)

## D Fuse System

2 – 200 A, 500 V, 690 V  
Line protection fuses gL-gG

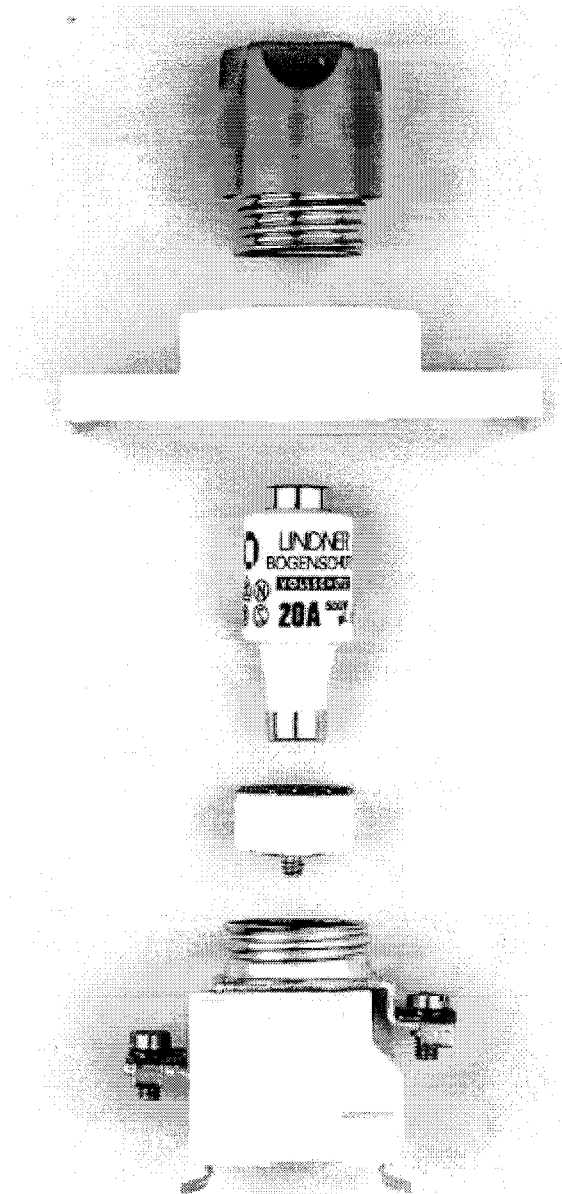
IEC 269-3-1  
DIN VDE 0636 Part 31  
DIN VDE 0636 Part 301

Dimensions are stipulated in the following regulations:

- DIN 49360 D Fuse-links
- DIN 49515 D Fuse-links
- DIN 49367 D Fuse-links, long design
- DIN 49514 D Screw caps
- DIN 49510 D Fuse bases
- DIN 49362 D Gauge rings
- DIN 49516 D Screw gauge pieces

### Structure of the D fuse system

Like the modern NEOZED system, the D-Fuse system consists of fuse base, gauge piece, fuse link and screw cap. It is designed for a rated voltage of 500V. Non-interchangeability of rated current is guaranteed from one current level to the other above 6 Amps. This is ensured by graduating the diameter of the bottom contact of the fuse-link along with corresponding fixed diameters for the gauge piece.





# General Purpose Fuses



DIN Fuse Accessories

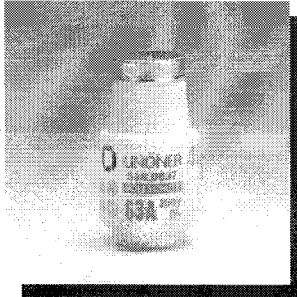
## D-type (DIAZED)



### D Fuse-links

2 -200 A gL-gG  
500 V

Characteristics page 143



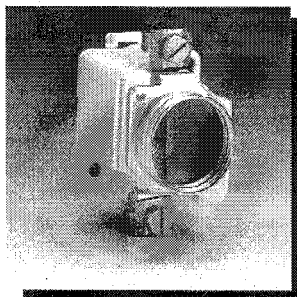
SIZE	RATED In CURRENT (A)	GAUGE COLOR	CATALOG NUMBER	REFERENCE NUMBER	PACK.
NDZ	2	pink	00594.002700	W212539	25
NDZ	4	brown	00594.004700	G213055	25
NDZ	6	green	00594.006700	C213557	25
NDZ	10	red	00594.010700	B214062	25
NDZ	16	grey	00594.016700	J214575	25
NDZ	20	blue	00594.020700	Q215087	25
NDZ	25	yellow	00594.025700	Q215593	25
D II	2	pink	00597.002700	Z219718	25
D II	4	brown	00597.004700	G222163	25
D II	6	green	00597.006700	B222917	25
D II	10/6 f	red	00597.610700	D213558	25
D II	10	red	00597.010700	K200707	25
D II	16	grey	00597.016700	K201765	25
D II	20	blue	00597.020700	A211508	25
D II	25	yellow	00597.025700	X212540	25

<sup>1</sup> with base contact stud for 6 A (without VDE test mark)

D III	35	black	00598.035700	C214063	25
D III	50	white	00598.050700	K214576	25
D III	63	copper	00598.063700	R215088	25
D IV	80	silver	00595.080700	V216600	10
D IV	100	red	00595.100700	M217637	10
D V	125	yellow	00596.125700	V218150	10
D V	160	copper	00596.160700	G218667	10
D V	200	blue	00596.200700	W219186	10

### D Fuse system ~ 690 V

In this design, the fuse base and gauge piece correspond to the 500 V standard for D III (E33). The extended fuse links D III and a special extended screw cap serve to complement the present system. D-type 690 V fuses are only available in size III.



### D Fuse-links

2 - 63 A gL - gG  
~ 690 V



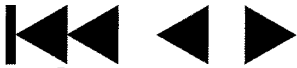
### D Screw-cap long design

~ 690 V

SIZE	RATED In CURRENT (A)	GAUGE COLOR	CATALOG NUMBER	REFERENCE NUMBER	PACK.
D III	2	pink	00603.002700	R215594	25
D III	4	brown	00603.004700	Z216107	25
D III	6	green	00603.006700	W216610	25
D III	10	red	00603.010700	H217127	25
D III	16	grey	00603.016700	N217638	25
D III	20	blue	00603.020700	W218151	25
D III	25	yellow	00603.025700	H218668	25
D III	35	black	00603.035700	X219187	25
D III	50	white	00603.050700	A219719	25
D III	63	copper	00603.063700	H222164	25

D III	63		00605.000000	L218671	25
-------	----	--	--------------	---------	----

Dimensions page 143

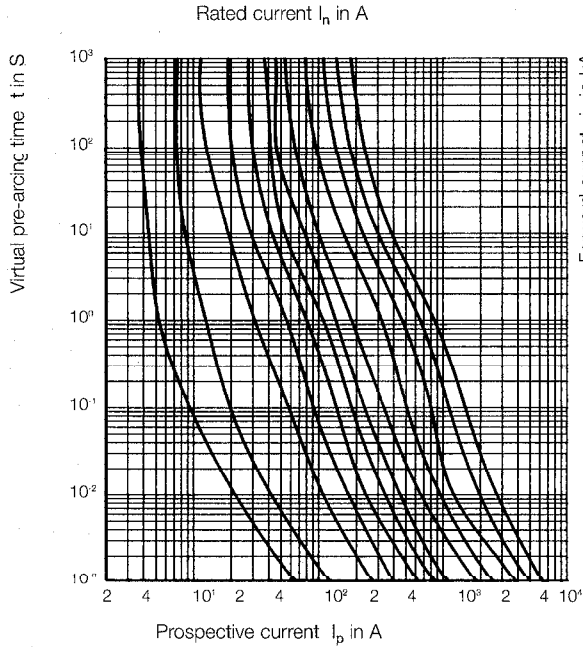


# General Purpose Fuses

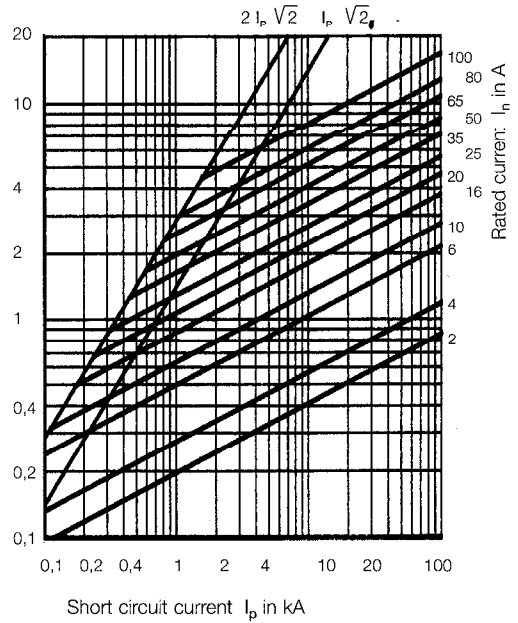


DIN Fuse Accessories

## D-type (DIAZED)

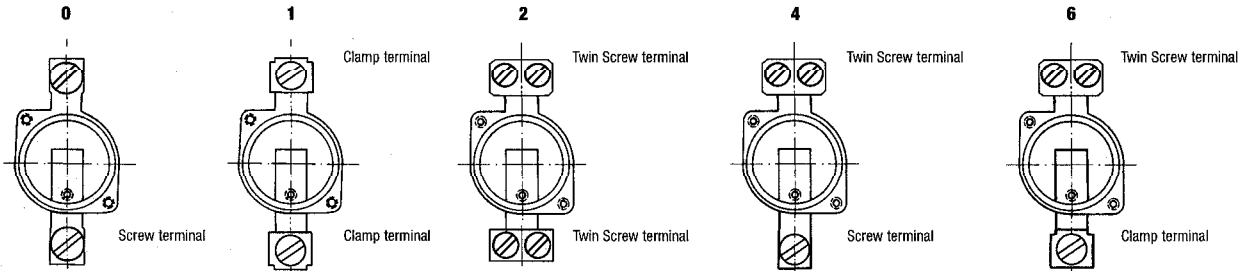


Time-current characteristics of D Fuses 2...100 A gL-gG



Forward current characteristics of NEOZED fuses 2...100 A gL-gG

### Terminal types



### Dimensions



#### D Fuse-links

Cat #	a <sub>1</sub>	b $\phi$
NDZ	30	12
DII	50	22
DIII	50	27
DIV	63	37
DV	65	45

#### D Screw caps

Cat. #	a	b
290.0002	42	34
691.0002	43	42
589.0002	34	27
690	42	34
691	43	42
592	52	60
2071	42	33
2072	43	40

#### D Covers

Cat. #	a	b	c
395.7	40	90	22
686.7	50	90	22
685.709	45	90	22
686.709	54	90	22
625.7	107	107	51
626.7	127	130	51

#### D Contact protection rings

Cat. #	a	b	c
181.9	17,5	44,5	40,5
182.9	19	54	50,5
81.9	18,5	43,5	39,8
72.9	18	53,5	50,5



# General Purpose Fuses

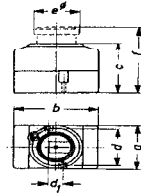


DIN Fuse Accessories

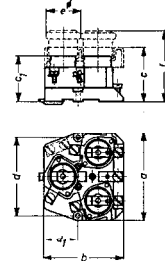
## D-type (DIAZED)

### Dimensions

Catalog number	Sizes in mm						
	a	b	c	d	d <sub>1</sub>	e∅	f
99	40	70	53	32	—	38	82
199	40	70	54	20	—	38	83
200	50	90	54	20	—	48	83

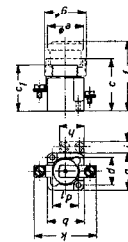


Catalog number	Sizes in mm							
	a	b	c	c <sub>1</sub>	d	d <sub>1</sub>	e∅	f
625	90	81	54.5	46	80	35	37	81
626	109	100	54.5	46	95	49.5	46.5	81
625*	107	107	51	—	—	—	—	—
626*	127	130	51	—	—	—	—	—



\* with cover cap

Catalog number	Sizes in mm											
	a	b	c	c <sub>1</sub>	d	d <sub>1</sub>	e∅	f	∅	h	i	k
685/81	38	40	60	46	29	27	38	82	43	—	—	60
686/72	46	44	57	48	35	33,5	48	84	52	—	—	73



Catalog number	Sizes in mm							
	a	b	c	d	e	f	g	g <sub>1</sub>
120	42	52	60	44	38	85	12	37
121	52	62	63	54	48	88	13	38

