

# Bocube

Enclosures, polycarbonate UL 94 V0, single-coloured



B 181306 PC-V0 7024

Order no.: 96014224

\* = Available on request.

## Characteristics

Colour of enclosure group

Graphite grey, similar to RAL 7024

Colour of enclosure group

Graphite grey

Protection class

IP 66, 68 - 1,2m (2 hours)

Enclosure Material

ABS or PC UL 94 V0 (material is suitable for outdoor use; f1-listing according to UL 746C)

PU seal, foamed; for details please see Technical Information

Scope of delivery

Lid and base, hinged quick-release catches

## Important!

To compensate for pressure when temperatures change and cause moisture in the enclosure, we recommend that you use a pressure compensation element.

» Additional information

## Technical documentation / Downloads

### Technical drawings

3D product data in STEP format: Registration necessary

Product drawing in PDF format: 96014224 B-181306-PC-V0-7024.pdf (246.3 KB)

### Product information

Bocube GB.pdf (1.9 MB)

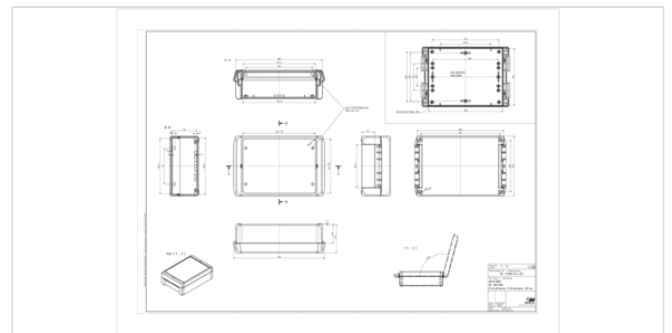
Highlights Bocube.pdf (3.8 MB)

## Dimensions

Dimensions

191 x 125 x 60 mm

Product drawing



Product drawing in DXF format: 96014224 B-181306-PC-V0-7024.dxf (3.8 MB)

Drawing for mechanical processing: 96014224 B-181306-PC-V0-7024-G.dxf (3.0 MB)

Milling contours are shown here as a DXF file. (Sub D, USB, HDMI, cable glands, ...)

## Works Test Certificates

688 WPZ-Bocube-PC-V0 DE.pdf (184.6 KB)

689 WPZ-Bocube-ABS DE.pdf (165.1 KB)

689 WPZ-Bocube-ABS EN.pdf (160.3 KB)

688 WPZ-Bocube-PC-V0 EN.pdf (179.1 KB)

## Matching accessories

---



### Hinged quick-release catches (Set), polycarbonate UL 94 V0 or ABS

96310200	B SC 13 PC-V0 3000	For B 1413.., B 1813.., B 2213..	Flame red
96310202	B SC 13 PC-V0 5002	For B 1413.., B 1813.., B 2213..	Ultramarine blue
96310209	B SC 13 PC-V0 6029	For B 1413.., B 1813.., B 2213..	Mint green
96310204	B SC 13 PC-V0 7024	For B 1413.., B 1813.., B 2213..	Graphite grey
96310205	B SC 13 PC-V0 7035	For B 1413.., B 1813.., B 2213..	Light grey
96310203	B SC 13 PC-V0 1023	For B 1413.., B 1813.., B 2213..	Traffic yellow



### Hand-operated hinged catch (set), polycarbonate UL 94 V0 or ABS

96910200	B SC HB 13 PC-V0 3000	For B 1413.., B 1813.., B 2213..	Flame red
96910202	B SC HB 13 PC-V0 5002	For B 1413.., B 1813.., B 2213..	Ultramarine blue
96910209	B SC HB 13 PC-V0 6029	For B 1413.., B 1813.., B 2213..	Mint green
96910204*	B SC HB 13 PC-V0 7024	For B 1413.., B 1813.., B 2213..	Graphite grey
*			
96930205*	B SC HB 13 ABS 7035	For B 1413.., B 1813.., B 2213..	Light grey
*			
96910205*	B SC HB 13 PC-V0 7035	For B 1413.., B 1813.., B 2213..	Light grey
*			
96910203	B SC HB 13 PC-V0 1023	For B 1413.., B 1813.., B 2213..	Traffic yellow



### Wall brackets

96510005	B WL 7035	For B 08... - B 26...	Light grey
96510004	B WL 7024	For B 08... - B 26...	Graphite grey



### Mounting panels, laminated paper, 2 mm

96604200	B M 1813	For B 1813..	
----------	----------	--------------	--



### Front panels, 2 mm, natural-coloured anodised aluminium

96704200	B FP 1813	For B 1813.., front panel thickness 2.0 mm	
----------	-----------	--	--



#### Sets of screws

96300000	B SHR	D (for optional screwing of enclosures B 0808 - 2617)
96600010	B M-SHR	C (for fixing mounting panels B M 1008-2736)
96700000	B FP-SHR	A (for fixing front panels)



#### Blanking plugs to determine the hinge side

96410000	B VS 3000	Flame red
96410005	B VS 7035	Light grey
96410004	B VS 7024	Graphite grey



#### DIN rail acc. to DIN EN 60715 TH 15

22151501	TS 15	For EM/ET 220, EM/ET 229-231, EM/ET 238, B 1808.., B 1813..
----------	-------	---



#### DIN rail acc. to DIN EN 60715 G 32

22321501	TS 32	For EM/ET 220, EM/ET 229-231, EM/ET 238, B 1808.., B 1813..
----------	-------	---



#### DIN rail acc. to DIN EN 60715 TH 35

22351501	TS 35	For EM/ET 220, EM/ET 229-231, EM/ET 238, B 1808.., B 1813..
----------	-------	---



#### Pressure compensation membrane DAE

52011000	DAE-D11	Self-adhesive membrane $\varnothing$ 11 mm
----------	---------	--