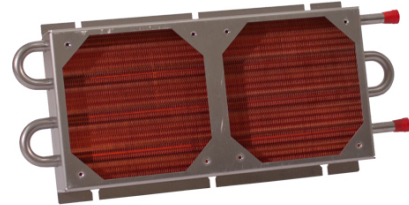




**STAINLESS STEEL TUBE-FIN HEAT EXCHANGERS  
ASPEN SERIES**

**PRODUCT DESCRIPTION**

Stainless steel tube-fin heat exchangers are ideal for applications where deionized water or corrosive fluids are used and a high performing heat exchanger is required. When a slightly lower performance/size ratio is acceptable, the Aspen offers better value - 80% of the performance of the 4000 Series at approximately 50% of the cost. The Aspen also has lower air and liquid side pressure drops than the 4000 Series. The stainless steel Aspen heat exchanger combines low price and low pressure drop with excellent heat transfer and superior fluid integrity.



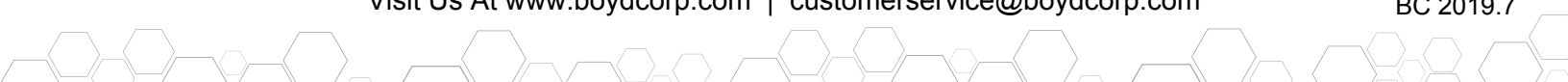
**ASPEN SERIES TECHNICAL SPECIFICATIONS**

	AS04-05G01	AS04-10G01	AS06-08G01	AS06-16G01	AS08-10G01	AS08-20G01	
<b>Fluid Path</b>	Stainless Steel						
<b>Fin Material</b>	Copper						
<b>Dry Weight</b>	kg (lb)	0.6 (1.4)	1.2 (2.7)	1.5 (3.3)	2.9 (6.3)	2.4 (5.3)	4.6 (10.1)
<b>Fluid Volume</b>	ml (in <sup>3</sup> )	45.9 (2.8)	75.4 (4.6)	91.8 (5.6)	162.2 (9.9)	145.8 (8.9)	262.2 (16.0)
<b>Max Operating Temperature</b>	200° (400°F)						
<b>Pressure Tested</b>	10.3 bar (150 psi)						
<b>Fitting</b>	SB: Straight Fitting						
<b>Fan Plate</b>	Included						
<b>Fan Kit (Optional)</b>	115V or 230V						
<b># of Fans in Kit</b>	1	2	1	2	1	2	

**ASPEN SERIES FEATURES**

- Heavy-walled, seamless stainless steel tubes are expanded into copper fin with an extruded full collar. The copper fin and the excellent metal-to-metal contact between the tube and the fin collar ensure optimum thermal performance.
- All the wetted surfaces are 316L stainless steel, so they are ideal for use with high purity and/or corrosive coolants such as deionized water.
- The welded stainless steel frame and fan plate offer durability and strength. Heat exchangers are 100% leak tested to 150 psi (10.3 bar). The Aspen has 0.020" (0.5 mm) wall tubing
- The integrated fan plate acts as a plenum to ensure uniform air-flow distribution through the core, thus maximizing performance. It also enables easy fan installation.
- With our Aspen Series, our proprietary manufacturing process expands the tubes into the copper fin without the use of oils and our liquid return design eliminates potential particle trapping sites, which can contaminate cooling fluid. Argon-purged welded joints further ensure cleanliness.

**NOTICE:** This information is being provided for reference purposes only. Boyd Corporation and its affiliates reserve the right to modify or update this information from time-to-time without notice. No representation is made as to the accuracy of and no express or implied warranties are provided for the information or products contained in this data sheet, and no liability shall be assumed for the application or use thereof. For additional information, please contact customerservice@boydcorp.com. © 2019 Boyd Corporation All Rights Reserved





**STAINLESS STEEL TUBE-FIN HEAT EXCHANGERS  
4000 SERIES**

**PRODUCT DESCRIPTION**

The 4000 Series heat exchanger is our highest performing stainless steel tubed heat exchanger. It is ideal for applications where deionized water or corrosive fluids are used, and a high efficiency, compact unit is required. When high performance in a small envelope is required, the 4000 Series is the best option.



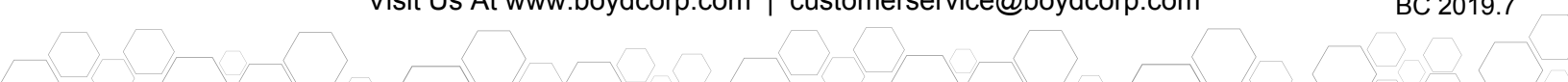
**4000 SERIES TECHNICAL SPECIFICATIONS**

	4105G1	4110G10	4120G10	4210G10	4220G10	4310G10	4320G10
<b>Fluid Path</b>	Stainless Steel						
<b>Fin Material</b>	Copper						
<b>Dry Weight</b> kg (lb)	0.7 (1.5)	0.9 (2.0)	1.6 (3.5)	2.3 (5.0)	3.9 (8.5)	3.9 (8.5)	6.4 (14.0)
<b>Fluid Volume</b> ml (in <sup>3</sup> )	50 (3)	131 (8)	205 (12.5)	288 (17.5)	500 (30.5)	483 (29.5)	844 (51.5)
<b>Max Operating Temperature</b>	200° (400°F)						
<b>Pressure Tested</b>	10.3 bar (150 psi)						
<b>Fitting</b>	SB: Straight Fitting						
<b>Fan Plate</b>	Included						
<b>Fan Kit (Optional)</b>	115V or 230V						
<b># of Fans in Kit</b>	1	1	2	1	2	1	2

**4000 SERIES FEATURES**

- Heavy-walled, seamless stainless steel tubes are expanded into copper fin with an extruded full collar. The copper fin and the excellent metal-to-metal contact between the tube and the fin collar ensure optimum thermal performance.
- All the wetted surfaces are 316L stainless steel, so they are ideal for use with high purity and/or corrosive coolants such as deionized water.
- The welded stainless steel frame and fan plate offer durability and strength. Heat exchangers are 100% leak tested to 150 psi (10.3 bar). The 4000 Series has 0.028" (0.7 mm) wall tubing
- The integrated fan plate acts as a plenum to ensure uniform air-flow distribution through the core, thus maximizing performance. It also enables easy fan installation.
- Argon-purged welded joints further ensure cleanliness.

**NOTICE:** This information is being provided for reference purposes only. Boyd Corporation and its affiliates reserve the right to modify or update this information from time-to-time without notice. No representation is made as to the accuracy of and no express or implied warranties are provided for the information or products contained in this data sheet, and no liability shall be assumed for the application or use thereof. For additional information, please contact customerservice@boydcorp.com. © 2019 Boyd Corporation All Rights Reserved



# Mouser Electronics

Authorized Distributor

Click to View Pricing, Inventory, Delivery & Lifecycle Information:

## [Aavid:](#)

[AS06-16G01SB-G9](#) [AS08-10G01SB-M9](#) [AS08-20G01SB](#) [AS08-20G01SB-M9](#) [4320G10SB-M9](#) [AS04-05G01SB](#)  
[AS04-05G01SB-D9](#) [AS04-10G01SB-D9](#) [AS06-08G01SB-F9](#) [AS06-16G01SB-F9](#) [4210G10SB-F9](#) [4210G10SB-G9](#)  
[4220G10SB](#) [4220G10SB-F9](#) [4220G10SB-G9](#) [4310G10SB-M9](#) [4105G1SB-D9](#) [4110G10SB](#) [4110G10SB-D9](#)  
[4120G10SB](#) [4120G10SB-D9](#)