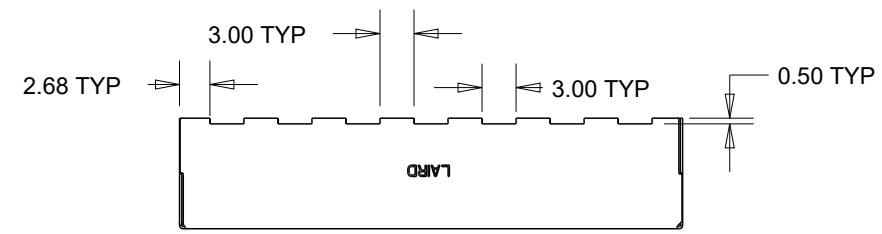
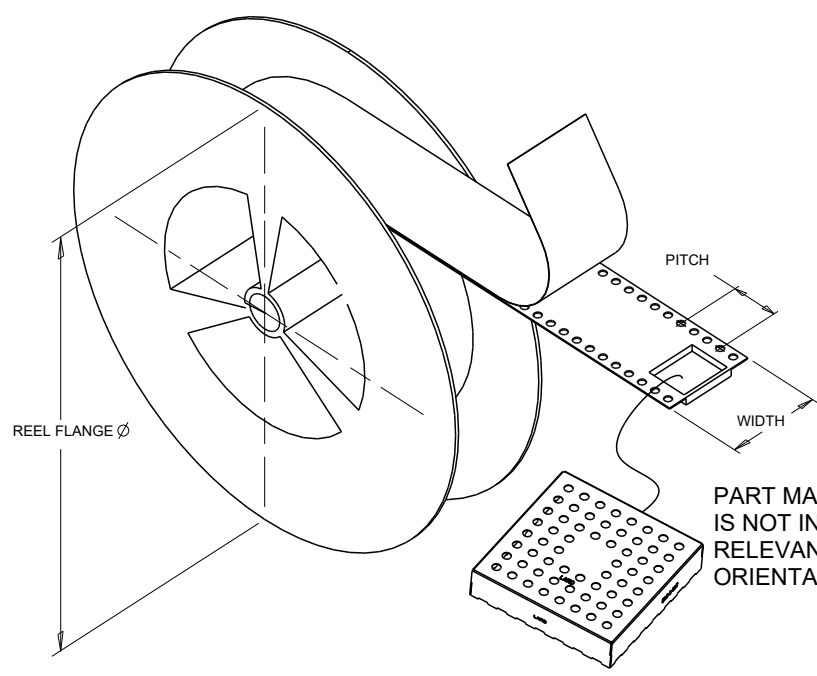
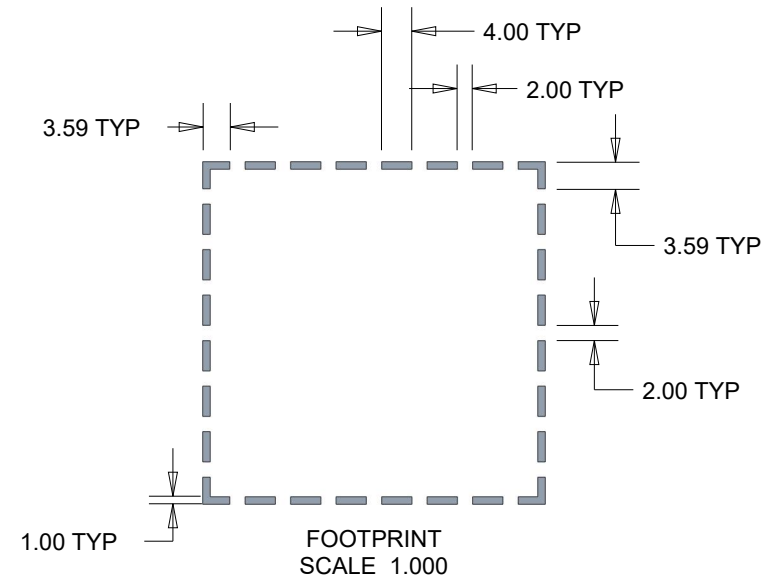
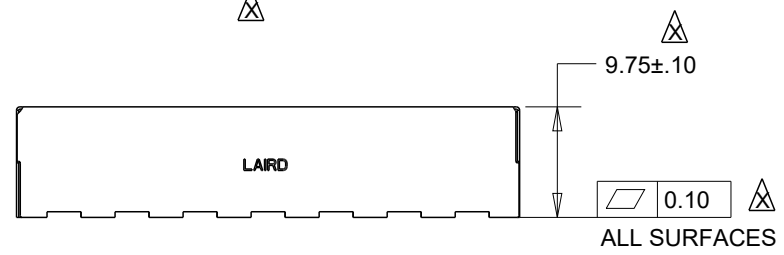
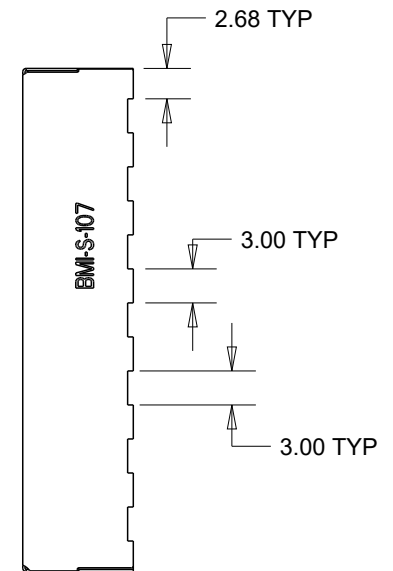
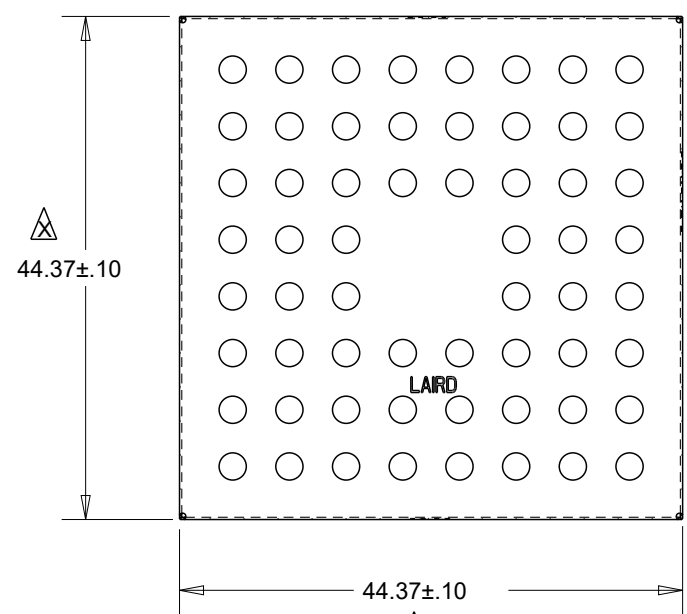
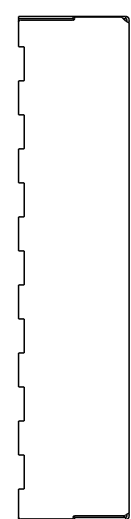


FUNCTION	PART NUMBER	MATERIAL / FINISH	PACKAGING			
			TAPE AND REEL			
FENCE	BMI-S-107	.20MM 1008/1010 PRE-PLATED COLD ROLLED STEEL 1/2 HARD 1.25-5.00 MICRONS 100% MATTE TIN	REEL DIAMETER	TAPE WIDTH	PITCH	QUANTITY
			381MM	56MM	56MM	120



- NOTES:
1. OTHER MATERIAL OPTIONS MAY BE AVAILABLE, CONSULT SALES.
 2. OTHER PACKAGING OPTIONS MAY BE AVAILABLE, CONSULT SALES.



PART MARKING ON SIDES IS NOT INTENDED TO BE RELEVANT TO PART ORIENTATION IN CARRIER TAPE.

CRITICAL DIMENSIONS ARE DESIGNATED BY

		PART DESCRIPTION:		PART NUMBER:	
		BOARD LEVEL SHIELD		BMI-S-107-SALES	
3RD ANGLE PROJECTION		CUSTOMER:		MODELED BY:	
DESIGNED IN PRO/ENGINEER		LAIRD CATALOG		TW	
SCALE: 1.500		PROGRAM NAME:		DATE: 05/08/12	
SHEET 1 OF 1		STANDARDS		REV: X	
SIZE: B		CUSTOMER PART NUMBER:		DATE: XX/XX/XX	
		N/A		APPROVED BY: X	
<p>INFORMATION CONTAINED IN THIS DOCUMENT IS CONFIDENTIAL AND PROPRIETARY TO LAIRD TECHNOLOGIES. IT MAY NOT BE DISCLOSED TO ANYONE WITHOUT WRITTEN AUTHORIZATION FROM LAIRD TECHNOLOGIES.</p>					
				SALES	