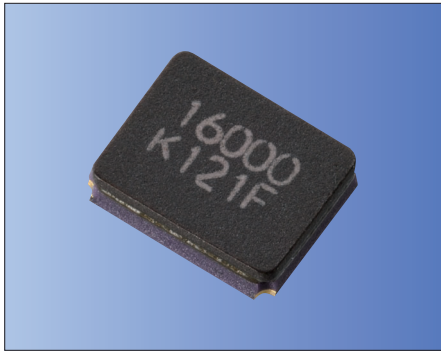




3.2×2.5mm for Automotive



AEC-Q200 RoHS Compliant

Features

- Crystal unit for automotive electronics
- Small and low profile (3.2×2.5×0.80mm)
- Ceramic package
- Reflow compatible

Applications

- ECU
- High-Speed Automotive Network

How to Order

CX3225CA 16000 D0 P S V CC
① ② ③ ④ ⑤ ⑥ ⑦

①Series	②Frequency
③Load Capacitance	④Frequency Tolerance
D0	P
8 pF	±50×10 ⁻⁶
⑤Operating Temp. Range	⑥Frequency Temp. Stability
SV	P
-40 to +125°C	±150×10 ⁻⁶
⑦Individual Specification (STD Standard is "CC").	

Packaging (Tape & Reel 3000 pcs./ reel)

Specifications

Item	Symbol	Specification	Unit	Remarks
Frequency Range	f _{nom}	12000 to 54000	kHz	
Overtone Order	OT	Fundamental	—	
Load Capacitance	CL	8	pF	Please contact us for other CL requirements.
Frequency Tolerance	f _{tol}	±50	×10 ⁻⁶	25°C±3°C
Motional Series Resistance	R1	Table 1	ohm	
Drive Level	DL	Table 2	μW	
Operating Temp. Range	T _{use}	-40 to +125	°C	
Storage Temp. Range	T _{stg}	-40 to +150	°C	
Frequency Temp. Characteristics	f _{tem}	±150	×10 ⁻⁶	Freq. deviation from the value at 25°C

Please contact us for other specifications.

Table 1 Motional Series Resistance

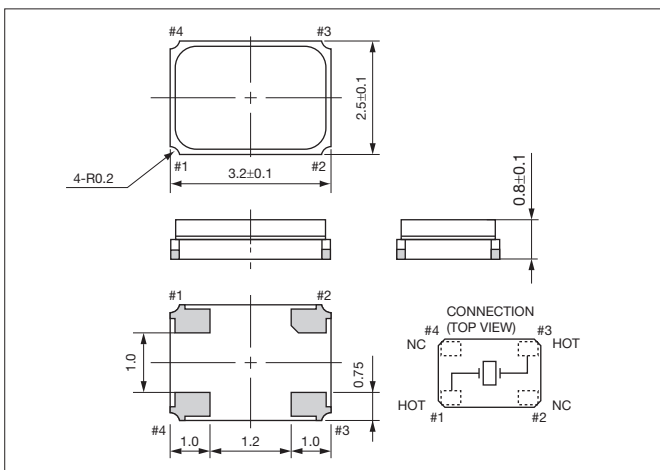
Frequency Range	Motional Series Resistance
12000 ≤ f _{nom} < 13560kHz	200 Ω max.
13560 ≤ f _{nom} < 16000kHz	120 Ω max.
16000 ≤ f _{nom} ≤ 54000kHz	100 Ω max.

Table 2 Level of Drive

Frequency Range	Level of Drive
12000 ≤ f _{nom} ≤ 54000kHz	10μW (200μW max.)

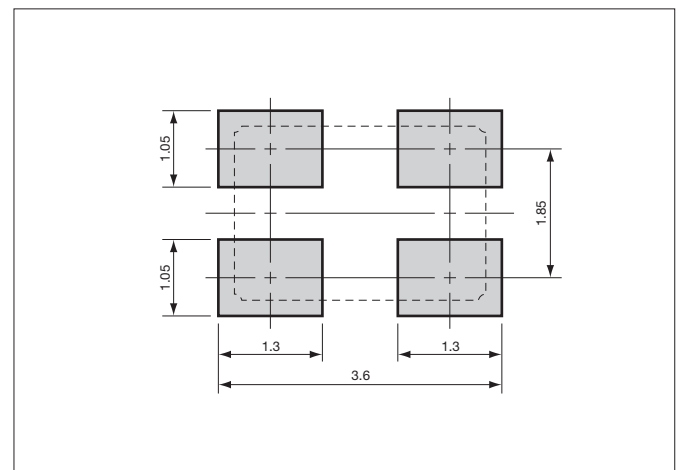
Dimensions

(Unit: mm)



Recommended Land Pattern

(Unit: mm)



Mouser Electronics

Authorized Distributor

Click to View Pricing, Inventory, Delivery & Lifecycle Information:

KYOCERA AVX:

[CX3225CA20000D0PSWZ1](#) [CX3225CA16000H0HSSZ1](#) [CX3225CA25000D0HSSZ1](#) [CX3225CA20000D0HSSCC](#)
[CX3225CA09843D0HSSTT](#) [CX3225CA10000D0HSSTT](#) [CX3225CA28636D0HSSCC](#) [CX3225CA24000D0HSSCC](#)
[CX3225CA25000D0HSSCC](#) [CX3225CA12000D0HSSCC](#) [CX3225CA40000D0HSSCC](#) [CX3225CA16000D0HSSCC](#)
[CX3225CA27000D0HSSCC](#) [CX3225CA32000D0HSSCC](#) [CX3225CA12000P0HSTC1](#) [CX3225CA25000P0HPQCC](#)
[CX3225CA12000P0HPQCC](#) [CX3225CA48000P0HPQCC](#) [CX3225CA12000F0KFQCC](#) [CX3225CA16000P0HPQCC](#)
[CX3225CA12000D0KPSC1](#) [CX3225CA16000H0MSVCC](#)