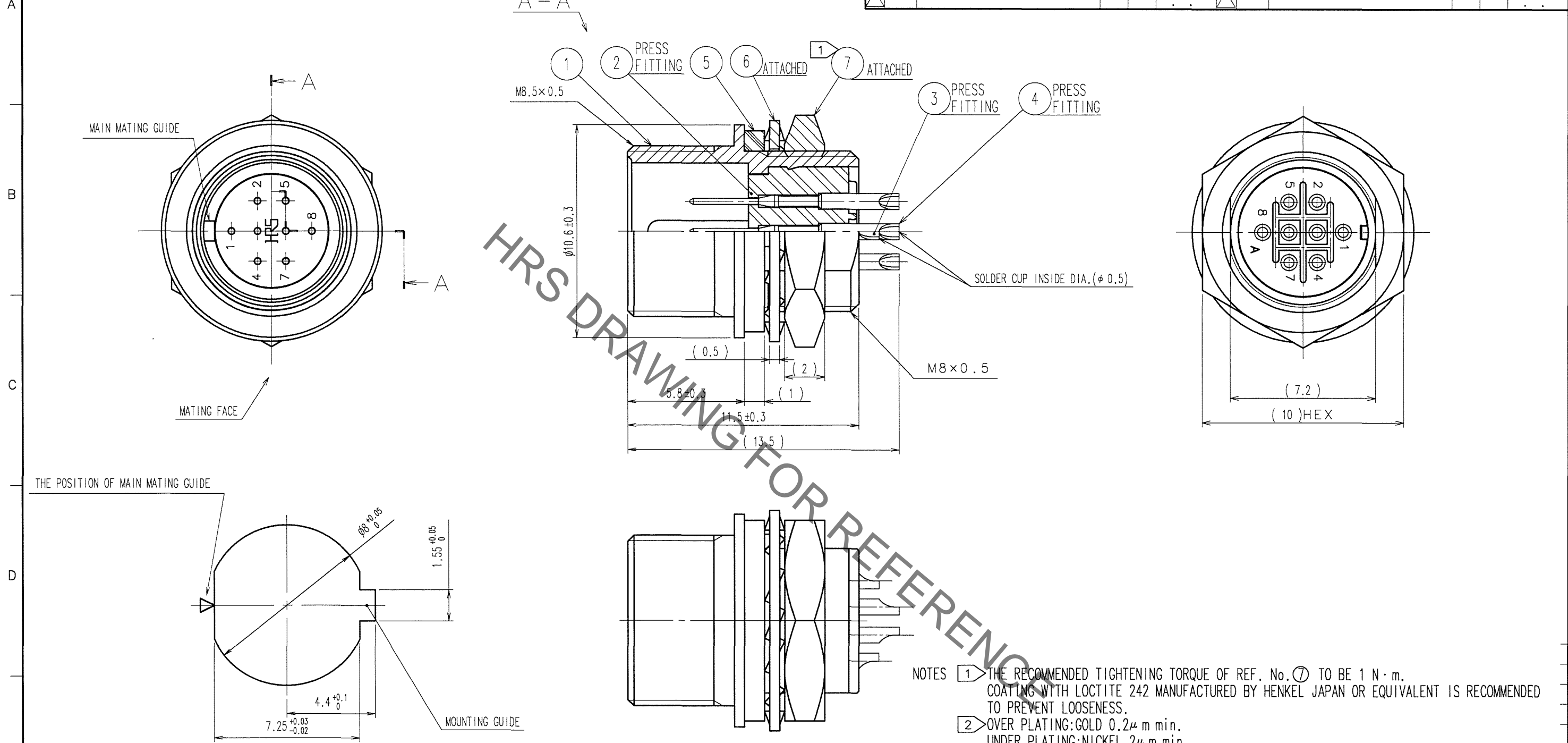


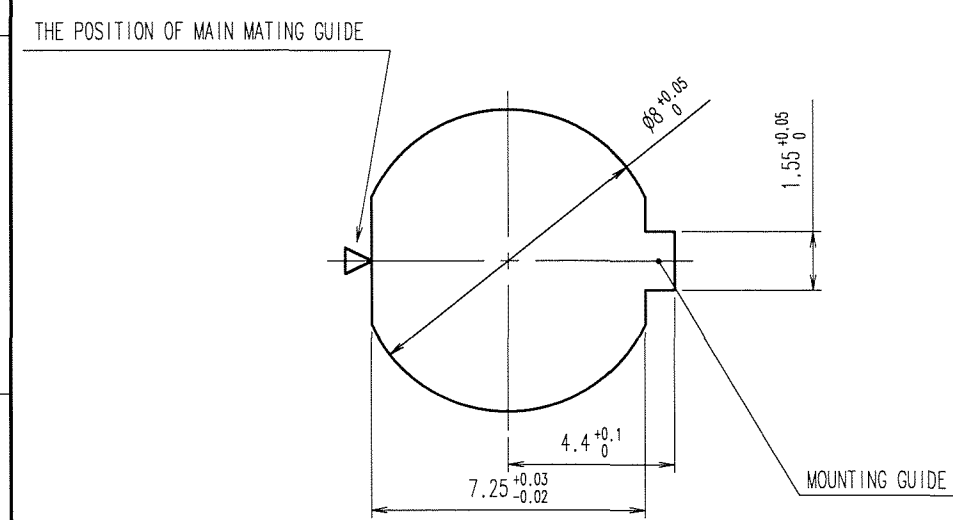
Jan.1.2022 Copyright 2022 HIROSE ELECTRIC CO., LTD. All Rights Reserved.
In case of consideration for using Automotive equipment / device which demand high reliability, kindly contact our sales window correspondents.

COUNT	DESCRIPTION OF REVISIONS	BY	CHKD	DATE	COUNT	DESCRIPTION OF REVISIONS	BY	CHKD	DATE



HRS DRAWING FOR REFERENCE

NOTES ① THE RECOMMENDED TIGHTENING TORQUE OF REF. No. ⑦ TO BE 1 N · m.
COATING WITH LOCTITE 242 MANUFACTURED BY HENKEL JAPAN OR EQUIVALENT IS RECOMMENDED TO PREVENT LOOSENESS.
② OVER PLATING: GOLD 0.2 μ m min.
UNDER PLATING: NICKEL 2 μ m min.



PANEL CUTOUT FROM MATING FACE
t = 0.7 TO 2

4	PHOSPHOR BRONZE	②			
3	PHOSPHOR BRONZE	②	7	ZINC ALLOY	NICKEL PLATING
2	POLYPHENYLENE SULFIDE	(BLACK) UL94V-0	6	PHOSPHOR BRONZE	NICKEL PLATING
1	ZINC ALLOY	MATTE FINISH NICKEL PLATED	5	ETHYLENE PROPYLENE RUBBER	(BLACK)
NO.	MATERIAL	FINISH, REMARKS	NO.	MATERIAL	FINISH, REMARKS

CODE NO. (OLD) CL		DRAWN <i>M. Sato</i> 07.04.09	DESIGNED H. Kawashima 07.4.10	CHECKED Y. Yamada 07.04.10	APPROVED E. Kimura 07.04.10	RELEASED ..
DRAWING NO. EDC3-047753-73		PART NO. HR25-7TR-8P(73)		CODE NO. CL125-0012-4-73		
SCALE 5 : 1		UNITS mm		HRS HIROSE ELECTRIC CO., LTD		

TO
R

Mouser Electronics

Authorized Distributor

Click to View Pricing, Inventory, Delivery & Lifecycle Information:

[Hirose Electric:](#)

[HR25-7TR-8P\(73\)](#)