

---

# Product datasheet

## L 8 W/840

LUMILUX T5 Short | Tubular fluorescent lamps 16 mm, short, with G5 base



## Product datasheet

### Technical data

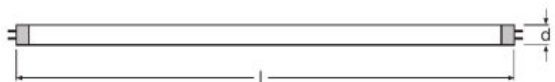
#### Electrical data

Nominal wattage	8.00 W
Rated lamp efficacy (HF data 25 °C)	Under clarification by authority and standardization body
Rated wattage	7.10 W

#### Photometrical data

Rated lamp efficacy (standard condition)	61 lm/W
Color rendering index Ra	≥80
Rated luminous flux	430 lm
Luminous flux at	430 lm
Light color	840
Rated color temperature	4000 K
Nominal luminous flux	430 lm
Light color (designation)	LUMILUX Cool White
Rated LLMF at 2,000 h	0.90
Rated LLMF at 4,000 h	0.84
Rated LLMF at 6,000 h	0.79
Rated LLMF at 8,000 h	0.75
Color temperature	4000 K
Luminous flux	430 lm

#### Dimensions & weight



Tube diameter	16 mm
Length	288.0 mm
Length with base excl. base pins/connection	288.00 mm
Diameter	16.0 mm

## Product datasheet

Product weight	26.00 g
Outer bulb	T16
Maximum diameter	16.0 mm

### Temperatures & operating conditions

Rated ambient temp.w.max.luminous flux	35.0 °C
--	---------

### Lifespan

Lifespan	10000 h <sup>1)</sup>
Rated lamp survival factor at 2,000 h	0.99
Rated lamp survival factor at 4,000 h	0.99
Rated lamp survival factor at 6,000 h	0.95
Rated lamp survival factor at 8,000 h	0.81
Operation mode LLMF/LSF	HF
Rated lamp life time	10000 h

<sup>1)</sup> With CCG/LLCG

### Additional product data

Base (standard designation)	G5
Mercury content	2.5 mg
Appropriate disposal acc. to WEEE	Yes

### Capabilities

Suitable for indoor	Yes
---------------------	-----

### Certificates & standards

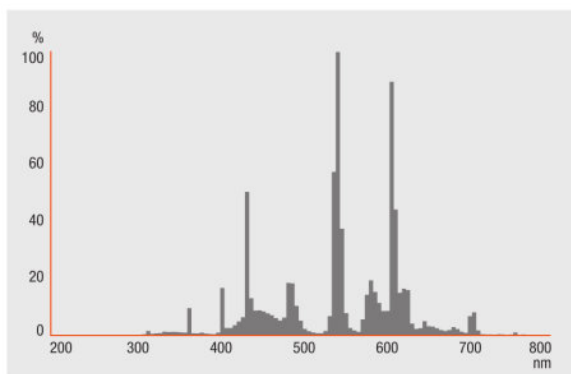
Energy efficiency class	A
Energy consumption	8 kWh/1000h

### Country specific categorizations

Order reference	L 8W/840
-----------------	----------

## Light Distribution

---



---

FL\_840

---

## System guarantee

OSRAM System+ Guarantee in combination with OSRAM ECGs



Die Zuleitungen 3 und 4 sollen so kurz wie möglich sein



Die Zuleitungen 3 und 4 sollen so kurz wie möglich sein

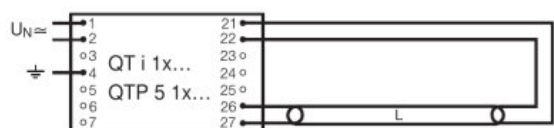
---

QUICKTRONIC L 6W TO L 13W

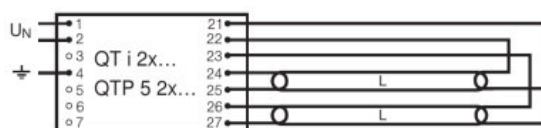
---

QUICKTRONIC QT 1x

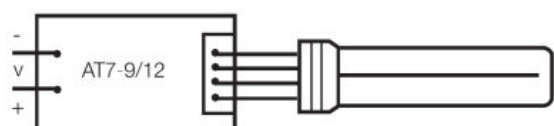
## Product datasheet



QUICKTRONIC INTELLIGENT QT i 1x QTP 5 1x



QUICKTRONIC INTELLIGENT QT i 2x QTP 5 2x



SINGLE LAMP WITH ACCUTRONIC AT

### Logistical Data

Product code	Product description	Packaging unit (Pieces/Unit)	Dimensions (length x width x height)	Volume	Gross weight
4050300241623	L 8 W/840	Shipping carton box 25 Pieces Sleeves	320 mm x 119 mm x 105 mm	4.00 dm <sup>3</sup>	973.10 g

The mentioned product code describes the smallest quantity unit which can be ordered. One shipping unit can contain one or more single products. When placing an order, for the quantity please enter single or multiples of a shipping unit.

### References / Links

For more information on QUICKTRONIC electronic control gear go to

▶ [www.osram.com/QUICKTRONIC](http://www.osram.com/QUICKTRONIC)

### Disclaimer

Subject to change without notice. Errors and omission excepted. Always make sure to use the most recent release.

OSRAM is distribution partner  
of LEDVANCE of LAMPS

**OSRAM**

OSRAM GmbH  
Marcel-Breuer-Strasse 6  
80807 Munich, Germany