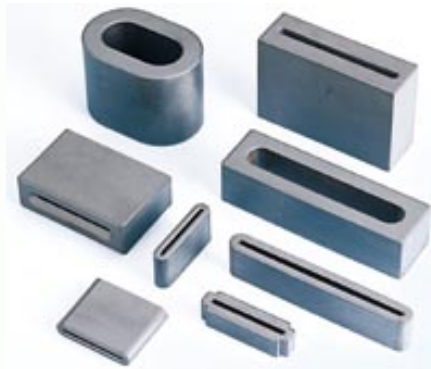
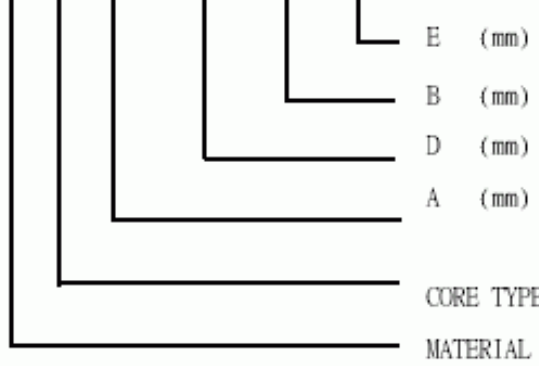


▼FF SERIES(FLAT CABLE SUPPRESSION CORES)

1.ORDERING CODE

K1 FF 49.6X 12.0X 6.5 X1.3



2.SHAPES

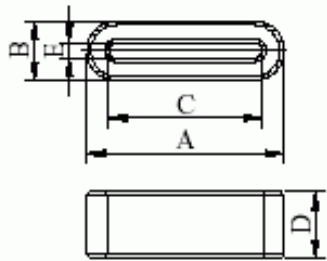


Fig. 1

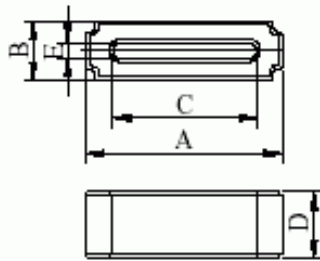


Fig. 2

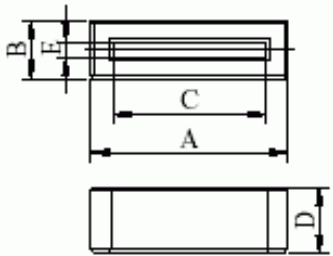


Fig. 3

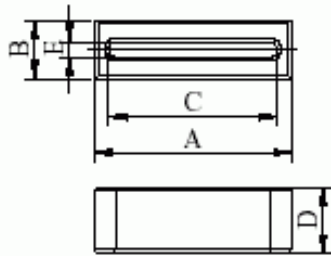


Fig. 4

3.DIMENSIONS

NO.	5FERRICO PART NO.	Fig.	A	B	C	D	E	APPLICABLE CABLE (WIDE)	IMPEDANCE ( $\Omega$ ) TYP.	
									25MHz	100MHz
1	<a href="#">K1 FF 8.5X5.0X2.0X0.6</a>	1	8.5±0.3	2.0±0.2	6.0±0.2	5.0±0.3	0.5±0.2	MAX. 5.0	13	44
2	<a href="#">K1 FF 10.0X20.0X7.01X4.0</a>	3	10.0±0.5	7.01±0.4	7.0 ±0.4	20.0±0.5	4.0±0.4	MAX. 6.0	60	104
3	<a href="#">K1 FF 11.5X2.0X3.0X0.7</a>	4	11.5±0.3	3.0±0.3	8.0 ±0.3	2.0±0.2	0.7±0.2	MAX. 7.0	17	60
4	<a href="#">K3 FF 13.5X6.0X2.0X0.5</a>	1	13.5±0.4	2.0±0.5	11.0 ±0.4	6.0±0.3	0.5± <sup>0.4</sup> <sub>0</sub>	MAX. 10.0	16	48
5	<a href="#">K3 FF 14.0X15.0X9.0X4.0</a>	3	14.0±0.5	9.0±0.5	9.0 ±0.4	15.0±0.3	4.0±0.4	MAX. 8.0	54	93
6	<a href="#">K1 FF 16.0X9.0X5.0X0.5</a>	1	16.0±0.5	5.0± <sup>0</sup> <sub>0.7</sub>	11.5 ±0.4	9.0±0.5	0.5± <sup>0.6</sup> <sub>0</sub>	MAX. 10.5	38	90
7	<a href="#">K1 FF 16.0X12.0X5.0X0.5</a>	1	16.0±0.5	5.0± <sup>0</sup> <sub>0.7</sub>	11.5 ±0.4	12.0±0.5	0.5± <sup>0.6</sup> <sub>0</sub>	MAX. 10.5	45	96
8	<a href="#">K1 FF 16.0X12.0X5.0X1.3</a>	1	16.0±0.4	5.0±0.3	11.5 ±0.4	12.0±0.5	1.3±0.2	MAX. 10.5	42	83
9	<a href="#">K1 FF 16.6X20.0X3.75X0.7</a>	1	16.6±0.3	3.75±0.3	13.0 ±0.3	20.0±0.4	0.7±0.3	MAX. 12.0	51	123
10	<a href="#">K1 FF 17.0X12.0X2.8X0.7</a>	1	17.0±0.5	2.8±0.3	13.0 ±0.5	12.0±0.5	0.7±0.3	MAX. 12.0	29	82
11	<a href="#">K1 FF 17.0X10.0X4.5X1.5</a>	1	17.0±0.3	4.5±0.3	14.0 ±0.3	10.0±0.4	1.5±0.3	MAX. 13.0	23	53
12	<a href="#">K1 FF 17.0X9.0X5.0X0.8</a>	1	17.0±0.4	5.0±0.4	13.4 ±0.4	9.0±0.3	0.8±0.4	MAX. 12.5	35	77
13	<a href="#">K1 FF 17.0X12.0X5.0X0.8</a>	1	17.0±0.4	5.0±0.4	13.4±0.4	12.0±0.4	0.8±0.4	MAX. 12.5	41	86
14	<a href="#">K1 FF 17.0X12.0X5.0X1.0</a>	1	17.0±0.4	5.0±0.4	13.4±0.4	12.0±0.4	1.0±0.2	MAX. 12.5	37	71
15	<a href="#">K1 FF 17.85X17.2X8.35X5.5</a>	4	17.85 ± <sup>0.15</sup> <sub>0.4</sub>	8.35±0.3	13.45±0.3	17.2±0.3	5.5± <sup>0</sup> <sub>0.3</sub>	MAX.12.5	40	90
16	<a href="#">K1 FF 18.0X8.0X2.3X0.7</a>	1	18.0±0.3	2.3±0.2	15.0±0.3	8.0±0.4	0.7±0.2	MAX.14.0	16	47
17	<a href="#">K1 FF 18.0X10.0X4.5X1.5</a>	1	18.0±0.3	4.5±0.3	15.0 ±0.4	10.0±0.4	1.5±0.3	MAX. 14.0	22	52
18	<a href="#">K1 FF 19.0X15.0X4.0X1.5</a>	1	19.0±0.8	4.0±0.3	13.5 ±0.8	15.0±0.5	1.5±0.3	MAX. 12.5	42	89
19	<a href="#">K1 FF 19.0X12.0X6.5X1.5</a>	1	19.0±0.3	6.5±0.2	13.45 ±0.3	12.0±0.3	1.5±0.15	MAX. 12	42	73
20	<a href="#">K1 FF 20.0X12.0X6.5X1.3</a>	1	20.0±0.5	6.5±0.5	15.0±0.5	12.0±0.5	1.3± <sup>0.5</sup> <sub>0.3</sub>	MAX. 14.0	43	94
21	<a href="#">F6 FF 21.5X6.0X3.0X0.7</a>	3	21.5±0.4	3.0±0.3	18.5±0.4	6.0±0.3	0.7±0.3	MAX. 17.5	13	80

22	<a href="#">K1 FF 22.8X6.0X2.8X0.7</a>	4	22.8±0.5	2.8±0.3	18.7±0.5	6.0±0.3	0.7±0.3	MAX. 17.5	20	68
23	<a href="#">K3 FF 23.0X7.5X6.0X1.0</a>	1	23.0±0.6	6.0±0.4	18.0±0.6	7.5±0.4	1.0±0.4	MAX. 17.0	26	61
24	<a href="#">K1 FF 23.3X12.0X3.0X0.7</a>	4	23.0±0.5	3.0± 0.4 0.2	20.0±0.5	12.0±0.5	0.7± 0.7 0	MAX. 19.0	25	75
25	<a href="#">K1 FF 23.8X15.0X6.3X1.1</a>	1	23.8±0.5	6.3±0.3	18.8±0.5	15.0±0.5	1.1± 0.4 0.3	MAX. 17.5	47	98
26	<a href="#">K1 FF 24.5X12.0X5.0X0.5</a>	1	24.5±0.5	5.0± 0 0.7	20.0±0.5	12.0±0.5	0.5± 0.6 0	MAX. 19.0	35	90
27	<a href="#">K1 FF 24.5X20.0X5.0X0.5</a>	1	24.5±0.5	5.0± 0 0.7	20.0±0.5	20.0±0.6	0.5± 0.6 0	MAX. 19.0	53	115
28	<a href="#">K1 FF 25.0X12.0X5.0X0.8</a>	1	25.0±0.5	5.0±0.5	21.0±0.5	12.0±0.5	0.8±0.3	MAX. 20.0	35	88
29	<a href="#">K1 FF 25.0X12.0X3.0X0.8</a>	1	25.0±0.5	3.0±0.3	21.0±0.5	12.0±0.5	0.8±0.3	MAX. 20.0	29	90
30	<a href="#">K1 FF 25.0X12.0X5.0X1.3</a>	1	25.0±0.5	5.0±0.3	17.3±0.5	12.0±0.5	1.3±0.3	MAX. 16.0	37	87
31	<a href="#">K1 FF 26.0X9.0X5.0X1.2</a>	1	26.0±0.5	5.0±0.4	22.0±0.5	9.0±0.5	1.2±0.4	MAX. 21.0	30	91
32	<a href="#">K3 FF 28.0X6.0X5.0X0.8</a>	1	28.0±0.5	5.0±0.4	24.0±0.5	6.0±0.4	0.8± 0.4 0.2	MAX. 23.0	26	81
33	<a href="#">K1 FF 28.0X14.6X7.7X1.4</a>	2	28.0±0.7	7.7±0.5	23.0±0.8	14.6±0.6	1.4±0.4	MAX. 22.0	45	100
34	<a href="#">K1 FF 28.6X15.0X4.55X1.5</a>	1	28.6±0.4	4.45±0.3	25.0±0.4	15.0±0.4	1.5±0.3	MAX. 24.0	26	63
35	<a href="#">K1 FF 28.6X31.0X7.7X1.7</a>	1	28.6±1.0	7.7±0.5	23.5±0.8	31.0±1.0	1.7±0.4	MAX. 22.5	84	200
36	<a href="#">K1 FF 29.0X10.0X8.0X1.85</a>	1	29.0±1.0	8.0±0.3	21.5±0.5	10.0±0.3	1.85±0.3	MAX. 20.5	36	85
37	<a href="#">K1 FF 29.0X10.0X8.0X2.0</a>	1	29.0±0.5	8.0±0.4	22.0±0.5	10.0±0.5	2.0±0.3	MAX. 21.0	34	82
38	<a href="#">K1 FF 31.0X12.0X3.0X0.5</a>	1	31.0±0.7	3.0±0.3	27.0±0.8	12.0±0.5	0.5± 0.7 0	MAX. 26.0	31	94
39	<a href="#">K1 FF 31.0X12.0X5.0X0.5</a>	1	31.0±0.7	5.0± 0 0.7	27.0± 0.9 0.7	12.0±0.5	0.5± 0.7 0	MAX. 26.0	31	92
40	<a href="#">K1 FF 31.0X12.0X5.0X1.0</a>	1	31.0±0.7	5.0± 0 0.7	27.0± 0.9 0.7	12.0±0.5	1.0±0.3	MAX. 25.0	29	83
41	<a href="#">K3 FF 32.0X9.7X7.75X1.5</a>	1	32.0±0.5	7.75±0.5	27.8±0.5	9.7±0.6	1.5±0.4	MAX. 26.8	35	98
42	<a href="#">K3 FF 32.0X30.0X7.0X1.0</a>	4	32.0±0.6	7.0±0.3	26.0±0.5	30.0±0.6	1.0±0.3	MAX. 25.0	100	260
43	<a href="#">K1 FF 33.2X15.0X7.7X1.5</a>	1	33.2±0.8	7.7± 0.6 0.1	27.0±0.8	15.0±0.6	1.5±0.2	MAX. 26.0	43	100
44	<a href="#">K1 FF 33.5X8.0X6.5X1.3</a>	1	33.5±1.0	6.5±0.4	27.0±0.8	8.0±0.5	1.3±0.3	MAX. 26.0	25	75
45	<a href="#">K1 FF 33.5X12.0X6.5X1.3</a>	1	33.5±1.0	6.5±0.4	27.0±0.8	12.0±0.5	1.3±0.3	MAX. 26.0	32	83
46	<a href="#">K1 FF 33.5X12.0X6.5X1.3</a>	1	33.5±1.0	6.5±0.4	28.0±0.8	12.0±0.5	1.3±0.3	MAX. 27.0	29	78

47	<u>K1 FF 33.5X20.0X6.5X1.3</u>	1	33.5±1.0	6.5±0.4	27.0±0.8	20.0±0.5	1.3±0.3	MAX. 26.0	48	113
48	<u>K1 FF 36.0X12.0X3.5X0.8</u>	4	36.0±1.0	3.5±0.2	32.0±0.8	12.0±0.5	0.8±0.3	MAX. 31.0	38	105
49	<u>K1 FF 38.5X25.4X12.0X1.8</u>	4	38.5±1.0	12.0±0.5	26.8±0.8	25.4±0.8	1.8±0.35	MAX. 25.5	91	180
50	<u>K1 FF 38.85X28.6X26.0X12.95</u>	1	38.85 ±0.75	26.0±0.6	26.5±0.75	28.6±0.7	12.95 ±0.25	MAX. 25.0	102	170
51	<u>K1 FF 40.0X10.0X6.5X1.3</u>	1	40.0±1.0	6.5±0.5	35.0±0.8	10.0±0.5	1.3±0.3	MAX. 34.0	25	78
52	<u>K1 FF 40.0X12.0X6.5X1.3</u>	1	40.0±1.0	6.5±0.5	35.0±0.8	12.0±0.5	1.3±0.3	MAX. 34.0	29	84
53	<u>K1 FF 40.0X20.0X6.5X1.3</u>	1	40.0±1.0	6.5±0.5	35.0±0.8	20.0±0.5	1.3±0.3	MAX. 34.0	44	110
54	<u>K1 FF 41.0X12.0X6.5X1.3</u>	1	41.0±1.0	6.5±0.6	36.0±0.7	12.0±0.5	1.3±0.3	MAX. 35.0	40	121
55	<u>K1 FF 45.1X28.6X12.5X1.5</u>	4	45.1±0.9	12.5±0.25	34.4±0.64	28.6±0.64	1.5±0.4	MAX. 33.5	100	200
56	<u>K1 FF 45.2X12.0X6.5X1.3</u>	1	45.2±1.0	6.5±0.5	40.0±0.9	12.0±0.5	1.3± 0.5 0.3	MAX. 39.0	29	89
57	<u>K1 FF 46.7X12.0X5.0X0.5</u>	1	46.7±1.0	5.0±0.5	42.2±0.7	12.0±0.5	0.5± 0.6 0	MAX. 41.0	32	106
58	<u>K1 FF 47.24X31.75X15.24X2.74</u>	4	47.24±1.0	15.24±0.5	40.74±0.8	31.75±0.6	2.74±0.5	MAX. 39.5	120	300
59	<u>K1 FF 49.6X12.0X6.5X1.3</u>	1	49.6±1.0	6.5±0.5	44.0±0.8	12.0±0.5	1.3± 0.5 0.3	MAX. 43.0	29	91
60	<u>K1 FF 55.1X25.4X12.7X1.27</u>	4	55.1±1.27	12.7±0.51	43.69 ±1.02	25.4±0.76	1.27±0.38	MAX. 42.5	74	179
61	<u>K1 FF 57.6X12.0X6.5X1.3</u>	1	57.6±1.2	6.5±0.3	52.0±0.7	12.0±0.5	1.3± 0.7 0.5	MAX. 51.0	28	93
62	<u>K3 FF 60.0X12.0X10.0X2.0</u>	1	60.0±1.5	10.0±0.5	52.0±1.0	12.0±0.5	2.0±0.5	MAX. 51.0	41	117
63	<u>K1 FF 63.5X15.0X12.7X1.6</u>	3	63.5±1.2	12.7±0.5	52.0±1.0	15.0±0.5	1.6±0.3	MAX. 51.0	63	180

REMARK : OTHER SIZE ARE AVAILABLE UPON REQUEST