

SPECIFICATIONS

ELECTRICAL

RESISTANCE RANGE — SEE CHART
 RESISTANCE TOLERANCE — ±3%
 LINEARITY(INDEPENDENT) — ±0.25%(10 TURN)±0.35%(5 TURN)±(3 TURN)
 ELECTRICAL ANGLE — 3600(10 TURN)1800(5 TURN) ±5° (3 TURN)1080±5°
 END RESISTANCE — 0.2% OR 2 OHMS
 ELECTRICAL NOISE(ENR) — 100 OHMS MAX
 RESOLUTION — SEE CHART
 INSULATION RESISTANCE — 100 MEGOHMS AT 500 VDC
 DIELECTRIC STRENGTH — 500 VAC MIN.
 POWER RATING — 1 WATT(10 TURN) .5 WATT(5 TURN) .3 WATT (3 TURN)

MECHANICAL

NO OF TURNS — MW10B-10(10 TURN) MW10B-5(5 TURN) MW10B-3(3 TURNS)
 MECHANICAL ANGLE — 3600(10 TURN)1800(5 TURN)±30°-0° (3 TURN)1080°
 ROTATIONAL LIFE — 1,000,000 TURNS (3&5 TURN)600,000
 STOP STRENGTH — 15 IN. OZ.
 STARTING TORQUE — 0.5 IN. OZ. MAX
 WEIGHT — 0.7 OZ. (10 TURN) 0.6 OZ (5 TURN)(3 TURN)

ENVIRONMENTAL

OPERATING TEMPERATURE — -55°C TO +105°C
 TEMPERATURE COEFFICIENT — SEE CHART
 VIBRATION — 10HZ TO 2000HZ 15G
 SHOCK — 50G 11MS
 MOISTURE RESISTANCE — 40°C 95%RH 240 HOURS

MATERIALS

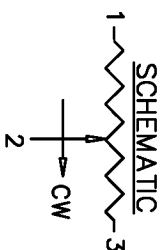
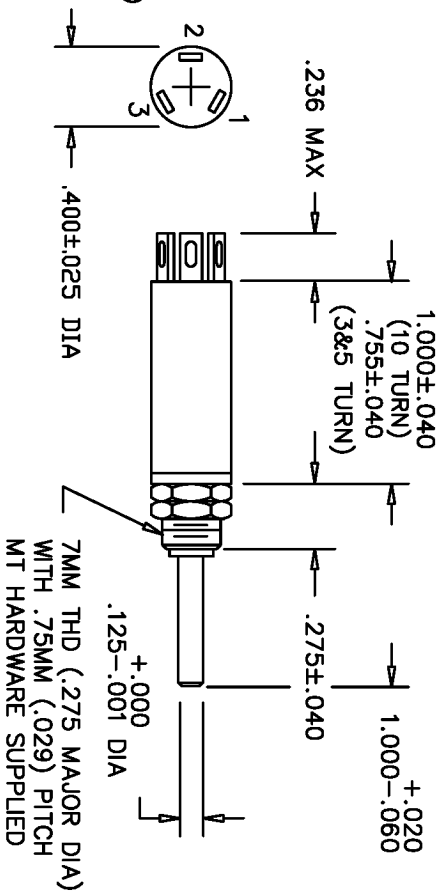
HOUSING — ANODIZED ALUMINUM
 SHAFT — STAINLESS STEEL
 BUSHING — PLATED BRASS
 TERMINALS — GOLD PLATED
 RESISTANCE ELEMENT — WIREWOUND

OPTIONAL FEATURES

SHAFT MODIFICATIONS

USED ON

REV.	BY	DATE	PART NO.	MW10B
E	PD	11-21 91	MW10B WAS MW10	



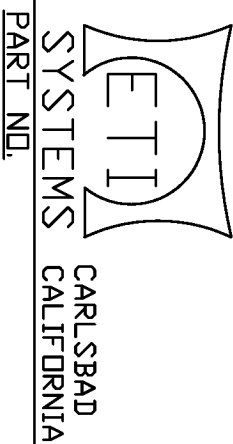
RESOLUTION CHART

RESISTANCE	100	200	500	1K	2K	5K	10K	20K	50K	100K
MW10B-3	.07%	.15%	.19%	.16%	.10%	.09%	.07%	.05%		
MW10B-5	.13%	.16%	.12%	.09%	.07%	.055%	.043%	.034%	.025%	
MW10B-10	.08%	.07%	.07%	.06%	.05%	.035%	.027%	.022	.016%	.013%
TEMP. COEFF.	80 PPM/°C									
	20 PPM/°C									

THIS DOCUMENT CONTAINS PROPRIETARY DATA OF POLARIS INDUSTRIAL ENTERPRISES, INC. NO DISCLOSURE, REPRODUCTION, OR USE OF ANY PART THERE OF MAY BE MADE EXCEPT BY WRITTEN PERMISSION.

TITLE

MULTI-TURN
 POTENTIOMETER



PART NO.

MW10B

TOLERANCES

XX = +/- .010° FRACT. = +/- 1/64°
 XXX = +/- .005° ANGLES = +/- 1/2°

ALL SPECIFICATIONS SUBJECT TO CHANGE WITHOUT NOTICE.

SCALE	NONE
DATE:	8-9-86
BY	
APPRV'D	BT
CODE IDENT:	19477

Mouser Electronics

Authorized Distributor

Click to View Pricing, Inventory, Delivery & Lifecycle Information:

[ETI Systems:](#)

[MW10B-3-10K](#) [MW10B-10-1K](#) [MW10B-10-5K](#) [MW10B-10-10K](#)