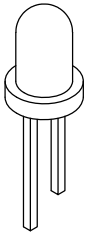


**NOTES:**

1. ROHS COMPLIANT
2. MATERIAL:  
 PANEL CONNECTOR SOCKET - POLYPROPYLENE, UL RATING 94-HB  
 HEADER CONNECTOR - POLYESTER, UL RATING 94-V0  
 TERMINAL - PHOSPHOR BRONZE, TIN PLATE  
 WIRE - 24 AWG 1007/1569
3. MOUNTING: HOLE SIZE: 11/64" (4.37mm)
4. PANEL THICKNESS: .030" (.762mm) MIN - .075" (1.905mm) MAX  
 FOR PANEL THICKNESS .030" (.762mm) - .050" (1.270mm) USE 1 SPC 040 SPACER  
 FOR PANEL THICKNESS .055" (1.397mm) - .075" (1.905mm) NO SPACER REQUIRED
5. LED LEAD LENGTH: FOR SMC 130 - .380" (9.652mm); FOR SMC 170 - .320" (8.128mm)
6. U.S. & FOREIGN PATENT ISSUED AND PENDING

REVISIONS				
ECN #	REV	DESCRIPTION	DATE	INITIALS
	001	REVISED PER ECR 111009AZ01	9/28/10	KH

LED/SPACER  
(ORDER SEPARATELY)



3 MM LED



SPC 040

CABLE ORDERING CODE EXAMPLE:  
**CNX B E 4 1 12**

TERMINATION *	
X=	STRIPPED END
E=	SINGLE ROW LOCKING HEADER
G=	SINGLE ROW PLAIN HEADER

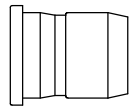
WIRE SIZE *	
4	24 AWG

WIRE COLOR *	
1	WHITE - BLACK
2	RED - BLACK

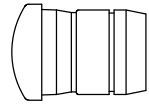
WIRE LENGTH *	
04	4 INCHES (101.6mm)
06	6 INCHES (152.4mm)
08	8 INCHES (203.2mm)
12	12 INCHES (304.8mm)
18	18 INCHES (457.2mm)
24	24 INCHES (609.6mm)

\* CALL FACTORY  
FOR ADDITIONAL  
OPTIONS

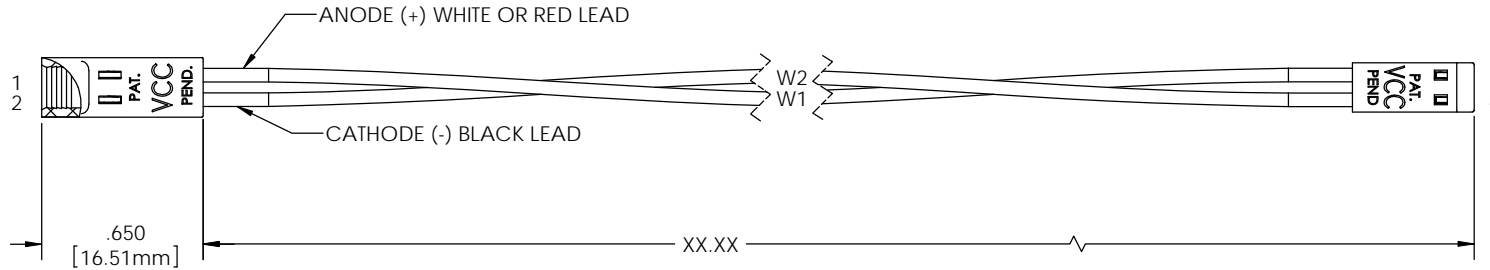
LENS/PANEL MOUNT  
(ORDER SEPARATELY)



SMC 130



SMC 170



<small>DIMENSION STYLE: INCHES / MM GENERAL TOLERANCES UNLESS OTHERWISE SPECIFIED:</small> INCHES ±.000 MM ±.127  <small>THIRD ANGLE PROJECTION</small>	MATERIAL SEE NOTES	 <b>VGG</b> OPTOELECTRONICS <small>190 BOSSTICK BLVD, SUITE 101 SAN MARCOS, CA 92069 U.S.A          PHONE: (760) 560-1300, FAX: (760) 560-1301 EMAIL: vccsales@vccite.com</small>				
	FINISH SEE NOTES	TITLE: <b>CNX B CABLE ASSEMBLY</b>				
<small>PROPRIETARY AND CONFIDENTIAL</small> <small>THE INFORMATION CONTAINED          IN THIS DRAWING IS THE SOLE          PROPERTY OF VISUAL          COMMUNICATIONS COMPANY, INC.          ANY REPRODUCTION IN PART OR AS          A WHOLE WITHOUT THE WRITTEN          PERMISSION OF VISUAL          COMMUNICATIONS          COMPANY, INC IS PROHIBITED.</small>	APPROVAL	DATE	SIZE	DWG. NO.	REV	
	DRAWN K.Howard	9/28/10	<b>B</b>	CNX B ASSY	001	
	CHECKED DPZ	11/29/10	SCALE: 1:1		SHEET 1 OF 1	
DO NOT SCALE DRAWING						

# Mouser Electronics

Authorized Distributor

Click to View Pricing, Inventory, Delivery & Lifecycle Information:

VCC:

[CNXBX2124](#) [CNX\\_B\\_E\\_4\\_1\\_04](#) [CNX\\_B\\_E\\_4\\_1\\_06](#) [CNX\\_B\\_E\\_4\\_1\\_08](#) [CNX\\_B\\_E\\_4\\_1\\_12](#) [CNX\\_B\\_E\\_4\\_1\\_18](#)  
[CNX\\_B\\_E\\_4\\_1\\_24](#) [CNX\\_B\\_E\\_4\\_2\\_18](#) [CNX\\_B\\_E\\_4\\_2\\_24](#) [CNX\\_B\\_X\\_2\\_1\\_24](#) [CNX\\_B\\_X\\_4\\_1\\_04](#)  
[CNX\\_B\\_X\\_4\\_1\\_06](#) [CNX\\_B\\_X\\_4\\_1\\_08](#) [CNX\\_B\\_X\\_4\\_1\\_12](#) [CNX\\_B\\_X\\_4\\_1\\_18](#) [CNX\\_B\\_X\\_4\\_1\\_24](#)  
[CNX\\_B\\_X\\_4\\_2\\_04](#) [CNX\\_B\\_X\\_4\\_2\\_08](#) [CNX\\_B\\_X\\_4\\_2\\_12](#)