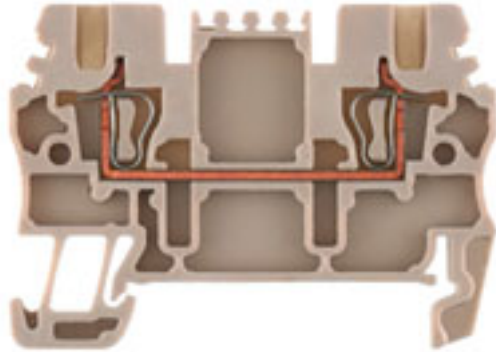


**Z-series
ZDU 1.5**

Weidmüller Interface GmbH & Co. KG
Klingenbergstraße 16
D-32758 Detmold
Germany
Fon: +49 5231 14-0
Fax: +49 5231 14-292083
www.weidmueller.com



Terminal blocks in tension clamp system and the Z Series are specially customised to the customers' requirements. Less space, spacious labelling area, integrated test point, cross-connection functionality within the Z Series and another family of terminals by Weidmüller. Z-Series terminals have a large clamping range and one or two cross-connection slots. Plug-in standard cross-connections enable potentials to be distributed over any number of terminals.

General ordering data

Type	ZDU 1.5
Order No.	1775480000
Version	Z-series, Feed-through terminal, Rated cross-section: 1.5 mm ² , Tension clamp connection, Wemid, Beige, Direct mounting
GTIN (EAN)	4032248181469
Qty.	100 pc(s).

Z-series ZDU 1.5

Weidmüller Interface GmbH & Co. KG
 Klingenbergstraße 16
 D-32758 Detmold
 Germany
 Fon: +49 5231 14-0
 Fax: +49 5231 14-292083
 www.weidmueller.com

Technical data

Dimensions and weights

Length	51.5 mm	Width	3.5 mm
Height	36.5 mm	Height of lowest version	37 mm
Net weight	4.06 g		

Temperatures

Operating temperature		Storage temperature	
Continuous operating temp., min.	-50 °C	Continuous operating temp., max.	120 °C

Rated data IECEx/ATEX

Certificate No. (ATEX)	KEMA01ATEX2 106U	ATEX certificate	KEMA01ATEX2 106U_d.pdf
ATEX certificate	KEMA01ATEX2 106U_e.pdf	IEC Ex certificate	IECExULD05.0009U_e.pdf
Max. voltage (ATEX)	550 V	Current (ATEX)	15 A
Wire cross section max. (ATEX)	1.5 mm ²	Voltage, cross-connection	CrossConnectionGuide.pdf
Operating temperature range	For operating temperature range see EC Design Test Certificate / IEC Ex-Certificate of Conformity	Marking EN 60079-7	
Marking ATEX Directive 94/9/EC	II 2 G D		Ex e II

Additional technical data

Explosion-tested version	Yes	Installation advice	Direct mounting
Number of similar terminals	1	Open sides	right
Type of mounting	Snap-on	Version	Tension-clamp connection, for plug-in cross-connector, One end without connector

CSA ratings data

Certificate No. (CSA)	200039-1152892	Voltage size C (CSA)	300 V
Current size C (CSA)	20 A	Wire cross section max. (CSA)	14 AWG
Wire cross section min. (CSA)	26 AWG		

Clampable wires (additional connection)

Conductor cross-section, flexible plus plastic collar DIN 46228/1, further connection, min.	0.5 mm ²	Conductor cross-section, flexible plus plastic collar DIN 46228/1, further connection, max.	1.5 mm ²
---	---------------------	---	---------------------

**Z-series
ZDU 1.5**

Weidmüller Interface GmbH & Co. KG
 Klingenbergstraße 16
 D-32758 Detmold
 Germany
 Fon: +49 5231 14-0
 Fax: +49 5231 14-292083
 www.weidmueller.com

Technical data**Clampable wires (rated connection)**

Type of connection	Tension clamp connection	Stripping length	10 mm
Blade size	0.4 x 2.0 mm	Connection direction	top
Number of connections	2	Clamping range, rated connection, min.	0.05 mm ²
Clamping range, rated connection, max.	1.5 mm ²	Gauge to IEC 60947-1	B1
Wire connection cross section, solid core, max. rated connection	0.5 mm ²	Wire connection cross section, solid core max. rated connection	1.5 mm ²
Wire connection cross section, finely stranded, max.	1.5 mm ²	Wire connection cross-section, finely stranded, min.	0.5 mm ²
Wire connection cross section, finely stranded with wire-end ferrules DIN 46228/1, rated connection, min.	0.5 mm ²	Wire connection cross section, finely stranded with wire-end ferrules DIN 46228/1, rated connection, max.	1.5 mm ²
Cross-section for connected conductor, finely stranded with wire-end ferrules and plastic collars DIN 46228/4, rated connection, min.	0.5 mm ²	Wire connection cross-section, finely stranded with wire-end ferrules and plastic collars DIN 46228/4, rated connection, max.	1.5 mm ²
Twin wire-end ferrules, min.	0.5 mm ²	Twin wire-end ferrules, max.	0.75 mm ²
Wire connection cross section AWG, min.	AWG 30	Wire connection cross section AWG, max.	AWG 16

Rated data

Rated cross-section	1.5 mm ²	Rated voltage	500 V
Rated impulse withstand voltage	6 kV	Rated current	17.5 A
Current at maximum wires	17.5 A	Standards	IEC 60947-7-1
Pollution severity	3		

UL ratings data

Certificate No. (UR)	E60693	Voltage size C (UR)	300 V
Current size C (UR)	15 A	Conductor size Factory wiring max. (UR)	14 AWG
Conductor size Factory wiring min. (UR)	26 AWG	Conductor size Field wiring max. (UR)	14 AWG

Material data

Insulating material	Wemid	Material	Wemid
Colour	Dark Beige	UL 94 flammability rating	V-0

System specifications

Product family	Z-series	Type of connection	Tension clamp connection
Connection direction	top	Number of levels	1
Number of connections	2	No. of clamping points per level	2
Levels cross-connected internally	No	Mounting rail	TS 35
End cover plate required	Yes		

Classifications

ETIM 3.0	EC000897	UNSPSC	30-21-18-11
eClass 5.1	27-14-11-20	eClass 6.2	27-14-11-20
eClass 7.1	27-14-11-20		

Data sheet

Z-series
ZDU 1.5

Weidmüller Interface GmbH & Co. KG
Klingenbergstraße 16
D-32758 Detmold
Germany
Fon: +49 5231 14-0
Fax: +49 5231 14-292083
www.weidmueller.com

Technical data

Approvals

Approvals



ROHS

Conform

Data sheet

**Z-series
ZDU 1.5**

Weidmüller Interface GmbH & Co. KG
 Klingenbergstraße 16
 D-32758 Detmold
 Germany
 Fon: +49 5231 14-0
 Fax: +49 5231 14-292083
 www.weidmueller.com

Accessories

Slotted screwdriver

Slotted screwdriver with rounded blade SD DIN 5265, ISO 2380/2, output to DIN 5264, ISO 2380/1. ChromTop tip, SoftFinish grip



General ordering data

Type	Order No.	Version	GTIN (EAN)	Qty.
SDS 0.4X2.0X60	9037160000	Screwdriver, Blade width (B): 2 mm, Blade length: 60 mm, Blade thickness (A): 0.4 mm	4032248171613	1 pc(s).

Blank



WS markers are the perfect match for the W-series connectors. Thanks to their system compatibility, the WS tags can also be used with the I-series and the Z-series. The large marking surfaces do not only permit long character strings but also multi-line text. WS markers are ideal for labels with long, customised character strings. Thanks to the proven MultiCard format, printing with laser printer, PrintJet ADVANCED, plotter or MC-Mobilo is possible.

- Can be fitted in strips or individually
- Markers in proven MultiCard format

General ordering data

Type	Order No.	Version	GTIN (EAN)	Qty.
WS 12/3.5 MC NE WS	1778270000	Terminal markers, MultiCard, 12 x 3.5 mm, Polyamide 66, Colour: White	4032248161041	600 pc(s).

**Z-series
ZDU 1.5**

Weidmüller Interface GmbH & Co. KG
 Klingenbergstraße 16
 D-32758 Detmold
 Germany
 Fon: +49 5231 14-0
 Fax: +49 5231 14-292083
 www.weidmueller.com

Accessories
ZAP/TW ZDU 1.5/2AN


Weidmüller offers users of modular terminals of the Z-Series a comprehensive range of accessories that render possible appropriate solutions for all - even non-standard - tasks.

The accessories must comply with the same quality standards as the modular terminals themselves.

General ordering data

Type	Order No.	Version	GTIN (EAN)	Qty.
ZAP/TW	1776030000	Z-series, End plate, Partition	4032248188116	20 pc(s).
ZDU1.5/2AN		plate		
ZAP/TW	1776040000	Z-series, End plate, Partition	4032248188123	20 pc(s).
ZDU1.5/2AN		plate		
BL				

ZRH 1.5 S/2


Weidmüller offers users of modular terminals of the Z-Series a comprehensive range of accessories that render possible appropriate solutions for all - even non-standard - tasks.

The accessories must comply with the same quality standards as the modular terminals themselves.

General ordering data

Type	Order No.	Version	GTIN (EAN)	Qty.
ZRH 1.5S/2	1781960000	Accessories, Reducing sleeve	4032248239146	500 pc(s).

**Z-series
ZDU 1.5**

Weidmüller Interface GmbH & Co. KG
 Klingenbergstraße 16
 D-32758 Detmold
 Germany
 Fon: +49 5231 14-0
 Fax: +49 5231 14-292083
 www.weidmueller.com

Accessories
ZQV 1.5


Weidmüller offers users of modular terminals of the Z-Series a comprehensive range of accessories that render possible appropriate solutions for all - even non-standard - tasks.

The accessories must comply with the same quality standards as the modular terminals themselves.

General ordering data

Type	Order No.	Version	GTIN (EAN)	Qty.
ZQV 1.5/2	1776120000	Z-series, Accessories, Cross-connector, For the terminals, No. of poles: 2	4032248200139 60	pc(s).
ZQV 1.5/10	1776200000	Z-series, Accessories, Cross-connector, For the terminals, No. of poles: 10	4032248200177 20	pc(s).
ZQV 1.5/4	1776140000	Z-series, Accessories, Cross-connector, For the terminals, No. of poles: 4	4032248200160 60	pc(s).
ZQV 1.5/5	1776150000	Z-series, Accessories, Cross-connector, For the terminals, No. of poles: 5	4032248236336 20	pc(s).
ZQV 1.5/3	1776130000	Z-series, Accessories, Cross-connector, For the terminals, No. of poles: 3	4032248200153 60	pc(s).

ZTA 5


Weidmüller offers users of modular terminals of the Z-Series a comprehensive range of accessories that render possible appropriate solutions for all - even non-standard - tasks.

The accessories must comply with the same quality standards as the modular terminals themselves.

General ordering data

Type	Order No.	Version	GTIN (EAN)	Qty.
ZTA 5	1776210000	Test adapter, Rated control voltage:	4032248190676 25	pc(s).
ZTA 5/ZA	1776220000	Test adapter, Rated control voltage:	4032248190683 25	pc(s).

**Z-series
ZDU 1.5**

Weidmüller Interface GmbH & Co. KG
 Klingenbergstraße 16
 D-32758 Detmold
 Germany
 Fon: +49 5231 14-0
 Fax: +49 5231 14-292083
 www.weidmueller.com

Accessories
Blank


The dekafix (DEK) marker is the universal marker for all conductor and plug-in connectors as well as for electronic sub-assemblies. The system is ideal for short number sequences and covers a large range of ready-printed markers.

Strips for fast installation in one work step. The printing is easy to read, rich in contrast, and is available in five widths.

- Large range of ready-to-use markers
- Strips for fast installation
- Connector markers, suitable for all Weidmüller cable connectors
- Available as blank cards, MultiCard or as cards with standard printing

General ordering data

Type	Order No.	Version	GTIN (EAN)	Qty.
DEK 5/3.5 MC NE WS	1755270000	Terminal markers, MultiCard, 5 x 3.5 mm, Polyamide 66, Colour: White	4032248017348	500 pc(s).

ZAD


Weidmüller offers users of modular terminals of the Z-Series a comprehensive range of accessories that render possible appropriate solutions for all - even non-standard - tasks.

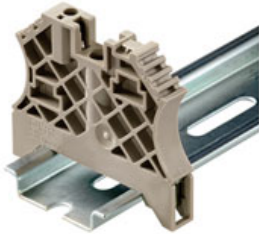
The accessories must comply with the same quality standards as the modular terminals themselves.

General ordering data

Type	Order No.	Version	GTIN (EAN)	Qty.
ZAD 7/4	1781940000	Z-series, Cover	4032248193431	20 pc(s).

**Z-series
ZDU 1.5**

Weidmüller Interface GmbH & Co. KG
 Klingenbergstraße 16
 D-32758 Detmold
 Germany
 Fon: +49 5231 14-0
 Fax: +49 5231 14-292083
 www.weidmueller.com

Accessories
for TS 35 terminal rail


Weidmüller's range of products includes end brackets that guarantee a permanent, reliable mounting on the terminal rail and prevent sliding. Versions with and without screws are available. The end brackets include marking options, also for group markers, and also a test plug holder.

General ordering data

Type	Order No.	Version	GTIN (EAN)	Qty.
EW 35 GR 7032	0383530000	Accessories, End bracket	4008190027322	50 pc(s).
ZEW 35/2	8630740000	Accessories, End bracket	4032248348916	20 pc(s).
EW 35	0383560000	Accessories, End bracket	4008190181314	50 pc(s).
ZEW 35	9540000000	Accessories, End bracket	4008190956264	20 pc(s).
WEW 35/2	1061200000	Accessories, End bracket	4008190030230	100 pc(s).
WEW 35/1	1059000000	Accessories, End bracket	4008190172282	50 pc(s).
EW 35/ SCHA/M3	0258660000	Accessories, End bracket	4008190033477	20 pc(s).

ZRH 1.5 S/1


Weidmüller offers users of modular terminals of the Z-Series a comprehensive range of accessories that render possible appropriate solutions for all - even non-standard - tasks. The accessories must comply with the same quality standards as the modular terminals themselves.

General ordering data

Type	Order No.	Version	GTIN (EAN)	Qty.
ZRH 1.5S/1	1781950000	Accessories, Reducing sleeve	4032248199525	500 pc(s).