

**W-Series
WSI 6/LD 250AC LLC**

Weidmüller Interface GmbH & Co. KG
Klingenbergstraße 16
D-32758 Detmold
Germany
Fon: +49 5231 14-0
Fax: +49 5231 14-292083
www.weidmueller.com



BFI (Blown Fuse Indicator) - circuit featuring new high-efficiency, easy-to-read LED with extra-low creepage current to enhance user protection.

General ordering data

Type	WSI 6/LD 250AC LLC
Order No.	1119870000
Version	W-Series, Fuse terminal, Rated cross-section: 6 mm ² , Screw connection
GTIN (EAN)	4032248901104
Qty.	50 pc(s).

**W-Series
WSI 6/LD 250AC LLC**

Weidmüller Interface GmbH & Co. KG
 Klingenbergstraße 16
 D-32758 Detmold
 Germany
 Fon: +49 5231 14-0
 Fax: +49 5231 14-292083
 www.weidmueller.com

Technical data
Dimensions and weights

Length	60 mm	Width	7.9 mm
Height	71.5 mm	Height of lowest version	72 mm
Net weight	20.6 g		

Temperatures

Operating temperature		Storage temperature	
Continuous operating temp., min.	-50 °C	Continuous operating temp., max.	120 °C

Additional technical data

Explosion-tested version	No	Number of similar terminals	1
Open sides	right	Version	Screw connection, Fuse isolator, with LED, for screwable cross-connection, One end without connector

CSA ratings data

Certificate No. (CSA)	200039-1057876	Voltage size B (CSA)	250 V
Voltage size C (CSA)	250 V	Current size B (CSA)	6.3 A
Current size C (CSA)	6.3 A	Wire cross section max. (CSA)	8 AWG
Wire cross section min. (CSA)	20 AWG		

Clampable wires (rated connection)

Type of connection	Screw connection	Blade size	0.8 x 4.0 mm
Connection direction	on side	Number of connections	2
Clamping range, rated connection, min.	0.5 mm ²	Clamping range, rated connection, max.	10 mm ²
Clamping screw	M 3.5	Tightening torque, min.	0.8 Nm
Tightening torque, max.	1.6 Nm	Torque level with DMS electric screwdriver	3
Gauge to IEC 60947-1	A5	Wire connection cross section, solid core, max. rated connection	0.5 mm ²
Wire connection cross section, solid core max. rated connection	10 mm ²	Wire connection cross section, stranded, rated connection, min.	1.5 mm ²
Wire connection cross section, stranded, rated connection, max.	10 mm ²	Wire connection cross section, finely stranded, max.	10 mm ²
Wire connection cross-section, finely stranded, min.	0.5 mm ²	Wire connection cross section, finely stranded with wire-end ferrules DIN 46228/1, rated connection, min.	0.5 mm ²
Wire connection cross section, finely stranded with wire-end ferrules DIN 46228/1, rated connection, max.	6 mm ²	Cross-section for connected conductor, finely stranded with wire-end ferrules and plastic collars DIN 46228/4, rated connection, min.	0.5 mm ²
Wire connection cross-section, finely stranded with wire-end ferrules and plastic collars DIN 46228/4, rated connection, max.	6 mm ²	Wire connection cross section AWG, min.	AWG 20
Wire connection cross section AWG, max.	AWG 8		

Data sheet

W-Series WSI 6/LD 250AC LLC

Weidmüller Interface GmbH & Co. KG
 Klingenbergstraße 16
 D-32758 Detmold
 Germany
 Fon: +49 5231 14-0
 Fax: +49 5231 14-292083
 www.weidmueller.com

Technical data

Rated data

Rated cross-section	6 mm ²	Rated voltage to adjoining terminal	500 V
Rated current	6.3 A	Current at maximum wires	6.3 A
Standards	IEC 60947-7-3	Pollution severity	3

UL ratings data

Certificate No. (UR)	E60693	Voltage size B (UR)	600 V
Voltage size C (UR)	600 V	Current size B (UR)	10 A
Current size C (UR)	10 A	Wire cross section max. (UR)	8 AWG
Wire cross section min. (UR)	22 AWG	Conductor size Factory wiring max. (UR)	8 AWG
Conductor size Factory wiring min. (UR)	22 AWG	Conductor size Field wiring max. (UR)	8 AWG

Material data

Material	Wemid	Colour	Dark Beige
UL 94 flammability rating	V-0		

System specifications

Product family	W-Series	Type of connection	Screw connection
Connection direction	on side	Number of levels	1
Number of connections	2	No. of clamping points per level	2
Levels cross-connected internally	No	Mounting rail	TS 35
End cover plate required	Yes		

Display element

Type of voltage for indicator	AC
-------------------------------	----

Fuse terminals

Cartridge fuse	G-Si. 5 x 20	Display	red LED
Fuse holder (cartridge holder)	Pivoting	Operating voltage, max.	250 V
Type of voltage for indicator	AC		

Classifications

ETIM 3.0	EC000899	eClass 5.1	27-14-11-16
eClass 6.2	27-14-11-16	eClass 7.1	27-14-11-16

Product information

Descriptive text accessories	Markers only fit on one side.
------------------------------	-------------------------------

Approvals

Approvals



ROHS	Conform
------	---------

**W-Series
WSI 6/LD 250AC LLC**

Weidmüller Interface GmbH & Co. KG
 Klingenbergstraße 16
 D-32758 Detmold
 Germany
 Fon: +49 5231 14-0
 Fax: +49 5231 14-292083
 www.weidmueller.com

Accessories

WAP 2.5-10



The versatile and extensive range of products - from 0.05 mm² to 300 mm² - means that you have diverse options for your applications at your disposal. Hardened steel for mechanical strength and high-quality tinned copper for optimum conductivity. All materials comply with RoHS requirements and have been tested to current environment guidelines.

General ordering data

Type	Order No.	Version	GTIN (EAN)	Qty.
WAP 2.5-10	1050000000	W-Series, Accessories, End plate	4008190103149	50 pc(s).

KISC



Weidmüller offers users of modular terminals a comprehensive range of accessories that render possible appropriate solutions for all - even non-standard - tasks.

General ordering data

Type	Order No.	Version	GTIN (EAN)	Qty.
KISC M3X5	1052100000	Accessories, Fixing screw, for busbars, 5 mm	4008190125332	100 pc(s).

Blank



WS markers are the perfect match for the W-series connectors. Thanks to their system compatibility, the WS tags can also be used with the I-series and the Z-series. The large marking surfaces do not only permit long character strings but also multi-line text. WS markers are ideal for labels with long, customised character strings. Thanks to the proven MultiCard format, printing with laser printer, PrintJet ADVANCED, plotter or MC-Mobilo is possible.

- Can be fitted in strips or individually
- Markers in proven MultiCard format

General ordering data

Type	Order No.	Version	GTIN (EAN)	Qty.
WS 12/6.5 MC NE WS	1609920000	Terminal markers, MultiCard, 12 x 6.5 mm,	4008190203511	540 pc(s).

W-Series WSI 6/LD 250AC LLC

Weidmüller Interface GmbH & Co. KG
 Klingenbergstraße 16
 D-32758 Detmold
 Germany
 Fon: +49 5231 14-0
 Fax: +49 5231 14-292083
 www.weidmueller.com

Accessories

Polyamide 66, Colour:
White

cross-connection links



Some 60% of all modular terminals have a cross-connection.
 Weidmüller has a huge range of solutions on offer.

General ordering data

Type	Order No.	Version	GTIN (EAN)	Qty.
QL 2 SAK6N	0194300000	SAK Series, Accessories, Cross-connector, for cross-connection link, No. of poles: 2	4008190182854	50 pc(s).
QL 3 SAK6N	0194400000	SAK Series, Accessories, Cross-connector, for cross-connection link, No. of poles: 3	4008190063351	50 pc(s).
QL 10 SAK6N	0338300000	SAK Series, Accessories, Cross-connector, for cross-connection link, No. of poles: 10	4008190176679	20 pc(s).
QL 4 SAK6N	0194500000	SAK Series, Accessories, Cross-connector, for cross-connection link, No. of poles: 4	4008190025601	50 pc(s).

WAP 16+35 WTW 2.5-10



The versatile and extensive range of products - from 0.05 mm² to 300 mm² - means that you have diverse options for your applications at your disposal.
 Hardened steel for mechanical strength and high-quality tinned copper for optimum conductivity. All materials comply with RoHS requirements and have been tested to current environment guidelines.

General ordering data

Type	Order No.	Version	GTIN (EAN)	Qty.
WAP 16+35 WTW 2.5-10	1050100000	W-Series, Accessories, End plate, Partition plate	4008190079901	20 pc(s).

W-Series WSI 6/LD 250AC LLC

Weidmüller Interface GmbH & Co. KG
 Klingenbergstraße 16
 D-32758 Detmold
 Germany
 Fon: +49 5231 14-0
 Fax: +49 5231 14-292083
 www.weidmueller.com

Accessories

Screwdrivers



Always the right tools:

Weidmüller screwdrivers are the result of a consistent grip concept which takes into account both the human hand and the different requirements when working. The right blade for every screw - with four different handle sizes

The advantages are obvious:

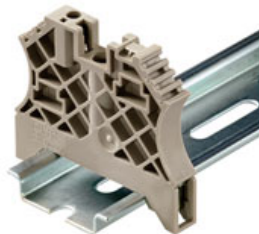
- User-friendly: ergonomic handle arrangement for effortless working progress
- Optimised connections: compatible blade and perfect handle size for maximum torque
- Reliable: even easier operation for even quicker wiring

The result: efficient, professional working progress.

General ordering data

Type	Order No.	Version	GTIN (EAN)	Qty.
SDS 0.8X4.0X100	9008340000	Screwdriver, Blade width (B): 4 mm, Blade length: 100 mm, Blade thickness (A): 0.8 mm	4032248056293	1 pc(s).

for TS 35 terminal rail



Weidmüller's range of products includes end brackets that guarantee a permanent, reliable mounting on the terminal rail and prevent sliding. Versions with and without screws are available. The end brackets include marking options, also for group markers, and also a test plug holder.

General ordering data

Type	Order No.	Version	GTIN (EAN)	Qty.
WEW 35/2	1061200000	Accessories, End bracket	4008190030230	100 pc(s).

W-Series WSI 6/LD 250AC LLC

Weidmüller Interface GmbH & Co. KG
 Klingenbergstraße 16
 D-32758 Detmold
 Germany
 Fon: +49 5231 14-0
 Fax: +49 5231 14-292083
 www.weidmueller.com

Accessories

Blank



The dekafix (DEK) marker is the universal marker for all conductor and plug-in connectors as well as for electronic sub-assemblies. The system is ideal for short number sequences and covers a large range of ready-printed markers.

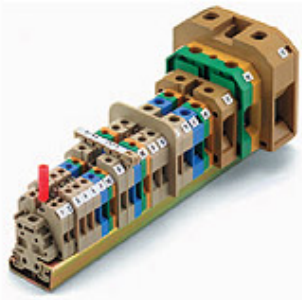
Strips for fast installation in one work step. The printing is easy to read, rich in contrast, and is available in five widths.

- Large range of ready-to-use markers
- Strips for fast installation
- Connector markers, suitable for all Weidmüller cable connectors
- Available as blank cards, MultiCard or as cards with standard printing

General ordering data

Type	Order No.	Version	GTIN (EAN)	Qty.
DEK 5/8 MC	1856740000	Terminal markers,	4032248400850	800 pc(s).
NE WS		MultiCard, 5 x 8 mm, Polyamide 66, Colour: White		

G 5x20 without indicator



Weidmüller offers users of modular terminals of the SAK Series a comprehensive range of accessories that render possible appropriate solutions for all - even non-standard - tasks.

General ordering data

Type	Order No.	Version	GTIN (EAN)	Qty.
G 20/2.00A/F	0430900000	Active components, Cartridge fuse	4008190123567	10 pc(s).
G 20/0.25A/F	0430500000	Active components, Cartridge fuse	4008190153991	10 pc(s).
G 20/0.50A/F	0430600000	Active components, Cartridge fuse	4008190046835	10 pc(s).