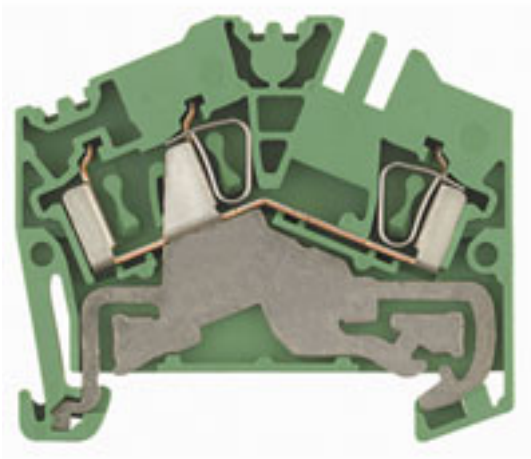


## Earth terminal ZPE 2.5-2

**Weidmüller Interface GmbH & Co. KG**  
 Klingenbergstraße 16  
 D-32758 Detmold  
 Germany  
 Fon: +49 5231 14-0  
 Fax: +49 5231 14-292083  
 www.weidmueller.com



Terminal blocks in tension clamp system and the Z Series are specially customised to the customers' requirements. Less space, spacious labelling area, integrated test point, cross-connection functionality within the Z Series and other Weidmüller terminal lines. Z-Series terminals have a large clamping range and one or two cross-connection slots.

### General ordering data

Type	ZPE 2.5-2
Order No.	<a href="#">1772090000</a>
Version	Earth terminal, PE terminal, Rated cross-section: Tension clamp connection, Wemid, green / yellow
GTIN (EAN)	4032248128730
Qty.	100 pc(s).

**Earth terminal  
ZPE 2.5-2**

**Weidmüller Interface GmbH & Co. KG**  
 Klingenbergstraße 16  
 D-32758 Detmold  
 Germany  
 Fon: +49 5231 14-0  
 Fax: +49 5231 14-292083  
 www.weidmueller.com

**Technical data**
**Dimensions and weights**

Length	50.5 mm	Width	5.1 mm
Height	43.5 mm	Height of lowest version	44 mm
Net weight	11.11 g		

**Temperatures**

Operating temperature		Storage temperature	
Continuous operating temp., min.	-50 °C	Continuous operating temp., max.	120 °C

**Rated data IECEx/ATEX**

Certificate No. (ATEX)	KEMA97ATEX4677U	ATEX certificate	KEMA97ATEX4677U_d.pdf
ATEX certificate	KEMA97ATEX4677U_e.pdf	Certificate No. (IECEX)	IECEXULD05.0009U
IEC Ex certificate	IECEXULD05.0009U_e.pdf	Wire cross section max. (ATEX)	2.5 mm <sup>2</sup>
Wire cross section max. (IECEX)	2.5 mm <sup>2</sup>	Voltage, cross-connection	CrossConnectionGuide.pdf
Operating temperature range	For operating temperature range see EC Design Test Certificate / IEC Ex-Certificate of Conformity	Marking EN 60079-7	
Marking ATEX Directive 94/9/EC	II 2 G D		Ex e II

**Additional technical data**

Explosion-tested version	Yes	Number of similar terminals	1
Open sides	right	Type of mounting	Snap-on
Version	Tension-clamp connection, With PE connection, One end without connector		

**CSA ratings data**

Certificate No. (CSA)	200039-1 152892	Wire cross section max. (CSA)	12 AWG
Wire cross section min. (CSA)	26 AWG		

**Clampable wires (additional connection)**

Conductor cross-section, flexible plus plastic collar DIN 46228/1, further connection, min.	0.5 mm <sup>2</sup>	Conductor cross-section, flexible plus plastic collar DIN 46228/1, further connection, max.	2.5 mm <sup>2</sup>
---	---------------------	---	---------------------

**Earth terminal  
ZPE 2.5-2**

**Weidmüller Interface GmbH & Co. KG**  
 Klingenbergstraße 16  
 D-32758 Detmold  
 Germany  
 Fon: +49 5231 14-0  
 Fax: +49 5231 14-292083  
 www.weidmueller.com

**Technical data**

**Clampable wires (rated connection)**

Type of connection	Tension clamp connection	Stripping length	10 mm
Blade size	0.6 x 3.5 mm	Connection direction	Inclined / angled
Number of connections	2	Clamping range, rated connection, min.	0.13 mm <sup>2</sup>
Clamping range, rated connection, max.	4 mm <sup>2</sup>	Gauge to IEC 60947-1	A2
Wire connection cross section, solid core, max. rated connection	0.5 mm <sup>2</sup>	Wire connection cross section, solid core max. rated connection	4 mm <sup>2</sup>
Wire connection cross section, finely stranded, max.	2.5 mm <sup>2</sup>	Wire connection cross-section, finely stranded, min.	0.5 mm <sup>2</sup>
Wire connection cross section, finely stranded with wire-end ferrules DIN 46228/1, rated connection, min.	0.5 mm <sup>2</sup>	Wire connection cross section, finely stranded with wire-end ferrules DIN 46228/1, rated connection, max.	2.5 mm <sup>2</sup>
Cross-section for connected conductor, finely stranded with wire-end ferrules and plastic collars DIN 46228/4, rated connection, min.	0.5 mm <sup>2</sup>	Wire connection cross-section, finely stranded with wire-end ferrules and plastic collars DIN 46228/4, rated connection, max.	1.5 mm <sup>2</sup>
Wire connection cross section AWG, min.	AWG 26	Wire connection cross section AWG, max.	AWG 12

**Rated data**

Rated voltage to adjoining terminal	800 V	Rated impulse withstand voltage to adjacent terminal	8 kV
Standards	IEC 60947-7-2	Pollution severity	3

**UL ratings data**

Certificate No. (UR)	E60693	Conductor size Factory wiring max. (UR)	12 AWG
Conductor size Factory wiring min. (UR)	26 AWG	Conductor size Field wiring max. (UR)	12 AWG

**Material data**

Insulating material	Wemid	Material	Wemid
Colour	Yellow, Green	UL 94 flammability rating	V-0

**System specifications**

Product family	Earth terminal	Type of connection	Tension clamp connection
Connection direction	Inclined / angled	Number of levels	1
Number of connections	2	No. of clamping points per level	2
Levels cross-connected internally	No	Mounting rail	TS 35
End cover plate required	Yes		

**Classifications**

ETIM 3.0	EC000901	UNSPSC	30-21-18-11
eClass 5.1	27-14-03-05	eClass 6.2	27-14-03-05
eClass 7.1	27-14-03-05		

**Product information**

Descriptive text technical data	2.5 mm <sup>2</sup> flexible wires with wire-end ferrules are crimped with the Weidmüller PZ 6/5 crimping tool.
---------------------------------	---

**Data sheet**

**Earth terminal  
ZPE 2.5-2**

**Weidmüller Interface GmbH & Co. KG**  
Klingenbergstraße 16  
D-32758 Detmold  
Germany  
Fon: +49 5231 14-0  
Fax: +49 5231 14-292083  
www.weidmueller.com

**Technical data**

**Approvals**

Approvals



ROHS

Conform

**Earth terminal  
ZPE 2.5-2**

**Weidmüller Interface GmbH & Co. KG**  
 Klingenbergstraße 16  
 D-32758 Detmold  
 Germany  
 Fon: +49 5231 14-0  
 Fax: +49 5231 14-292083  
 www.weidmueller.com

**Accessories**

**Blank**



The dekafix (DEK) marker is the universal marker for all conductor and plug-in connectors as well as for electronic sub-assemblies. The system is ideal for short number sequences and covers a large range of ready-printed markers.

Strips for fast installation in one work step. The printing is easy to read, rich in contrast, and is available in five widths.

- Large range of ready-to-use markers
- Strips for fast installation
- Connector markers, suitable for all Weidmüller cable connectors
- Available as blank cards, MultiCard or as cards with standard printing

**General ordering data**

Type	Order No.	Version	GTIN (EAN)	Qty.
DEK 5/5	<a href="#">1609801044</a>	Terminal markers,	4008190397111	1,000 pc(s).
MC-10 NE WS		MultiCard, 5 x 5 mm, Polyamide 66, Colour: White		

**ZTA 4**



Weidmüller offers users of modular terminals of the Z-Series a comprehensive range of accessories that render possible appropriate solutions for all - even non-standard - tasks.

The accessories must comply with the same quality standards as the modular terminals themselves.

**General ordering data**

Type	Order No.	Version	GTIN (EAN)	Qty.
ZTA 4	<a href="#">1688110000</a>	Test adapter, Rated control voltage:	4008190855666	25 pc(s).

## Earth terminal ZPE 2.5-2

**Weidmüller Interface GmbH & Co. KG**  
 Klingenbergstraße 16  
 D-32758 Detmold  
 Germany  
 Fon: +49 5231 14-0  
 Fax: +49 5231 14-292083  
 www.weidmueller.com

# Accessories

## STR transparent strips



The various connector markers from Weidmüller enable users to solve virtually every labelling task on all types of lines. Whether several lines of labelling, ready-to-use markers with standard printing, or individual labelling, whether white or coloured markers or common designations at the clamping points, the comprehensive range of products represent the easy, quick and clear answer to every marking task.

### General ordering data

Type	Order No.	Version	GTIN (EAN)	Qty.
STR 7 F.SCHT	<a href="#">0515300000</a>	Terminal markers, 27 x 6.3 mm, Polyester, PVC-free, Colour: Transparent	4008190182175	20 pc(s).

## Blank



WS markers are the perfect match for the W-series connectors. Thanks to their system compatibility, the WS tags can also be used with the I-series and the Z-series. The large marking surfaces do not only permit long character strings but also multi-line text. WS markers are ideal for labels with long, customised character strings. Thanks to the proven MultiCard format, printing with laser printer, PrintJet ADVANCED, plotter or MC-Mobilo is possible.

- Can be fitted in strips or individually
- Markers in proven MultiCard format

### General ordering data

Type	Order No.	Version	GTIN (EAN)	Qty.
WS 14/5 MC NE WS	<a href="#">1768090000</a>	Terminal markers, MultiCard, 14 x 5 mm, Polyamide 66, Colour: White	4032248106271	480 pc(s).

## Earth terminal ZPE 2.5-2

**Weidmüller Interface GmbH & Co. KG**  
 Klingenbergstraße 16  
 D-32758 Detmold  
 Germany  
 Fon: +49 5231 14-0  
 Fax: +49 5231 14-292083  
 www.weidmueller.com

# Accessories

## ZGB pivotable group tag holder



The ZGB 15 is a hinged group tag carrier. The tag carrier can hold the dekafix 5, WS 12/5 connector markers or the inlay tag ESO 15.

The ZGB 30 is a hinged group tag carrier. The tag carrier can hold the dekafix 5, WS 12/5 connector markers or the inlay tag ESO 7.

Inlay tags and protective strips can be found under "Accessories".

### General ordering data

Type	Order No.	Version	GTIN (EAN)	Qty.
ZGB 30/3.5	<a href="#">1778290000</a>	Group marker, Terminal markers, 32 x 7 mm, Polyamide 66, Colour: White	4032248161065	20 pc(s).
ZGB 15	<a href="#">1636530000</a>	Group marker, Terminal markers, 15 x 7 mm, Polyamide 66, Colour: White	4008190297053	20 pc(s).
ZGB 30	<a href="#">1611930000</a>	Group marker, Terminal markers, 32 x 7 mm, Polyamide 66, Colour: White	4008190002251	20 pc(s).

## Blank



ZS markers - in proven MultiCard-format - have been developed specifically for the Z-series. They have a large printing area. The hinged mechanism even allows access to cross-connectors without dismantling. Quick installation is guaranteed by the fact that the single tags are clipped on in strips. The single tags are easy to separate.

- Hinged marker area
- Can be fitted in strips or individually
- Markers in proven MultiCard format

### General ordering data

Type	Order No.	Version	GTIN (EAN)	Qty.
ZS 10/5 MC NE WS	<a href="#">1610000000</a>	Terminal markers, MultiCard, 10 x 5 mm, Polyamide 66, Colour: White	4008190263171	480 pc(s).

## Earth terminal ZPE 2.5-2

**Weidmüller Interface GmbH & Co. KG**  
 Klingenbergstraße 16  
 D-32758 Detmold  
 Germany  
 Fon: +49 5231 14-0  
 Fax: +49 5231 14-292083  
 www.weidmueller.com

# Accessories

## ZAP/TW 7



Weidmüller offers users of modular terminals of the Z-Series a comprehensive range of accessories that render possible appropriate solutions for all - even non-standard - tasks.

The accessories must comply with the same quality standards as the modular terminals themselves.

### General ordering data

Type	Order No.	Version	GTIN (EAN)	Qty.
ZAP/TW7 BL	<a href="#">1706120000</a>	Z-series, End plate, Partition	4008190915469	50 pc(s).
		plate		
ZAP/TW7	<a href="#">1706110000</a>	Z-series, End plate, Partition	4008190915452	50 pc(s).
		plate		
ZAP/TW7 OR	<a href="#">1706130000</a>	Z-series, End plate, Partition	4008190915476	50 pc(s).
		plate		

## Screwdrivers



### Always the right tools:

Weidmüller screwdrivers are the result of a consistent grip concept which takes into account both the human hand and the different requirements when working. The right blade for every screw - with four different handle sizes

The advantages are obvious:

- User-friendly: ergonomic handle arrangement for effortless working progress
- Optimised connections: compatible blade and perfect handle size for maximum torque
- Reliable: even easier operation for even quicker wiring

The result: efficient, professional working progress.

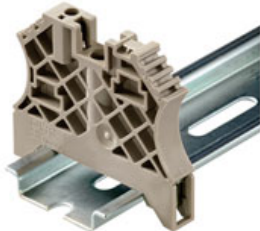
### General ordering data

Type	Order No.	Version	GTIN (EAN)	Qty.
SDS 0.6X3.5X100	<a href="#">9008330000</a>	Screwdriver, Blade width (B): 3.5 mm, Blade length: 100 mm, Blade thickness (A): 0.6 mm	4032248056286	1 pc(s).



**Earth terminal  
ZPE 2.5-2**

**Weidmüller Interface GmbH & Co. KG**  
 Klingenbergstraße 16  
 D-32758 Detmold  
 Germany  
 Fon: +49 5231 14-0  
 Fax: +49 5231 14-292083  
 www.weidmueller.com

**Accessories**
**for TS 35 terminal rail**


Weidmüller's range of products includes end brackets that guarantee a permanent, reliable mounting on the terminal rail and prevent sliding. Versions with and without screws are available. The end brackets include marking options, also for group markers, and also a test plug holder.

**General ordering data**

Type	Order No.	Version	GTIN (EAN)	Qty.
EW 35 GR 7032	<a href="#">0383530000</a>	Accessories, End bracket	4008190027322	50 pc(s).
ZEW 35/2	<a href="#">8630740000</a>	Accessories, End bracket	4032248348916	20 pc(s).
EW 35	<a href="#">0383560000</a>	Accessories, End bracket	4008190181314	50 pc(s).
ZEW 35	<a href="#">9540000000</a>	Accessories, End bracket	4008190956264	20 pc(s).
WEW 35/2	<a href="#">1061200000</a>	Accessories, End bracket	4008190030230	100 pc(s).
WEW 35/1	<a href="#">1059000000</a>	Accessories, End bracket	4008190172282	50 pc(s).
EW 35/ SCHA/M3	<a href="#">0258660000</a>	Accessories, End bracket	4008190033477	20 pc(s).