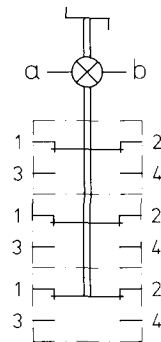
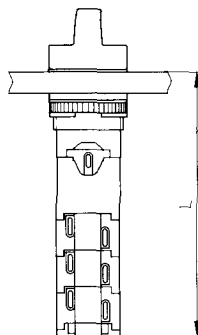
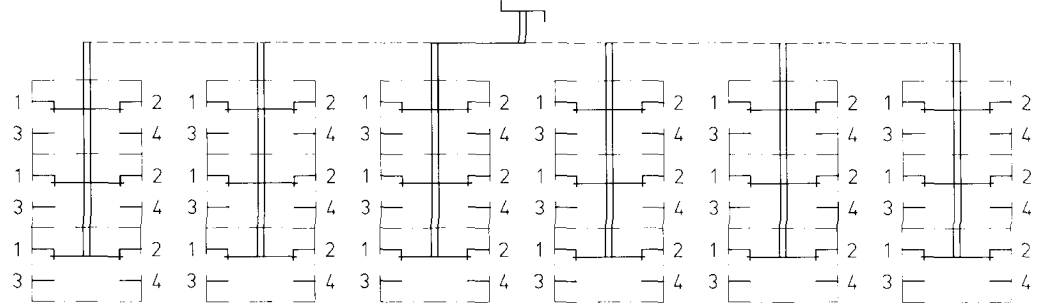
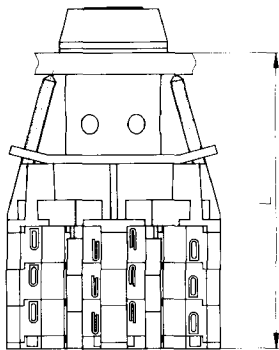
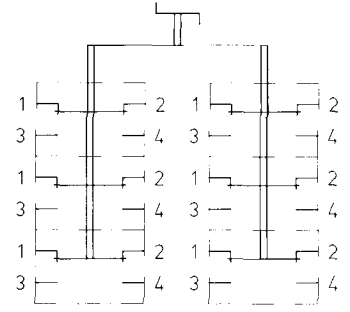
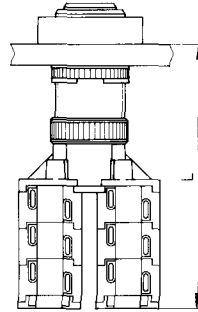
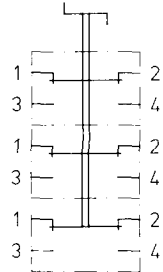
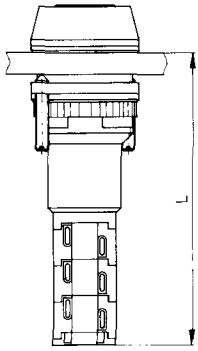
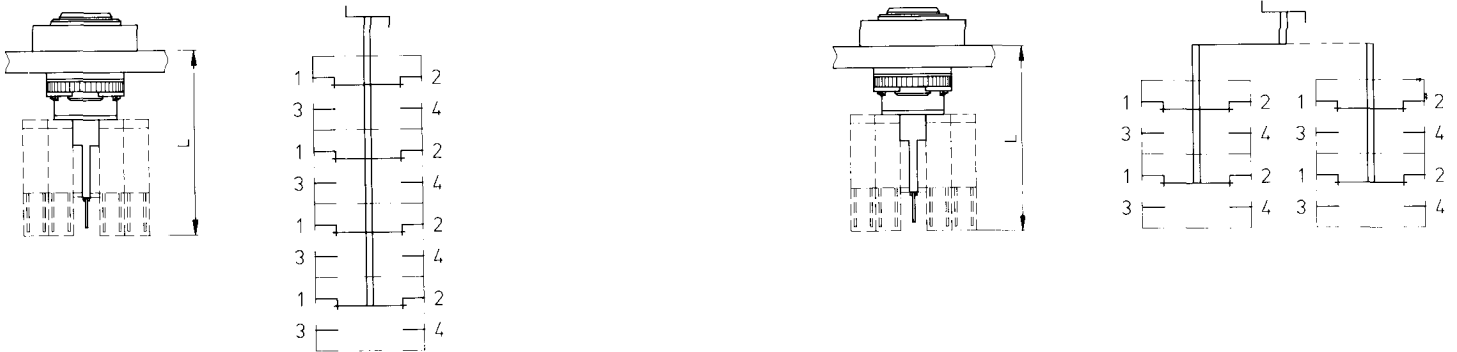


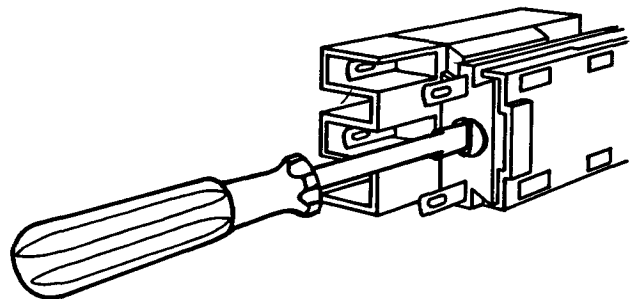
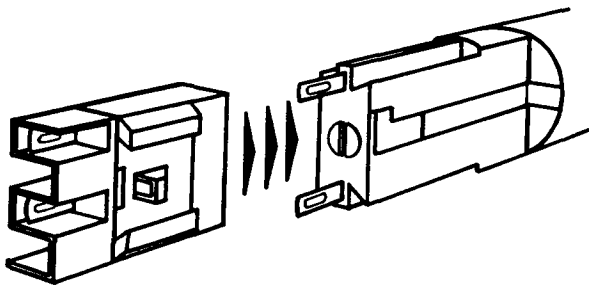
th4



th25



Assembly of the th25 contact blocks



*Turn the slot of the red locking pin parallel to the dovetail of the switch body and slide the contact block onto the dovetail.*

*When the switch is in „off“ position the contact block must be pushed firmly into position and held there. Secure by turning the red locking pin a quarter turn in a clockwise direction with a suitable screwdriver.*