

Logic Plus
Filtered Sockets

1:2



Logic Plus™ Filtered Sockets

PRODUCT RANGE	
13A 2 gang, double pole switchsocket with spike/transient x RFI filter	K1826 WHI
13A 2 gang, double pole switchsocket with spike/transient filter	K1816 WHI
Replacement spike/transient cassette for use with K1816/K1826	K1800 WHI
As K1826 with tamperproof screw on filter cassette	K1826 KO WHI
As K1816 with tamperproof screw on filter cassette	K1816 KO WHI

Description

A range of sockets in the Logic Plus style, designed to combat interference to or data losses on sensitive electrical products and systems due to mains borne voltage spikes and RFI.

Such systems include:

- Computer or microprocessor based equipment
- Telecommunications systems
- Electronic measurement equipment
- Cash registers
- Audio visual and hi-fi equipment

These products can be quickly installed as replacements for existing twin 13 amp sockets or in a new installation.

Two earth terminals on each product enable use in installations complying with regulation 607 (High Integrity Earthing) of BS 7671 IEC Wiring Regulations.

Filter cassettes

Filter cassettes are supplied with sockets and have an LED which shows green under normal conditions but will turn red or extinguish when a replacement cassette (K1800) is required. An alarm will also beep at 5 second intervals to indicate replacement necessity. It can be de-activated if required.

Features

- Moulded 'on' indicator flash on switches will not rub off – totally safe
- 3 pin operated safety shutter
- White printed terminal markings on grey rear mouldings for clearer identification
- Reduces risk of damage to equipment and down time
- Reduces risk of data loss
- 2 way filtering – into appliance and back into mains supply
- Double pole switches
- Twin earth terminals for use in installations complying with regulation 607 of BS 7671 IEE Wiring Regulations
- All components clearly printed with BS Nos, ratings, instructions, etc
- Clearly visible LED on filter cassette, changes from green to red when replacement required
- Simple replacement of cassettes
- 10 year guarantee (except filter cassette)
- 3mm switch contact gap
- Backed out and captive terminal screws



Logic Plus
Filtered Sockets

2:2



TECHNICAL SPECIFICATION

Electrical

Current rating:
13A maximum total for 2 sockets

Voltage rating:
250V a.c. 50Hz

Earth leakage:
0.5 mA

Suppression:
150 kHz – 30 MHz (transients)

Maximum energy absorption:
140 Joules L – N
140 Joules L – E

Terminal capacity:
K1826 and K1816, 2 x 6mm²
3 x 4mm², 3 x 2.5mm², 3 x 1.5mm²

Physical

Operating temperature:
-5°C to +40°C (not to exceed an average of more than 25°C in any 24 hour period)

Thermal overload:
The K1826 filter socket incorporates a thermal overload device in the RFI filter section. Overload current causes temperature rise, resulting in automatic 'trip out'. The overload device will re-set as the temperature falls.

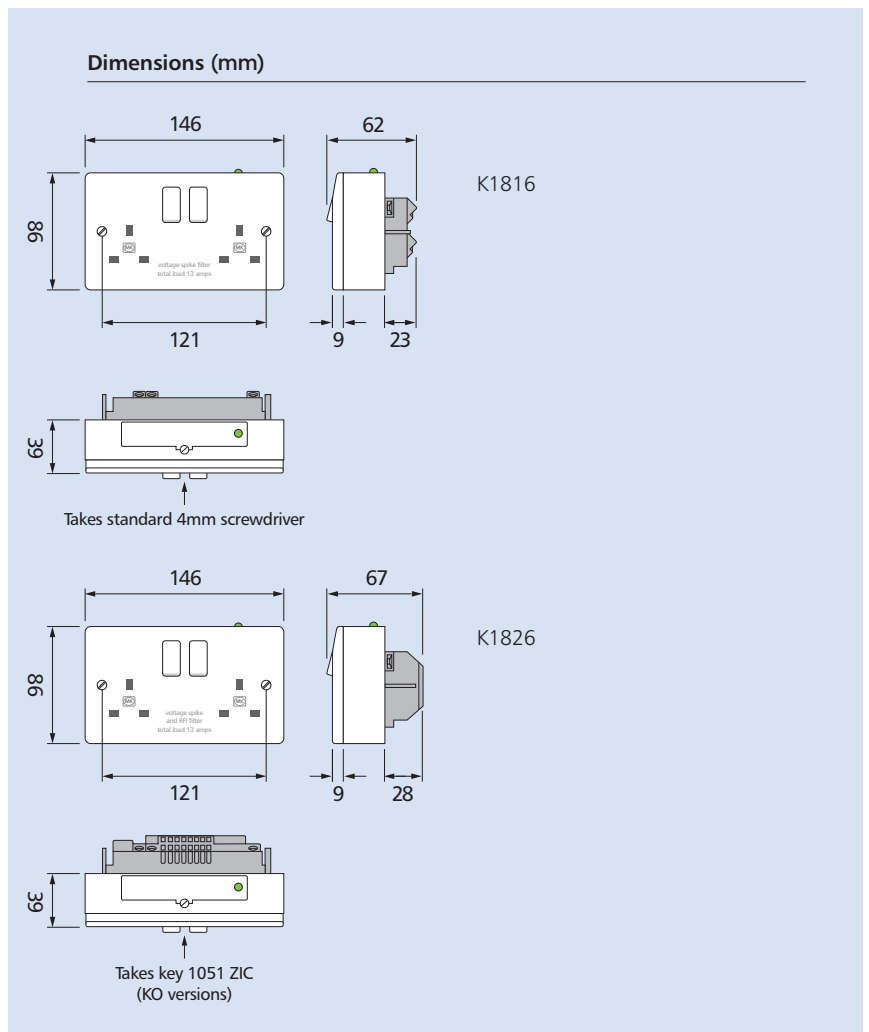
IP rating:
IP4X

Max. installation altitude:
2000 metres

Cable Management

Logic Plus filtered sockets can be mounted in a variety of MK trunking systems.

See MK catalogue for further details.



Box types

Ref	Box type	List No.
K1826 WHI	Flush 35mm	886 ZIC
K1816 WHI	Flush 25mm	862 ZIC

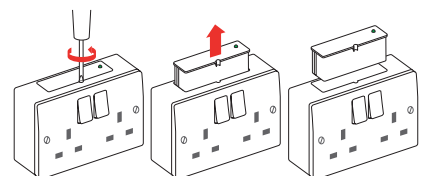
Installation

Logic Plus filtered sockets can be wall or bench mounted. Do not mount or use as a trailing socket or where it may be subjected to excessive moisture or dampness.

Disconnected filtered sockets prior to 'Megger' (installation) testing.

Replacement of filter cassette K1800

This can be effected without switching off or removal of plugs from filter socket.



High integrity earthing

K1826 and K1816 incorporate 2 earth terminals each capable of taking 2 x 6mm stranded cables, for use when installations are to comply with Regulation 607 of BS 7671 (16th Edition IEE Wiring Regulations 1991 and amendments December 1994).

