

The ECS-2100X Series clock oscillator offers low current drain and is compatible with HCMOS/TTL logic. The metal package with pin #4 case ground acts as a shielding to minimize radiation.

## OPERATING CONDITIONS / ELECTRICAL CHARACTERISTICS



- HCMOS/TTL logic compatible
- Wide frequency range
- Low power consumption
- Resistance weld package
- 3.3V operation (optional)
- PbFree/RoHS Compliant

Parameters	Frequency Range	Conditions	MIN	TYP	MAX	Units
Frequency (F <sub>o</sub> )	1.000 ~ 150.000		1.000		150.000	MHz
Operating Temperature Range (T <sub>opr</sub> )	1.000 ~ 150.000		0		+70	°C
Storage Temperature Range (T <sub>stg</sub> )	1.000 ~ 150.000		-55		+125	°C
Frequency Stability	1.000 ~ 150.000	All Conditions*	-100		+100	PPM
Input Current (I <sub>DD</sub> )	1.000 ~ 25.000			17	25	mA
	25.000 ~ 50.000			33	46	mA
	50.000 ~ 80.000			45	77	mA
	80.000 ~ 150.000			67	82	mA
Output Symmetry	1.000 ~ 80.000	50% V <sub>DD</sub> level	45	50 ± 3	55	%
	80.000 ~ 150.000	50% V <sub>DD</sub> level	40	50 ± 3	60	%
Rise Time (T <sub>r</sub> )	1.000 ~ 150.000	10% ~ 90% V <sub>DD</sub> level			5	nS
Fall Time (T <sub>f</sub> )	1.000 ~ 150.000	90% ~ 10% V <sub>DD</sub> level			5	nS
Output Voltage (V <sub>OL</sub> ) (V <sub>OH</sub> )	1.000 ~ 150.000	I <sub>OL</sub> = 16 mA			0.5	V
	1.000 ~ 150.000	I <sub>OH</sub> = -16 mA	4.5			V
Output Current (I <sub>OL</sub> ) (I <sub>OH</sub> )	1.000 ~ 150.000	V <sub>OL</sub> = 0.5V			16	mA
	1.000 ~ 150.000	V <sub>OH</sub> = 4.5V			-16	mA
Output Load	1.000 ~ 150.000	TTL			10	TTL
	1.000 ~ 80.000	HCMOS			50	pF
	80.000 ~ 150.000	HCMOS			30	pF
Start-Up Time (T <sub>s</sub> )	1.000 ~ 150.000	0.0V to 5.0V			10	mS
Supply Voltage (V <sub>DC</sub> )			+4.75	+5.0	+5.25	V <sub>DC</sub>

\* Inclusive of 25°C tolerance, operating temperature range, input voltage change, load change, aging, shock and vibration.

### Part Numbering Guide: Example ECS-2100AX-100

ECS - Series - Stability - Frequency Abbreviations

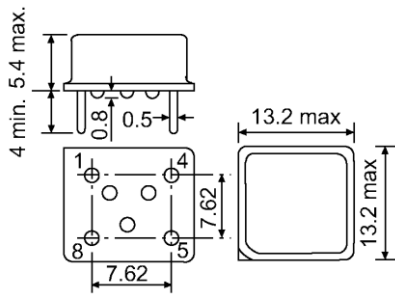
ECS

2100  
+5V HCMOS/TTL  
Half Size

AX = ±100 PPM  
BX = ±50 PPM  
CX = ±25 PPM

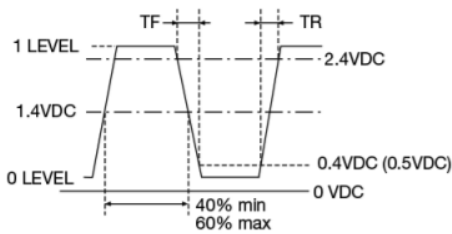
100 = 10.000 MHz

**Package Dimensions (mm)**

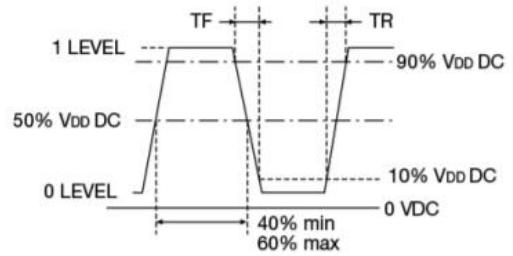


**Figure 1)** Side, Bottom, and Top views

Pin Connections	
#1	NC
#4	GROUND
#5	Output
#8	+5V DC



**Figure 2)** TTL Output Wave Form



**Figure 3)** HCMOS Output Wave Form

# Mouser Electronics

Authorized Distributor

Click to View Pricing, Inventory, Delivery & Lifecycle Information:

## [ECS:](#)

[ECS-2100AX-200](#) [ECS-2100AX-9.8304MHZ](#) [ECS-2100AX-10.0MHZ](#) [ECS-2100AX-4.0MHZ](#) [ECS-2100AX-6.144MHZ](#)  
[ECS-2100AX-11.0592MHZ](#) [ECS-2100AX-19.6608MHZ](#) [ECS-2100AX-1.8432MHZ](#) [ECS-2100AX-16.257MHZ](#) [ECS-2100AX-25.0MHZ](#) [ECS-2100AX-5.0688MHZ](#) [ECS-2100AX-16.0MHZ](#) [ECS-2100AX-8.0MHZ](#) [ECS-2100AX-1.2288MHZ](#)  
[ECS-2100AX-14.31818MHZ](#) [ECS-2100AX-28.322MHZ](#) [ECS-2100AX-64.0MHZ](#) [ECS-2100AX-32.0MHZ](#) [ECS-2100AX-3.6864MHZ](#) [ECS-2100AX-30.0MHZ](#) [ECS-2100AX-9.216MHZ](#) [ECS-2100AX-2.0MHZ](#) [ECS-2100AX-14.7456MHZ](#) [ECS-2100AX-1.0MHZ](#) [ECS-2100AX-3.579545MHZ](#) [ECS-2100AX-40.0MHZ](#) [ECS-2100AX-12.0MHZ](#) [ECS-2100AX-18.0MHZ](#) [ECS-2100AX-18.432MHZ](#) [ECS-2100AX-6.0MHZ](#) [ECS-2100AX-66.666MHZ](#) [ECS-2100AX-073.7](#) [ECS-2100AX-196.6](#) [ECS-2100AX-480](#) [ECS-2100AX-283.2](#) [ECS-2100AX-098.3](#) [ECS-2100AX-049](#) [ECS-2100AX-147.4](#) [ECS-2100AX-500](#) [ECS-2200BX-160](#) [ECS-2200BX-049](#) [ECS-2200BX-098](#) [ECS-2200BX-500](#) [ECS-2200BX-080](#) [ECS-2200BX-200](#) [ECS-2200BX-073](#) [ECS-2200BX-060](#) [ECS-2200BX-320](#) [ECS-2200BX-196](#) [ECS-2200BX-100](#) [ECS-2200BX-400](#) [ECS-2200BX-480](#) [ECS-2200BX-240](#) [ECS-2200BX-110.5](#) [ECS-2200BX-800](#) [ECS-2100AX-092.1](#) [ECS-2100AX-160](#) [ECS-2100AX-110.5](#) [ECS-2100AX-040](#) [ECS-2100AX-080](#) [ECS-2100AX-400](#) [ECS-2100AX-036](#) [ECS-2100AX-100](#) [ECS-2100AX-300](#) [ECS-2100AX-120](#)