

# IRC series

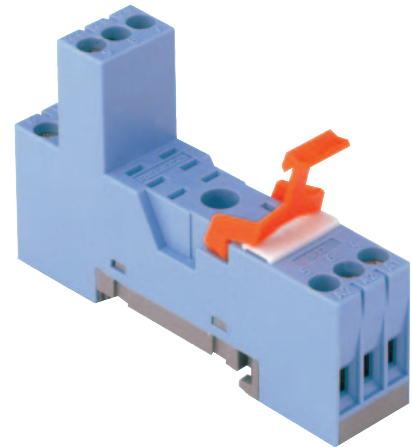
## S12

### Socket for Interface relay

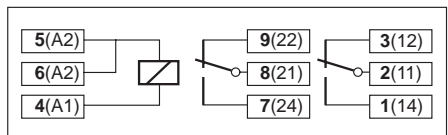
<b>Type</b>	<b>S12</b> I/O socket for IRC relays with 2 x CO Logic connection , 5 A
<b>Rated current</b>	<b>5 A</b>
<b>Specifications</b>	
Rated load	5 A/250 V
Insulation	Test voltage V rms 1 min
- All terminals/DIN rail	5 kV
- Terminal/terminal	5 kV
Cross-section of connecting wire	
- Single-wire	4 mm <sup>2</sup> or 2 x 2,5 mm <sup>2</sup>
- Multi-wire	22 - 14 AWG
Max. screw torque	1,2 Nm
Screw dimensions	M3, Pozi, slot
Integrated retaining clip/plastic	for relay series C12
Labelling space	detachable
Connection label	1...6; DIN/EN
Mounting	DIN rail TS35 or mounting plate
Ambient temperature operation/storage	-40 (no ice)...60 °C /-40 ... 80 °C

<b>Socket for IRC relays</b>	<b>C12, C12G</b>
------------------------------	------------------

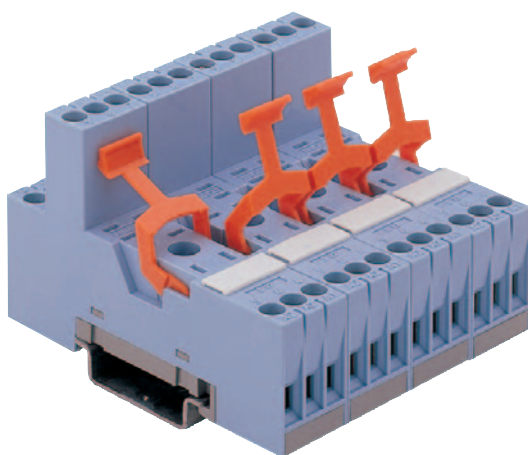
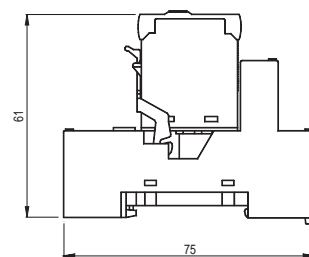
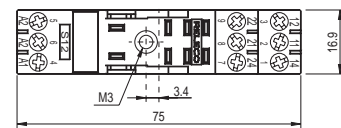
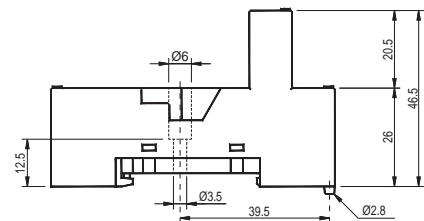
<b>Accessories</b>	
Coil bridge bars	<b>V10-G, V10-E</b> <b>V10-R</b> <b>V10-A</b> <b>B20-G, B20-R</b> <b>B20-A</b>



#### Connection diagram



#### Dimensions [mm]



#### Technical approvals, conformities

