

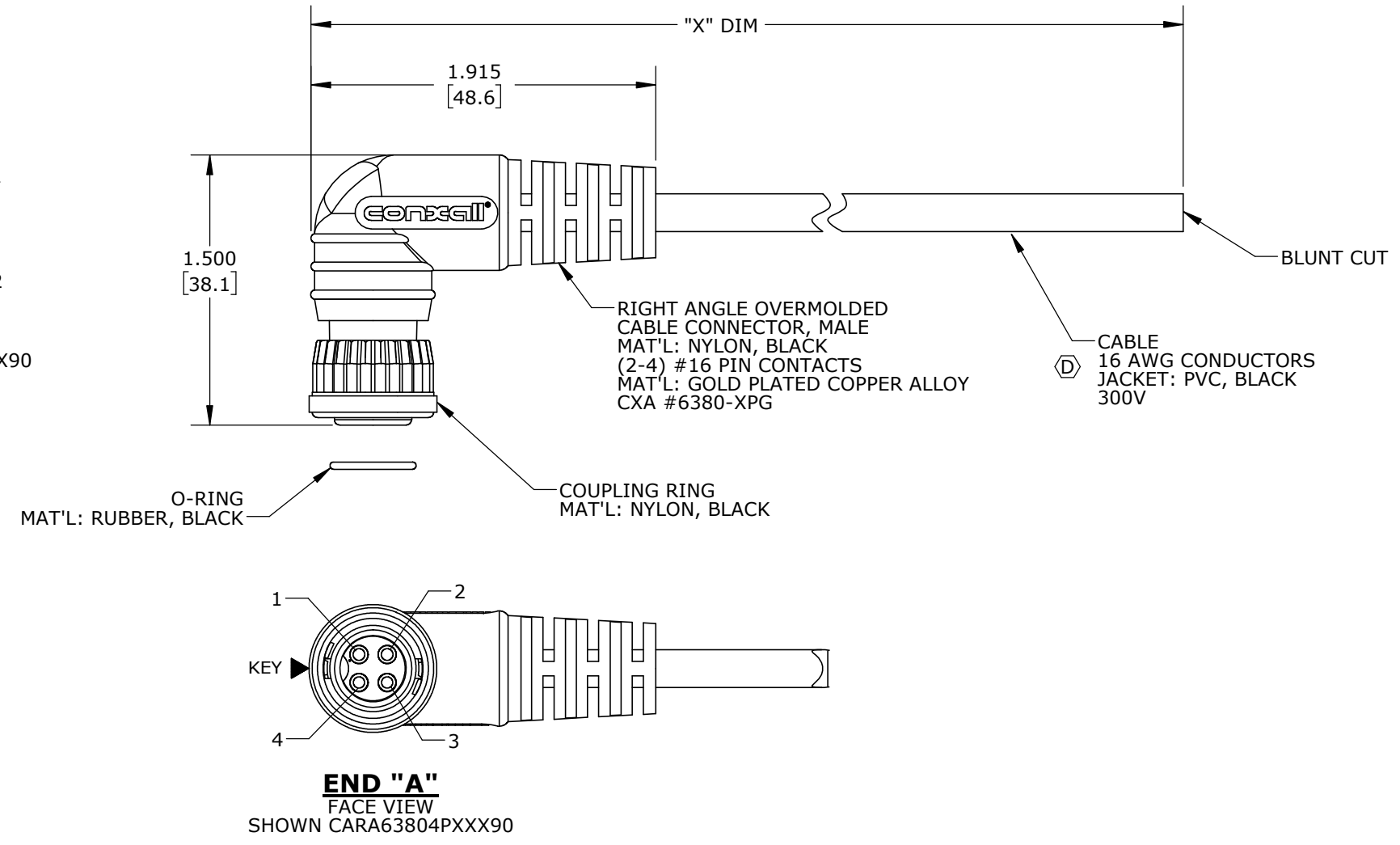
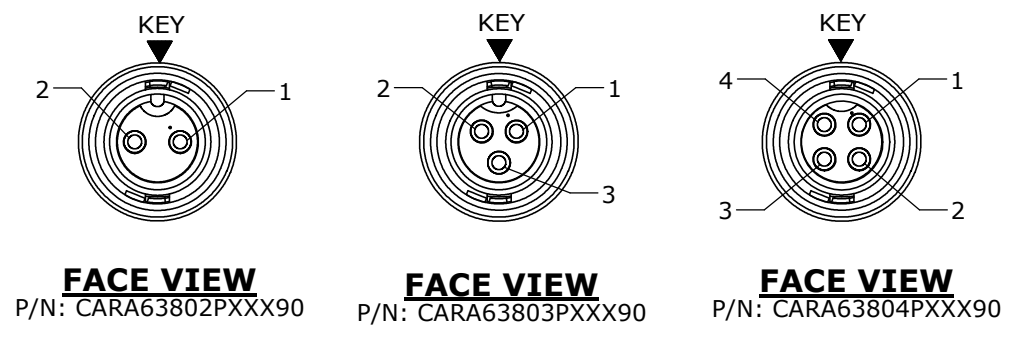
CUSTOMER PRINT

PART NUMBER: CARA6380XPXXX90

ASS'Y P/N	NO. OF POS.	"X" DIM.
CARA63802P07990	2	6 FT. 7 IN. ±2 IN. [2M]
CARA63803P07990	3	
CARA63804P07990	4	
CARA6380XPXXX90		

- NOTES:**
1. FINISHED CABLE ASSEMBLY TO BE COILED
 2. OVERMOLD BOOT MATERIAL: PVC, BLACK
 3. ELECTRICAL TEST: 100% CONTINUITY
 4. ALL DIMENSIONS ARE REFERENCE EXCEPT THOSE WITH A TOLERANCE

— CABLE LENGTH IN "INCHES"
 — NO OF POSITIONS



ASSY P/N	CABLE	COLOR CODE END "A"			
CARA63802PXXX90	2/16 AWG O.D. 0.270 REF	COLOR CODE			
		POS. 1	POS. 2		
		BLK	WHT		
CARA63803PXXX90	3/16 AWG O.D. 0.275 REF	WIRE COLOR CODE			
		POS. 1	POS. 2	POS. 3	
		BLK	WHT	GRN	
CARA63804PXXX90	4/16 AWG O.D. 0.300 REF	WIRE COLOR CODE			
		POS. 1	POS. 2	POS. 3	POS. 4
		BLK	WHT	GRN	RED

DIMENSIONS IN BRACKET [] ARE METRIC.

CUSTOMER APPROVAL

THIS DOCUMENT CONTAINS CONFIDENTIAL INFORMATION PROPRIETARY TO CONXALL CORPORATION. ANY REPRODUCTION, DISCLOSURE, OR USE OF THIS DOCUMENT /INFORMATION IS EXPRESSLY PROHIBITED UNLESS AUTHORIZED IN WRITING BY CONXALL CORPORATION.

APPROVED BY: _____
 DATE: _____

RoHS COMPLIANT

REV.	INIT.	DATE	DESCRIPTION
D	AN	12-22-20	CHANGED CABLES FROM 20 AWG TO 16 AWG, UPDATED CABLE'S P/N AND O.D. PER ECR 9556
C	BDS	01-04-18	CNG OVERMOLD TO FLEX STYLE PER DOR 15-6865CS-1 AND ECR 9250
B	AN	10-28-16	UPDATED MANUFACTURING DRAWING PER ECR 9122
A	AN	06-23-16	DRAWING CREATED PER DOR 16-7414JP

<small>ALL INFORMATION ILLUSTRATED IS THE PROPERTY OF "CONXALL CORPORATION". UNAUTHORIZED DUPLICATION OR DISTRIBUTION OF THIS DOCUMENT IS PROHIBITED.</small> <small>ALL UNITS ARE IN FEET, INCHES, FRACTION OF INCHES AND DECIMALS.</small>	ORIG. DRAWN BY: AN DATE: 05-25-16 CHECKED BY: APPROVED BY:	 601 E. WILDWOOD VILLA PARK, IL 60181 TITLE: CABLE ASSEMBLY (2-4) #16 PIN CONTACTS MINI-CON-X, R. ANGLE STANDARD PRODUCT CUSTOMER:
<small>* CRITICAL CHARACTERISTIC FLAG PER SPEC. XXXX</small>	SCALE: NTS SIZE: B SHEET: 1 OF 1 FILE: CARA6380XPXXX90 DIRECTORY: SLW	PART NUMBER: CARA6380XPXXX90 REV: D