

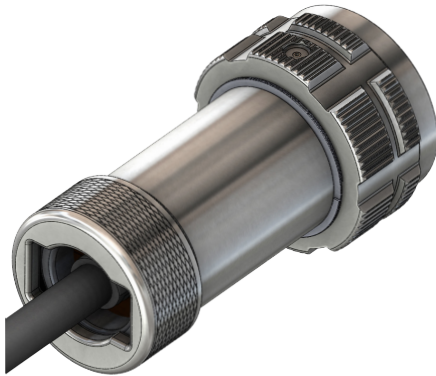


HDMI 2.0 CONNECTORS MIL-DTL-38999 Series III Type Connectors

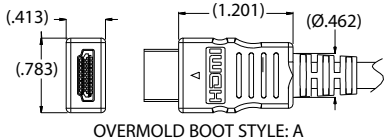
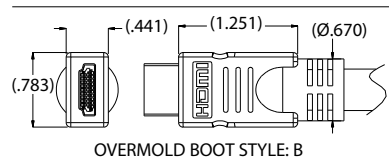
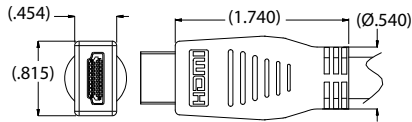


233-368 Plug, accepts HDMI Plug

N



Part Number Development							
Sample Part Number	233-368	NF	G6	A	17	N	H
Basic Number	233-368						
Finish	See Material and Finish table						
Connector Style ¹	G6 = Plug						
Overmold Style	A, B, C						
Shell Size	17						
Alternate Key Position ¹	A, B, C, D, E, N = Normal per MIL-DTL-38999						
HDMI Orientation	H = Horizontal V = Vertical						

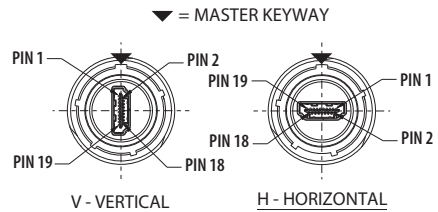


Material and Finish	
NF	Aluminum/Cadmium, Olive Drab (500 hour salt spray)
ME	Aluminum/Electroless Nickel
MT	Aluminum/Nickel PTFE
ZR	Aluminum/Black Zinc-Nickel (Tri-valent CR)
AB	Marine Bronze
XM	Composite/Electroless Nickel

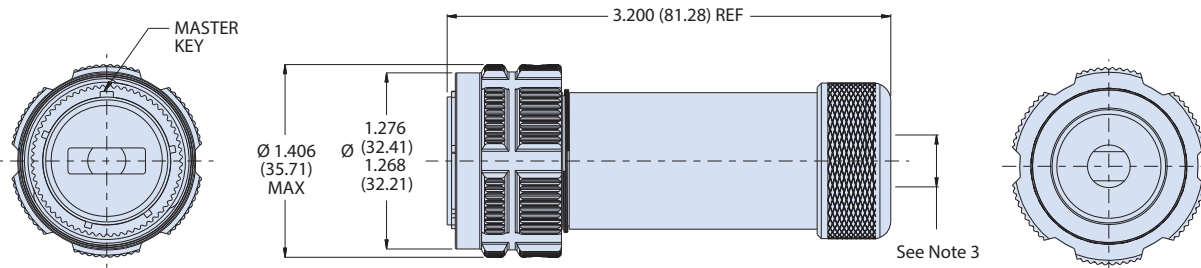
Additional material / finish options available consult factory

All external dimensions, features, etc. compliant with D38999/20, /24, &/26. Consult factory for additional information.

HDMI 2 FEMALE ORIENTATION OPTIONS (PARTIAL FRONT VIEWS SHOWN)



G6 - PLUG



NOTES

- See Section A for alternate key/keyway positions and panel cutout dimensions
- Meets IP67 in unmated condition, IP68 mated
- Design accommodates cable outside diameter .280 (7.112) nominal
- Accommodates HDMI patch cords with standard plug interface
- Material and Finish
 - Shell, jam nut: see material finish table
 - Seals: silicone based elastomer
 - Hardware: stainless steel/passivated
- HDMI:
 - Housing: thermoplastic/NA
 - Shell: copper alloy nickel plated
 - Terminal: copper alloy/gold plated

Mouser Electronics

Authorized Distributor

Click to View Pricing, Inventory, Delivery & Lifecycle Information:

[Glenair:](#)

[233-368NFG6-17NH](#) [233-368MEG6A17NH](#)