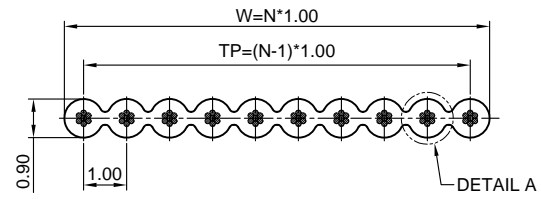


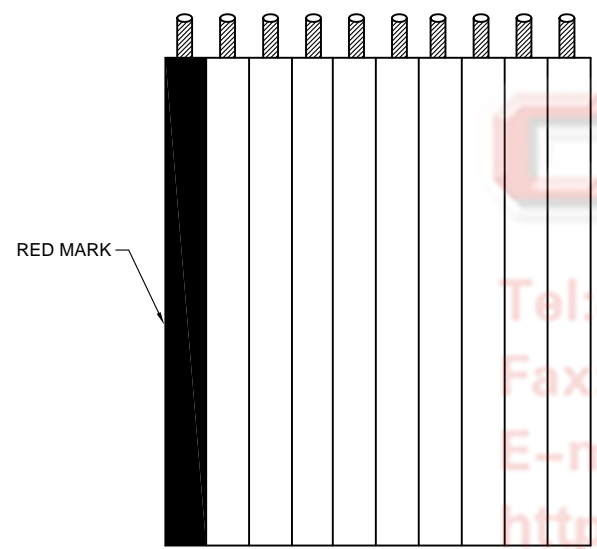
Dept	
Qty	
DC	1
ED	1
IE	1
ISO	1
PD	1
R&D	1
SD	1
QA	1
QC	1
QE	1

REV.	DESCRIPTION	DRAWN	CHECKED	APPROVED
A	NEW RELEASE	YCH 08/18/07		LJC 08/18/07
D	DRAWING UPDATE	JLZ 05/22/19'		

The information provided herein is from CONNFLY Electronic Co., Ltd. and is confidential. Any disclosure to a party other than the recipient is prohibited. The intellectual properties and its rights contained herein, including but not limited to, trademarks, patents, copyrights, trade secrets, and technical know-how, are owned exclusively by CONNFLY or its affiliates. Unauthorized use, reproduction, or distribution of this information without the prior written consent of CONNFLY is strictly prohibited. CONNFLY may enforce its intellectual property rights at its own discretion, failures or delays to exercise such rights does not constitute a waiver of such rights.



N= Positions



NOTES:

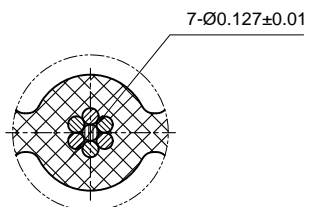
- Insulation material: PVC
Color: Grey or dark grey
- SPECIFICATION**
 - Rating: 300V
 - Conductor Size: 28~30AWG
 - Insulation resistance: 100MΩ/km min.
 - Operating temperature:-20°C~70°C.
- APPLICATION**
 - Internal wiring of computers, electronic exchanges, measurement control devices, business machines, communication devices, and other electronic equipment.

4. Product Number Code

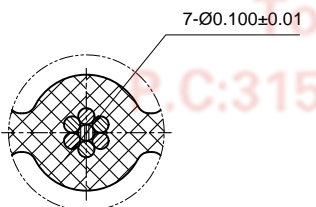
DS1057-01 - X X X X - X

- Packing Specifications
 - 30.5: 30.5M/reel
 - 60.1: 60.1M/reel
 - 76.5: 76.5M/reel
- Edge mark
 - R: Red mark
 - F: Flower mark
- Wire diameter
 - 1: Ø0.100 (30AWG)
 - 2: Ø0.127 (28AWG)
- Wire AWG
 - 28: 28AWG
 - 30: 30AWG
- Cable color
 - A: Gray
 - S: Dark grey
- No. Of positions
 - 10: 10pin
 - 64: 64pin

Number	Dimensions			Max. conductor resistance DC 20°C Ω/m
	TP(mm)	W(mm)	Tolerance	
10	9.00	10.00	±0.30	Ø0.100<0.397 Ø0.127<0.237
14	13.00	14.00	±0.30	
16	15.00	16.00	±0.30	
20	19.00	20.00	±0.30	
24	23.00	24.00	±0.30	
26	25.00	26.00	±0.30	
30	29.00	30.00	±0.30	
34	33.00	34.00	±0.40	
40	39.00	40.00	±0.40	
50	49.00	50.00	±0.40	
60	59.00	60.00	±0.40	
64	63.00	64.00	±0.40	



detail A
3:1
(28AWG)



detail A
3:1
(30AWG)

GENERAL TOLERANCE		ANGLE TOLERANCE	
X.	±0.60	X.	±5°
.X	±0.38	.X	±3°
.XX	±0.25	.XX	±2°
DRAWING TYPE		CUSTOMER	
SCALE		1:1	SHEET 1 OF 1
DRAWING NO.		C-DS1057-01-XXXXX-X-D	

PROJECTION		TITLE	UL 2651 PITCH 1.00mm FLAT CABLE
UNITS	mm		
SHEET SIZE	A4	SERIES	DS1057-01 SERIES

晨翔电子有限公司
CONNFLY CONNFLY ELECTRONIC CO. LTD