

NOTES

- ① MATERIAL AND FINISHED (PLATING SPECIFICATION) : SEE TABLE 1, TABLE 2.
材料及び仕上げ (めっき仕様) : TABLE 1, TABLE 2 参照
- ② MATE WITH: 204532 SERIES
嵌合相手 : 204532シリーズ
- ③ APPLY FOR CIRCUIT SIZE/2 = EVEN.
極数/2=偶数 に適用
- 4. PRODUCT SPECIFICATION: 2045320001-PS PS 000
製品仕様書 : 2045320001-PS PS 000
- 5. TERMINAL AND NAIL COPLANARITY : 0.1mm MAXIMUM
ターミナルとネイルの平坦度は0.1mm 以下

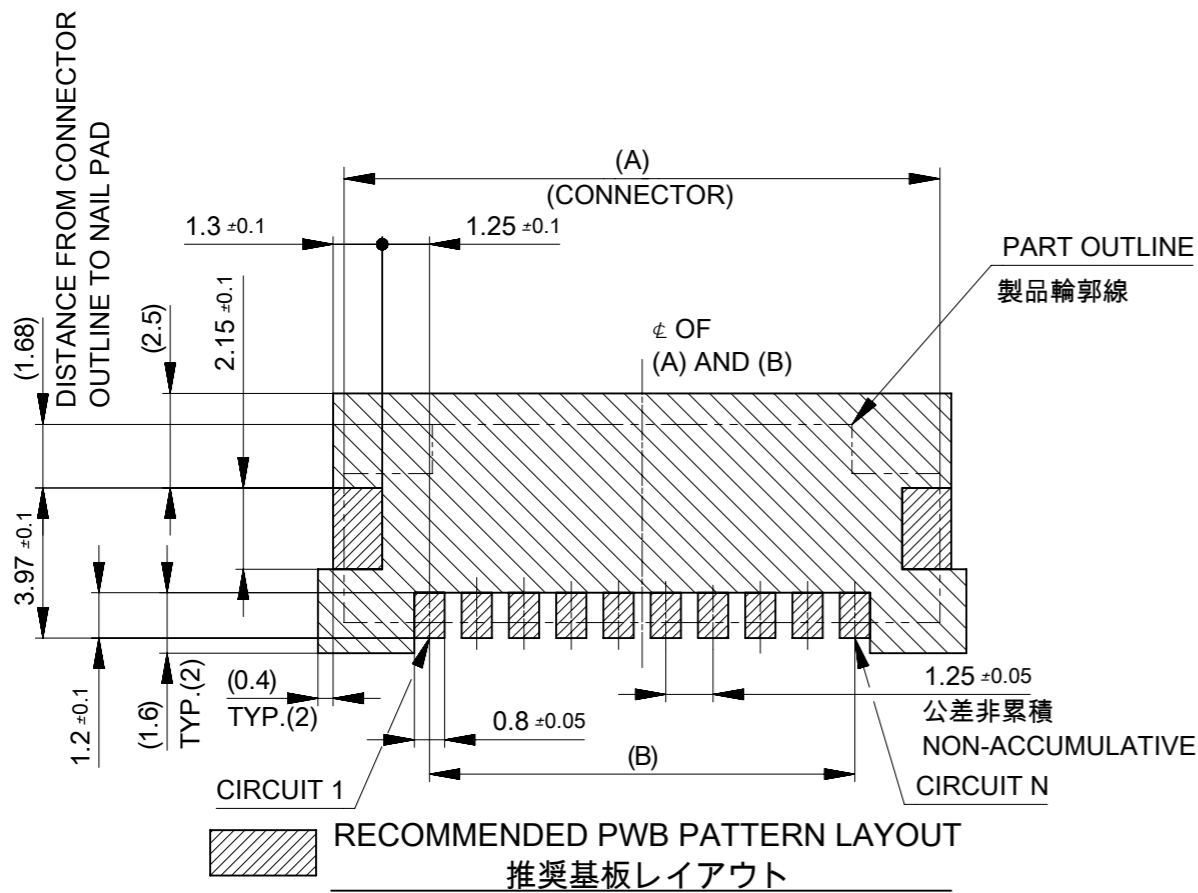
④ TABLE 1

NO 番号	PART 部品	MATERIAL 材質
①	HOUSING ハウジング	POLYAMIDE (PA), GLASS FILLED, UL94 V-0, COLOR: SEE SHEET 5 ポリアミド(PA)、ガラス充填、UL94 V-0、色 : SHEET 5 参照
②	TERMINAL ターミナル	BRASS 黄銅
		MATTE TIN-BISMUTH PLATING : 1.0 MICRO-METER MINIMUM 錫ビスマスめっき
		NICKEL (UNDER-PLATING) : 1.0 MICRO-METER MINIMUM ニッケルめっき(下地)
③	NAIL ネイル	BRASS 黄銅
		MATTE TIN PLATING : 1.0 MICRO-METER MINIMUM 錫めっき
		NICKEL (UNDER-PLATING) : 1.0 MICRO-METER MINIMUM ニッケルめっき(下地)
④	COVER TAPE カバートープ	POLYIMIDE ポリイミド

20.2	44±0.3	45.4	49.4	12	22.62	18.75	23.25	16					
					21.37	17.5	22	15					
					20.12	16.25	20.75	14					
					18.87	15	19.5	13					
					17.62	13.75	18.25	12					
14.2	32±0.3	33.4	37.4	10	16.37	12.5	17	11					
					15.12	11.25	15.75	10					
					11.5	24 ^{+0.3} _{-0.1}	25.4	29.4	8	13.87	10	14.5	9
										12.62	8.75	13.25	8
										11.37	7.5	12	7
7.5	16 ^{+0.3} _{-0.1}	17.4	21.4	5	10.12	6.25	10.75	6					
					8.87	5	9.5	5					
					7.62	3.75	8.25	4					
H	G	F	E	D	6.37	2.5	7	3					
					5.12	1.25	5.75	2					
					C	B	A	CIRCUIT SIZE 極数					

THIS DRAWING CONTAINS INFORMATION THAT IS PROPRIETARY TO MOLEX ELECTRONIC TECHNOLOGIES, LLC AND SHOULD NOT BE USED WITHOUT WRITTEN PERMISSION

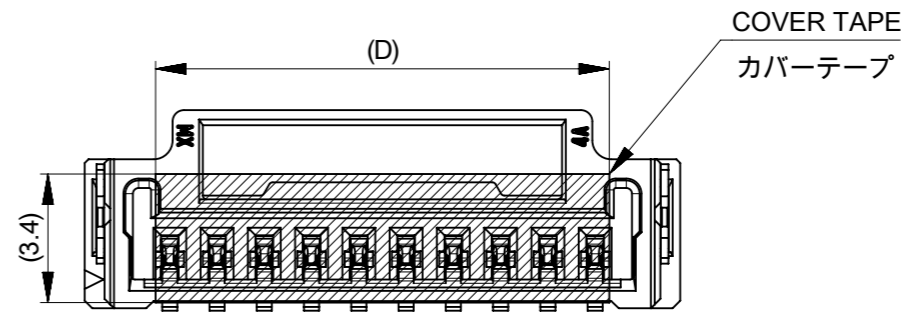
DIMENSION UNITS mm	SCALE NTS	CURRENT REV DESC: RELEASED		molex			
GENERAL TOLERANCES (UNLESS SPECIFIED)		EC NO: 621849					MICRO-LOCK PLUS 1.25 W/B SINGLE ROW VERTICAL SMT PLUG ASSEMBLY FOR POTTING
ANGULAR TOL ± 3.0°	4 PLACES ± 0.2	DRWN: TAKAIKE	2019/08/01	PRODUCT CUSTOMER DRAWING			
3 PLACES ± 0.2	2 PLACES ± 0.2	CHK'D: SAKIYAMA	2019/08/20	DOCUMENT NUMBER			
1 PLACE ± 0.2	0 PLACES ± 0.2	APPR: AIDA	2019/08/20	2059573000-SD			
DRAFT WHERE APPLICABLE MUST REMAIN WITHIN DIMENSIONS		THIRD ANGLE PROJECTION	DRAWING	SERIES	MATERIAL NUMBER	CUSTOMER	SHEET NUMBER
			A3-SIZE	205957	SEE SHEET 5	GENERAL	1 OF 5



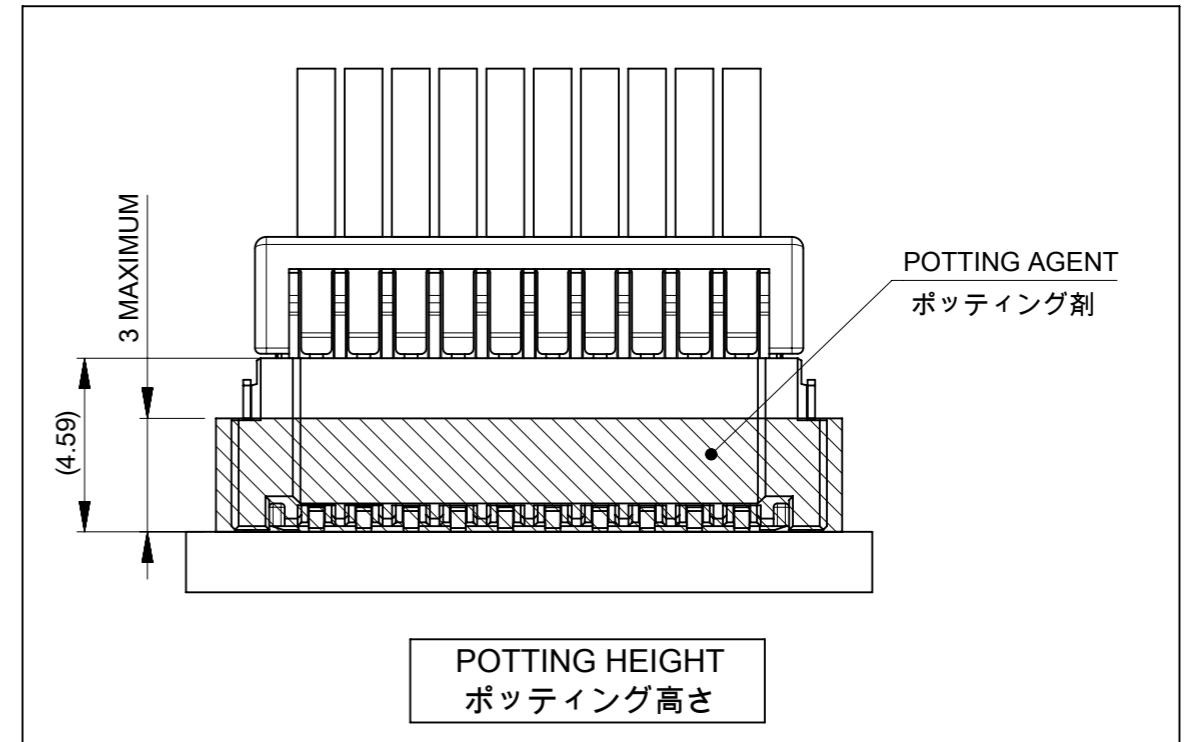
RECOMMENDED PWB PATTERN LAYOUT
推奨基板レイアウト

(REFERENCE: PWB THICKNESS 1.6mm, STENCIL THICKNESS 0.15mm, APERTURE RATIO 100%)
(参考: 基板厚 1.6mm, メタルマスク厚さ 0.15mm, マスク開口率100%)

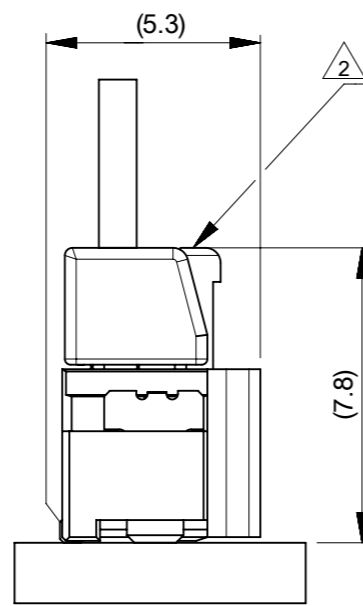
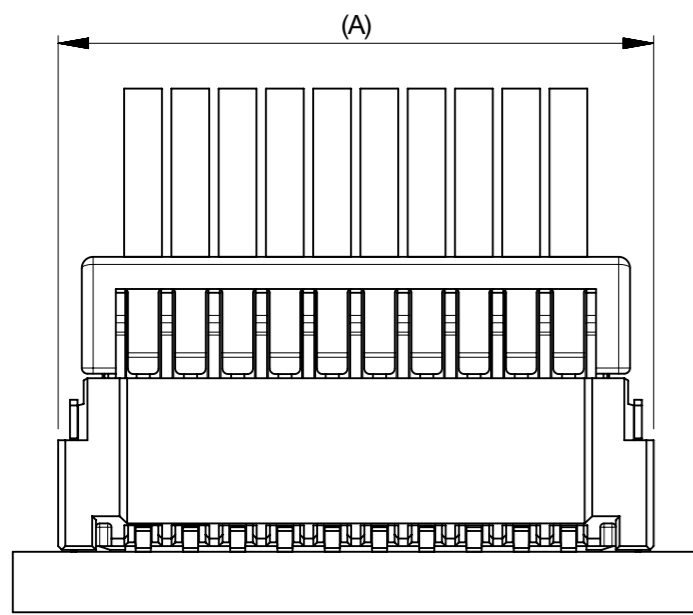
RESTRICTED AREA
NO PWB COMPONENTS ALLOWED.
パターン禁止エリア



VACUUM AREA
吸着範囲



POTTING HEIGHT
ポッティング高さ

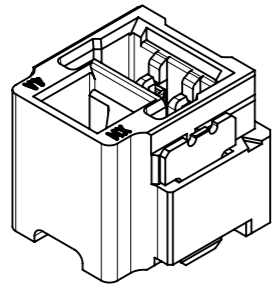


MATE WITH : 204532 SERIES
嵌合相手 : 204532シリーズ

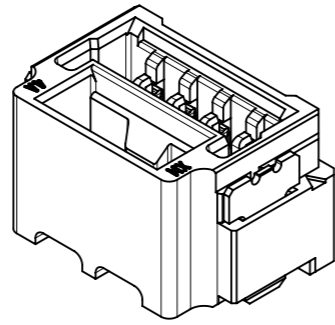
MATED CONNECTORS
嵌合状態図

THIS DRAWING CONTAINS INFORMATION THAT IS PROPRIETARY TO MOLEX ELECTRONIC TECHNOLOGIES, LLC AND SHOULD NOT BE USED WITHOUT WRITTEN PERMISSION									
DIMENSION UNITS		SCALE		CURRENT REV DESC: RELEASED					
mm		NTS		<p style="text-align: center;">molex</p> <p style="text-align: center;">MICRO-LOCK PLUS 1.25 W/B SINGLE ROW VERTICAL SMT PLUG ASSEMBLY FOR POTTING</p> <p style="text-align: center;">PRODUCT CUSTOMER DRAWING</p>					
GENERAL TOLERANCES (UNLESS SPECIFIED)									
ANGULAR TOL		± 3.0 °							
4 PLACES		± 0.2							
3 PLACES		± 0.2							
2 PLACES		± 0.2							
1 PLACE		± 0.2		INITIAL REVISION:		DOCUMENT NUMBER		DOC TYPE	
0 PLACES		± 0.2		DRWN: TAKAIKE		2019/08/01		2059573000-SD	
DRAFT WHERE APPLICABLE MUST REMAIN WITHIN DIMENSIONS		THIRD ANGLE PROJECTION		DRAWING		SERIES		MATERIAL NUMBER	
				A3-SIZE		205957		SEE SHEET 5	
								CUSTOMER	
								GENERAL	
								SHEET NUMBER	
								2 OF 5	

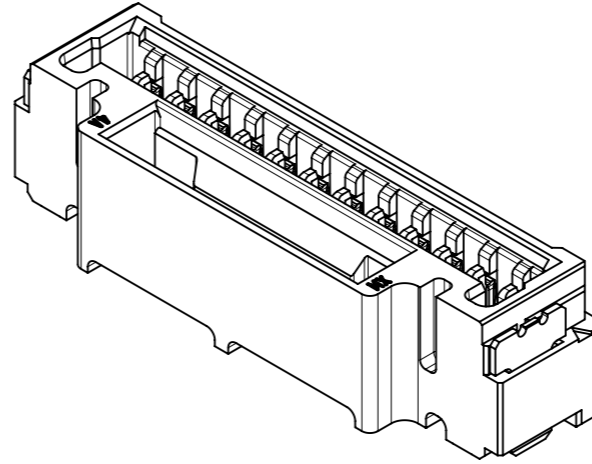
製品形状
PRODUCT SHAPE



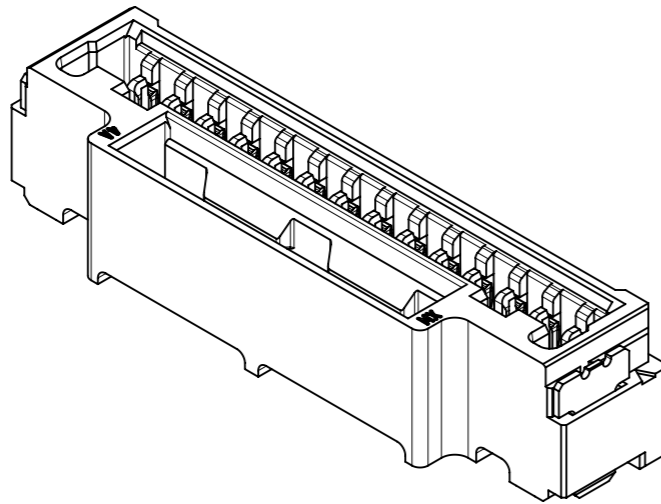
2-3 CIRCUIT
2-3極



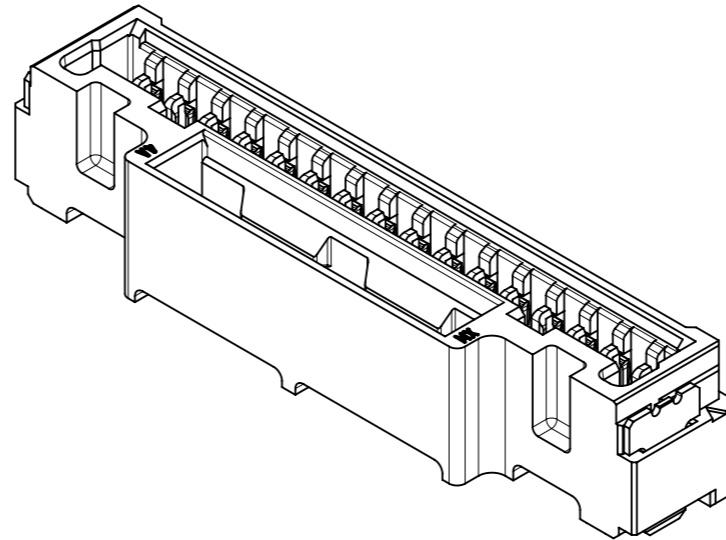
4-11 CIRCUIT
4-11極



12-13 CIRCUIT
12-13極



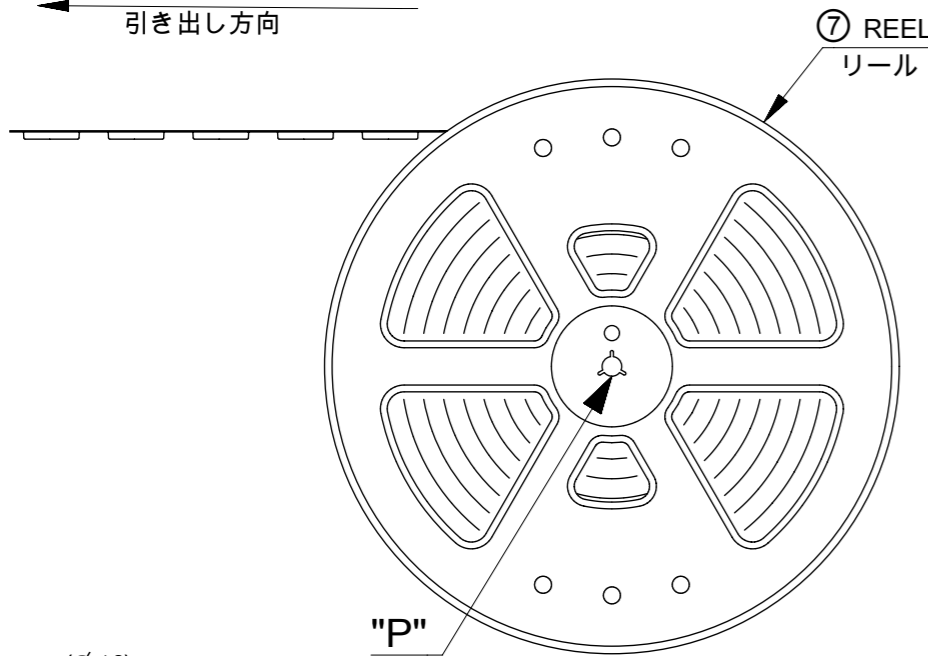
14 CIRCUIT
14極



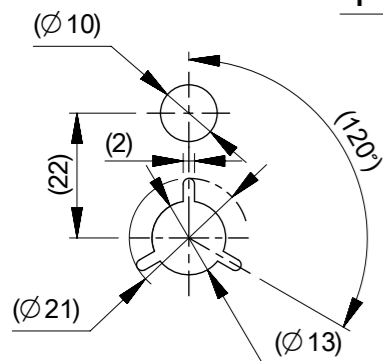
15-16 CIRCUIT
15-16極

THIS DRAWING CONTAINS INFORMATION THAT IS PROPRIETARY TO MOLEX ELECTRONIC TECHNOLOGIES, LLC AND SHOULD NOT BE USED WITHOUT WRITTEN PERMISSION									
DIMENSION UNITS		SCALE		CURRENT REV DESC: RELEASED					
mm		NTS							
GENERAL TOLERANCES (UNLESS SPECIFIED)									
ANGULAR TOL		± 3.0 °		EC NO: 621849					
4 PLACES		± 0.2		DRWN: TAKAIKE		2019/08/01		MICRO-LOCK PLUS 1.25 W/B	
3 PLACES		± 0.2		CHK'D: SAKIYAMA		2019/08/20		SINGLE ROW VERTICAL SMT PLUG ASSEMBLY	
2 PLACES		± 0.2		APPR: AIDA		2019/08/20		FOR POTTING	
1 PLACE		± 0.2		INITIAL REVISION:				PRODUCT CUSTOMER DRAWING	
0 PLACES		± 0.2		DRWN: TAKAIKE		2019/08/01		DOCUMENT NUMBER	
				APPR: AIDA		2019/08/20		DOC TYPE	
DRAFT WHERE APPLICABLE MUST REMAIN WITHIN DIMENSIONS		THIRD ANGLE PROJECTION		DRAWING		SERIES		DOC PART	
				A3-SIZE		205957		REVISION	
				MATERIAL NUMBER		CUSTOMER		SHEET NUMBER	
				SEE SHEET5		GENERAL		3 OF 5	

PULL OUT DIRECTION
引き出し方向



⑦ REEL
リール



DETAIL "P"

NOTE 注記

- 6. NUMBER OF CONNECTORS : 1000 PCS/REEL
梱包数量 : 1000個/リール
- 7. LEAD TAPE LENGTH.
リードテープ長さ

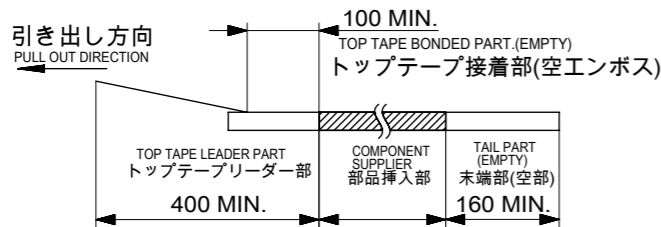
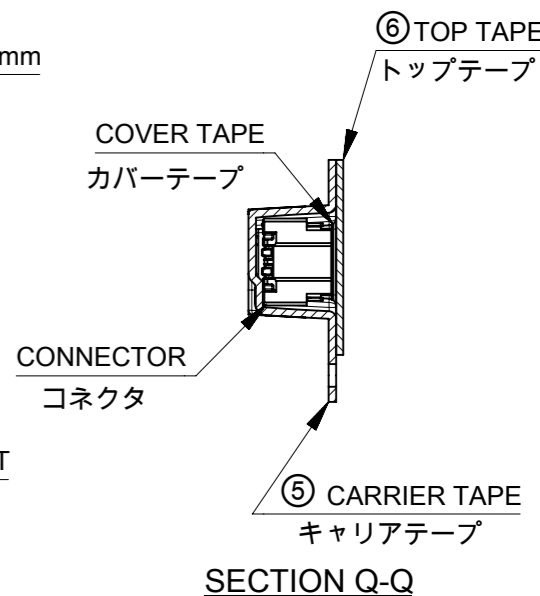
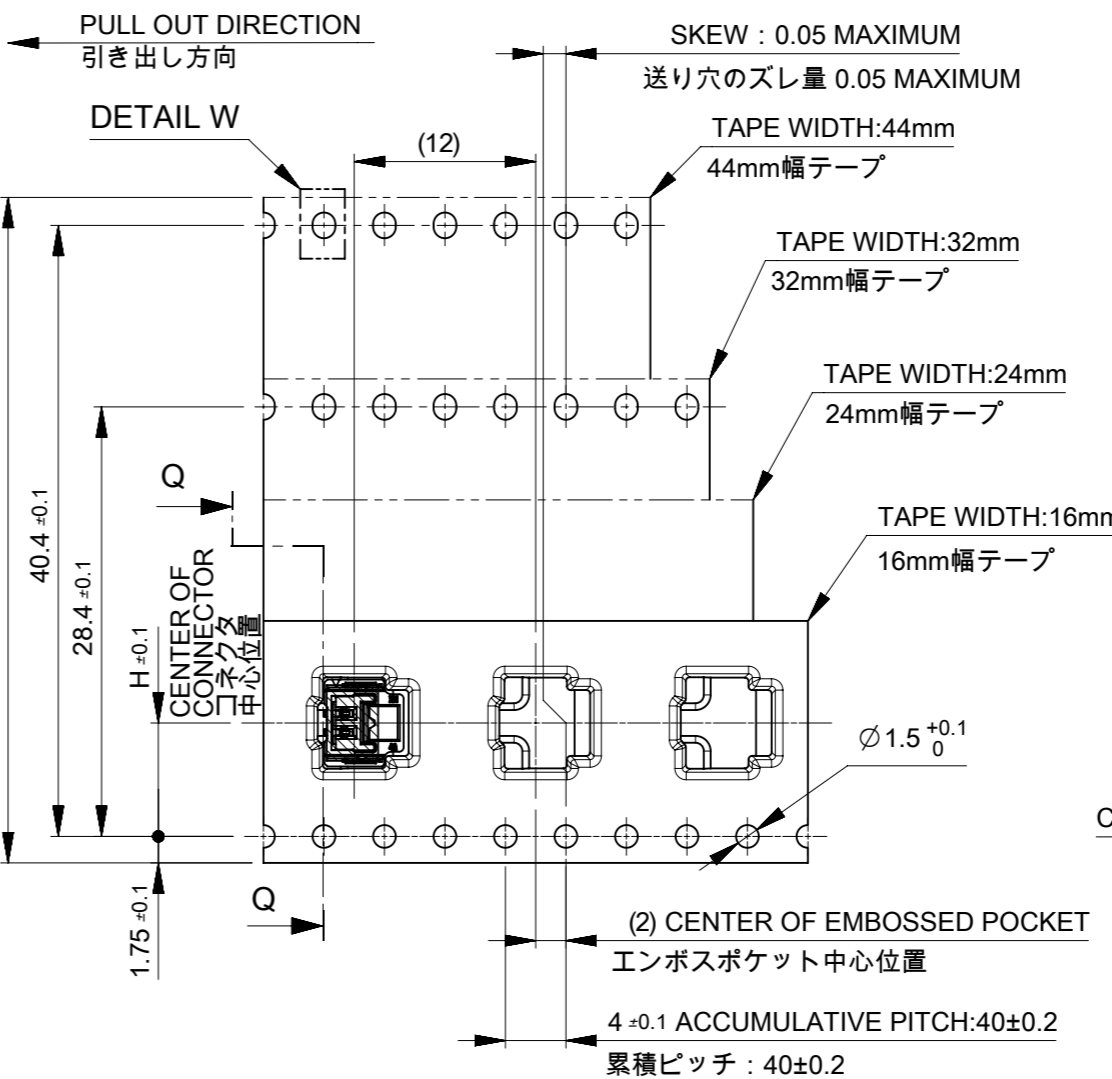
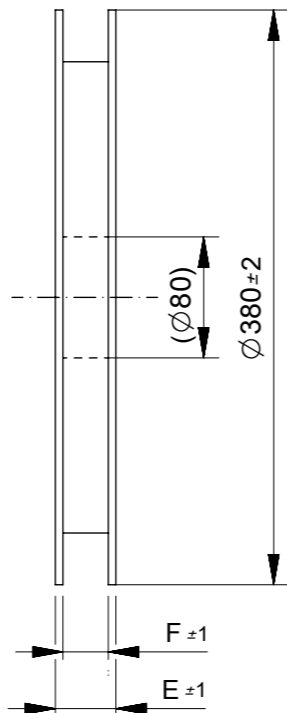


TABLE 2

NO 番号	PART 部品	MATERIAL 材質
⑤	CARRIER TAPE キャリアテープ	POLYSTYRENE(PS), etc ポリスチレン(PS)、その他
⑥	TOP TAPE トップテープ	POLYETHYLENE(PE), etc ポリエチレン(PE)、その他
⑦	REEL リール	POLYSTYRENE(PS) < RECYCLE MATERIAL CONTAINED > ポリスチレン(PS) < リサイクル材を含む >

DOCUMENT STATUS | P1 | RELEASE DATE | 2019/08/20 06:36:19



SECTION Q-Q

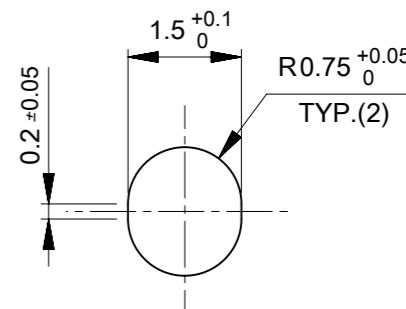
- 8. TOP TAPE PEELING FORCE IS DEFINED BY IEC60286-3.
トップテープの剥離強度はIEC60286-3に準拠
- 9. PACKING INFORMATION : 2059579200-SPK PS 200
梱包仕様書 : 2059579200-SPK PS 200
- ORDER NO : PLEASE REFER TO SHEET 5.
発注番号 : SHEET 5参照

△10

205957**7*

CIRCUIT SIZE
極数

番号 NO.	HOUSING COLOR ハウジングカラー
0	NATURAL(BEIGE) ナチュラル(ベージュ)
1	BLACK 黒



DETAIL W

THIS DRAWING CONTAINS INFORMATION THAT IS PROPRIETARY TO MOLEX ELECTRONIC TECHNOLOGIES, LLC AND SHOULD NOT BE USED WITHOUT WRITTEN PERMISSION

DIMENSION UNITS mm	SCALE NTS	CURRENT REV DESC: RELEASED		molex		
GENERAL TOLERANCES (UNLESS SPECIFIED)		EC NO: 621849				
ANGULAR TOL	± 3.0 °	DRWN: TAKAIKE	2019/08/01	PRODUCT CUSTOMER DRAWING		
4 PLACES	± 0.2	CHK'D: SAKIYAMA	2019/08/20	DOCUMENT NUMBER		
3 PLACES	± 0.2	APPR: AIDA	2019/08/20	2059573000-SD		
2 PLACES	± 0.2	INITIAL REVISION:		DOC TYPE	DOC PART	REVISION
1 PLACE	± 0.2	DRWN: TAKAIKE	2019/08/01	PSD	000	A
0 PLACES	± 0.2	APPR: AIDA	2019/08/20	SHEET NUMBER		
DRAFT WHERE APPLICABLE MUST REMAIN WITHIN DIMENSIONS		THIRD ANGLE PROJECTION	DRAWING	SERIES	MATERIAL NUMBER	CUSTOMER
			A3-SIZE	205957	SEE SHEET 5	GENERAL

△10 205957**7* PRODUCT NUMBER LIST 製品番号一覧

BLACK 黒	NATURAL (BEIGE) ナチュラル (ベージュ)	HOUSING COLOR ハウジングカラー
2059571671	2059571670	16
2059571571	2059571570	15
2059571471	2059571470	14
2059571371	2059571370	13
2059571271	2059571270	12
2059571171	2059571170	11
2059571071	2059571070	10
2059570971	2059570970	9
2059570871	2059570870	8
2059570771	2059570770	7
2059570671	2059570670	6
2059570571	2059570570	5
2059570471	2059570470	4
2059570371	2059570370	3
2059570271	2059570270	2
ORDER NO 発注番号 ----- PACKAGING STYLE : CARRIER TAPE AND REEL 梱包形態 : キャリアテープ梱包		CIRCUIT SIZE 極数

THIS DRAWING CONTAINS INFORMATION THAT IS PROPRIETARY TO MOLEX ELECTRONIC TECHNOLOGIES, LLC AND SHOULD NOT BE USED WITHOUT WRITTEN PERMISSION									
DIMENSION UNITS	SCALE	CURRENT REV DESC: RELEASED					molex		
mm	NTS								
GENERAL TOLERANCES (UNLESS SPECIFIED)		EC NO: 621849					MICRO-LOCK PLUS 1.25 W/B SINGLE ROW VERTICAL SMT PLUG ASSEMBLY FOR POTTING		
ANGULAR TOL	± 3.0 °	DRWN: TAKAIKE 2019/08/01							
4 PLACES	± 0.2	CHK'D: SAKIYAMA 2019/08/20					PRODUCT CUSTOMER DRAWING		
3 PLACES	± 0.2	APPR: AIDA 2019/08/20							
2 PLACES	± 0.2	INITIAL REVISION:					DOCUMENT NUMBER 2059573000-SD		
1 PLACE	± 0.2	DRWN: TAKAIKE 2019/08/01							
0 PLACES	± 0.2	APPR: AIDA 2019/08/20					DOC TYPE	DOC PART	REVISION
DRAFT WHERE APPLICABLE MUST REMAIN WITHIN DIMENSIONS		THIRD ANGLE PROJECTION	DRAWING	SERIES	MATERIAL NUMBER	CUSTOMER		SHEET NUMBER	
			A3-SIZE	205957	SEE SHEET5	GENERAL		5 OF 5	