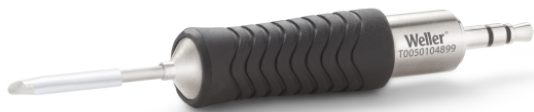


RTP 020 G

Product no.: T0050104899



Benefits

- › Short tip-to-grip distance: Close working distance to the component for higher precision and maximum control
- › Active tip technology: Fastest heat-up and recovery time, sensor close to the solder tip, excellent heat transfer. No downtime, continuing workflow, excellent results
- › Digital tool for data storage: Motion activated usage sensor for energy control and data storage
- › Patented tip & grip design: Only soldering tip on the market which can be changed without a tool. 20% faster change than leading competitors.
- › One intelligent platform: One station for all active tips & tools. WX platform meets all operational hand soldering needs.

**Technical Data**

Tip shape	Gullwing
Tip type	HM
Width in mm	2
Width in inches	0.079
Thickness in mm	---
Thickness in inches	---
Length mm	16.6
Length inches	0.654
Power	40 W
Packaging unit	1