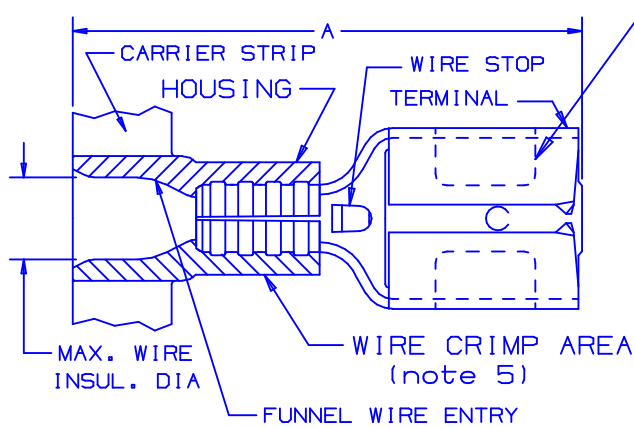
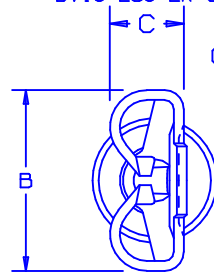


THIS COPY IS PROVIDED ON A RESTRICTED BASIS AND IS NOT TO BE USED IN ANY WAY DETRIMENTAL TO THE INTERESTS OF PANDUIT CORP.



CURL SLOTS IN P/N DV10-250-2K ONLY



CERTIFIED LR31212

LISTED 20H3 E78522

* NOT UL LISTED

NOTES:

- UL LISTED AND CSA CERTIFIED FOR:
 - A. 600V MAX VOLTAGE RATING
 - B. 221°F (105°C) MAX TEMP RATING
 - C. STRANDED COPPER WIRE ONLY
 - D. 6-12 LBS INITIAL INSERTION/WITHDRAWAL FORCE
- PACKAGE QTY: 2K=2000 PIECES, 3K=3000 PIECES
- MATERIAL: CONTINUOUS MOLDED STRIP CARRIER
 - A. STAMPING-CDA 260 BRASS, TIN PLATED
 - B. HOUSING-PVC
- DIMENSIONS IN BRACKETS ARE IN mm OR mm²
- PART NUMBER DV10-250 IS CONSTRUCTED WITH BRASS SLEEVE IN WIRE CRIMP AREA
- WIRE STRIP LENGTH $9/32 \begin{smallmatrix} +1/32 \\ -0 \end{smallmatrix}$ ($11/32 \begin{smallmatrix} +1/32 \\ -0 \end{smallmatrix}$ FOR DV10-250-2K)

PART NUMBER	TAB SIZE	WIRE RANGE AWG	COLOR	MAX. INSUL.	DIMENSIONS in.			TOOL CHART - RECOMMENDED PRESSES: CP-851, CP-860, CP-861, CP-862	
					A ±.03 (.8)	B ±.01 (.3)	C ±.01 (.3)	CA-800 & CA9 APPLICATOR DIES	
DV18-250B-3K	.250 X .032 (6,3 X 0,8)	22-18 (0,5-1,0)	RED	.15 (3,8)	.83 (21,1)	.29 (7,4)	.12 (3,0)	CD-800-1 CD9-1A	
DV18-205B-3K	OR .205 X .032 .187 X .032	22-18 (0,5-1,0)	RED	.15 (3,8)	.77 (19,6)	.25 (6,4)	.12 (3,0)		
DV18-206B-3K	OR .205 X .020 .187 X .020	22-18 (0,5-1,0)	RED	.15 (3,8)	.77 (19,6)	.25 (6,4)	.11 (2,8)		
DV18-187B-3K	.187 X .032 (4,8 X 0,8)	22-18 (0,5-1,0)	RED	.15 (3,8)	.77 (19,6)	.23 (5,8)	.10 (2,5)		
DV18-188B-3K	.187 X .020 (4,8 X 0,5)	22-18 (0,5-1,0)	RED	.15 (3,8)	.77 (19,6)	.23 (5,8)	.09 (2,3)		
DV14-250B-3K	.250 X .032 (6,3 X 0,8)	16-14 (1,5-2,5)	BLUE	.17 (4,3)	.83 (21,1)	.29 (7,4)	.12 (3,0)	CD-800-2 CD9-2A	
DV14-205B-3K	OR .205 X .032 .187 X .032	16-14 (1,5-2,5)	BLUE	.17 (4,3)	.77 (19,6)	.25 (6,4)	.12 (3,0)		
DV14-206B-3K	OR .205 X .020 .187 X .020	16-14 (1,5-2,5)	BLUE	.17 (4,3)	.77 (19,6)	.25 (6,4)	.11 (2,8)		
DV14-187B-3K	.187 X .032 (4,8 X 0,8)	16-14 (1,5-2,5)	BLUE	.17 (4,3)	.77 (19,6)	.23 (5,8)	.10 (2,5)		
DV14-188B-3K	.187 X .020 (4,8 X 0,5)	16-14 (1,5-2,5)	BLUE	.17 (4,3)	.77 (19,6)	.23 (5,8)	.09 (2,3)		
*DV10-250-2K	.250 X .032 (6,3 X 0,8)	12-10 (4,0-6,0)	YELLOW	.23 (5,8)	.95 (24,1)	.29 (7,4)	.12 (3,0)	CD-800-3 CD9-3B	

07	5/04	JHNU		ADDED CURL SLOTS IN VIEW			
06	8/02	SABSKB		ADDED CP-862, CA9, CD9-1A, CD9-2A, & CD9-3B TO TOOL CHART. WIRE RANGE FOR DV18-250B-3K, DV18-205B-3K, DV18-206B-3K, DV18-187B-3K, & DV18-188B-3K WERE (.05-1.8), FOR DV10-250-2K WAS (2.5-6.0), & WASN'T CSA CERTIFIED	10347	LCA	TRO
---	---	---	---		---	---	---
05	1/01	KMD		CAD FILE SPEC. WAS N41169AA_PCD_04	08938		
04	6/97	JAMB		DV18/14-187/188B-3K HAS UL/CSA MAX. INSUL DIA. FOR DV18 PARTS, WAS .16 (4.1)	06013		
REV	DATE	BY	CHK	DESCRIPTION	ECN#	CUST	PM

PANDUIT CORP.

A41169_07

TINLEY PARK, ILLINOIS

DISCO-FEMALE DISCONNECTS, VINYL INSULATED
.250 X .032, .205 X .032/.020, .187 X .032/.020

DRAWN BY DSM	CHK'D LA	SCALE NONE	DRAWING NO./CAD FILENAME A41169
-----------------	-------------	---------------	------------------------------------