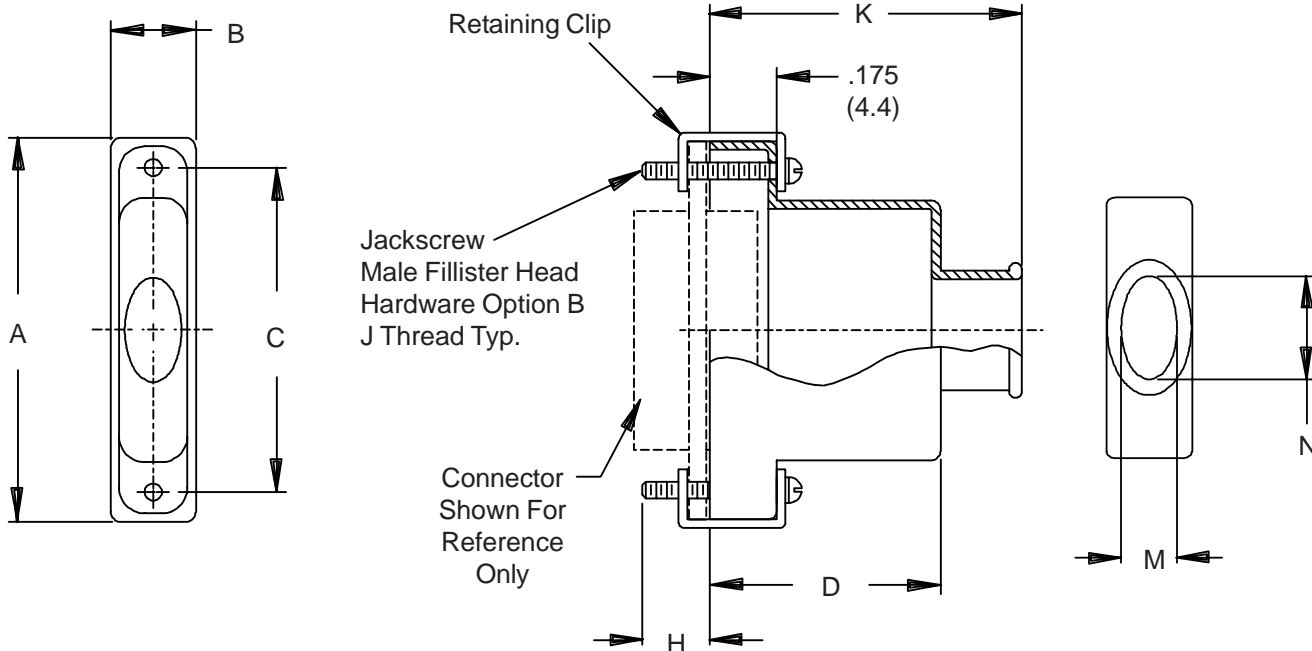




# Micro-D Backshells Elliptical Entry EMI Backshell



## HOW TO ORDER

Series	Basic Part Number	Shell Plating *	Shell Size (Table I)	Hardware Options *	Band Option
500	047	<b>C</b> – Black Anodize <b>E</b> – Chem. Film <b>J</b> – Gold Iridite Over Cadmium Over Electroless Nickel <b>M</b> – Electroless Nickel <b>NF</b> – Cadmium, Olive Drab Over Electroless Nickel <b>Z2</b> – Gold	<b>09</b> <b>15</b> <b>21</b> <b>25</b> <b>31</b> <b>37</b> <b>51</b> <b>100</b>	<b>B</b> – (2) male fillister head <b>E</b> – (2) extended jackscrew <b>H</b> – (2) male hex socket <b>F</b> – (2) female jackpost	<b>B</b> 600-052 Band Supplied - (Omit if Not Required)
<b>Sample Part Number:</b>					
500	— 047	<b>M</b>	<b>21</b>	<b>B</b>	<b>B</b>

\* SEE PAGE C-2 FOR COMPLETE INFORMATION

Metric dimensions (mm) are indicated in parentheses.

# Micro-D Backshells

## Elliptical Entry EMI Backshell



Elliptical entry Micro-D backshells offer greater wire accomodation than round entry backshells. These rugged aluminum backshells are designed for use with Glenair's EMI bands for shield termination.

- **Elliptical Entry for Increased Wire Bundle Size**
- **Aluminum Alloy**
- **Supplied with Mounting Hardware**

**TABLE I - DIMENSIONS**

SHELL SIZE	A	B	C	D	H
09	.775 (19.7)	.34 (8.6)	.565 (14.4)	.32 (8.1)	.154 (3.9)
15	.925 (23.5)	.34 (8.6)	.715 (18.2)	.44 (11.2)	.154 (3.9)
21	1.075 (27.3)	.34 (8.6)	.865 (22.0)	.56 (14.2)	.154 (3.9)
25	1.175 (29.8)	.34 (8.6)	.965 (24.5)	.62 (15.7)	.154 (3.9)
31	1.325 (33.7)	.34 (8.6)	1.115 (28.3)	.68 (17.3)	.154 (3.9)
37	1.475 (37.5)	.34 (8.6)	1.265 (32.1)	.72 (18.3)	.154 (3.9)
51	1.425 (36.2)	.38 (9.7)	1.215 (30.9)	.75 (19.1)	.154 (3.9)
100	2.160 (54.9)	.43 (10.9)	1.800 (45.7)	.81 (20.6)	.194 (4.9)

SHELL SIZE	J THREAD	K ± .03 (0.8)	M	N
09	2-56 UNC-2	.75 (19.1)	.281 (7.1)	.312 (7.9)
15	2-56 UNC-2	.88 (22.4)	.281 (7.1)	.420 (10.7)
21	2-56 UNC-2	1.00 (25.4)	.281 (7.1)	.590 (15.0)
25	2-56 UNC-2	1.06 (26.9)	.281 (7.1)	.690 (17.5)
31	2-56 UNC-2	1.12 (28.4)	.281 (7.1)	.820 (20.8)
37	2-56 UNC-2	1.16 (29.5)	.281 (7.1)	.970 (24.6)
51	2-56 UNC-2	1.19 (30.2)	.312 (7.9)	.920 (23.4)
100	4-40 UNC-2	1.25 (31.8)	.360 (9.1)	1.290 (32.8)

Metric dimensions (mm) are indicated in parentheses.