

7234739

26/02 02 TUE 13:01 FAX 0118 981 7513 Honeywell

DO NOT SCALE PRINT

MT0-CSN-235

REPLACES

ISSUE 1/2

MARKING NUMBER

RELEASE No.

REVISIONS

27-Mar-98

KMG

DRAWN

CHECK

DESIGN

AUTHORISATION

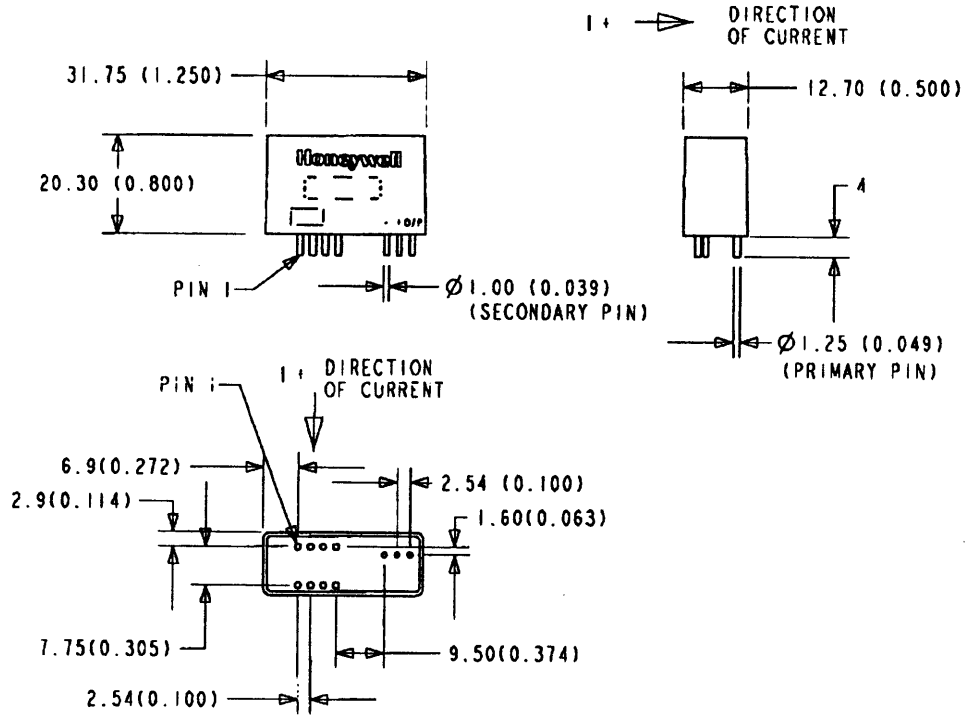
Honeywell

CSN SERIES

CATALOGUE LISTING

CHART No.

| CAT. LISTING | ISSUE No. | SUPPLY RANGE | HOUSING MATERIAL       | SENSING RANGE |      |             | OUTPUT NOMINAL | MAXIMUM COIL RESISTANCE AT 70°C | NUMBER OF TURNS |
|--------------|-----------|--------------|------------------------|---------------|------|-------------|----------------|---------------------------------|-----------------|
|              |           |              |                        | NOM.          | MAX. | MAX(10SECS) |                |                                 |                 |
| CSNE151-100  | 1         | ±15 V        | GLASS-FILLED POLYESTER | 25A           | 50A  | 62A         | 25mA           | 66Ω                             | 1000±1          |
| CSNE151-102  | 1         | ±15 V        | GLASS-FILLED POLYESTER | 25A           | 50A  | 62A         | 25mA           | 66Ω                             | 1000±1          |



- NOTES:
1. MOUNTING HOLES - PRIMARY PINS  $\phi 1.45\text{mm}$  (0.057)
  2. MOUNTING HOLES - SECONDARY PINS  $\phi 1.20\text{mm}$  (0.047)

| PRIMARY TURNS | PRIMARY CURRENT NOM. $I_{pn}$ (A) | PRIMARY CURRENT MAX. $I_p$ (A) | NOM. OUTPUT CURRENT $I_s$ (mA) | PIN CONNECTIONS |
|---------------|-----------------------------------|--------------------------------|--------------------------------|-----------------|
| 1             | 25                                | 44                             | 25                             |                 |
| 2             | 12                                | 22                             | 24                             |                 |
| 3             | 8                                 | 14                             | 24                             |                 |
| 4             | 6                                 | 11                             | 24                             |                 |

TOLERANCES UNLESS OTHERWISE STATED

LINEAR : ISO 2768-1

ANGULAR : ...

THE COPYRIGHT OF THIS DRAWING IS THE PROPERTY OF HONEYWELL LTD. THE DRAWING IS SUPPLIED IN CONFIDENCE, AND MUST NOT BE USED FOR ANY PURPOSE OTHER THAN FOR WHICH IT IS SUPPLIED.

THIRD ANGLE PROJECTION

SCALE 1:1

DIMENSIONS ARE IN MILLIMETRES

MODIFY ON P.O/E SYSTEM ONLY