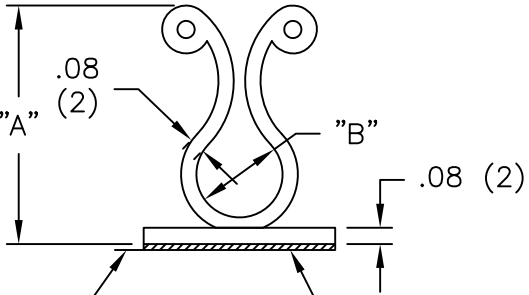
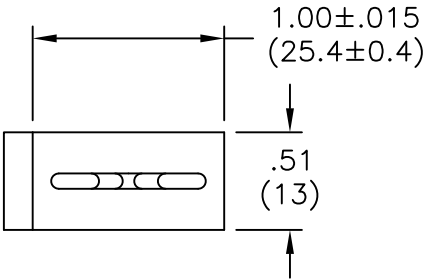


PART NO. W/ADHESIVE	"A" REF.	"B" BUNDLE DIA. RANGE
KLB-350A-RT	1.07 (27.2)	.30-.40 (7.6-10.1)
KLB-450A-RT	1.23 (31.2)	.40-.50 (10.1-12.7)
KLB-750A-RT	1.58 (40.1)	.70-.80 (17.8-20.3)



TYPICAL RELEASE TAB LOCATION

1/32 (0.8) THICK, DOUBLE SIDED ADHESIVE TAPE

NOTES:

1. MATERIAL: NYLON 6/6 (RMS-01).  
FLAME RETARDANT, NYLON (RMS-19),  
AVAILABLE BY SPECIAL ORDER ONLY.
2. COLOR: NATURAL.
3. ACRYLIC ADHESIVE TAPE (RMS-15), WHITE LINER.  
RUBBER ADHESIVE TAPE (RMS-102), BLUE LINER,  
AVAILABLE BY SPECIAL ORDER ONLY.  
TO ORDER USE KLB-XXXXA1-RT.

TITLE: KURLY-LOK ON BASE		DWG IN IN (MM)		FINAL				
E	SE CO 200118 FOR CHANGES	SK 01.30.08	TOLERANCES UNLESS NOTED	FILE # KLB	DWN: J.B.	APP:	PART #	PRINT TYPE
D	SEE CO 200112 FOR CHANGES	SK 01.24.08	.XX=±.010	MAT'L: SEE NOTES	DT: 01-23-96	DT:		
C	ADDED RUBBER ADHESIVE BY SPECIAL ORDER	SM 05.17.02	.XXX=±.005	RE: RICHCO, INC.	RICHCO INC. PO BOX 804238, CHICAGO, 60680 (773) 539-4060		SEE TABLE	CA
B	ADDED NOTE 3.	SJ 03.05.02	FRAC=±1/64					
A	CHANGED FILE NUMBER	SM 05.31.01	ANG=±1'					
REV	DESCRIPTION	ENGR DATE						

# Mouser Electronics

Authorized Distributor

Click to View Pricing, Inventory, Delivery & Lifecycle Information:

Essentra:

[KLB-350A-RT](#) [KLB-750A-RT](#) [KLB-450A-RT](#)