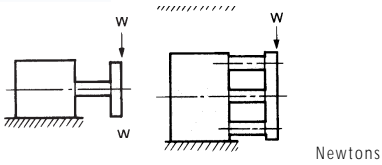


LOAD DATA



Bore Size	Model	Stroke (mm)							
		10	20	25	30	40	50	75	100
12	MGQM	21	18	15	13	12			
12	MGQL	27	22	17	21	19			
16	MGQM	34	28	25	22	19			
16	MGQL	38	30	26	37	33			
20	MGQM		51	44	38	34	57	49	
20	MGQL		55	47	78	69	53	44	
25	MGQM		70	60	53	47	77	65	
25	MGQL		71	61	77	72	59	51	
32	MGQM			196		167	137	108	
32	MGQL			88		59	275	216	
40	MGQM			196		167	137	108	
40	MGQL			88		59	275	216	
50	MGQM			294		255	215	176	
50	MGQL			137		88	392	313	
63	MGQM			294		255	215	176	
63	MGQL			137		88	392	313	
80	MGQM			353		304	255	206	
80	MGQL			235		157	863	686	
100	MGQM			539		470	412	343	
100	MGQL			470		313	1370	1070	

COMPACT GUIDE CYLINDER SERIES MGO Ø12, 16, 20, 25, 32, 40, 50, 63, 80, 100MM

- ✓ Ball bush or slide bearing type
- ✓ High resistance to side load
- ✓ High non-rotating accuracy
- ✓ Magnetic sensing standard
- ✓ Direct mount facility
- ✓ Space saving cylinder
- ✓ Smaller bore size also available



TECHNICAL SPECIFICATIONS

Operation	Double Acting
Fluid	Air
Proof Pressure	1.5MPa (15.3kgf/cm ²)
Max. Operating Pressure	1.0MPa (10.2kgf/cm ²)
Min. Operating Pressure	Ø12m, Ø160.12MPa (1.2kgf/cm ²)
Ø20 - Ø100	0.1MPa(1.0kgf/cm ²)
Ambient and Fluid Temperature	-10 - + 60°C
Piston Speed	Ø12 - Ø6350 - 600 mm/s
Ø80 - Ø100	50 - 400 mm/s
Cushion	Rubber cushion at both sides
Lubrication	Non-lubrication
Stroke Tolerance	+1% mm

NON ROTATING ACCURACY

Ø32•40: Slide bearing	±0.06°
Ball bush bearing	±0.08°
Ø50•63: Slide bearing	±0.05°
Ball bush bearing	±0.06°
Ø80•100: Slide bearing	±0.04
Ball bush bearing	±0.05

(Except for bending of guide rod)

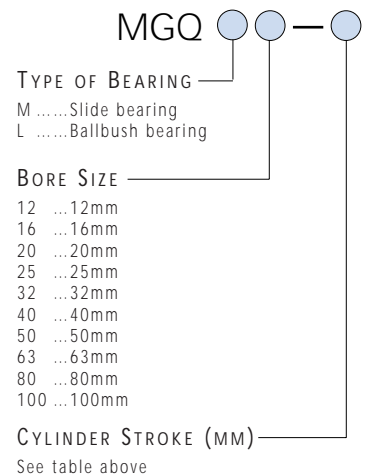
DIMENSIONS
SEE NEXT PAGE

ACCESSORIES
AUTOSWITCHES

Model		Load Voltage	Load Current	Power Source	Internal Voltage Drop	Indicator Lamp	Lead Wire Length
Part No Grommet type	Part No Connector type						
D-Z73L	Reed	24VDC 100VAC	5-40mA 5-20mA		Max 2.4V	ON:RED LED	3m
D-Z80L	Reed	24VDC/AC or less 100VDC/AC	Max 50mA Max 20mA			None	3m
D-Y59AL	3 Wire Solid State NPN	28VDC or less	Max 150mA	5-28VDC	0.8V Max	ON:RED LED	3m
D-Y7PL	3 Wire Solid State PNP	28VDC or less	Max 100mA	5-28VDC	0.8V Max	ON:RED LED	3m
D-Y59BL	2 Wire Solid State	28VDC or less	5-150mA		3V Max	ON:RED LED	3m

STOCKED PRODUCTS
FOR A LIST OF STOCKED PRODUCTS,
PLEASE SEE THE CURRENT SMC PRICE LIST

HOW TO ORDER
COMPACT GUIDE CYLINDER



STOCKED PRODUCTS
FOR A LIST OF STOCKED PRODUCTS,
PLEASE SEE THE CURRENT SMC PRICE LIST

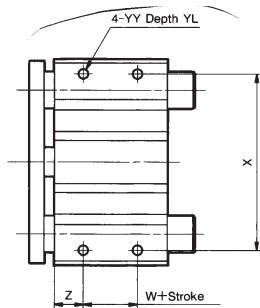


SEE INSIDE FRONT COVER FOR
DETAILS OF YOUR LOCAL SALES OFFICE

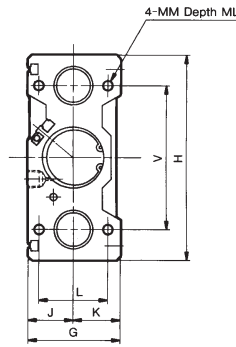
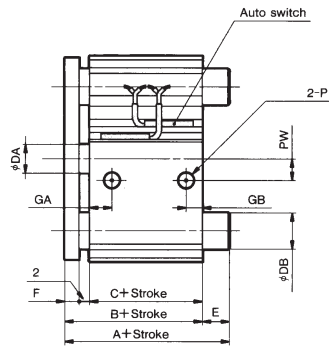
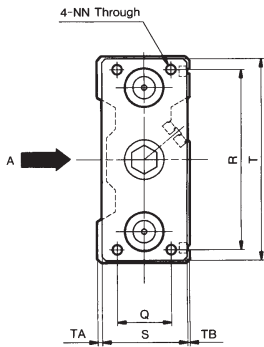


FOR FURTHER TECHNICAL
DETAILS ON THIS
PRODUCT REQUEST
CATALOGUE REFERENCE
E225

DIMENSIONS
MGQ ACTUATOR



A Perspective drawing



Note 1) standard stroke available at specific intervals.
Note 2) A spacer is used for intermediate stroke. (Refer to table on previous page).

Bore size	A	B	C	DA	DB	E	F	G	GA	GB	H	J	K	L	MM	ML	NN	P	PW
12	39	39	29	6	8	0	8	29	11	7.5	58	16	13	18	M4 x 0.7	10	M4 x 0.7	M5	7
16	43	43	33	8	10	0	8	33	11	8	64	18	15	22	M5 x 0.8	13	M5 x 0.8	M5	5
20	47	47	37	10	12	0	8	36	10.5	8.5	74	19	17	26	M5 x 0.8	13	M5 x 0.8	1/8	7
25	47.5	47.5	37.5	12	16	0	8	42	11.5	9	88	21	21	32	M6 x 1.0	15	M6 x 1.0	1/8	8
32	71.5	47.5	37.5	16	20	24	8	51	12.5	9	114	25	26	38	M8 x 1.25	16	M8 x 1.25	1/8	15
40	71.5	54	44	16	20	17.5	8	51	14	10	124	25	26	38	M8 x 1.25	16	M8x1.25	1/8	21
50	81	56	44	20	25	25	10	59	14	11	140	29	30	44	M10 x 1.5	20	M10 x 1.5	1/4	27
63	81	61	49	20	25	20	10	72	16.5	13.5	150	35.5	36.5	44	M10 x 1.5	20	M10 x 1.5	1/4	33
80	93	74.5	56.5	25	28	18.5	16	92	19	15.5	188	45.5	46.5	56	M12 x 1.75	24	M12 x 1.75	3/8	37
100	105	84	66	30	36	21	16	112	23	19	224	55.5	56.5	62	M14 x 2	28	M14 x 2	3/8	40

Bore size	Q	R	S	T	TA	TB	V	W	X	YY	YL	Z
12	14	48	22	56	2	5	40	5	50	M4 x 0.7	7	12
16	16	52	25	62	2.5	5.5	42	7	54	M5 x 0.8	8	13
20	18	60	30	72	2	4	52	10	64	M5 x 0.8	8	13
25	26	70	38	86	2	2	62	10	76	M6 x 1.0	9	14
32	30	96	48	112	2	1	80	5	100	M8 x 1.25	11	16
40	30	106	48	122	2	1	90	10	110	M8 x 1.25	11	17
50	40	120	56	138	2	1	100	10	124	M10 x 1.5	12.5	17
63	50	130	69	148	2	1	110	10	132	M10 x 1.5	15	19
80	60	160	88	185	2.5	1.5	140	15	166	M12 x 1.75	18	21
100	80	190	108	221	2.5	1.5	170	15	200	M14 X 2	21	25

MGQM (SLIDE BEARING)

Bore Size (mm)	A	DB	E
32	71.5	20	24
40	71.5	20	17.5
50	81	25	25
63	81	25	20
80	93	28	18.5
100	105	36	21

MGQL (BALL BUSH BEARING)

Bore size	A		DB	E	
	25,50st	75,100st		25,50st	75,100st
32	53	90	16	5.5	42.5
40	54	90	16	0	36
50	60	102	20	4	46
63	61	102	20	0	41
80	84	143	25	9.5	68.5
100	89	153	30	5	69

Other dimensions are the same as for slide bearing.



FOR FURTHER TECHNICAL
DETAILS ON THIS
PRODUCT REQUEST
CATALOGUE REFERENCE
E225