

INTRODUCTION

Two-stage filters are for susceptibility use when equipment impedance at radiation frequency is low.

COMPONENTS

PART NO.	C1(uF)	C2(uF)	L1(uH)	L2(mH)	Cy(pF)	R(KΩ)
03DSCG5	0.22	0.22	30	1.0	5500	330K
06DSCG5			70	1.7		
10DSCG5			40	1.2		
20DSGG5	0.55		30	0.93		

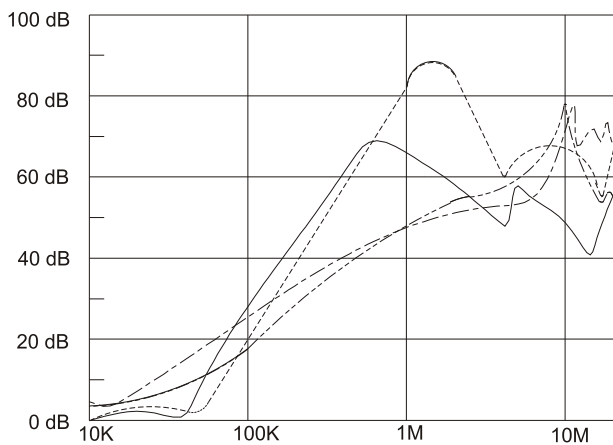
MINIMUM INSERTION LOSS IN dB

COMMONMODE (L-G) IN 50 OHM SYSTEM							
CURRENT RATING	FREQUENCY-MHz						
	.15	.50	1.0	5.0	10	30	
3A	12	25	30	45	60	35	
6A	25	30	30	35	50	45	
• 10A	15	20	25	40	45	40	
** 20A	12	20	30	35	40	40	
DIFFERENTIALMODE (L-L) IN 50 OHM SYSTEM							
3A	20	50	60	45	45	45	
6A	30	25	40	40	40	40	
• 10A	25	50	50	45	45	45	
** 20A	25	60	60	50	50	45	

• VDE approved in 8A
 ** VDE approved in 16A

INSERTION LOSS (TYPICAL)

03DSCG5 ----- COMMON MODE ----- DIFF. MODE
06DSCG5 ----- COMMON MODE ----- DIFF. MODE



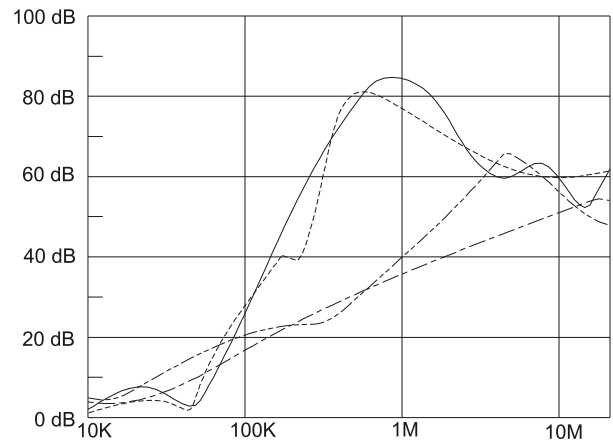
SPECIFICATIONS

- Maximum leakage current each line-to-ground: @ 115VAC 60Hz: 0.45mA
 @ 250VAC 50Hz: 0.90mA
- Hipot rating (one minute)
 line-to-ground: 2250VDC
 line-to-line: 1450VDC
- Operating frequency: 50/60Hz
- Rated voltage: 115/250VAC

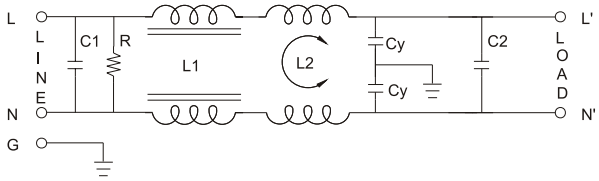
SERIES DIMENSIONS

PART NO.	DIMENSIONS IN INCHES/mm				
	A	B	C	D	E
03DSCG5	3.25 82.5	1.90 48.3	1.15 29.2	2.38 60.5	2.77 70.4
06DSCG5	3.75 95.2	2.06 52.3	1.54 39.1	2.94 74.7	3.34 84.8
10DSCG5					
20DSGG5	5.25 130.5	3.40 86.4		3.75 95.3	4.14 105.1

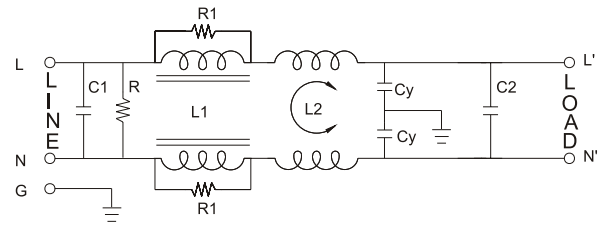
10DSCG5 ----- COMMON MODE ----- DIFF. MODE
20DSGG5 ----- COMMON MODE ----- DIFF. MODE



ELECTRICAL SCHEMATIC



3A. 6A. 10A.

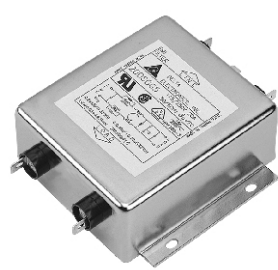
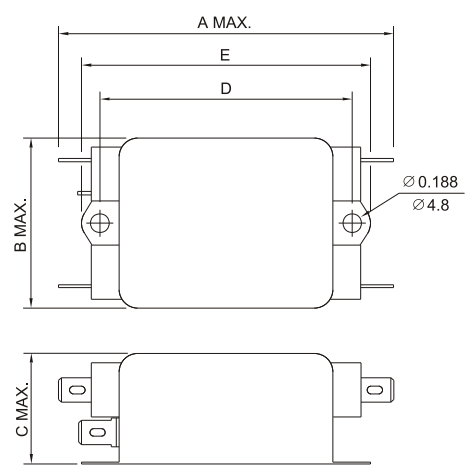


20A. R1=330 (Ohm)

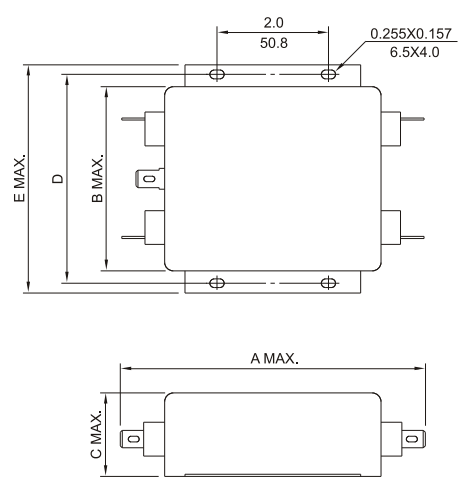
MECHANICAL CONSTRUCTION



CG5



GG5



UNIT: INCH
mm

Mouser Electronics

Authorized Distributor

Click to View Pricing, Inventory, Delivery & Lifecycle Information:

[Delta Electronics:](#)

[03DSCG5](#) [10DSCG5](#) [20DSGG5](#) [06DSCG5](#)