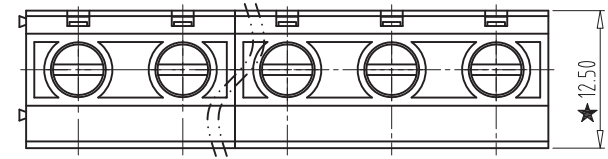
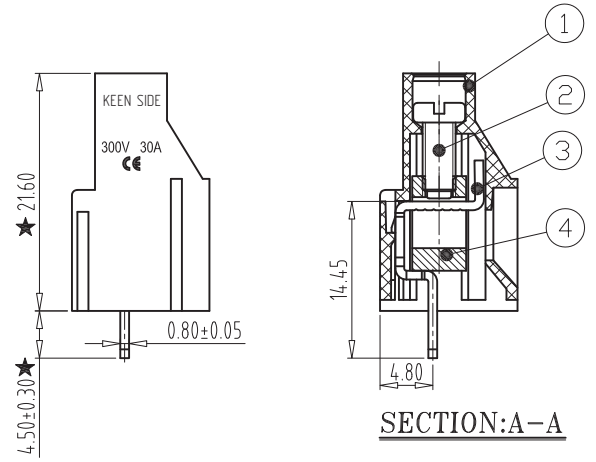


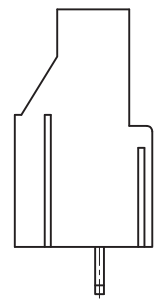
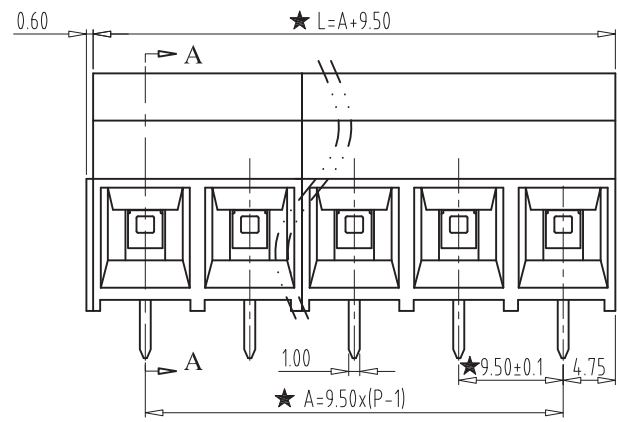
PCB LAYOUT
S=1.5:1



- NOTES:
1. Rating:300V 30A;
 2. Insulation Withstands Voltage: AC2000V/MIN
 3. Insulation Resistance:
≥500MΩ or more at DC500V
 4. Using Temperature Range: -40°C/+105°C
 5. Screw Torque Value:0.5N.m
 6. Suitable Electric Wire: 10-26AWG
 - 7, "★" the important dimension.



SECTION: A-A



Total Pitch Tolerances in mm										Nominal dimension range in mm										⊥	≡	—	//		
over	to	over	to	over	to	over	to	over	to	over	to	over	to	over	to	over	to	over	to	0	over	0	over	0	over
0	30	53	70	90	115	150	200	250	320	0	30	53	70	90	115	150	200	250	320	0	10	0	100	0	150
±0.18	±0.20	±0.25	±0.3	±0.35	±0.44	±0.55	±0.70	±0.75	±0.20	±0.25	±0.30	±0.35	±0.44	±0.55	±0.70	±0.80	±0.90	0.2	0.3	0.3	0.3	0.2	0.3	0.5	0.5

4			P	BRASS	Ni Plated
3			P	BRASS	Tin Plated
2			P	STEEL	M3/Zn Plated
1			/	PA66(V0)	2P/3P
ITEM	NAME OF PART	NO. OF PART	Q"TY	MATERIAL	NOTE
DWG.	ZX	DATE	2020.07.10	UNITS	mm
CHK.		DATE		SCALE	1.5 : 1
APP.		DATE			
			NAME	KSE-950-9.5-XX	
			DWGNO.		