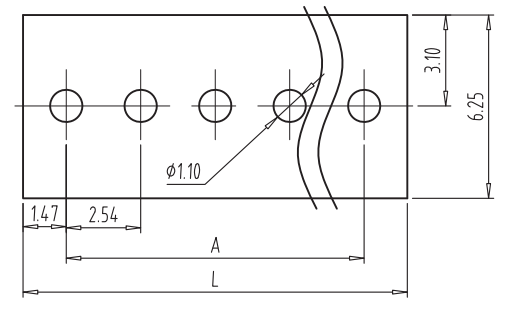


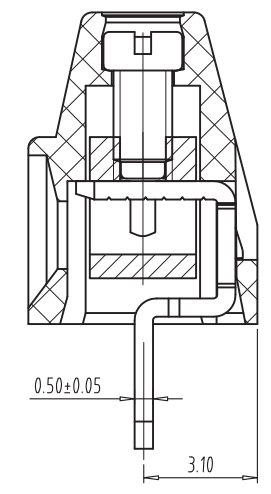
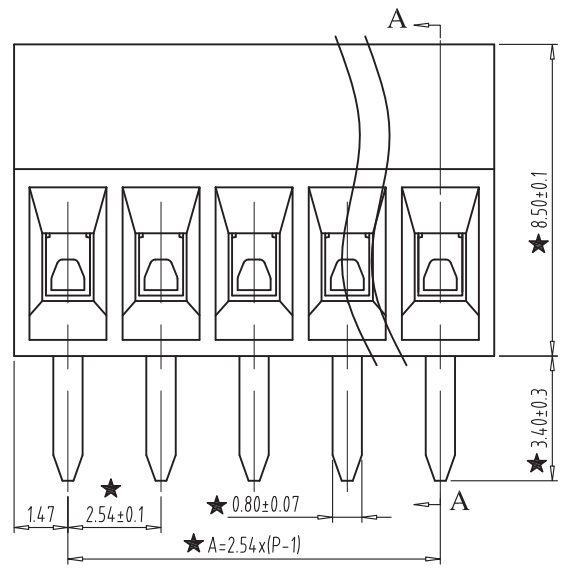
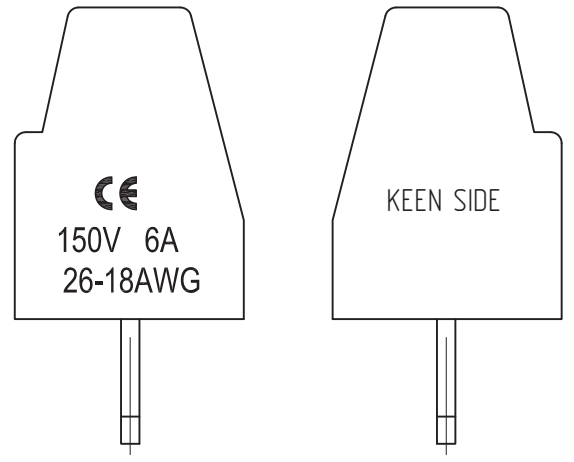
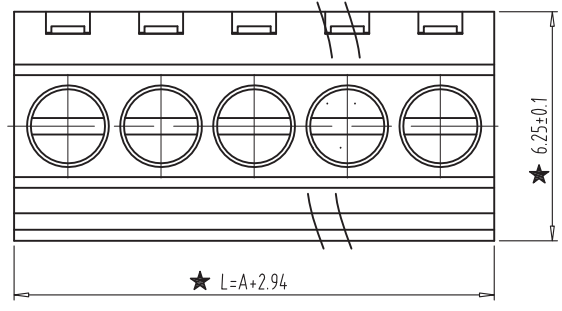
REV	CONTENT	CHK	DATE
-----	---------	-----	------

NOTES:

1. Rating:150V 6A;
2. Insulation Withstands Voltage:
AC1300V/MIN
3. Insulation Resistance:
500MΩ or more at DC500V
4. Using Temperature Range: -40° C--+105° C
5. Screw Torque Vlaue:0.1N.m
6. Suitable Electric Wire: 26-18AWG
- 7."★" is the important dimension.
- 8.Flame retardant rating: UL94 V-0;
- 9.Pass the ROSH test;



PCB LAYOUT
S=4:1



SECTION: A-A

Total Pitch Tolerances in mm										Nominal dimension range in mm										⊥	≡	-	//									
over 0	over 30	over 53	over 70	over 90	over 115	over 150	over 250	over 350	over 500	over 0	over 30	over 53	over 70	over 90	over 115	over 150	over 200	over 250	over 320	over 0	over 10	all	over 0	over 100	over 150	over 150	0.2	0.3	0.3	0.2	0.3	0.5
±0.18	±0.25	±0.30	±0.35	±0.40	±0.45	±0.60	±0.70	±0.75	±0.85	±0.20	±0.25	±0.30	±0.35	±0.44	±0.55	±0.70	±0.80	±0.90	±1.00	0.2	0.3	0.3	0.2	0.3	0.5							

ITEM	NAME OF PART	NO. OF PART	Q'TY	MATERIAL	NOTE
DWG.	SK	DATE	2015-03-03	SIZE	A4 UNITS mm SHEET/OF 1/1
CHK.		DATE		SCALE	5:1
APP.		DATE		NAME	KSE-308V-2.54-XX
KEEN SIDE ELECTRONICS				DWGNO.	