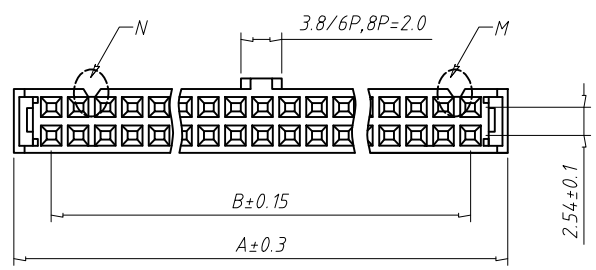
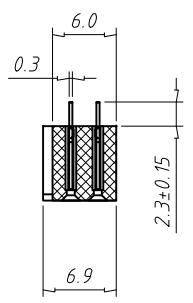
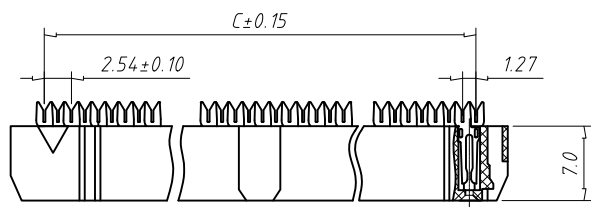
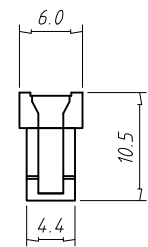
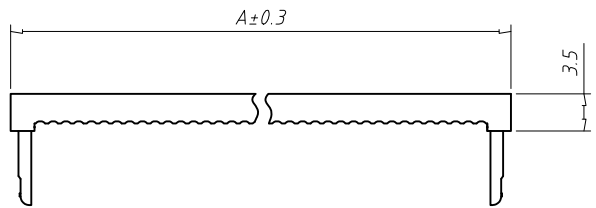
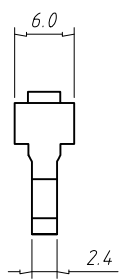
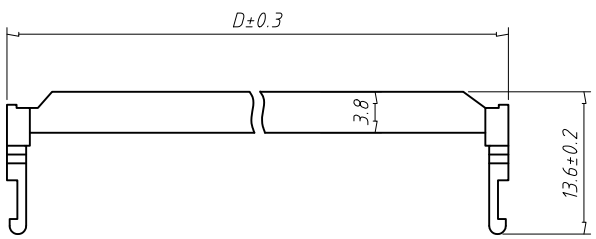


FILE:



Material:
 Housing: PBT,UL94V-0
 Contacts: Brass
 Plating: Au or Sn over 50u" nickel

Electrical Characteristics:
 Current Rating: 3.0 AMP
 Insulator Resistance: 1000M Ohm min.
 Withstand Voltage: 1000V AC / Minute
 Contact Resistance: 20m Ohm max.
 Operating Temperature: -40°C ~ +105°C
 Max.Processing Temp: 180°C for 30-60 seconds
 (200°C for 10 seconds)

Note:
 6P Without Slot M and N
 8P ~ 12P With Slot M, Without Slot N
 14P ~ 64P With Slot M and N

Pin	Dimension mm			
	A	B	C	D
06	12.42	5.08	6.35	12.12
08	14.96	7.62	8.89	14.66
10	17.50	10.16	11.43	17.20
12	20.04	12.70	13.97	19.74
14	22.58	15.24	16.51	22.28
16	25.12	17.78	19.05	24.82
18	27.66	20.32	21.59	27.36
20	30.20	22.86	24.13	29.30
24	35.28	27.94	29.21	34.98
26	37.82	30.48	31.75	37.52
28	40.36	33.02	34.29	40.06
30	42.90	35.56	36.83	42.60
34	47.98	40.64	41.91	47.68
40	55.60	48.26	49.53	55.30
44	60.68	53.34	54.61	60.38
50	68.30	60.96	62.23	68.00
60	81.00	73.66	74.93	80.70
64	86.08	78.74	80.01	85.78

Autodesk

Autodesk

ITEM	NAME OF PART	NO. OF PART	Q"TY	MATERIAL	NOTE
DWG.		DATE	SIZE	A4 UNITS mm	SHEET/OF 1 / 1
CHK.		DATE	SCALE		
APP.		DATE		NAME IDC-XX	
				DWGNO.	

Total Pitch Tolerances in mm										Nominal dimension range in mm										⊥	≡	—	//
over 0 to 30	over 30 to 53	over 53 to 70	over 70 to 90	over 90 to 115	over 115 to 150	over 150 to 250	over 250 to 350	over 350 to 500	over 500 to 1000	over 1000 to 2000	over 2000 to 3200	over 3200 to 10000	over 10000 to 15000	over 15000 to 20000	over 20000 to 25000	over 25000 to 30000	over 30000 to 40000	over 40000 to 50000	over 50000 to 100000	over 100000 to 150000			
±0.18	±0.20	±0.25	±0.3	±0.35	±0.44	±0.60	±0.70	±0.85	±0.20	±0.25	±0.30	±0.35	±0.44	±0.55	±0.70	±0.80	±0.90	0.2	0.3	0.3	0.2	0.3	0.5