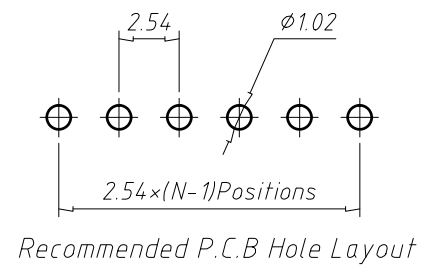
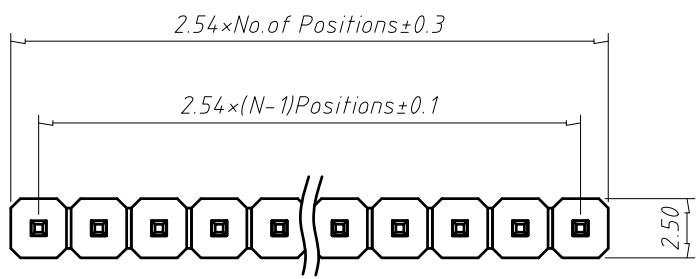


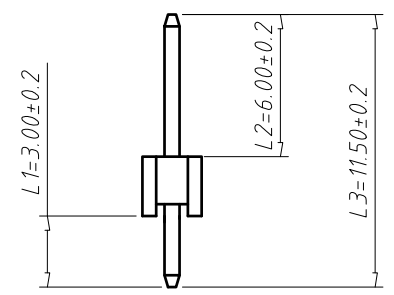
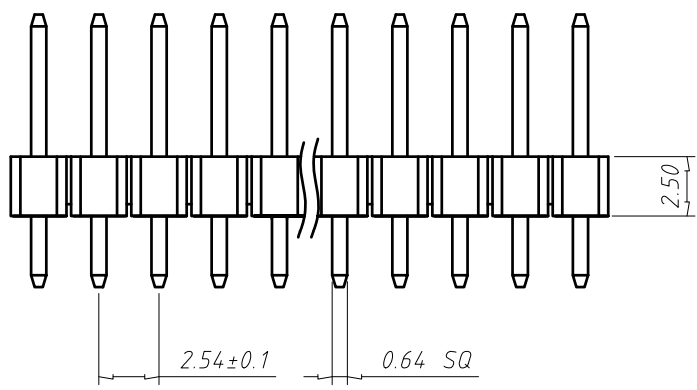
FILE: _____



Material:
 Standard: PA6T
 Contact: Brass
 Insulator: Polyester, UL 94 V-0

Electrical Characteristics:
 Rated Current: 3AMP
 Contact Resistance: 20mΩ Max
 Withstand Voltage: 1000V AC/DC
 Insulator Resistance: 1000MΩ Min

Mechanical
 Operating Temperature: -40°C ~ +105°C



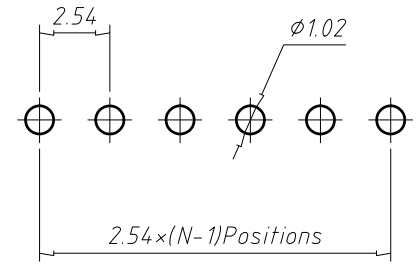
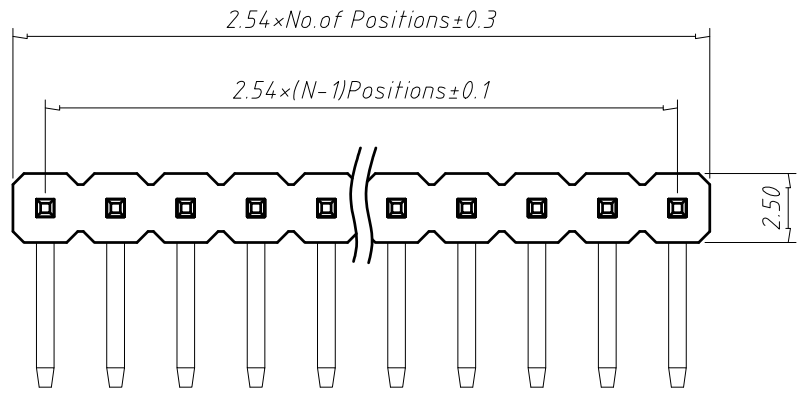
Dimension antitheses list (mm)

ITEM	L1	L2	L3	Plastic Height
Standard	3.00	6.00	11.50	2.50
Nonstandard	---	---	---	---

Total Pitch Tolerances in mm										Nominal dimension range in mm										⊥	≡	—	//								
over 0	over 30	over 53	over 70	over 90	over 115	over 150	over 250	over 350	over 500	over 0	over 30	over 53	over 70	over 90	over 115	over 150	over 200	over 250	over 320	over 0	over 10	all	over 0	over 100	over 150	0.2	0.3	0.3	0.2	0.3	0.5
±0.18	±0.20	±0.25	±0.3	±0.35	±0.44	±0.60	±0.70	±0.85	±0.20	±0.25	±0.30	±0.35	±0.44	±0.55	±0.70	±0.80	±0.90	0.2	0.3	0.3	0.2	0.3	0.2	0.3	0.5						

ITEM	NAME OF PART	NO. OF PART	Q'TY	MATERIAL	NOTE
DWG.		DATE	SIZE	A4 UNITS mm	SHEET/OF 1 / 1
CHK.		DATE	SCALE		
APP.		DATE		NAME PLS-XX	
				DWGNO.	

FILE:

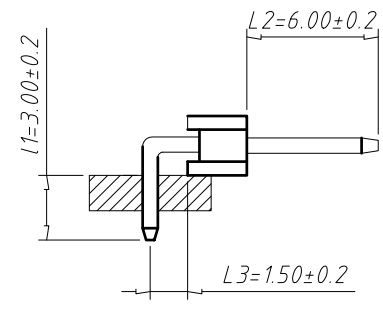
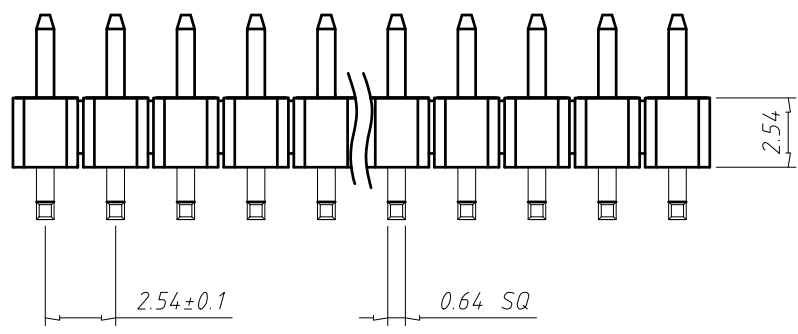


Recommended P.C.B Hole Layout

Material:
 Standard: PA6T
 Contact: Brass
 Insulator: Polyester, UL 94V-0

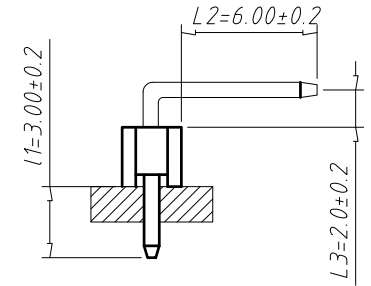
Electrical Characteristics:
 Rated Current: 3AMP
 Contact Resistance: 20mΩ Max
 Withstand Voltage: 1000V AC/DC
 Insulator Resistance: 1000MΩ Min

Mechanical
 Operating Temperature: -40°C ~ +105°C
 Max. Processing Temp: 240°C for 30-60 seconds
 (260°C for 10 seconds)



R2 Type

Dimension antitheses list (mm)				
ITEM	L1	L2	L3	Plastic Height
Standard R1	3.00	6.00	2.00	2.50
Standard R2	3.00	6.00	1.50	2.50
Nonstandard	---	---	---	---



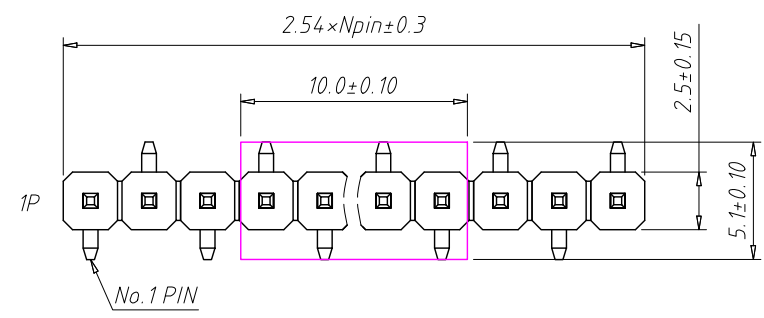
R1 Type

Total Pitch Tolerances in mm										Nominal dimension range in mm										⊥		≡		-		//	
over 0	over 30	over 53	over 70	over 90	over 115	over 150	over 250	over 350	over 500	over 0	over 30	over 53	over 70	over 90	over 115	over 150	over 200	over 250	over 320	over 0	over 10	all	over 0	over 100	over 100	over 150	
±0.18	±0.20	±0.25	±0.3	±0.35	±0.44	±0.60	±0.70	±0.85	±0.20	±0.25	±0.30	±0.35	±0.44	±0.55	±0.70	±0.80	±0.90	0.2	0.3	0.3	0.3	0.2	0.3	0.5			

ITEM	NAME OF PART	NO. OF PART	Q'TY	MATERIAL	NOTE
DWG.		DATE	SIZE	A4 UNITS mm	SHEET/OF 1 / 1
CHK.		DATE	SCALE		
APP.		DATE			
				NAME	PLS-XXR
				DWGNO.	

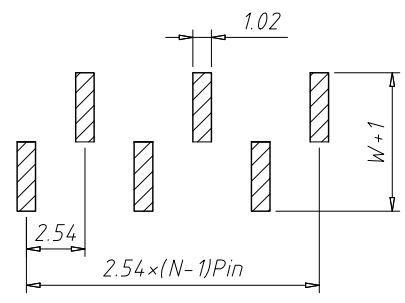


FILE:



T2 Type

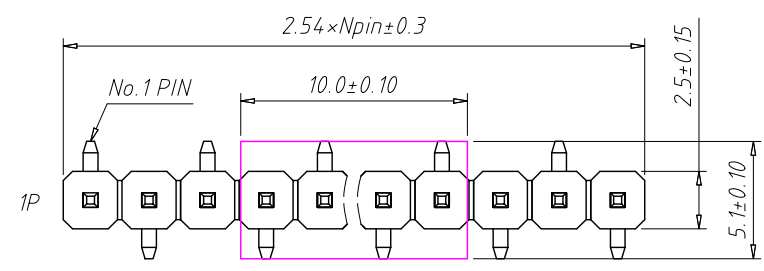
Recommended P.C.B Layout (Top Side)
(PCB BOARD TOLERANCE ± 0.05)



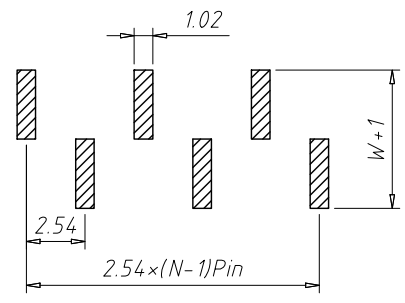
Material:
Standard: PA6T
Contact: Brass
Insulator: Polyester, UL94V-0

Electrical Characteristics:
Rated Current: 3AMP
Contact Resistance: 20mΩ Max
Withstand Voltage: 1000V AC/DC
Insulator Resistance: 1000MΩ Min

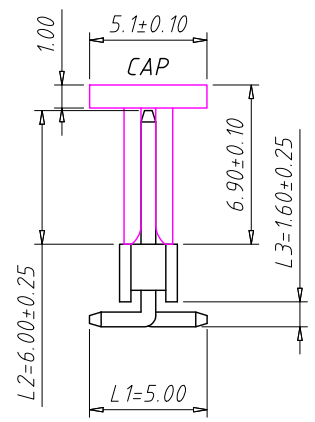
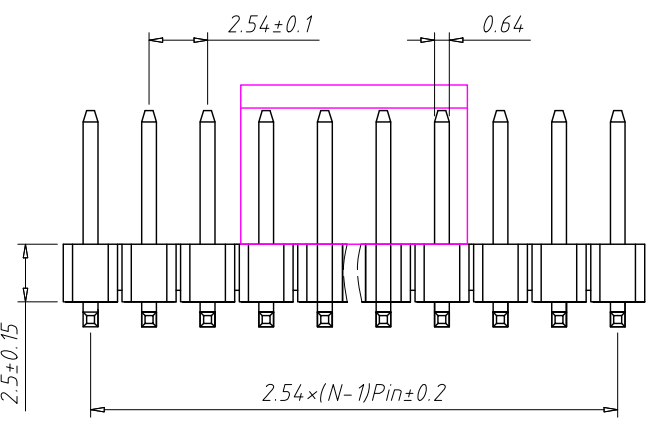
Mechanical
Operating Temperature: -40°C ~ +105°C
Max. Processing Temp: 230°C for 30-60 seconds
(260°C for 5 seconds)



T1 Type



N=W/O Post



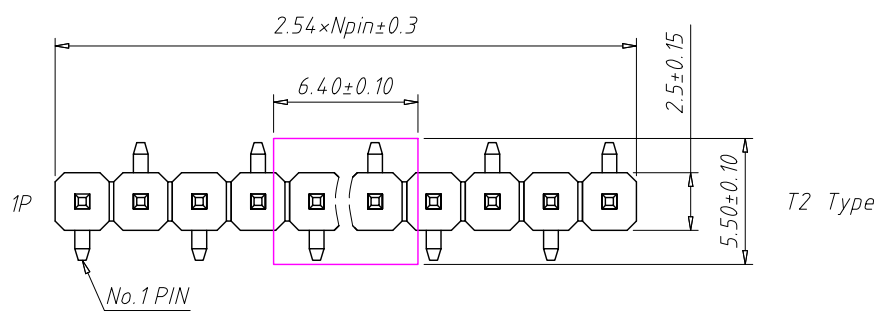
Dimension antitheses list (mm)				
ITEM	L1	L2	L3	Plastic Height
Standard	5.00	6.00	1.60	2.50
Nonstandard	---	---	---	---

Total Pitch Tolerances in mm										Nominal dimension range in mm																
over 0	over 30	over 53	over 70	over 90	over 115	over 150	over 250	over 350	over 500	over 0	over 30	over 53	over 70	over 90	over 115	over 150	over 200	over 250	over 320	over 0	over 10	≡	≡	over 0	over 100	over 150
±0.18	±0.20	±0.25	±0.3	±0.35	±0.4	±0.60	±0.70	±0.85	±0.20	±0.25	±0.30	±0.35	±0.4	±0.44	±0.55	±0.70	±0.80	±0.90	0.2	0.3	0.3	all	all	0.2	0.3	0.5

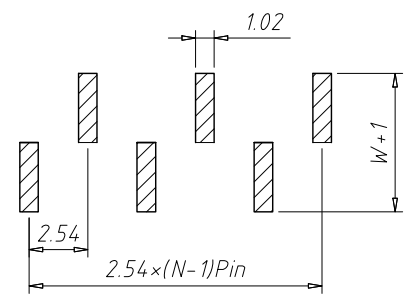
ITEM	NAME OF PART	NO. OF PART	Q'TY	MATERIAL			NOTE	
DWG.		DATE	SIZE	A4	UNITS	mm	SHEET/OF	1 / 1
CHK.		DATE	SCALE					
APP.		DATE		NAME PLS-XXS				
				DWGNO.				



FILE:



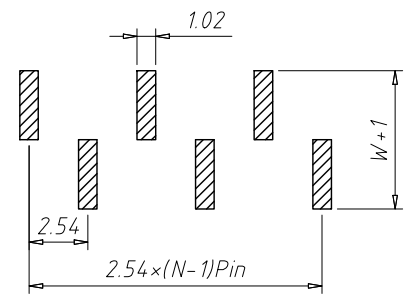
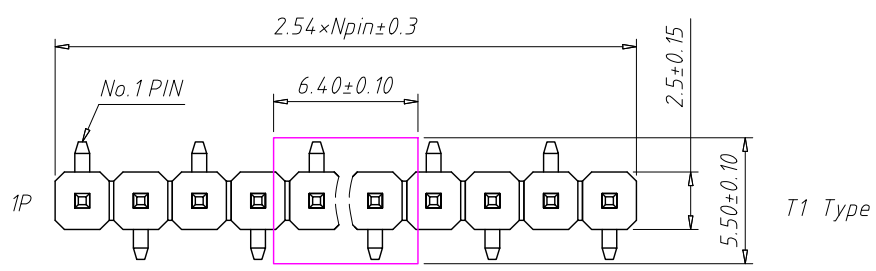
Recommended P.C.B Layout (Top Side)
(PCB BOARD TOLERANCE ± 0.05)



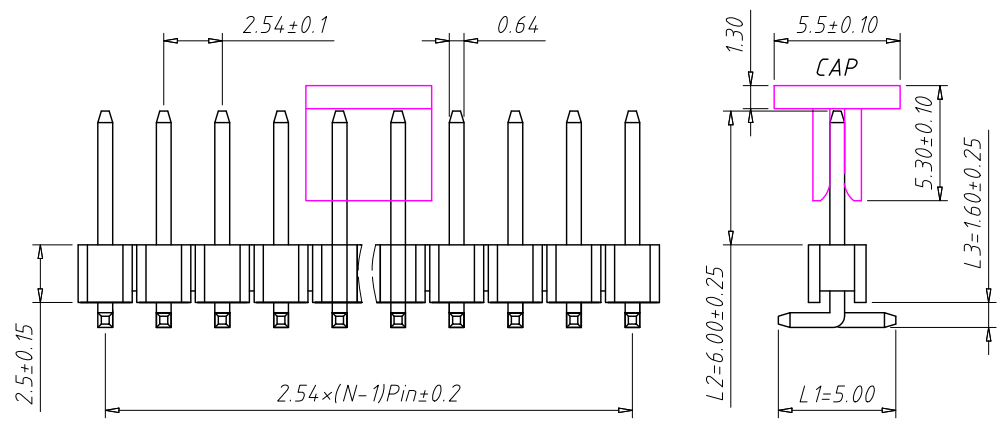
Material:
Standard: PA6T
Contact: Brass
Insulator: Polyester, UL 94 V-0

Electrical Characteristics:
Rated Current: 3AMP
Contact Resistance: 20mΩ Max
Withstand Voltage: 1000V AC/DC
Insulator Resistance: 1000MΩ Min

Mechanical
Operating Temperature: -40°C ~ +105°C
Max. Processing Temp: 230°C for 30-60 seconds
(260°C for 5 seconds)



N=W/O Post



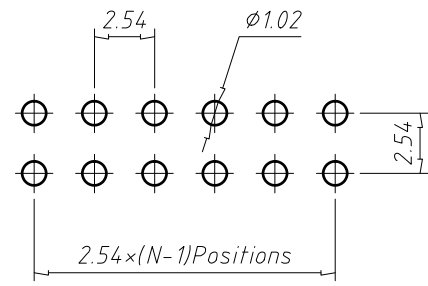
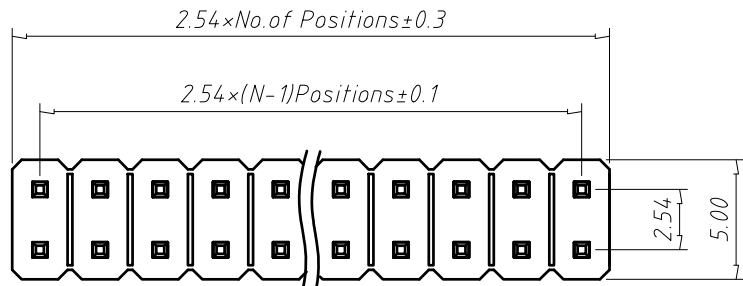
Dimension antitheses list (mm)				
ITEM	L1	L2	L3	Plastic Height
Standard	5.00	6.00	1.60	2.50
Nonstandard	---	---	---	---

Total Pitch Tolerances in mm										Nominal dimension range in mm										⊥		≡		-		//	
over 0	over 30	over 53	over 70	over 90	over 115	over 150	over 250	over 350	over 500	over 0	over 30	over 53	over 70	over 90	over 115	over 150	over 200	over 250	over 320	over 0	over 10	all	over 0	over 100	over 100	over 150	
±0.18	±0.20	±0.25	±0.3	±0.35	±0.4	±0.60	±0.70	±0.85	±0.20	±0.25	±0.30	±0.35	±0.4	±0.44	±0.55	±0.70	±0.80	±0.90	0.2	0.3	0.3	0.3	0.2	0.3	0.3	0.5	

ITEM	NAME OF PART	NO. OF PART	Q'TY	MATERIAL			NOTE	
DWG.		DATE	SIZE	A4	UNITS	mm	SHEET/OF	1 / 1
CHK.		DATE	SCALE					
APP.		DATE		NAME PLS-XXS				
				DWGNO.				



FILE: _____

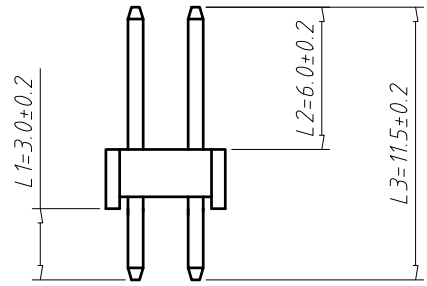
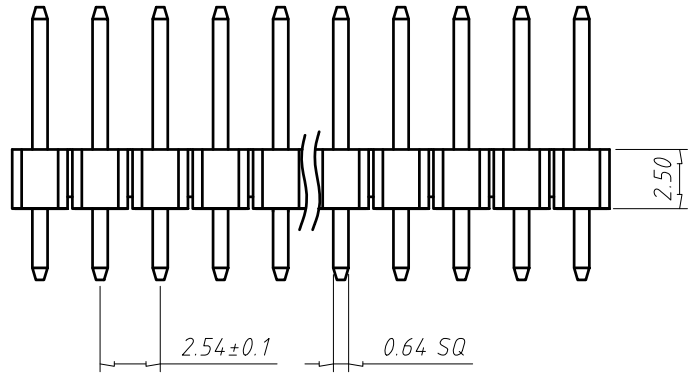


Recommended P.C.B Hole Layout

Material:
 Standard: PA6T
 Contact: Brass
 Insulator: Polyester, UL 94V-0

Electrical Characteristics:
 Rated Current: 3AMP
 Contact Resistance: 20mΩ Max
 Withstand Voltage: 1000V AC/DC
 Insulator Resistance: 1000MΩ Min

Mechanical
 Operating Temperature: -40°C ~ +105°C

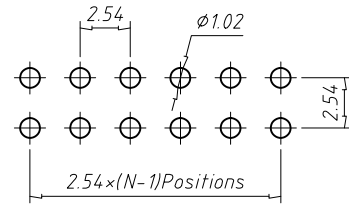
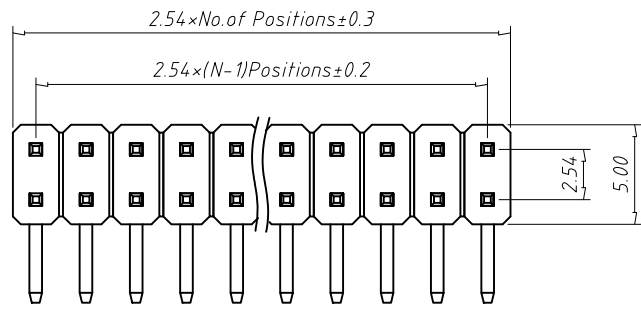


Dimension antitheses list (mm)				
ITEM	L1	L2	L3	Plastic Height
Standard	3.00	6.00	11.5	2.50
Nonstandard	---	---	---	---

Total Pitch Tolerances in mm										Nominal dimension range in mm										⊥	≡	—	//			
over 0	over 30	over 53	over 70	over 90	over 115	over 150	over 250	over 350	over 500	over 0	over 30	over 53	over 70	over 90	over 115	over 150	over 200	over 250	over 320	over 0	over 10	all	over 0	over 100	over 150	over 150
±0.18	±0.20	±0.25	±0.3	±0.35	±0.44	±0.60	±0.70	±0.85	±0.20	±0.25	±0.30	±0.35	±0.44	±0.55	±0.70	±0.80	±0.90	0.2	0.3	0.3	0.3	0.2	0.3	0.3	0.5	

ITEM	NAME OF PART	NO. OF PART	Q'TY	MATERIAL	NOTE
DWG.		DATE	SIZE	A4 UNITS mm	SHEET/OF 1 / 1
CHK.		DATE	SCALE		
APP.		DATE		NAME PLD-XX	
				DWGNO.	

FILE:

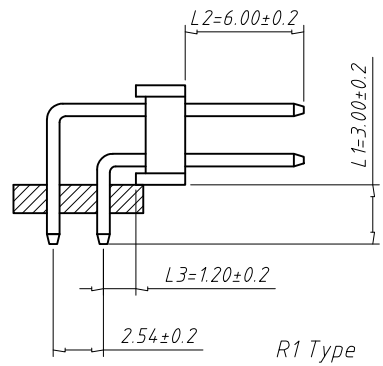
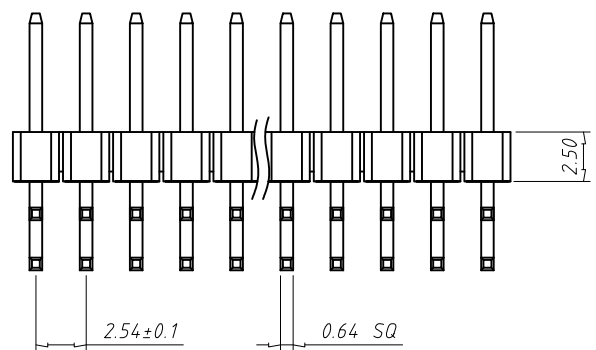


Recommended P.C.B Hole Layout

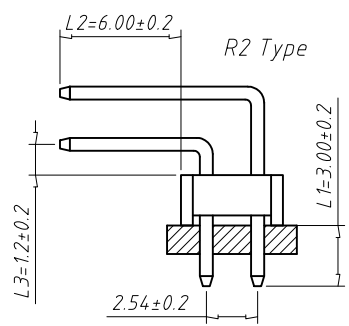
Material:
 Standard: PA6T
 Contact: Brass
 Insulator: Polyester, UL94V-0

Electrical Characteristics:
 Rated Current: 3AMP
 Contact Resistance: 20mΩ Max
 Withstand Voltage: 1000V AC/DC
 Insulator Resistance: 1000MΩ Min

Mechanical
 Operating Temperature: -40°C ~ +105°C



R1 Type



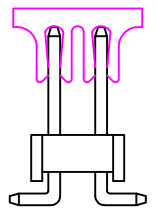
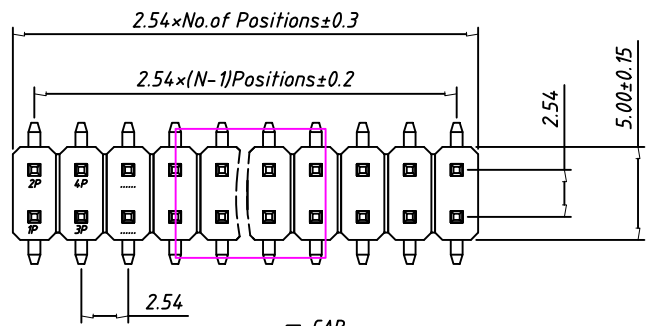
R2 Type

Dimension antitheses list (mm)				
ITEM	L1	L2	L3	Plastic Height
Standard	3.00	6.00	1.20	2.50
Nonstandard	---	---	---	---

Total Pitch Tolerances in mm										Nominal dimension range in mm										⊥	≡	—	//		
over 0	over 30	over 53	over 70	over 90	over 115	over 150	over 250	over 350	over 500	over 0	over 30	over 53	over 70	over 90	over 115	over 150	over 200	over 250	over 320	over 0	over 10	all	over 0	over 100	over 150
±0.18	±0.20	±0.25	±0.3	±0.35	±0.44	±0.60	±0.70	±0.85	±0.20	±0.25	±0.30	±0.35	±0.44	±0.55	±0.70	±0.80	±0.90	0.2	0.3	0.3	0.2	0.3	0.5		

ITEM	NAME OF PART	NO. OF PART	Q'TY	MATERIAL	NOTE
DWG.		DATE	SIZE	A4 UNITS mm	SHEET/OF 1 / 1
CHK.		DATE	SCALE		
APP.		DATE		NAME PLD-XXR	
				DWGNO.	

FILE:

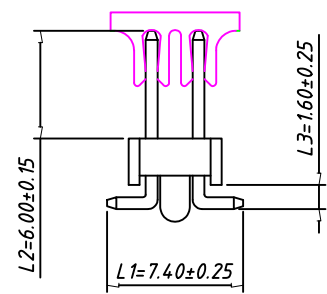
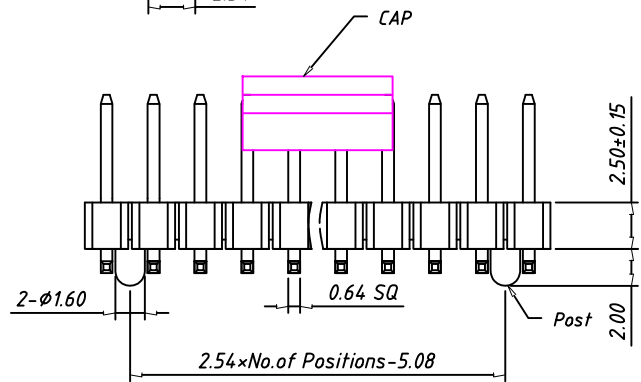


T=Without Post

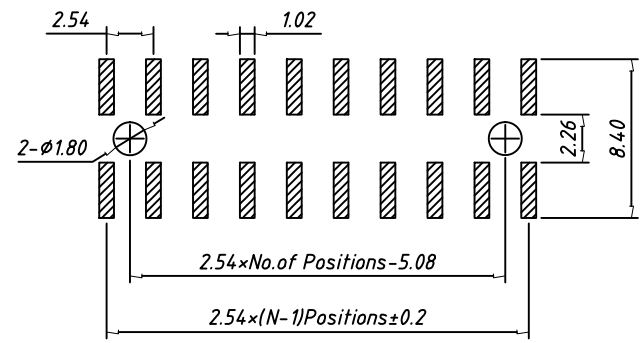
Material:
Standard: PA6T
Contact: Brass
Insulator: Polyester, UL 94 V-0

Electrical Characteristics:
Rated Current: 3AMP
Contact Resistance: 20mΩ Max
Withstand Voltage: 1000V AC/DC
Insulator Resistance: 1000MΩ Min

Mechanical
Operating Temperature: -40°C ~ +105°C
Max. Processing Temp: 230°C for 30-60 seconds
(260°C for 5 seconds)



T3=With Post



Recommended P.C.B Layout (Top Side)
(PCB BOARD TOLERANCE ± 0.05)

Dimension antitheses list (mm)				
ITEM	L1	L2	L3	Plastic Height
Standard	7.40	6.00	1.60	2.50
Nonstandard	---	---	---	---

Total Pitch Tolerances in mm										Nominal dimension range in mm										⊥	≡	—	//																									
over 0	over 30	over 53	over 70	over 90	over 115	over 150	over 250	over 350	over 500	over 0	over 30	over 53	over 70	over 90	over 115	over 150	over 200	over 250	over 320	over 0	over 10	all	over 0	over 100	over 150	0.18	0.25	0.35	0.45	0.60	0.70	0.85	0.20	0.25	0.30	0.35	0.40	0.45	0.55	0.70	0.80	0.90	0.2	0.3	0.3	0.2	0.3	0.5
±0.18	±0.25	±0.35	±0.45	±0.60	±0.70	±0.85	±0.20	±0.25	±0.30	±0.35	±0.40	±0.45	±0.55	±0.70	±0.80	±0.90	0.2	0.3	0.3	0.2	0.3	0.5																										

ITEM	NAME OF PART	NO. OF PART	Q'TY	MATERIAL	NOTE
DWG.		DATE	SIZE	A4 UNITS mm	SHEET/OF 1 / 1
CHK.		DATE	SCALE		
APP.		DATE		NAME PLD-XXS	
				DWGNO.	