

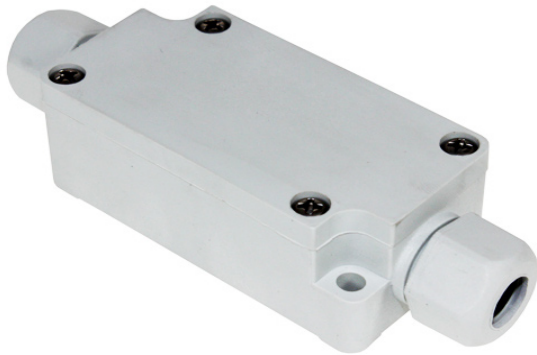
TMC Series Terminal Block Junction Box

- Integrated junction box consisting of cable glands and a terminal block
- IP65 rated
- Available in 3, 4 and 6 poles
- Supplied with 2 pcs each of 5 \varnothing and 7.4 \varnothing rubber cable bushes
- Available in light grey (black available upon request)
- Suitable for industrial applications , power cable joints, wiring for motors or sensors

SPECIFICATION

Rated voltage	250V
Rated current	15A
Applicable Wire	1.25mm ²
Standard tightening torque	0.5N
Operating temperature	-20°C to +75°C
Material:	
Cover, base & cable cap	PBT (UL94-V0)
Rubber bush	EPDM
Gasket	Polyurethane
Conductive plate	Brass
Terminal screw	Steel M3
Cover screw	Stainless steel M3

TAKACHI



MANUFACTURER PART NO.	LENGTH	WIDTH	HEIGHT	DESCRIPTION
TMC-3PG	24mm	65mm	33mm	3 Pole
TMC-4PG	24mm	60mm	40mm	4 Pole
TMC-6PG	24mm	70mm	50mm	6 Pole