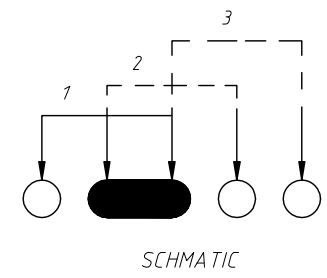
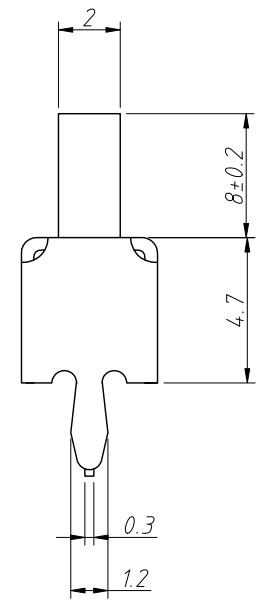
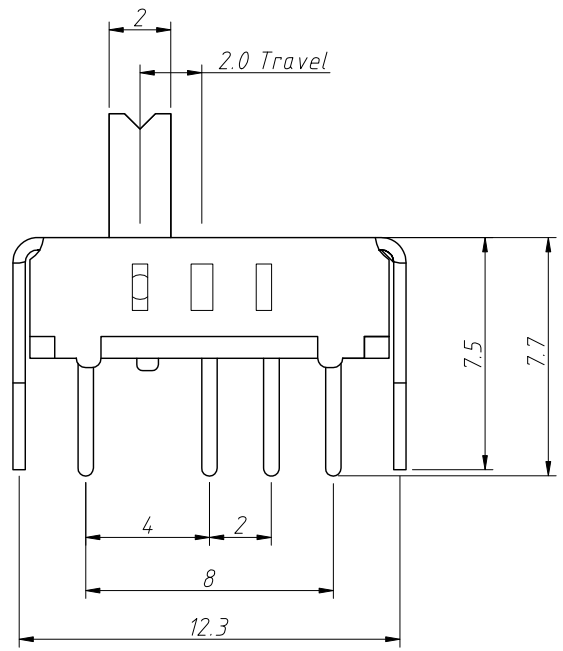


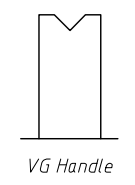
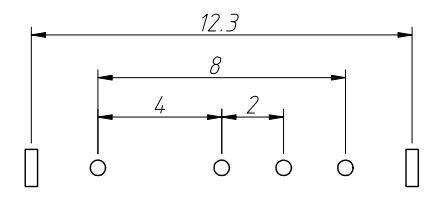
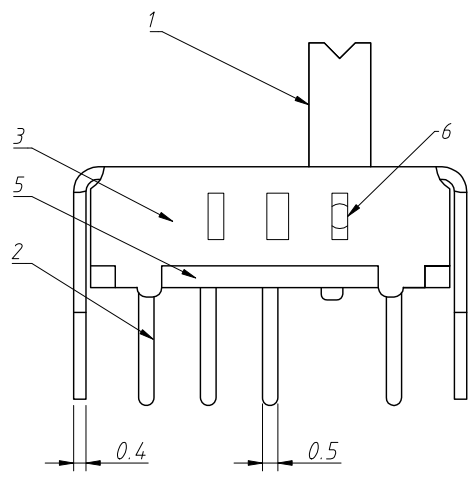
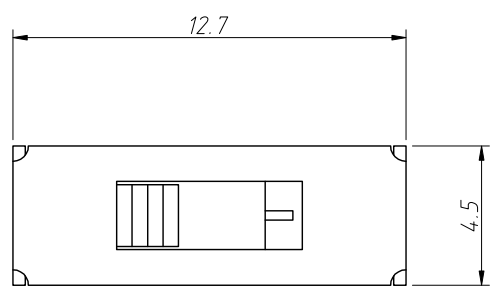
1  
RoHS Compliance

2		3		4		5		6		7		8	
REV	SYM	Revision Record		Appr.	Date								
V0	KLS07088	New Version Release		Song	2023-08-05								



- Notes:  
Material:  
1.Handle: POM Black  
2.Terminal Pin:Brass Strip,Silvering  
3.Shell:Steel Nickel Plated  
4.Code Chip:Phosphorus Copper Strip,Silvering  
5.Base: Insulating Board Primary Colours  
6.Shrapnel:Phosphorus Copper Strip,Nature

Electrical:  
Rating:DC 50V 0.3A  
Contact Resistance:100 mΩ Max  
Insulation Resistance:100 MΩ Min  
Withstand Voltage:AC 500V  
Force:250±100gf  
Durability:10000 Cycles.  
Hand Welding Temp:350±10°C



ANGLE TOLERANCE	PROJECTION	Description:		Slide Switch	
±3°					
GENERAL TOLERANCE	UNITS	mm	KLS P/N:	L-KLS7-SS48-13D07-G8	
x.x ±0.30	SHEET SIZE	A4			
x.xx ±0.20	Draw:	Song	2023-08-05	NingBo KLS ELECTRONIC CO.,L.TD.	
x.xxx ±0.10	Check:	Daniel	2023-08-05		